

# Product Datasheet

## Cyclin D1 Antibody (DCS-6)

### NBP2-15189-0.1mg

Unit Size: 0.1 mg

Store at 4C.

[www.novusbio.com](http://www.novusbio.com)



[technical@novusbio.com](mailto:technical@novusbio.com)

#### Publications: 2

Protocols, Publications, Related Products, Reviews, Research Tools and Images at:  
[www.novusbio.com/NBP2-15189](http://www.novusbio.com/NBP2-15189)

Updated 10/23/2024 v.20.1

Earn rewards for product  
reviews and publications.

Submit a publication at [www.novusbio.com/publications](http://www.novusbio.com/publications)

Submit a review at [www.novusbio.com/reviews/destination/NBP2-15189](http://www.novusbio.com/reviews/destination/NBP2-15189)



**NBP2-15189-0.1mg**

Cyclin D1 Antibody (DCS-6)

| Product Information     |                          |
|-------------------------|--------------------------|
| Unit Size               | 0.1 mg                   |
| Concentration           | 0.2 mg/ml                |
| Storage                 | Store at 4C.             |
| Clonality               | Monoclonal               |
| Clone                   | DCS-6                    |
| Preservative            | 0.05% Sodium Azide       |
| Isotype                 | IgG2a Kappa              |
| Purity                  | Protein A or G purified  |
| Buffer                  | 10 mM PBS with 0.05% BSA |
| Target Molecular Weight | 36 kDa                   |

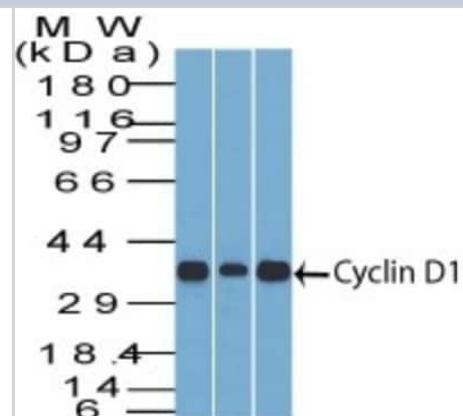
| Product Description     |   |
|-------------------------|---|
| Description             | 200ug/ml of antibody purified from Bioreactor Concentrate by Protein A or G. Prepared in 10 mM PBS with 0.05% BSA & 0.05% azide. Also available WITHOUT BSA & azide at 1.0 mg/ml. (NBP2-33138)<br><br>Antibody with azide - store at 2 to 8C. Antibody without azide - store at -20 to -80C.  |
| Host                    | Mouse   |
| Gene ID                 | 595   |
| Gene Symbol             | CCND1   |
| Species                 | Human, Mouse, Rat, Monkey   |
| Marker                  | G1-Cyclin & Mantle Cell Marker  |
| Specificity/Sensitivity | Recognizes a protein of 36kDa, identified as cyclin D1. Cyclin D1, one of the key cell cycle regulators, is a putative proto-oncogene overexpressed in a wide variety of human neoplasms. This antibody neutralizes the activity of cyclin D1 in vivo. About 60% of mantle cell lymphomas (MCL) contain a t(11; 14)(q13; q32) translocation resulting in over-expression of cyclin D1. This antibody is useful in identifying mantle cell lymphomas (cyclin D1 positive) from CLL/SLL and follicular lymphomas (cyclin D1 negative). About 40% of breast carcinomas are positive for Cyclin D1. Occasionally, hairy cell leukemia and plasma cell myeloma weakly express Cyclin D1. |
| Immunogen               | Human full length recombinant cyclin D1 protein (Uniprot: P24385)   |

| Product Application Details |   |
|-----------------------------|---|
| Applications                | Western Blot, Flow Cytometry, Immunocytochemistry/ Immunofluorescence, Immunohistochemistry, Immunohistochemistry-Paraffin  |
| Recommended Dilutions       | Western Blot 1-2 ug/ml, Flow Cytometry 1-2 ug/million cells, Immunohistochemistry, Immunocytochemistry/ Immunofluorescence 1-2 ug/ml, Immunohistochemistry-Paraffin 1-2 ug/ml   |
| Application Notes           | Use in Immunohistochemistry reported in scientific literature (PMID: 30050877) Immunohistochemistry (Formalin-fixed): 1-2ug/ml for 30 minutes at RT. Staining of formalin-fixed tissues requires heating tissue sections in 10mM Tris with 1mM EDTA, pH 9.0, for 45 min at 95C followed by cooling at RT for 20 minutes |

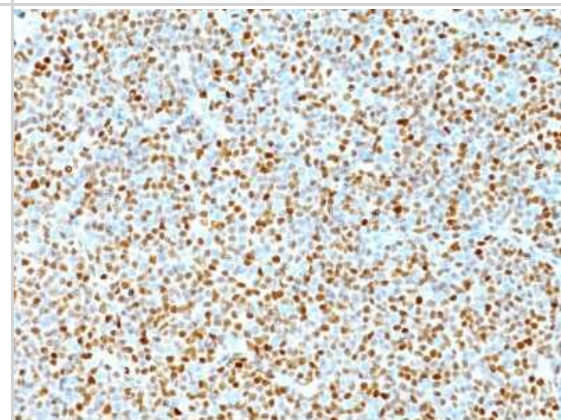


## Images

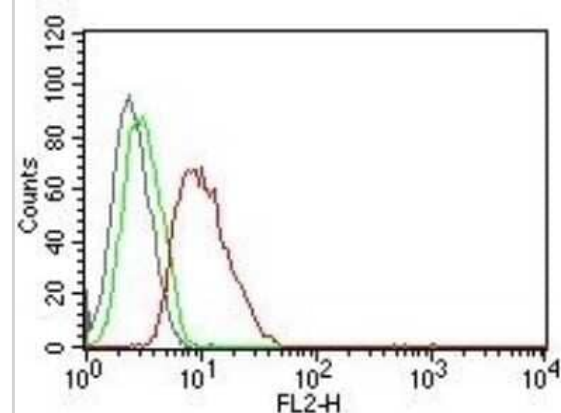
Western Blot: Cyclin D1 Antibody (DCS-6) [NBP2-15189] - analysis of Cyclin D1 in 1) C2C12, 2) HepG2, and 3) NIH3T3 lysate probed with Cyclin D1 antibody at 5 ug/ml. goat anti-mouse Ig HRP secondary antibody and PicoTest ECL substrate solution were used for this test.



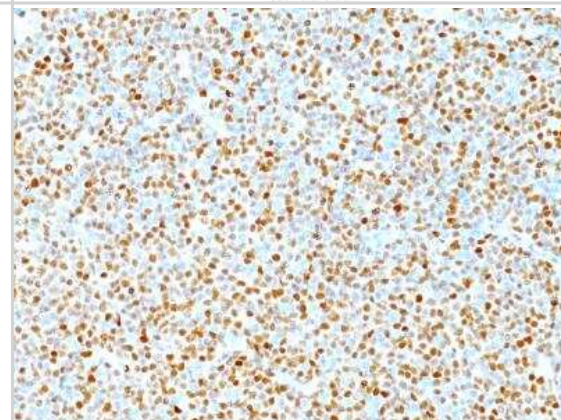
Immunohistochemistry-Paraffin: Cyclin D1 Antibody (DCS-6) [NBP2-15189] - Formalin-fixed, paraffin-embedded human Mantle Cell Lymphoma stained with Cyclin D1 Antibody (DCS-6).



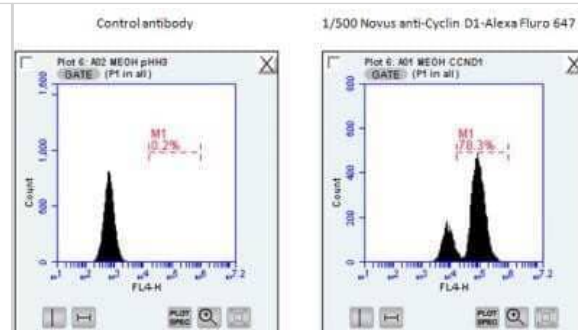
Flow Cytometry: Cyclin D1 Antibody (DCS-6) [NBP2-15189] - Flow Cytometric analysis of human Cyclin D1 on MCF-7 cells. Black: cells alone; Green: Isotype Control; Red: PE-labeled Cyclin D1 Monoclonal Antibody (DCS-6).



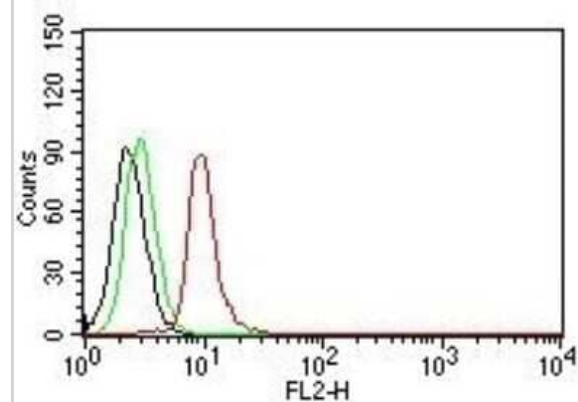
Immunohistochemistry-Paraffin: Cyclin D1 Antibody (DCS-6) [NBP2-15189] - Formalin-paraffin human mantle cell lymphoma stained with Cyclin D1 Ab (Clone DCS-6). Note nuclear staining of tumor cells.



Flow Cytometry: Cyclin D1 Antibody (DCS-6) [NBP2-15189] - Analysis using Alexa Fluor (R) 647 conjugate of NBP2-15189. Cyclin D1 staining of HCT116 cells using Alexa Fluor 647 conjugated Cyclin D1 antibody. Image from verified customer review.



Flow Cytometry: Cyclin D1 Antibody (DCS-6) [NBP2-15189] - Flow Cytometry of human Cyclin D1 on Jurkat cells. Black: cells alone; Green: Isotype Control; Red: PE-labeled Cyclin D1 Antibody (DCS-6).



## Publications

Darp R, Vittoria MA, Ganem NJ Et al. Oncogenic BRAF induces whole-genome doubling through suppression of cytokinesis Nat Commun 2022-07-15 [PMID: 35840569] (FLOW, Human)

### Details:

Citation using the Alexa Fluor 647 version of this antibody.

Russo I, Carrizzo A, Bochicchio S et al. siRNA Delivery for Control of Cyclin D1 and E2F1 Expression in Crohn's Disease. Transl Med UniSa 2017-07-01 [PMID: 30050877] (IF/IHC, Human)



### **Novus Biologicals USA**

10730 E. Briarwood Avenue  
Centennial, CO 80112  
USA  
Phone: 303.730.1950  
Toll Free: 1.888.506.6887  
Fax: 303.730.1966  
nb-customerservice@bio-techne.com

### **Bio-Techne Canada**

21 Canmotor Ave  
Toronto, ON M8Z 4E6  
Canada  
Phone: 905.827.6400  
Toll Free: 855.668.8722  
Fax: 905.827.6402  
canada.inquires@bio-techne.com

### **Bio-Techne Ltd**

19 Barton Lane  
Abingdon Science Park  
Abingdon, OX14 3NB, United Kingdom  
Phone: (44) (0) 1235 529449  
Free Phone: 0800 37 34 15  
Fax: (44) (0) 1235 533420  
info.EMEA@bio-techne.com

### **General Contact Information**

[www.novusbio.com](http://www.novusbio.com)  
Technical Support: nb-technical@bio-techne.com  
Orders: nb-customerservice@bio-techne.com  
General: novus@novusbio.com

### **Products Related to NBP2-15189-0.1mg**

---

|                    |   |
|--------------------|---|
| HAF007             | Goat anti-Mouse IgG Secondary Antibody [HRP]            |
| NB720-B            | Rabbit anti-Mouse IgG (H+L) Secondary Antibody [Biotin] |
| NBP1-96981-0.5mg   | Mouse IgG2a Kappa Isotype Control (M2AK)                |
| H00000595-P01-10ug | Recombinant Human Cyclin D1 GST (N-Term) Protein        |

---

### **Limitations**

This product is for research use only and is not approved for use in humans or in clinical diagnosis. Primary Antibodies are guaranteed for 1 year from date of receipt.

For more information on our 100% guarantee, please visit [www.novusbio.com/guarantee](http://www.novusbio.com/guarantee)

Earn gift cards/discounts by submitting a review: [www.novusbio.com/reviews/submit/NBP2-15189](http://www.novusbio.com/reviews/submit/NBP2-15189)

Earn gift cards/discounts by submitting a publication using this product:  
[www.novusbio.com/publications](http://www.novusbio.com/publications)

