

Product Datasheet

SATB1 Antibody NBP2-15107

Unit Size: 0.1 ml

Aliquot and store at -20C or -80C. Avoid freeze-thaw cycles.

www.novusbio.com



technical@novusbio.com

Protocols, Publications, Related Products, Reviews, Research Tools and Images at:
www.novusbio.com/NBP2-15107

Updated 9/9/2025 v.20.1

Earn rewards for product
reviews and publications.

Submit a publication at www.novusbio.com/publications

Submit a review at www.novusbio.com/reviews/destination/NBP2-15107



NBP2-15107**SATB1 Antibody****Product Information**

Unit Size	0.1 ml
Concentration	Concentrations vary lot to lot. See vial label for concentration. If unlisted please contact technical services.
Storage	Aliquot and store at -20C or -80C. Avoid freeze-thaw cycles.
Clonality	Polyclonal
Preservative	0.025% Proclin 300
Isotype	IgG
Purity	Antigen Affinity-purified
Buffer	PBS (pH 7), 20% Glycerol, 1% BSA
Target Molecular Weight	86 kDa

Product Description

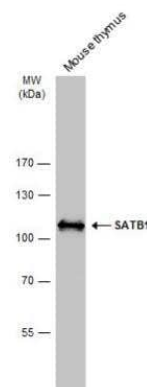
Description	Novus Biologicals Rabbit SATB1 Antibody (NBP2-15107) is a polyclonal antibody validated for use in IHC, WB, IP and ChIP. All Novus Biologicals antibodies are covered by our 100% guarantee.
Host	Rabbit
Gene ID	6304
Gene Symbol	SATB1
Species	Human, Mouse
Immunogen	Recombinant protein encompassing a sequence within the C-terminus region of human SATB1. The exact sequence is proprietary.

Product Application Details

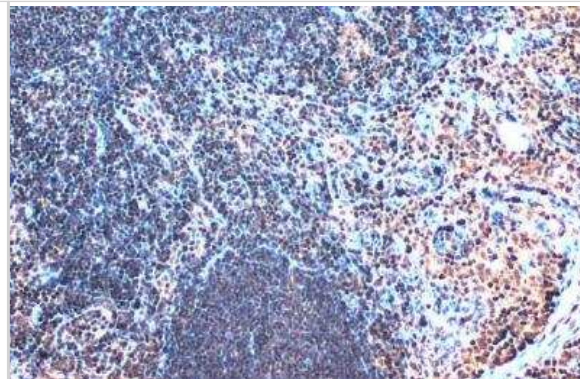
Applications	Western Blot, Immunohistochemistry-Paraffin, Immunohistochemistry, Immunoprecipitation, Chromatin Immunoprecipitation (ChIP)
Recommended Dilutions	Western Blot 1:500-1:10000, Immunohistochemistry 1:100-1:1000, Immunoprecipitation 1:100-1:500, Immunohistochemistry-Paraffin 1:100-1:1000, Chromatin Immunoprecipitation (ChIP)
Application Notes	ChIP assay-Assay dependent

Images

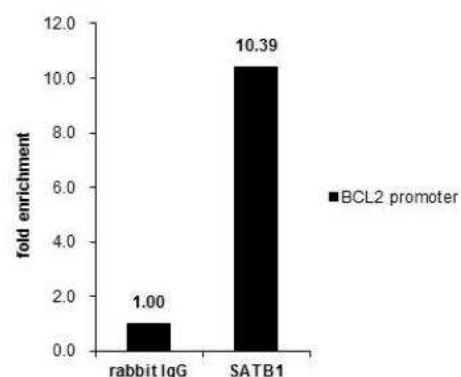
Western Blot: SATB1 Antibody [NBP2-15107] - Mouse tissue extract (50 ug) was separated by 7.5% SDS-PAGE, and the membrane was blotted with SATB1 antibody [C2C3], C-term diluted at 1:5000. The HRP-conjugated anti-rabbit IgG antibody (NBP2-19301) was used to detect the primary antibody.



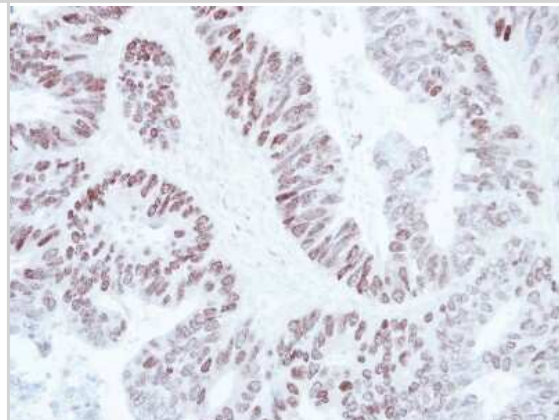
Immunohistochemistry-Paraffin: SATB1 Antibody [NBP2-15107] - Mouse lymph node. SATB1 stained by SATB1 antibody [C2C3], C-term diluted at 1:500. Antigen Retrieval: Citrate



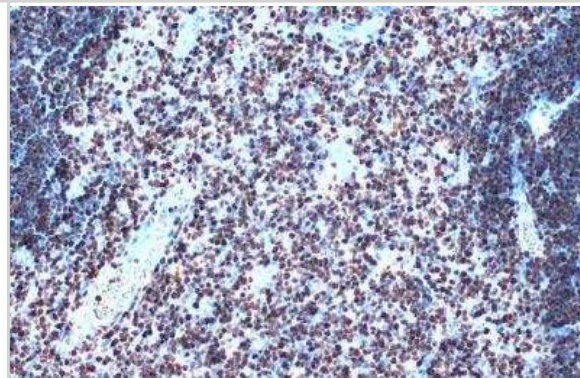
Chromatin Immunoprecipitation: SATB1 Antibody [NBP2-15107] - Cross-linked ChIP was performed with Jurkat chromatin extract and 5 ug of either control rabbit IgG or anti-SATB1 antibody. The precipitated DNA was detected by PCR with primer set targeting to BCL2 promoter. ChIP experiment and primer designs are based on Nucleic Acids Res. 2011 Jun;39(11):4640-52.



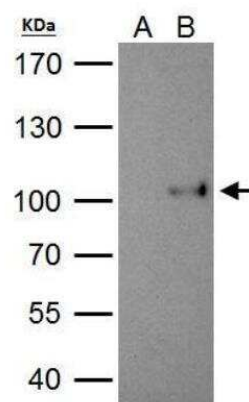
Immunohistochemistry-Paraffin: SATB1 Antibody [NBP2-15107] - Paraffin-embedded Colon ca, using antibody at 1:250 dilution.



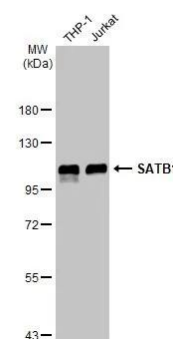
Immunohistochemistry-Paraffin: SATB1 Antibody [NBP2-15107] - Mouse thymus gland. SATB1 stained by SATB1 antibody [C2C3], C-term diluted at 1:500. Antigen Retrieval: Citra



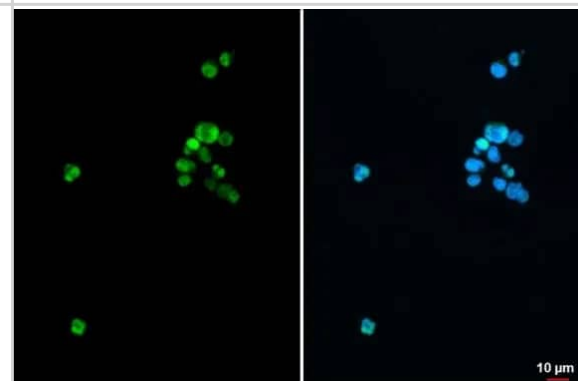
Immunoprecipitation: SATB1 Antibody [NBP2-15107] - 293T whole cell lysate/extract A. Control with 2 ug of preimmune rabbit IgG B. Immunoprecipitation of SATB1 protein by 2 ug of SATB1 antibody 7.5% SDS-PAGE The immunoprecipitated SATB1 protein was detected by SATB1 antibody diluted at 1:1000. EasyBlot anti-rabbit IgG was used as a secondary reagent.



Western Blot: SATB1 Antibody [NBP2-15107] - Various whole cell extracts (30 ug) were separated by 7.5% SDS-PAGE, and the membrane was blotted with SATB1 antibody [C2C3], C-term (NBP2-15107) diluted at 1:40000. The HRP-conjugated anti-rabbit IgG antibody was used to detect the primary antibody.



Immunocytochemistry/ Immunofluorescence: SATB1 Antibody [NBP2-15107] - SATB1 antibody [C2C3], C-term detects SATB1 protein at nucleus by immunofluorescent analysis. Sample: Jurkat cells were fixed in 4% paraformaldehyde at RT for 15 min. Green: SATB1 stained by SATB1 antibody [C2C3], C-term (NBP2-15107) diluted at 1:500. Blue: Fluoroshield with DAPI .





Novus Biologicals USA

10730 E. Briarwood Avenue
Centennial, CO 80112
USA
Phone: 303.730.1950
Toll Free: 1.888.506.6887
Fax: 303.730.1966
nb-customerservice@bio-techne.com

Bio-Techne Canada

21 Canmotor Ave
Toronto, ON M8Z 4E6
Canada
Phone: 905.827.6400
Toll Free: 855.668.8722
Fax: 905.827.6402
canada.inquires@bio-techne.com

Bio-Techne Ltd

19 Barton Lane
Abingdon Science Park
Abingdon, OX14 3NB, United Kingdom
Phone: (44) (0) 1235 529449
Free Phone: 0800 37 34 15
Fax: (44) (0) 1235 533420
info.EMEA@bio-techne.com

General Contact Information

www.novusbio.com
Technical Support: nb-technical@bio-techne.com
Orders: nb-customerservice@bio-techne.com
General: novus@novusbio.com

Products Related to NBP2-15107

HAF008	Goat anti-Rabbit IgG Secondary Antibody [HRP]
NB7160	Goat anti-Rabbit IgG (H+L) Secondary Antibody [HRP]
NBP2-24891	Rabbit IgG Isotype Control
NBP3-17001PEP	SATB1 Recombinant Protein Antigen

Limitations

This product is for research use only and is not approved for use in humans or in clinical diagnosis. Primary Antibodies are guaranteed for 1 year from date of receipt.

For more information on our 100% guarantee, please visit www.novusbio.com/guarantee

Earn gift cards/discounts by submitting a review: www.novusbio.com/reviews/submit/NBP2-15107

Earn gift cards/discounts by submitting a publication using this product:
www.novusbio.com/publications

