

# Product Datasheet

## OCT4 Antibody NBP2-15053

Unit Size: 0.1 ml

Aliquot and store at -20C or -80C. Avoid freeze-thaw cycles.

[www.novusbio.com](http://www.novusbio.com)



[technical@novusbio.com](mailto:technical@novusbio.com)

Protocols, Publications, Related Products, Reviews, Research Tools and Images at:  
[www.novusbio.com/NBP2-15053](http://www.novusbio.com/NBP2-15053)

Updated 10/23/2024 v.20.1

Earn rewards for product  
reviews and publications.

Submit a publication at [www.novusbio.com/publications](http://www.novusbio.com/publications)

Submit a review at [www.novusbio.com/reviews/destination/NBP2-15053](http://www.novusbio.com/reviews/destination/NBP2-15053)



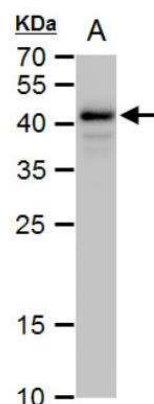
**NBP2-15053**

## OCT4 Antibody

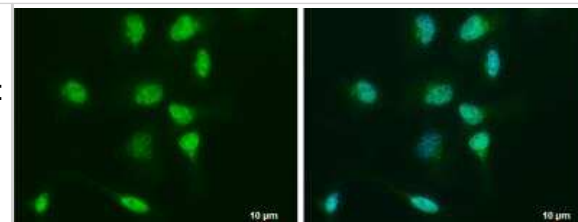
Product Information	
Unit Size	0.1 ml
Concentration	Concentrations vary lot to lot. See vial label for concentration. If unlisted please contact technical services.
Storage	Aliquot and store at -20C or -80C. Avoid freeze-thaw cycles.
Clonality	Polyclonal
Preservative	0.025% Proclin 300
Isotype	IgG
Purity	Antigen Affinity-purified
Buffer	PBS (pH 7), 20% Glycerol, 1% BSA
Target Molecular Weight	39 kDa
Product Description	
Host	Rabbit
Gene ID	5460
Gene Symbol	POU5F1
Species	Human, Mouse, Rat
Reactivity Notes	Cat (94%).
Marker	Embryonic Stem Cell Marker
Immunogen	Recombinant protein encompassing a sequence within the center region of human OCT4. The exact sequence is proprietary.
Product Application Details	
Applications	Western Blot, Flow Cytometry, Immunocytochemistry/ Immunofluorescence, Immunohistochemistry, Immunohistochemistry-Frozen, Immunohistochemistry-Paraffin, Immunoprecipitation
Recommended Dilutions	Western Blot 1:5000-1:100000, Flow Cytometry 1:50-1:200, Immunohistochemistry 1:100-1:1000, Immunocytochemistry/ Immunofluorescence 1:100-1:1000, Immunoprecipitation 1:500-1:1000, Immunohistochemistry-Paraffin 1:100-1:1000, Immunohistochemistry-Frozen
Application Notes	IHC-FR-Assay dependent

**Images**

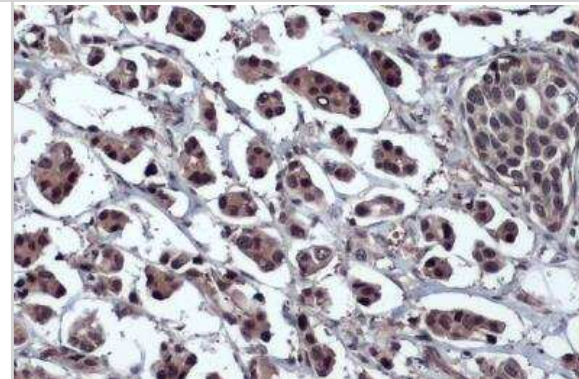
Western Blot: OCT4 Antibody [NBP2-15053] - A. 30 ug human ESC whole cell extract 12% SDS-PAGE Oct4 antibody dilution: 1:10000 The HRP-conjugated anti-rabbit IgG antibody (NBP2-19301) was used to detect the primary antibody.



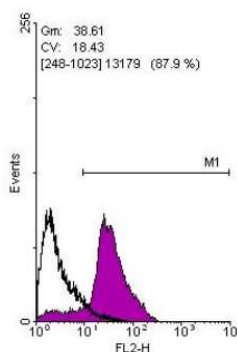
Immunocytochemistry/Immunofluorescence: OCT4 Antibody [NBP2-15053] - NT2D1 cells were fixed in 4% paraformaldehyde at RT for 15 min. Green: Oct4 protein stained by Oct4 antibody diluted at 1:500. Blue: Hoechst 33342 staining. Scale bar = 10  $\mu$ m.



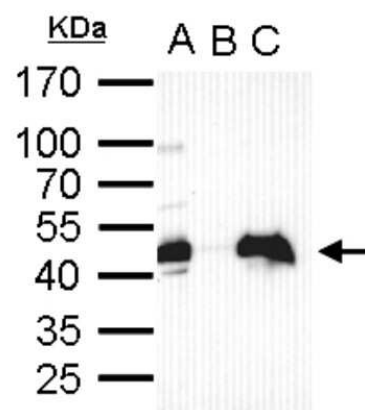
Immunohistochemistry-Paraffin: OCT4 Antibody [NBP2-15053] - Oct4 antibody detects Oct4 protein at nucleus by immunohistochemical analysis. Sample: Paraffin-embedded human breast carcinoma. Oct4 stained by Oct4 antibody diluted at 1:1000. Antigen Retrieval: Citrate buffer, pH 6.0, 15 min.



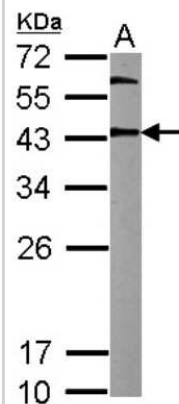
Flow Cytometry: OCT4 Antibody [NBP2-15053] - Human embryonic stem cells, staining with OCT3/4 or rabbit IgG (black).



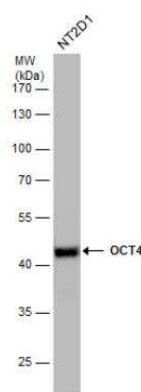
Western Blot: OCT4 Antibody [NBP2-15053] - Sample: cell lysate/extract of OCT4 gene transfected 293T cells A. Cell lysate/extract of transfected 293T cell, B. Control with 2  $\mu$ g of preimmune rabbit IgG, C. Immunoprecipitation of OCT4 by 2  $\mu$ g of OCT4 antibody 12% SDS-PAGE gel.



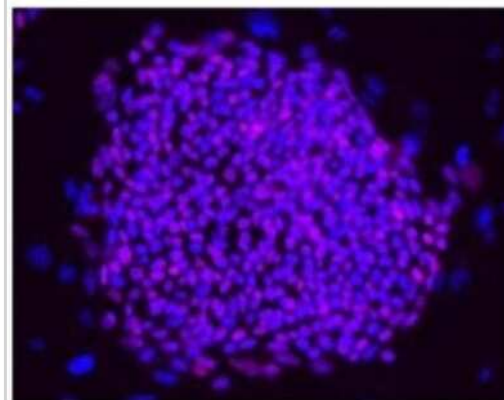
Western Blot: OCT4 Antibody [NBP2-15053] - Sample (20 ug of whole cell lysate) A: mouse ESC 12% SDS PAGE; antibody diluted at 1:10000.



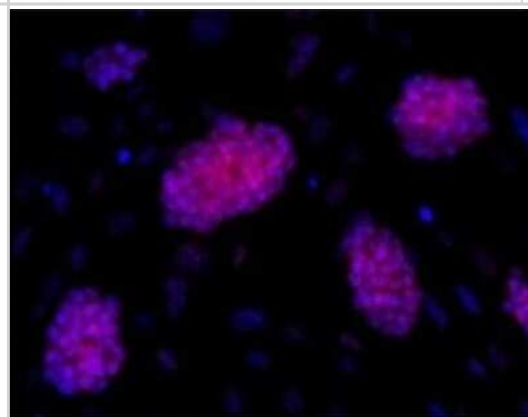
Western Blot: OCT4 Antibody [NBP2-15053] - Whole cell extracts (30 ug) was separated by 10% SDS-PAGE, and the membrane was blotted with OCT4 antibody at a dilution of 1:50000.



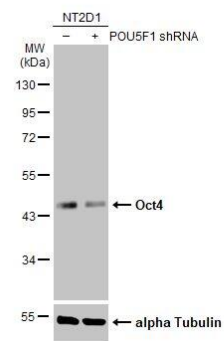
Immunocytochemistry/Immunofluorescence: OCT4 Antibody [NBP2-15053] - Analysis of hESCs on CF1 feeders, using antibody at 1:200 dilution.



Immunocytochemistry/Immunofluorescence: OCT4 Antibody [NBP2-15053] - Analysis of mESCs on CF1 feeders, using antibody at 1:200 dilution.



Western Blot: OCT4 Antibody [NBP2-15053] - Non-transfected (–) and transfected (+) NT2D1 whole cell extracts (30 ug) were separated by 10% SDS-PAGE, and the membrane was blotted with Oct4 antibody diluted at 1:200000. The HRP-conjugated anti-rabbit IgG antibody was used to detect the primary antibody.





### **Novus Biologicals USA**

10730 E. Briarwood Avenue  
Centennial, CO 80112  
USA  
Phone: 303.730.1950  
Toll Free: 1.888.506.6887  
Fax: 303.730.1966  
nb-customerservice@bio-techne.com

### **Bio-Techne Canada**

21 Canmotor Ave  
Toronto, ON M8Z 4E6  
Canada  
Phone: 905.827.6400  
Toll Free: 855.668.8722  
Fax: 905.827.6402  
canada.inquires@bio-techne.com

### **Bio-Techne Ltd**

19 Barton Lane  
Abingdon Science Park  
Abingdon, OX14 3NB, United Kingdom  
Phone: (44) (0) 1235 529449  
Free Phone: 0800 37 34 15  
Fax: (44) (0) 1235 533420  
info.EMEA@bio-techne.com

### **General Contact Information**

www.novusbio.com  
Technical Support: nb-technical@bio-techne.com  
Orders: nb-customerservice@bio-techne.com  
General: novus@novusbio.com

### **Products Related to NBP2-15053**

---

HAF008	Goat anti-Rabbit IgG Secondary Antibody [HRP]
NB7160	Goat anti-Rabbit IgG (H+L) Secondary Antibody [HRP]
NBP2-24891	Rabbit IgG Isotype Control
NB100-2379PEP	OCT4 Antibody Blocking Peptide

---

### **Limitations**

This product is for research use only and is not approved for use in humans or in clinical diagnosis. Primary Antibodies are guaranteed for 1 year from date of receipt.

For more information on our 100% guarantee, please visit [www.novusbio.com/guarantee](http://www.novusbio.com/guarantee)

Earn gift cards/discounts by submitting a review: [www.novusbio.com/reviews/submit/NBP2-15053](http://www.novusbio.com/reviews/submit/NBP2-15053)

Earn gift cards/discounts by submitting a publication using this product:  
[www.novusbio.com/publications](http://www.novusbio.com/publications)

