

Product Datasheet

Islet-1 Antibody - BSA Free

NBP2-14999

Unit Size: 0.1 ml

Aliquot and store at -20C or -80C. Avoid freeze-thaw cycles.

www.novusbio.com



technical@novusbio.com

Publications: 4

Protocols, Publications, Related Products, Reviews, Research Tools and Images at:
www.novusbio.com/NBP2-14999

Updated 2/23/2025 v.20.1

Earn rewards for product
reviews and publications.

Submit a publication at www.novusbio.com/publications

Submit a review at www.novusbio.com/reviews/destination/NBP2-14999



NBP2-14999

Islet-1 Antibody - BSA Free

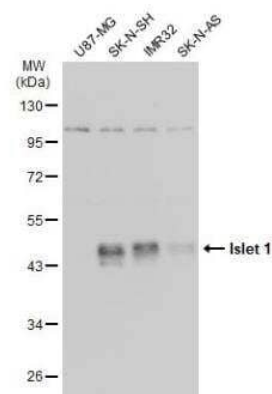
Product Information	
Unit Size	0.1 ml
Concentration	Concentrations vary lot to lot. See vial label for concentration. If unlisted please contact technical services.
Storage	Aliquot and store at -20C or -80C. Avoid freeze-thaw cycles.
Clonality	Polyclonal
Preservative	0.025% Proclin 300
Isotype	IgG
Purity	Antigen Affinity-purified
Buffer	PBS (pH 7), 20% Glycerol
Target Molecular Weight	39 kDa

Product Description	
Host	Rabbit
Gene ID	3670
Gene Symbol	ISL1
Species	Human, Mouse, Rat, Zebrafish
Reactivity Notes	Xenopus laevis (96%), Japanese medaka (97%).
Immunogen	Recombinant protein encompassing a sequence within the center region of human Islet-1. The exact sequence is proprietary.

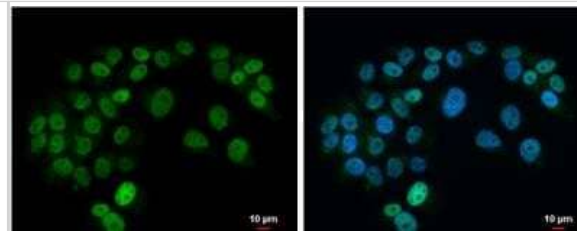
Product Application Details	
Applications	Western Blot, Immunocytochemistry/ Immunofluorescence, Immunohistochemistry, Immunohistochemistry-Frozen, Immunohistochemistry-Paraffin, Immunohistochemistry Whole-Mount
Recommended Dilutions	Western Blot 1:5000-1:20000, Immunohistochemistry 1:100-1:1000, Immunocytochemistry/ Immunofluorescence 1:100-1:1000, Immunohistochemistry-Paraffin 1:100-1:1000, Immunohistochemistry-Frozen 1:100-1:1000, Immunohistochemistry Whole-Mount Assay dependent

Images

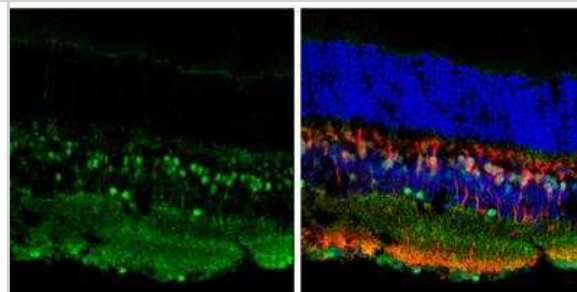
Western Blot: Islet-1 Antibody [NBP2-14999] - Various whole cell extracts (30 ug) were separated by 10% SDS-PAGE, and the membrane was blotted with Islet 1 antibody diluted at 1:10000. The HRP-conjugated anti-rabbit IgG antibody (NBP2-19301) was used to detect the primary antibody.



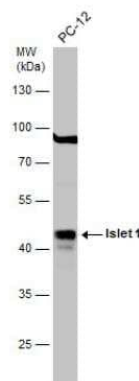
Immunocytochemistry/Immunofluorescence: Islet-1 Antibody [NBP2-14999] - SK-N-AS cells were fixed in 4% paraformaldehyde at RT for 15 min. Green: Islet 1 protein stained by Islet 1 antibody diluted at 1:500. Blue: Hoechst 33342 staining. Scale bar = 10 μ m.



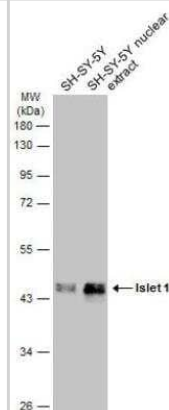
Immunohistochemistry-Frozen: Islet-1 Antibody [NBP2-14999] - Frozen sectioned adult mouse retina. Green: Islet 1 protein stained by Islet 1 antibody diluted at 1:250. Red: Protein kinase C alpha staining. Blue: Fluoroshield with DAPI.



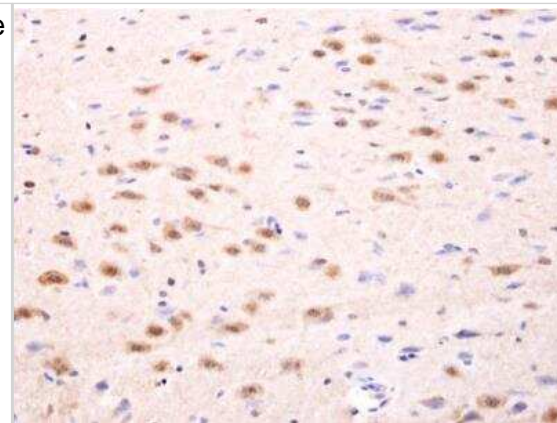
Western Blot: Islet-1 Antibody [NBP2-14999] - Whole cell extract (30 μ g) was separated by 10% SDS-PAGE, and the membrane was blotted with Islet 1 antibody diluted at 1:1000. The HRP-conjugated anti-rabbit IgG antibody was used to detect the primary antibody.



Western Blot: Islet-1 Antibody [NBP2-14999] - SH-SY5Y whole cell and nuclear extracts (30 μ g) were separated by 10% SDS-PAGE, and the membrane was blotted with Islet 1 antibody diluted at 1:10000. The HRP-conjugated anti-rabbit IgG antibody (NBP2-19301) was used to detect the primary antibody.



Immunohistochemistry-Paraffin: Islet-1 Antibody [NBP2-14999] - Rat fore brain. Islet 1 antibody dilution: 1:100. Antigen Retrieval: Trilogy™ (EDTA based, pH 8.0) buffer, 15min



Publications

Sayols S, Klassek J, Werner C et al. Signalling codes for the maintenance and lineage commitment of embryonic gastric epithelial progenitors *Development* 2020-01-28 [PMID: 32878924]

Ma W, Wei X, Gu H et al. Intra-amniotic transplantation of brain-derived neurotrophic factor-modified mesenchymal stem cells treatment for rat fetuses with spina bifida aperta *Stem cell research & therapy* 2022-08-13 [PMID: 35964077]

Details:

Dilution used 1:25, Outbred Wistar rats

Oguri G, Nakajima T, Kikuchi H et al. Allyl isothiocyanate (AITC) activates nonselective cation currents in human cardiac fibroblasts: possible involvement of TRPA1 *Heliyon* 2021-01-01 [PMID: 33458442]

Osking Z, Ayers J I et al. ALS-Linked SOD1 Mutants Enhance Neurite Outgrowth and Branching in Adult Motor Neurons. *iScience* 2019-01-25 [PMID: 30639851] (ICC/IF, Mouse)



Novus Biologicals USA

10730 E. Briarwood Avenue
Centennial, CO 80112
USA
Phone: 303.730.1950
Toll Free: 1.888.506.6887
Fax: 303.730.1966
nb-customerservice@bio-techne.com

Bio-Techne Canada

21 Canmotor Ave
Toronto, ON M8Z 4E6
Canada
Phone: 905.827.6400
Toll Free: 855.668.8722
Fax: 905.827.6402
canada.inquires@bio-techne.com

Bio-Techne Ltd

19 Barton Lane
Abingdon Science Park
Abingdon, OX14 3NB, United Kingdom
Phone: (44) (0) 1235 529449
Free Phone: 0800 37 34 15
Fax: (44) (0) 1235 533420
info.EMEA@bio-techne.com

General Contact Information

www.novusbio.com
Technical Support: nb-technical@bio-techne.com
Orders: nb-customerservice@bio-techne.com
General: novus@novusbio.com

Products Related to NBP2-14999

HAF008	Goat anti-Rabbit IgG Secondary Antibody [HRP]
NB7160	Goat anti-Rabbit IgG (H+L) Secondary Antibody [HRP]
NBP2-24891	Rabbit IgG Isotype Control
NBP3-21276PEP	Islet-1 Recombinant Protein Antigen

Limitations

This product is for research use only and is not approved for use in humans or in clinical diagnosis. Primary Antibodies are guaranteed for 1 year from date of receipt.

For more information on our 100% guarantee, please visit www.novusbio.com/guarantee

Earn gift cards/discounts by submitting a review: www.novusbio.com/reviews/submit/NBP2-14999

Earn gift cards/discounts by submitting a publication using this product:
www.novusbio.com/publications

