

Product Datasheet

KAT1 Antibody NBP2-14976

Unit Size: 0.1 ml

Aliquot and store at -20C or -80C. Avoid freeze-thaw cycles.

www.novusbio.com



technical@novusbio.com

Protocols, Publications, Related Products, Reviews, Research Tools and Images at:
www.novusbio.com/NBP2-14976

Updated 10/23/2024 v.20.1

Earn rewards for product
reviews and publications.

Submit a publication at www.novusbio.com/publications

Submit a review at www.novusbio.com/reviews/destination/NBP2-14976



NBP2-14976**KAT1 Antibody****Product Information**

Unit Size	0.1 ml
Concentration	Concentrations vary lot to lot. See vial label for concentration. If unlisted please contact technical services.
Storage	Aliquot and store at -20C or -80C. Avoid freeze-thaw cycles.
Clonality	Polyclonal
Preservative	0.025% Proclin 300
Isotype	IgG
Purity	Antigen Affinity-purified
Buffer	PBS (pH 7), 20% Glycerol, 1% BSA

Product Description

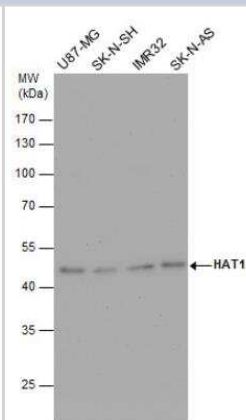
Host	Rabbit
Gene ID	8520
Gene Symbol	HAT1
Species	Human
Immunogen	Full length human KAT1 Recombinant protein.

Product Application Details

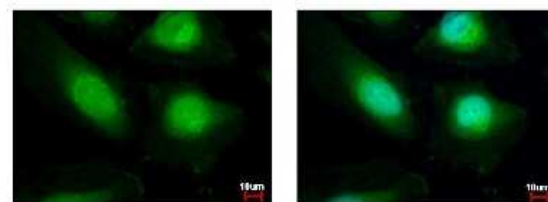
Applications	Western Blot, Immunocytochemistry/ Immunofluorescence, Immunohistochemistry, Immunohistochemistry-Paraffin, Immunoprecipitation
Recommended Dilutions	Western Blot 1:5000-1:20000, Immunohistochemistry 10 - 1:500, Immunocytochemistry/ Immunofluorescence 1:100-1:1000, Immunoprecipitation 1:100-1:500, Immunohistochemistry-Paraffin 1:100-1:1000

Images

Western Blot: KAT1 Antibody [NBP2-14976] - KAT1 antibody detects KAT1 protein by Western blot analysis. Various whole cell extracts (30 ug) were separated by 10% SDS-PAGE, and the membrane was blotted with KAT1 antibody diluted by 1:10000.



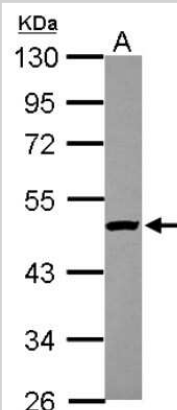
Immunocytochemistry/Immunofluorescence: KAT1 Antibody [NBP2-14976] - Sample: HeLa cells were fixed in 4% paraformaldehyde at RT for 15 min. Green: HAT1 protein stained by HAT1 antibody diluted at 1:500. Blue: Hoechst 33342 staining.



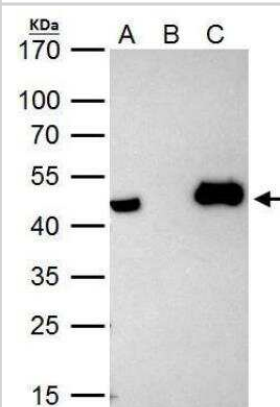
Immunohistochemistry-Paraffin: KAT1 Antibody [NBP2-14976] - Paraffin-embedded Colon, using antibody at 1:250 dilution.



Western Blot: KAT1 Antibody [NBP2-14976] - Sample (30 ug of whole cell lysate) A: U87-MG 10% SDS PAGE; antibody diluted at 1:10000.



Immunoprecipitation: KAT1 Antibody [NBP2-14976] - KAT1 antibody immunoprecipitates KAT1 protein in IP experiments. IP Sample: HeLa whole cell lysate/extract A. 40 ug HeLa whole cell lysate/extract B. Control with 2 ug of preimmune rabbit IgG C. Immunoprecipitation of KAT1 protein by 2 ug of KAT1 antibody 12% SDS-PAGE The immunoprecipitated KAT1 protein was detected by KAT1 antibody diluted at 1:1000.





Novus Biologicals USA

10730 E. Briarwood Avenue
Centennial, CO 80112
USA
Phone: 303.730.1950
Toll Free: 1.888.506.6887
Fax: 303.730.1966
nb-customerservice@bio-techne.com

Bio-Techne Canada

21 Canmotor Ave
Toronto, ON M8Z 4E6
Canada
Phone: 905.827.6400
Toll Free: 855.668.8722
Fax: 905.827.6402
canada.inquires@bio-techne.com

Bio-Techne Ltd

19 Barton Lane
Abingdon Science Park
Abingdon, OX14 3NB, United Kingdom
Phone: (44) (0) 1235 529449
Free Phone: 0800 37 34 15
Fax: (44) (0) 1235 533420
info.EMEA@bio-techne.com

General Contact Information

www.novusbio.com
Technical Support: nb-technical@bio-techne.com
Orders: nb-customerservice@bio-techne.com
General: novus@novusbio.com

Products Related to NBP2-14976

HAF008	Goat anti-Rabbit IgG Secondary Antibody [HRP]
NB7160	Goat anti-Rabbit IgG (H+L) Secondary Antibody [HRP]
NBP2-24891	Rabbit IgG Isotype Control
NBP1-87835PEP	KAT1 Recombinant Protein Antigen

Limitations

This product is for research use only and is not approved for use in humans or in clinical diagnosis. Primary Antibodies are guaranteed for 1 year from date of receipt.

For more information on our 100% guarantee, please visit www.novusbio.com/guarantee

Earn gift cards/discounts by submitting a review: www.novusbio.com/reviews/submit/NBP2-14976

Earn gift cards/discounts by submitting a publication using this product:
www.novusbio.com/publications

