

# Product Datasheet

## PSMC1 Antibody - BSA Free

### NBP2-14857

Unit Size: 100 ul

Store at 4C. Do not freeze.

[www.novusbio.com](http://www.novusbio.com)



[technical@novusbio.com](mailto:technical@novusbio.com)

Protocols, Publications, Related Products, Reviews, Research Tools and Images at:  
[www.novusbio.com/NBP2-14857](http://www.novusbio.com/NBP2-14857)

Updated 2/23/2025 v.20.1

Earn rewards for product  
reviews and publications.

Submit a publication at [www.novusbio.com/publications](http://www.novusbio.com/publications)

Submit a review at [www.novusbio.com/reviews/destination/NBP2-14857](http://www.novusbio.com/reviews/destination/NBP2-14857)



**NBP2-14857**

PSMC1 Antibody - BSA Free

Product Information	
Unit Size	100 ul
Concentration	1.0 mg/ml
Storage	Store at 4C. Do not freeze.
Clonality	Polyclonal
Preservative	0.09% Sodium Azide
Isotype	IgG
Purity	Immunogen affinity purified
Buffer	Tris-Citrate/Phosphate (pH 7.0 - 8.0)

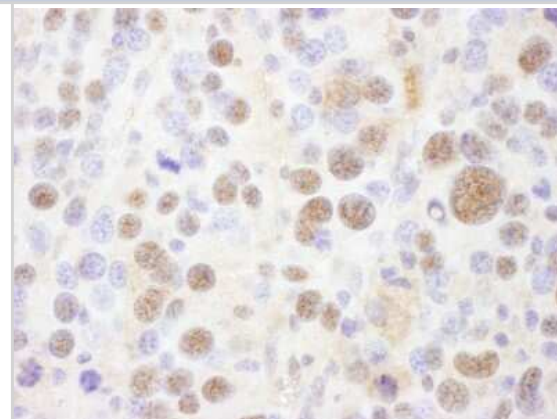
Product Description	
Host	Rabbit
Gene ID	5700
Gene Symbol	PSMC1
Species	Human, Mouse
Immunogen	This antibody maps to a region between residue 390 and 440 of human Proteasome (prosome, macropain) Subunit, ATPase, 1 using the numbering given in entry NP_002793.2 (GeneID 5700).

Product Application Details	
Applications	Western Blot, Immunohistochemistry, Immunohistochemistry-Paraffin, Immunoprecipitation
Recommended Dilutions	Western Blot 1:2000-1:10000, Immunohistochemistry 1:500 - 1:2000, Immunoprecipitation 2-10 ug/mg lysate, Immunohistochemistry-Paraffin 1:500 - 1:2000
Application Notes	Epitope retrieval with citrate buffer pH6.0 is recommended for FFPE tissue sections.

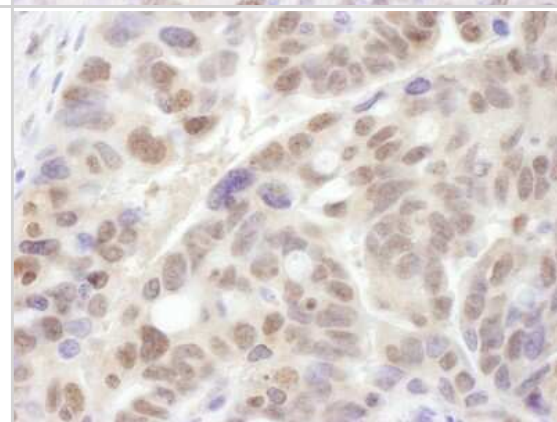


## Images

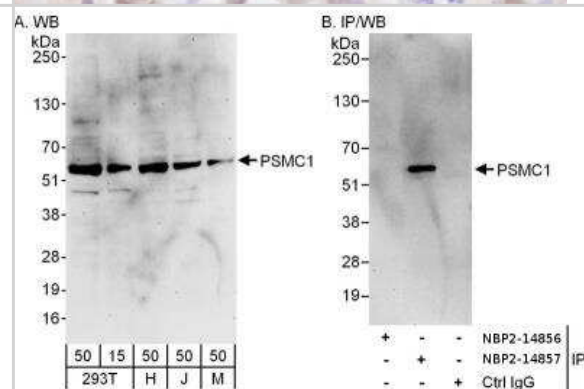
**Immunohistochemistry-Paraffin: PSMC1 Antibody [NBP2-14857] -**  
**Sample:** FFPE section of mouse renal cell carcinoma. **Antibody:** Affinity purified rabbit anti- PSMC1 used at a dilution of 1:1,000 (1ug/ml).  
**Detection:** DAB



**Immunohistochemistry-Paraffin: PSMC1 Antibody [NBP2-14857] -**  
**Sample:** FFPE section of human ovarian carcinoma. **Antibody:** Affinity purified rabbit anti- PSMC1 used at a dilution of 1:1,000 (1ug/ml).  
**Detection:** DAB



**Immunoprecipitation: PSMC1 Antibody [NBP2-14857] - Samples:** Whole cell lysate from 293T (15 and 50 ug for WB; 1 mg for IP, 20% of IP loaded), HeLa (H; 50 ug), Jurkat (J; 50 ug) and mouse NIH3T3 (M; 50 ug) cells. **Antibodies:** Affinity purified rabbit anti-PSMC1 antibody used for WB at 0.4 ug/ml (A) and 1 ug/ml (B) and used for IP at 6 ug/mg lysate. PSMC1 was successfully immunoprecipitated by rabbit anti-PSMC1 antibody, which recognizes a downstream epitope. **Detection:** Chemiluminescence with exposure times of 3 minutes (A) and 30 seconds (B).





### **Novus Biologicals USA**

10730 E. Briarwood Avenue  
Centennial, CO 80112  
USA  
Phone: 303.730.1950  
Toll Free: 1.888.506.6887  
Fax: 303.730.1966  
nb-customerservice@bio-techne.com

### **Bio-Techne Canada**

21 Canmotor Ave  
Toronto, ON M8Z 4E6  
Canada  
Phone: 905.827.6400  
Toll Free: 855.668.8722  
Fax: 905.827.6402  
canada.inquires@bio-techne.com

### **Bio-Techne Ltd**

19 Barton Lane  
Abingdon Science Park  
Abingdon, OX14 3NB, United Kingdom  
Phone: (44) (0) 1235 529449  
Free Phone: 0800 37 34 15  
Fax: (44) (0) 1235 533420  
info.EMEA@bio-techne.com

### **General Contact Information**

www.novusbio.com  
Technical Support: nb-technical@bio-techne.com  
Orders: nb-customerservice@bio-techne.com  
General: novus@novusbio.com

### **Products Related to NBP2-14857**

---

HAF008	Goat anti-Rabbit IgG Secondary Antibody [HRP]
NB7160	Goat anti-Rabbit IgG (H+L) Secondary Antibody [HRP]
NBP2-24891	Rabbit IgG Isotype Control
NBP3-17916PEP	PSMC1 Recombinant Protein Antigen

---

### **Limitations**

This product is for research use only and is not approved for use in humans or in clinical diagnosis. Primary Antibodies are guaranteed for 1 year from date of receipt.

For more information on our 100% guarantee, please visit [www.novusbio.com/guarantee](http://www.novusbio.com/guarantee)

Earn gift cards/discounts by submitting a review: [www.novusbio.com/reviews/submit/NBP2-14857](http://www.novusbio.com/reviews/submit/NBP2-14857)

Earn gift cards/discounts by submitting a publication using this product:  
[www.novusbio.com/publications](http://www.novusbio.com/publications)

