

Product Datasheet

Cyclin D2 Antibody - BSA Free

NBP2-14460

Unit Size: 0.1 ml

Store at 4C short term. Aliquot and store at -20C long term. Avoid freeze-thaw cycles.

www.novusbio.com



technical@novusbio.com

Reviews: 1 Publications: 7

Protocols, Publications, Related Products, Reviews, Research Tools and Images at:
www.novusbio.com/NBP2-14460

Updated 2/23/2025 v.20.1

Earn rewards for product reviews and publications.

Submit a publication at www.novusbio.com/publications

Submit a review at www.novusbio.com/reviews/destination/NBP2-14460



NBP2-14460

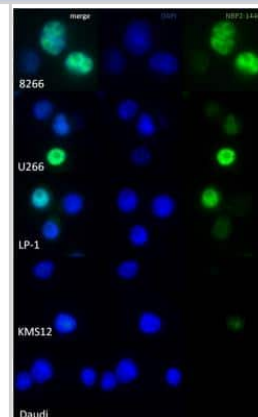
Cyclin D2 Antibody - BSA Free

Product Information	
Unit Size	0.1 ml
Concentration	Concentrations vary lot to lot. See vial label for concentration. If unlisted please contact technical services.
Storage	Store at 4C short term. Aliquot and store at -20C long term. Avoid freeze-thaw cycles.
Clonality	Polyclonal
Preservative	0.02% Sodium Azide
Isotype	IgG
Purity	Immunogen affinity purified
Buffer	PBS (pH 7.2) and 40% Glycerol
Product Description	
Host	Rabbit
Gene ID	894
Gene Symbol	CCND2
Species	Human, Rat
Reactivity Notes	Use in Rat reported in scientific literature (PMID:33326842) Reactivity reported in scientific literature (PMID: 23227862).
Immunogen	This antibody was developed against Recombinant Protein corresponding to amino acids: QEQIEAVLLNSLQQYRQDQRDGSKEDELQASTPTDVRGIDL
Product Application Details	
Applications	Immunocytochemistry/ Immunofluorescence, Immunohistochemistry
Recommended Dilutions	Immunohistochemistry Image collected and cropped by CiteAb from the following publication (http://dx.plos.org/10.1371/journal.pone.0161859), Immunocytochemistry/ Immunofluorescence 0.25-2 ug/ml

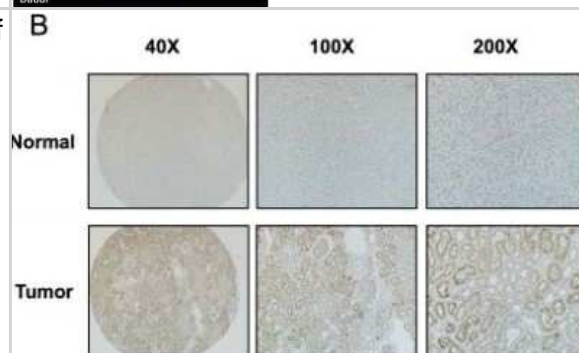


Images

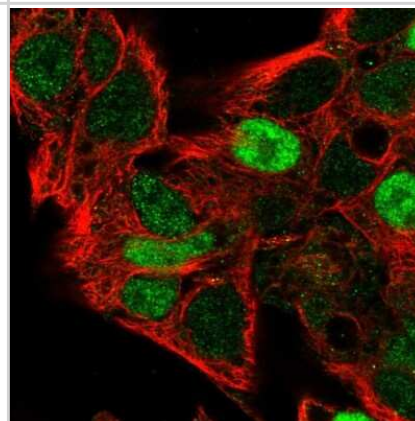
Immunocytochemistry/Immunofluorescence: Cyclin D2 Antibody [NBP2-14460] - Staining of 8226, U266, LP-1, KMS12 and Daudi cells. Image submitted by a verified customer review.



Immunohistochemistry: Cyclin D2 Antibody [NBP2-14460] - Evaluation of Cyclin D2 expression in RCC samples. Immunohistochemistry staining showed a significant decrease of Cyclin D2 protein expression in 43 paired RCC samples in 40X, 100X, 200X magnification. Image collected and cropped by CiteAb from the following publication (<https://dx.plos.org/10.1371/journal.pone.0161859>), licensed under a CC-BY license.



Immunocytochemistry/Immunofluorescence: Cyclin D2 Antibody [NBP2-14460] - Immunofluorescent staining of human cell line Hep G2 shows localization to nucleoplasm. Antibody staining is shown in green.



Publications

Mahapatra S, Sharma MVR, Brownson B et al. Cardiac inducing colonies halt fibroblast activation and induce cardiac/endothelial cells to move and expand via paracrine signaling Molecular biology of the cell 2022-06-02 [PMID: 35653297] (ICC/IF, Human)

Mahapatra S Secretion of Cardioprotective Factors from Cardiac Inducing Colonies (Cics) Derived from Germline Pluripotent Stem Cells (Hgpscs) to Combat Myocardial Fibrosis Thesis 1905-07-13

Mahapatra S Secretion of Cardioprotective Factors from Cardiac Inducing Colonies (Cics) Derived from Germline Pluripotent Stem Cells (Hgpscs) to Combat Myocardial Fibrosis Thesis Jul 13 1905 12:00AM

Huang H, Yu X, Han X, et al. Piwil1 Regulates Glioma Stem Cell Maintenance and Glioblastoma Progression Cell reports 2021-01-05 [PMID: 33406417] (WB, Human)

Luo G, Xiao L, Wang D et al. Resveratrol attenuates excessive ethanol exposure-induced beta -cell senescence in rats: A critical role for the NAD⁺/SIRT1-p38MAPK/p16 pathway The Journal of nutritional biochemistry 2020-12-13 [PMID: 33326842] (ICC/IF, Rat)

Wang L, Cui Y, Zhang L et al. The Silencing of CCND2 by Promoter Aberrant Methylation in Renal Cell Cancer and Analysis of the Correlation between CCND2 Methylation Status and Clinical Features. PLoS ONE 2016-09-02 [PMID: 27583477] (IHC-P)

Danielsson F, Wiking M, Mahdessian D et al. RNA deep sequencing as a tool for selection of cell lines for systematic subcellular localization of all human proteins. J Proteome Res 2013-01-04 [PMID: 23227862]





Novus Biologicals USA

10730 E. Briarwood Avenue
Centennial, CO 80112
USA
Phone: 303.730.1950
Toll Free: 1.888.506.6887
Fax: 303.730.1966
nb-customerservice@bio-techne.com

Bio-Techne Canada

21 Canmotor Ave
Toronto, ON M8Z 4E6
Canada
Phone: 905.827.6400
Toll Free: 855.668.8722
Fax: 905.827.6402
canada.inquires@bio-techne.com

Bio-Techne Ltd

19 Barton Lane
Abingdon Science Park
Abingdon, OX14 3NB, United Kingdom
Phone: (44) (0) 1235 529449
Free Phone: 0800 37 34 15
Fax: (44) (0) 1235 533420
info.EMEA@bio-techne.com

General Contact Information

www.novusbio.com
Technical Support: nb-technical@bio-techne.com
Orders: nb-customerservice@bio-techne.com
General: novus@novusbio.com

Products Related to NBP2-14460

NBP2-14460PEP	Cyclin D2 Recombinant Protein Antigen
HAF008	Goat anti-Rabbit IgG Secondary Antibody [HRP]
NB7160	Goat anti-Rabbit IgG (H+L) Secondary Antibody [HRP]
NBP2-24891	Rabbit IgG Isotype Control

Limitations

This product is for research use only and is not approved for use in humans or in clinical diagnosis. Primary Antibodies are guaranteed for 1 year from date of receipt.

For more information on our 100% guarantee, please visit www.novusbio.com/guarantee

Earn gift cards/discounts by submitting a review: www.novusbio.com/reviews/submit/NBP2-14460

Earn gift cards/discounts by submitting a publication using this product:
www.novusbio.com/publications

