

# Product Datasheet

## Siglec-9 Antibody (MM0552-6K12) - Azide and BSA Free NBP2-11905

Unit Size: 0.1 mg

Store at 4C short term. Aliquot and store at -20C long term. Avoid freeze-thaw cycles.

[www.novusbio.com](http://www.novusbio.com)



[technical@novusbio.com](mailto:technical@novusbio.com)

Protocols, Publications, Related Products, Reviews, Research Tools and Images at:  
[www.novusbio.com/NBP2-11905](http://www.novusbio.com/NBP2-11905)

Updated 4/7/2025 v.20.1

Earn rewards for product  
reviews and publications.

Submit a publication at [www.novusbio.com/publications](http://www.novusbio.com/publications)

Submit a review at [www.novusbio.com/reviews/destination/NBP2-11905](http://www.novusbio.com/reviews/destination/NBP2-11905)



**NBP2-11905**

Siglec-9 Antibody (MM0552-6K12) - Azide and BSA Free

**Product Information**

<b>Unit Size</b>	0.1 mg
<b>Concentration</b>	LYOPH mg/ml
<b>Storage</b>	Store at 4C short term. Aliquot and store at -20C long term. Avoid freeze-thaw cycles.
<b>Clonality</b>	Monoclonal
<b>Clone</b>	MM0552-6K12
<b>Preservative</b>	No Preservative
<b>Reconstitution Instructions</b>	Reconstitute with sterilized PBS to a final concentration of 0.5 mg/ml.
<b>Isotype</b>	IgG2
<b>Purity</b>	Protein G purified
<b>Buffer</b>	Lyophilized from a 0.2 um filtered solution in PBS. 0.025 mg size is provided in liquid form, PBS

**Product Description**

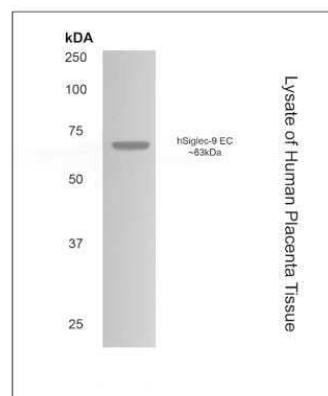
<b>Host</b>	Mouse
<b>Gene ID</b>	27180
<b>Gene Symbol</b>	SIGLEC9
<b>Species</b>	Human
<b>Immunogen</b>	Human recombinant Siglec-9 (extracellular domain)

**Product Application Details**

<b>Applications</b>	Western Blot, Block/Neutralize
<b>Recommended Dilutions</b>	Western Blot 1:500-1:1000, Block/Neutralize

**Images**

Western Blot: Siglec-9 Antibody (MM0552-6K12) - Azide and BSA Free [NBP2-11905] - Lysate of human placenta tissue with mouse anti-human Siglec-9 antibody.





### **Novus Biologicals USA**

10730 E. Briarwood Avenue  
Centennial, CO 80112  
USA  
Phone: 303.730.1950  
Toll Free: 1.888.506.6887  
Fax: 303.730.1966  
nb-customerservice@bio-techne.com

### **Bio-Techne Canada**

21 Canmotor Ave  
Toronto, ON M8Z 4E6  
Canada  
Phone: 905.827.6400  
Toll Free: 855.668.8722  
Fax: 905.827.6402  
canada.inquires@bio-techne.com

### **Bio-Techne Ltd**

19 Barton Lane  
Abingdon Science Park  
Abingdon, OX14 3NB, United Kingdom  
Phone: (44) (0) 1235 529449  
Free Phone: 0800 37 34 15  
Fax: (44) (0) 1235 533420  
info.EMEA@bio-techne.com

### **General Contact Information**

www.novusbio.com  
Technical Support: nb-technical@bio-  
techne.com  
Orders: nb-customerservice@bio-techne.com  
General: novus@novusbio.com

### **Limitations**

This product is for research use only and is not approved for use in humans or in clinical diagnosis. Primary Antibodies are guaranteed for 1 year from date of receipt.

For more information on our 100% guarantee, please visit [www.novusbio.com/guarantee](http://www.novusbio.com/guarantee)

Earn gift cards/discounts by submitting a review: [www.novusbio.com/reviews/submit/NBP2-11905](http://www.novusbio.com/reviews/submit/NBP2-11905)

Earn gift cards/discounts by submitting a publication using this product:  
[www.novusbio.com/publications](http://www.novusbio.com/publications)

