

Product Datasheet

NKp46/NCR1 Antibody (MM0491-8F24) - Azide and BSA Free NBP2-11820

Unit Size: 0.1 mg

Aliquot and store at -20C or -80C. Avoid freeze-thaw cycles.

www.novusbio.com



technical@novusbio.com

Reviews: 1 Publications: 1

Protocols, Publications, Related Products, Reviews, Research Tools and Images at:
www.novusbio.com/NBP2-11820

Updated 10/23/2024 v.20.1

Earn rewards for product reviews and publications.

Submit a publication at www.novusbio.com/publications

Submit a review at www.novusbio.com/reviews/destination/NBP2-11820



NBP2-11820

NKp46/NCR1 Antibody (MM0491-8F24) - Azide and BSA Free

Product Information	
Unit Size	0.1 mg
Concentration	LYOPH mg/ml
Storage	Aliquot and store at -20C or -80C. Avoid freeze-thaw cycles.
Clonality	Monoclonal
Clone	MM0491-8F24
Preservative	No Preservative
Reconstitution Instructions	Reconstitute with sterilized PBS to a final concentration of 0.5 mg/ml.
Isotype	IgG2
Purity	Protein G purified
Buffer	Lyophilized from a 0.2 um filtered solution in PBS. 0.025 mg size is provided in liquid form, PBS

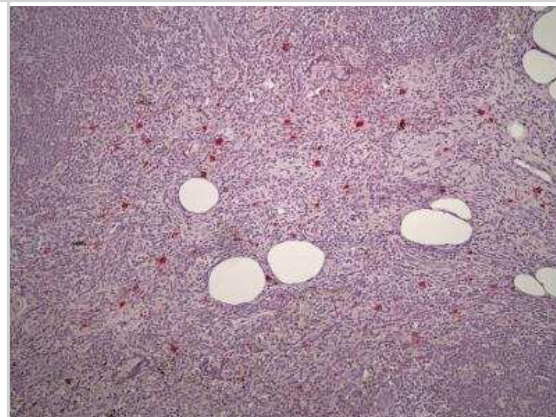
Product Description	
Host	Mouse
Gene ID	9437
Gene Symbol	NCR1
Species	Human, Mouse
Reactivity Notes	Mouse reactivity reported in scientific literature (PMID: 29078276).
Immunogen	Human recombinant NKp46/NCR1

Product Application Details	
Applications	Western Blot, Flow Cytometry, Immunohistochemistry, Immunohistochemistry-Frozen, Immunohistochemistry-Paraffin, CyTOF-ready
Recommended Dilutions	Western Blot 1:500-1:1000, Flow Cytometry 1:50-1:100, Immunohistochemistry 1:10-1:500, Immunohistochemistry-Paraffin, Immunohistochemistry-Frozen 1:20-1:100, CyTOF-ready
Application Notes	This antibody is Cytof ready.

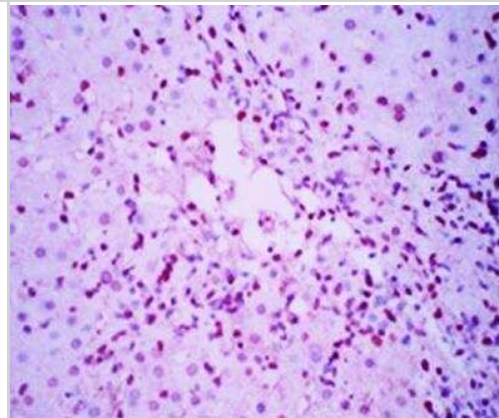


Images

Immunohistochemistry-Paraffin: NKp46/NCR1 Antibody (MM0491-8F24) [NBP2-11820] - Human lymph node metastasis section stained for Nkp46, antibody dilution 1:70, incubated O/N at 4C. Antigen retrieval in citrate buffer. Image from verified customer review.



Immunohistochemistry-Frozen: NKp46/NCR1 Antibody (MM0491-8F24) [NBP2-11820] - Mouse anti human NKp46 in diseased human liver tissues (frozen section).



Publications

Mgrditchian T, Arakelian T, Paggetti J et al. Targeting autophagy inhibits melanoma growth by enhancing NK cells infiltration in a CCL5-dependent manner. Proc Natl Acad Sci U S A. 2017 Oct 31 [PMID: 29078276] (IHC-P, Mouse)



Novus Biologicals USA

10730 E. Briarwood Avenue
Centennial, CO 80112
USA
Phone: 303.730.1950
Toll Free: 1.888.506.6887
Fax: 303.730.1966
nb-customerservice@bio-techne.com

Bio-Techne Canada

21 Canmotor Ave
Toronto, ON M8Z 4E6
Canada
Phone: 905.827.6400
Toll Free: 855.668.8722
Fax: 905.827.6402
canada.inquires@bio-techne.com

Bio-Techne Ltd

19 Barton Lane
Abingdon Science Park
Abingdon, OX14 3NB, United Kingdom
Phone: (44) (0) 1235 529449
Free Phone: 0800 37 34 15
Fax: (44) (0) 1235 533420
info.EMEA@bio-techne.com

General Contact Information

www.novusbio.com
Technical Support: nb-technical@bio-techne.com
Orders: nb-customerservice@bio-techne.com
General: novus@novusbio.com

Products Related to NBP2-11820

HAF007	Goat anti-Mouse IgG Secondary Antibody [HRP]
NB720-B	Rabbit anti-Mouse IgG (H+L) Secondary Antibody [Biotin]
NBP2-11820PE	NKp46/NCR1 Antibody (MM0491-8F24) [PE]
285-IF-100	IFN-gamma [Unconjugated]

Limitations

This product is for research use only and is not approved for use in humans or in clinical diagnosis. Primary Antibodies are guaranteed for 1 year from date of receipt.

For more information on our 100% guarantee, please visit www.novusbio.com/guarantee

Earn gift cards/discounts by submitting a review: www.novusbio.com/reviews/submit/NBP2-11820

Earn gift cards/discounts by submitting a publication using this product:
www.novusbio.com/publications

