

Product Datasheet

XLF Antibody (OTI3D6) NBP2-03275

Unit Size: 0.1 ml

Store at -20C. Avoid freeze-thaw cycles.

www.novusbio.com



technical@novusbio.com

Publications: 2

Protocols, Publications, Related Products, Reviews, Research Tools and Images at:
www.novusbio.com/NBP2-03275

Updated 10/23/2024 v.20.1

**Earn rewards for product
reviews and publications.**

Submit a publication at www.novusbio.com/publications

Submit a review at www.novusbio.com/reviews/destination/NBP2-03275



NBP2-03275

XLF Antibody (OTI3D6)

Product Information

Unit Size	0.1 ml
Concentration	0.52 mg/ml
Storage	Store at -20C. Avoid freeze-thaw cycles.
Clonality	Monoclonal
Clone	OTI3D6
Preservative	0.02% Sodium Azide
Isotype	IgG1
Purity	Immunogen affinity purified
Buffer	PBS (pH 7.3), 1.0% BSA and 50% Glycerol
Target Molecular Weight	33.2 kDa

Product Description

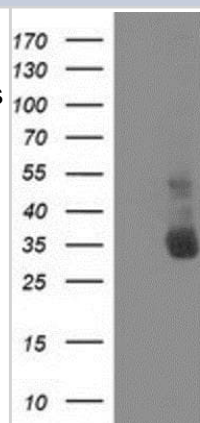
Host	Mouse
Gene ID	79840
Gene Symbol	NHEJ1
Species	Human, Monkey
Immunogen	Full length human recombinant protein of human NHEJ1 (NP_079058) produced in HEK293T cell.

Product Application Details

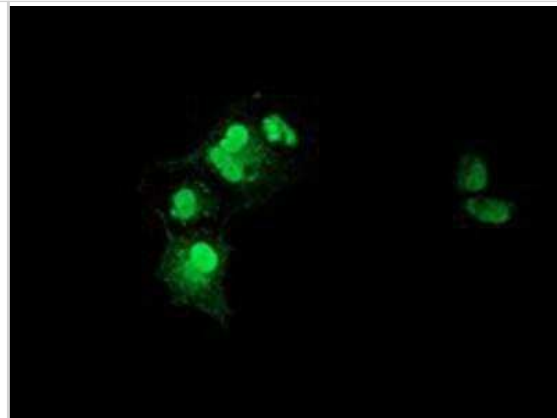
Applications	Western Blot, Flow Cytometry, Immunocytochemistry/ Immunofluorescence, Immunohistochemistry, Immunohistochemistry-Paraffin
Recommended Dilutions	Western Blot 1:1000-2000, Flow Cytometry 1:100, Immunohistochemistry 1:150, Immunocytochemistry/ Immunofluorescence 1:100, Immunohistochemistry-Paraffin 1:150

Images

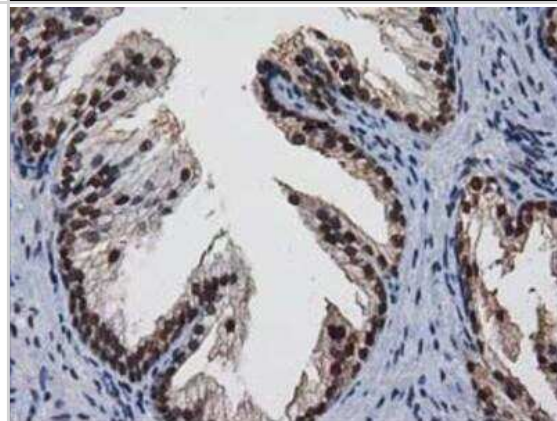
Western Blot: XLF Antibody (3D6) [NBP2-03275] - HEK293T cells were transfected with the pCMV6-ENTRY control (Left lane) or pCMV6-ENTRY XLF (Right lane) cDNA for 48 hrs and lysed. Equivalent amounts of cell lysates (5 ug per lane) were separated by SDS-PAGE and immunoblotted with anti-XLF.



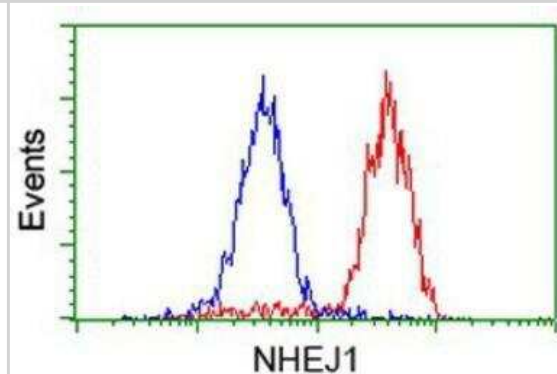
Immunocytochemistry/Immunofluorescence: XLF Antibody (3D6) [NBP2-03275] - Staining of COS7 cells transiently transfected by pCMV6-ENTRY XLF.



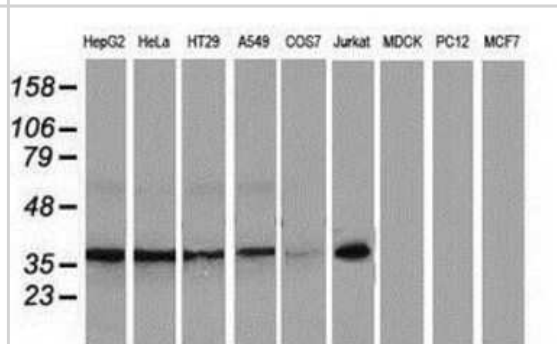
Immunohistochemistry-Paraffin: XLF Antibody (3D6) [NBP2-03275] - Staining of paraffin-embedded Human prostate tissue using anti-XLF mouse monoclonal antibody.



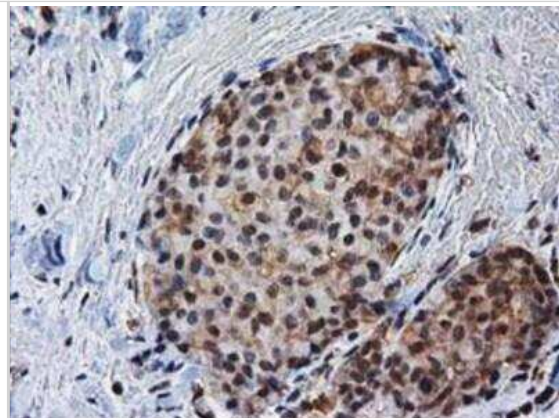
Flow Cytometry: XLF Antibody (3D6) [NBP2-03275] - Analysis of HeLa cells, using anti-XLF antibody, (Red), compared to a nonspecific negative control antibody (Blue).



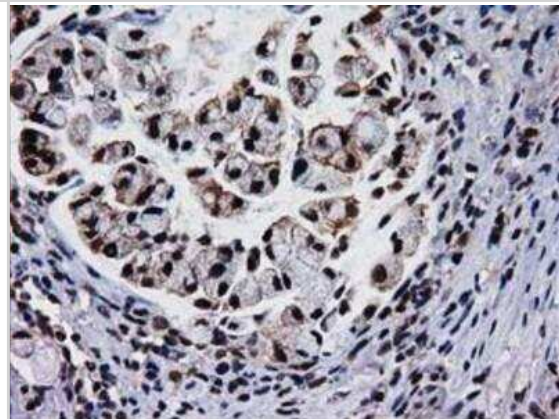
Western Blot: XLF Antibody (3D6) [NBP2-03275] Analysis of extracts (35ug) from 9 different cell lines by using anti-XLF monoclonal antibody.



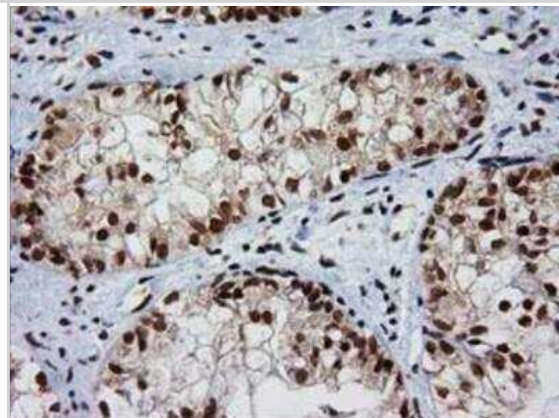
Immunohistochemistry-Paraffin: XLF Antibody (3D6) [NBP2-03275] - Staining of paraffin-embedded Adenocarcinoma of Human breast tissue using anti-XLF mouse monoclonal antibody.



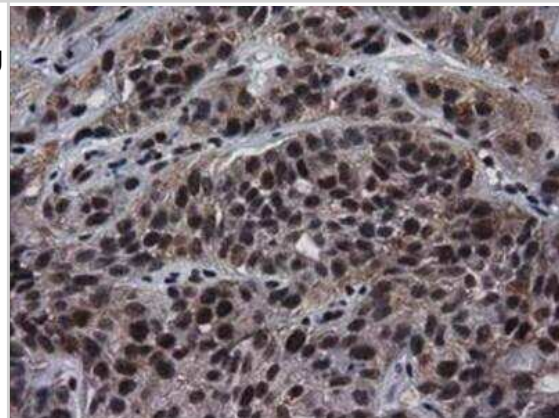
Immunohistochemistry-Paraffin: XLF Antibody (3D6) [NBP2-03275] - Staining of paraffin-embedded Adenocarcinoma of Human colon tissue using anti-XLF mouse monoclonal antibody.



Immunohistochemistry-Paraffin: XLF Antibody (3D6) [NBP2-03275] - Staining of paraffin-embedded Adenocarcinoma of Human ovary tissue using anti-XLF mouse monoclonal antibody.



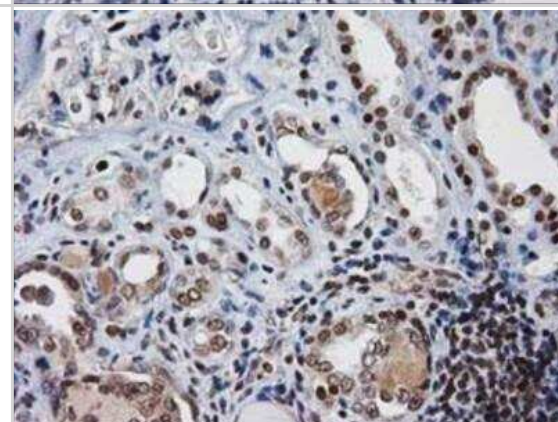
Immunohistochemistry-Paraffin: XLF Antibody (3D6) [NBP2-03275] - Staining of paraffin-embedded Carcinoma of Human bladder tissue using anti-XLF mouse monoclonal antibody.



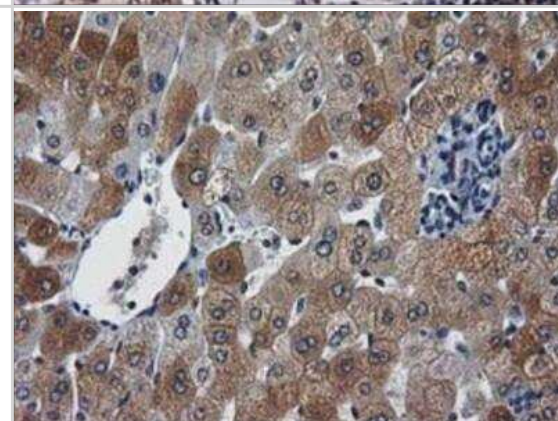
Immunohistochemistry-Paraffin: XLF Antibody (3D6) [NBP2-03275] - Staining of paraffin-embedded Human endometrium tissue using anti-XLF mouse monoclonal antibody.



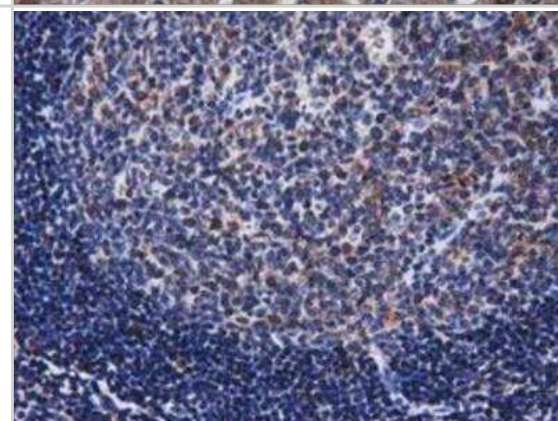
Immunohistochemistry-Paraffin: XLF Antibody (3D6) [NBP2-03275] - Staining of paraffin-embedded Human Kidney tissue using anti-XLF mouse monoclonal antibody.



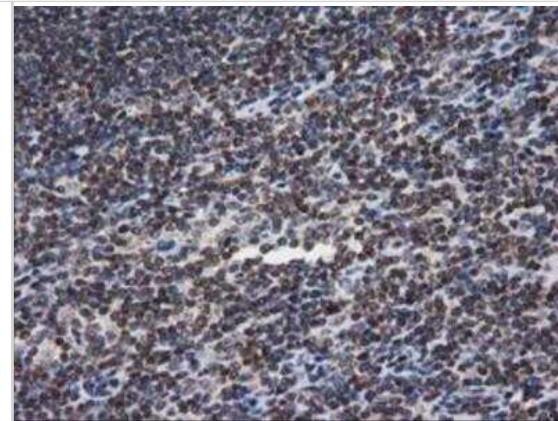
Immunohistochemistry-Paraffin: XLF Antibody (3D6) [NBP2-03275] - Staining of paraffin-embedded Human liver tissue using anti-XLF mouse monoclonal antibody.



Immunohistochemistry-Paraffin: XLF Antibody (3D6) [NBP2-03275] - Staining of paraffin-embedded Human lymph node tissue using anti-XLF mouse monoclonal antibody.



Immunohistochemistry-Paraffin: XLF Antibody (3D6) [NBP2-03275] - Staining of paraffin-embedded Human lymphoma tissue using anti-XLF mouse monoclonal antibody.



Publications

Nemoz C, Ropars V, Frit P et al. XLF and APLF bind ku80 at two remote sites to ensure DNA repair by non-homologous end joining. Nat. Struct. Mol. Biol. 2018-10-01 [PMID: 30291363] (ICC/IF, Human)

Reid DA, Keegan S, Leo-Macias A et al. Organization and dynamics of the nonhomologous end-joining machinery during DNA double-strand break repair. Proc Natl Acad Sci U S A 2015-05-19 [PMID: 25941401] (WB, Human)



Novus Biologicals USA

10730 E. Briarwood Avenue
Centennial, CO 80112
USA
Phone: 303.730.1950
Toll Free: 1.888.506.6887
Fax: 303.730.1966
nb-customerservice@bio-techne.com

Bio-Techne Canada

21 Canmotor Ave
Toronto, ON M8Z 4E6
Canada
Phone: 905.827.6400
Toll Free: 855.668.8722
Fax: 905.827.6402
canada.inquires@bio-techne.com

Bio-Techne Ltd

19 Barton Lane
Abingdon Science Park
Abingdon, OX14 3NB, United Kingdom
Phone: (44) (0) 1235 529449
Free Phone: 0800 37 34 15
Fax: (44) (0) 1235 533420
info.EMEA@bio-techne.com

General Contact Information

www.novusbio.com
Technical Support: nb-technical@bio-techne.com
Orders: nb-customerservice@bio-techne.com
General: novus@novusbio.com

Products Related to NBP2-03275

HAF007	Goat anti-Mouse IgG Secondary Antibody [HRP]
NB720-B	Rabbit anti-Mouse IgG (H+L) Secondary Antibody [Biotin]
NBP1-97005-0.5mg	Mouse IgG1 Isotype Control (MG1)
NBP2-23291	Recombinant Human XLF His Protein

Limitations

This product is for research use only and is not approved for use in humans or in clinical diagnosis. Primary Antibodies are guaranteed for 1 year from date of receipt.

For more information on our 100% guarantee, please visit www.novusbio.com/guarantee

Earn gift cards/discounts by submitting a review: www.novusbio.com/reviews/submit/NBP2-03275

Earn gift cards/discounts by submitting a publication using this product:
www.novusbio.com/publications

