

# Product Datasheet

## IMP2/IGF2BP2 Antibody (OTI3F9) NBP2-02627

Unit Size: 0.1 ml

Store at -20C. Avoid freeze-thaw cycles.

[www.novusbio.com](http://www.novusbio.com)



[technical@novusbio.com](mailto:technical@novusbio.com)

Protocols, Publications, Related Products, Reviews, Research Tools and Images at:  
[www.novusbio.com/NBP2-02627](http://www.novusbio.com/NBP2-02627)

Updated 10/23/2024 v.20.1

Earn rewards for product  
reviews and publications.

Submit a publication at [www.novusbio.com/publications](http://www.novusbio.com/publications)

Submit a review at [www.novusbio.com/reviews/destination/NBP2-02627](http://www.novusbio.com/reviews/destination/NBP2-02627)



**NBP2-02627**

IMP2/IGF2BP2 Antibody (OTI3F9)

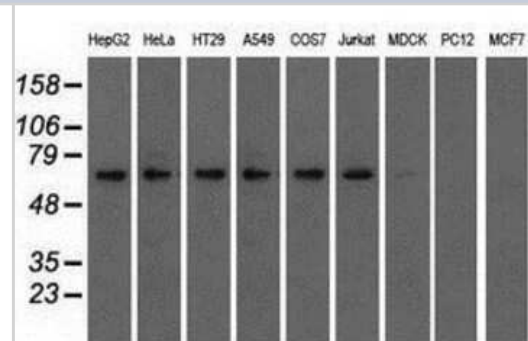
Product Information	
Unit Size	0.1 ml
Concentration	0.6 mg/ml
Storage	Store at -20C. Avoid freeze-thaw cycles.
Clonality	Monoclonal
Clone	OTI3F9
Preservative	0.02% Sodium Azide
Isotype	IgG1
Purity	Immunogen affinity purified
Buffer	PBS (pH 7.3), 1.0% BSA and 50% Glycerol
Target Molecular Weight	65.9 kDa

Product Description	
Host	Mouse
Gene ID	10644
Gene Symbol	IGF2BP2
Species	Human, Mouse, Rat, Canine, Monkey
Reactivity Notes	Please note that this antibody is reactive to Mouse and derived from the same host, Mouse. Mouse-On-Mouse blocking reagent may be needed for IHC and ICC experiments to reduce high background signal. You can find these reagents under catalog numbers PK-2200-NB and MP-2400-NB. Please contact Technical Support if you have any questions.
Immunogen	Full length human recombinant protein of human IGF2BP2 (NP_006333) produced in HEK293T cell.

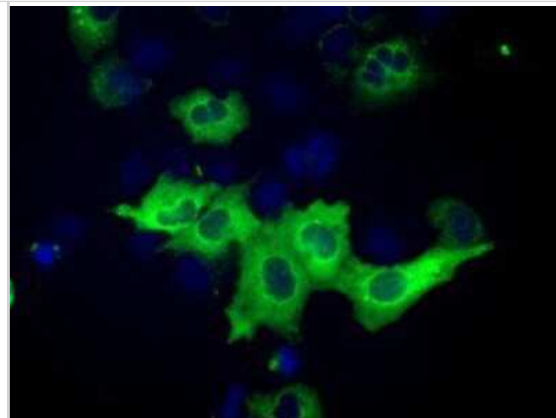
Product Application Details	
Applications	Western Blot, Flow Cytometry, Immunocytochemistry/ Immunofluorescence, Immunohistochemistry, Immunohistochemistry-Paraffin
Recommended Dilutions	Western Blot 1:1000-2000, Flow Cytometry 1:100, Immunohistochemistry 1:50, Immunocytochemistry/ Immunofluorescence 1:100, Immunohistochemistry-Paraffin 1:50

**Images**

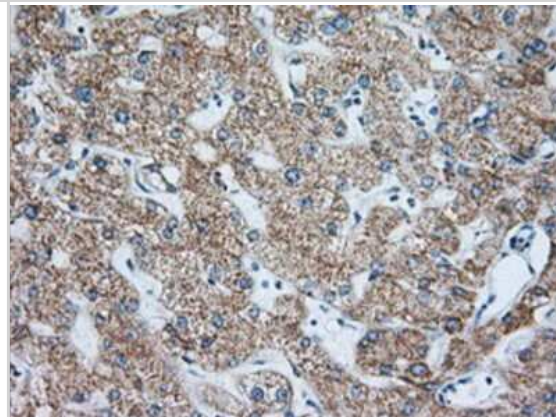
Western Blot: IGF2BP2 Antibody (3F9) [NBP2-02627] Analysis of extracts (35ug) from 9 different cell lines by using anti-IGF2BP2 monoclonal antibody.



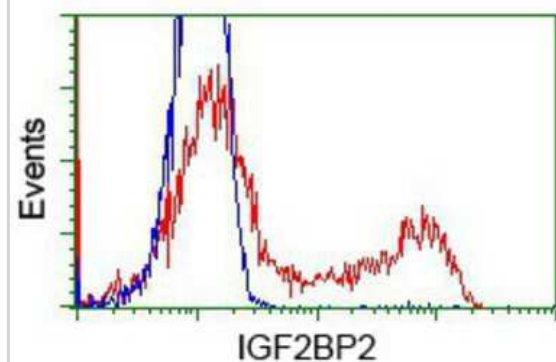
Immunocytochemistry/Immunofluorescence: IGF2BP2 Antibody (3F9) [NBP2-02627] - Staining of COS7 cells transiently transfected by pCMV6-ENTRY IGF2BP2.



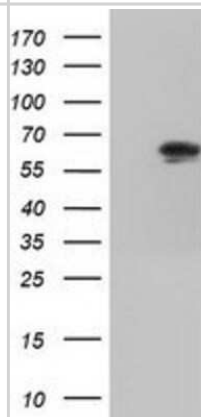
Immunohistochemistry-Paraffin: IGF2BP2 Antibody (3F9) [NBP2-02627] - Staining of paraffin-embedded Human liver tissue using anti-IGF2BP2 mouse monoclonal antibody.



Flow Cytometry: IGF2BP2 Antibody (3F9) [NBP2-02627] - HEK293T cells transfected with either overexpression plasmid (Red) or empty vector control plasmid (Blue) were immunostained by anti-IGF2BP2 antibody, and then analyzed by flow cytometry.



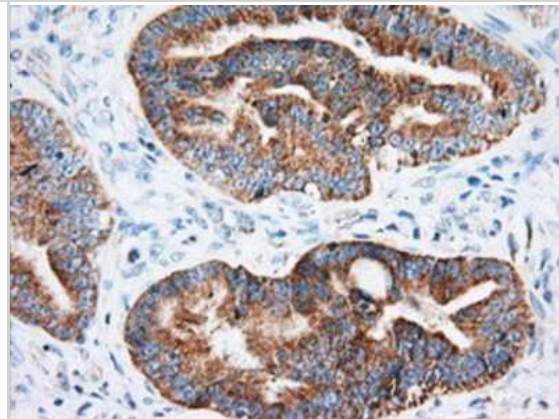
Western Blot: IGF2BP2 Antibody (3F9) [NBP2-02627] - HEK293T cells were transfected with the pCMV6-ENTRY control (Left lane) or pCMV6-ENTRY IGF2BP2 (Right lane) cDNA for 48 hrs and lysed. Equivalent amounts of cell lysates (5 ug per lane) were separated by SDS-PAGE and immunoblotted with anti-IGF2BP2.



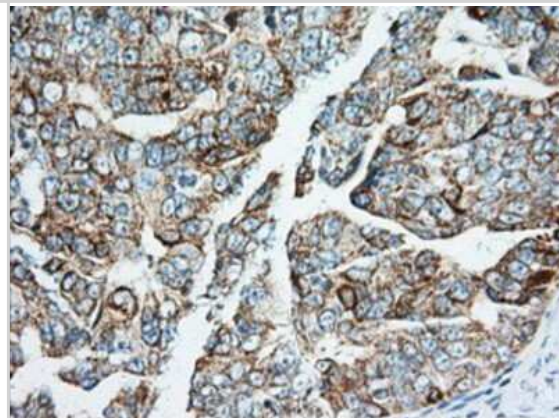
Immunohistochemistry-Paraffin: IGF2BP2 Antibody (3F9) [NBP2-02627]  
- Staining of paraffin-embedded Adenocarcinoma of Human breast tissue using anti-IGF2BP2 mouse monoclonal antibody.



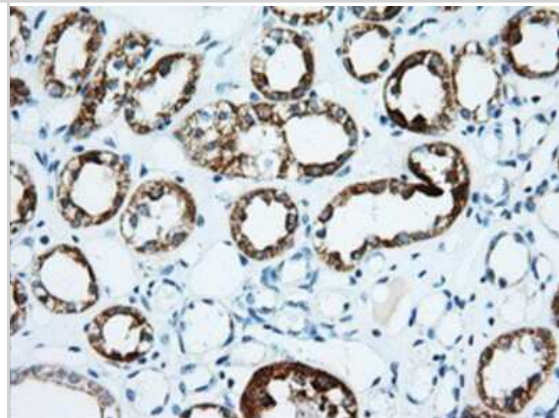
Immunohistochemistry-Paraffin: IGF2BP2 Antibody (3F9) [NBP2-02627]  
- Staining of paraffin-embedded Adenocarcinoma of Human colon tissue using anti-IGF2BP2 mouse monoclonal antibody.



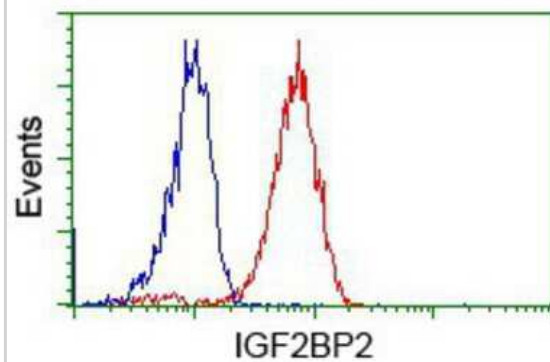
Immunohistochemistry-Paraffin: IGF2BP2 Antibody (3F9) [NBP2-02627]  
- Staining of paraffin-embedded Adenocarcinoma of Human ovary tissue using anti-IGF2BP2 mouse monoclonal antibody.



Immunohistochemistry-Paraffin: IGF2BP2 Antibody (3F9) [NBP2-02627]  
- Staining of paraffin-embedded Human Kidney tissue using anti-IGF2BP2 mouse monoclonal antibody.



Flow Cytometry: IGF2BP2 Antibody (3F9) [NBP2-02627] - Analysis of Jurkat cells, using anti-IGF2BP2 antibody, (Red), compared to a nonspecific negative control antibody (Blue).





### **Novus Biologicals USA**

10730 E. Briarwood Avenue  
Centennial, CO 80112  
USA  
Phone: 303.730.1950  
Toll Free: 1.888.506.6887  
Fax: 303.730.1966  
nb-customerservice@bio-techne.com

### **Bio-Techne Canada**

21 Canmotor Ave  
Toronto, ON M8Z 4E6  
Canada  
Phone: 905.827.6400  
Toll Free: 855.668.8722  
Fax: 905.827.6402  
canada.inquires@bio-techne.com

### **Bio-Techne Ltd**

19 Barton Lane  
Abingdon Science Park  
Abingdon, OX14 3NB, United Kingdom  
Phone: (44) (0) 1235 529449  
Free Phone: 0800 37 34 15  
Fax: (44) (0) 1235 533420  
info.EMEA@bio-techne.com

### **General Contact Information**

www.novusbio.com  
Technical Support: nb-technical@bio-techne.com  
Orders: nb-customerservice@bio-techne.com  
General: novus@novusbio.com

### **Products Related to NBP2-02627**

---

HAF007	Goat anti-Mouse IgG Secondary Antibody [HRP]
NB720-B	Rabbit anti-Mouse IgG (H+L) Secondary Antibody [Biotin]
NBP1-97005-0.5mg	Mouse IgG1 Isotype Control (MG1)
H00010644-Q01-10ug	Recombinant Human IMP2/IGF2BP2 GST (N-Term) Protein

---

### **Limitations**

This product is for research use only and is not approved for use in humans or in clinical diagnosis. Primary Antibodies are guaranteed for 1 year from date of receipt.

For more information on our 100% guarantee, please visit [www.novusbio.com/guarantee](http://www.novusbio.com/guarantee)

Earn gift cards/discounts by submitting a review: [www.novusbio.com/reviews/submit/NBP2-02627](http://www.novusbio.com/reviews/submit/NBP2-02627)

Earn gift cards/discounts by submitting a publication using this product:  
[www.novusbio.com/publications](http://www.novusbio.com/publications)

