

# Product Datasheet

## Endothelial Lipase Antibody (OTI1D9) NBP2-02396

Unit Size: 0.1 ml

Store at -20C. Avoid freeze-thaw cycles.

[www.novusbio.com](http://www.novusbio.com)



[technical@novusbio.com](mailto:technical@novusbio.com)

### Publications: 1

Protocols, Publications, Related Products, Reviews, Research Tools and Images at:  
[www.novusbio.com/NBP2-02396](http://www.novusbio.com/NBP2-02396)

Updated 10/23/2024 v.20.1

Earn rewards for product  
reviews and publications.

Submit a publication at [www.novusbio.com/publications](http://www.novusbio.com/publications)

Submit a review at [www.novusbio.com/reviews/destination/NBP2-02396](http://www.novusbio.com/reviews/destination/NBP2-02396)



**NBP2-02396**

Endothelial Lipase Antibody (OT11D9)

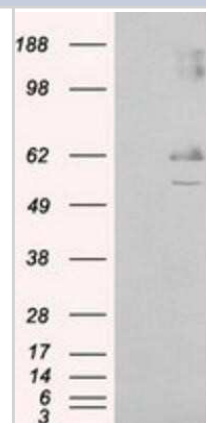
Product Information	
Unit Size	0.1 ml
Concentration	0.95 mg/ml
Storage	Store at -20C. Avoid freeze-thaw cycles.
Clonality	Monoclonal
Clone	OT11D9
Preservative	0.02% Sodium Azide
Isotype	IgG2b
Purity	Immunogen affinity purified
Buffer	PBS (pH 7.3), 1.0% BSA and 50% Glycerol
Target Molecular Weight	54.6 kDa

Product Description	
Host	Mouse
Gene ID	9388
Gene Symbol	LIPG
Species	Human
Immunogen	Full length human recombinant protein of human LIPG (NP_006024) produced in HEK293T cell.

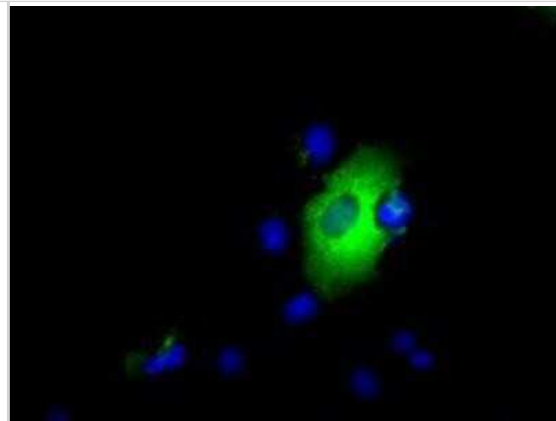
Product Application Details	
Applications	Western Blot, Flow Cytometry, Immunocytochemistry/ Immunofluorescence, Immunohistochemistry, Immunohistochemistry-Paraffin, Immunoprecipitation
Recommended Dilutions	Western Blot 1:2000, Flow Cytometry 1:100, Immunohistochemistry 1:50, Immunocytochemistry/ Immunofluorescence 1:100, Immunoprecipitation 2ug/500ul, Immunohistochemistry-Paraffin 1:50

**Images**

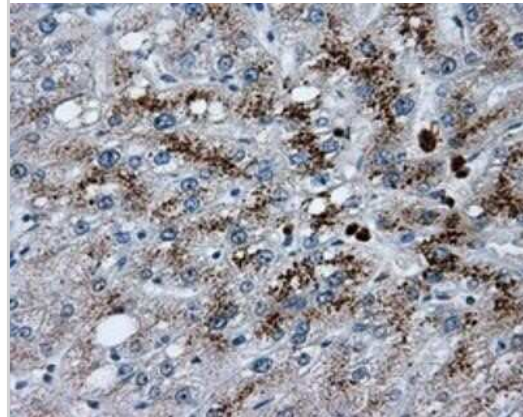
Western Blot: Endothelial Lipase Antibody (OT11D9) [NBP2-02396] - HEK293T cells were transfected with the pCMV6-ENTRY control (Left lane) or pCMV6-ENTRY Endothelial Lipase (Right lane) cDNA for 48 hrs and lysed. Equivalent amounts of cell lysates (5 ug per lane) were separated by SDS-PAGE and immunoblotted with anti-Endothelial Lipase.



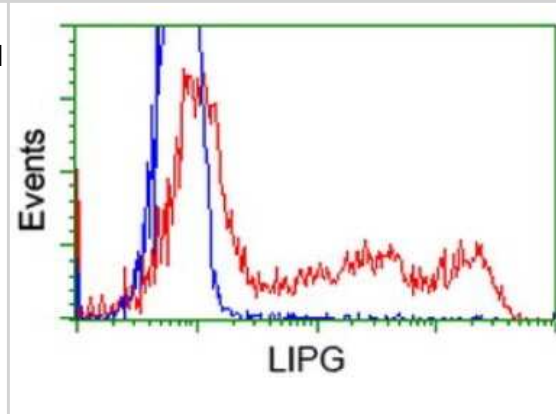
Immunocytochemistry/Immunofluorescence: Endothelial Lipase Antibody (OT11D9) [NBP2-02396] - Staining of COS7 cells transiently transfected by pCMV6-ENTRY Endothelial Lipase.



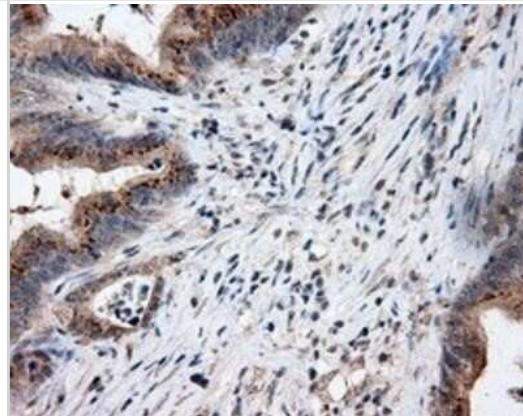
Immunohistochemistry-Paraffin: Endothelial Lipase Antibody (OT11D9) [NBP2-02396] - Staining of paraffin-embedded Human liver tissue using anti-Endothelial Lipase mouse monoclonal antibody.



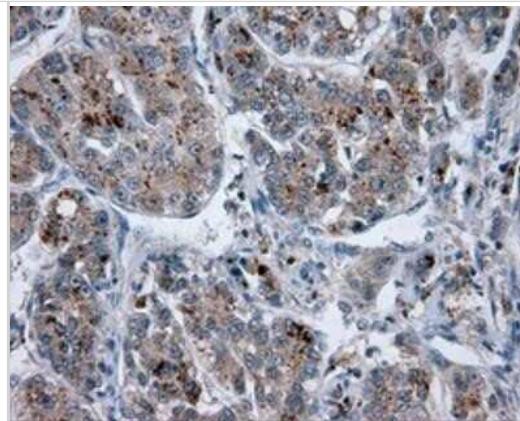
Flow Cytometry: Endothelial Lipase Antibody (OT11D9) [NBP2-02396] - HEK293T cells transfected with either Endothelial Lipase Human Tagged ORF Clone overexpress plasmid (Red) or empty vector control plasmid (Blue) were immunostained by anti-LIPG antibody, and then analyzed by flow cytometry.



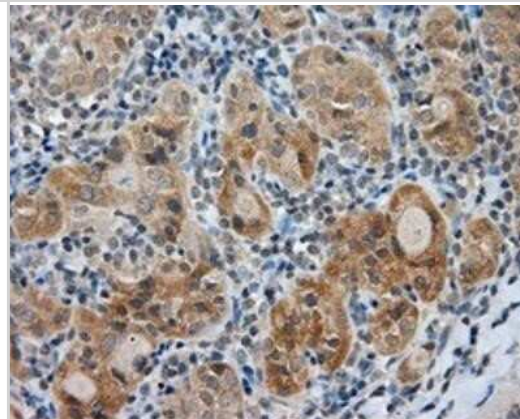
Immunohistochemistry-Paraffin: Endothelial Lipase Antibody (OT11D9) [NBP2-02396] - Staining of paraffin-embedded Adenocarcinoma of Human colon tissue using anti-Endothelial Lipase mouse monoclonal antibody.



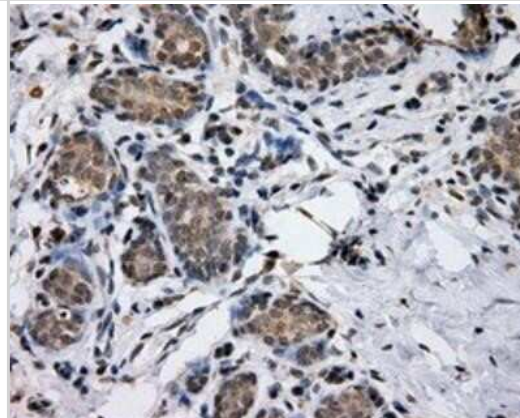
Immunohistochemistry-Paraffin: Endothelial Lipase Antibody (OTI1D9) [NBP2-02396] - Staining of paraffin-embedded Carcinoma of Human liver tissue using anti-Endothelial Lipase mouse monoclonal antibody.



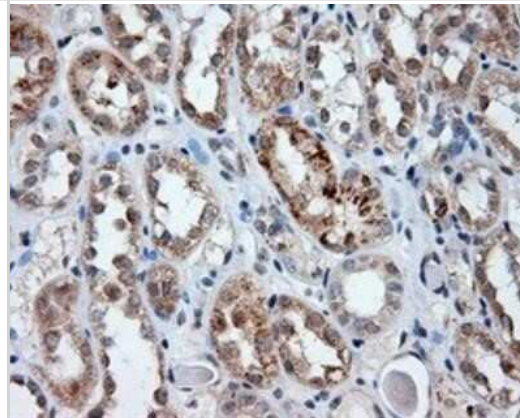
Immunohistochemistry-Paraffin: Endothelial Lipase Antibody (OTI1D9) [NBP2-02396] - Staining of paraffin-embedded Carcinoma of Human thyroid tissue using anti-Endothelial Lipase mouse monoclonal antibody.



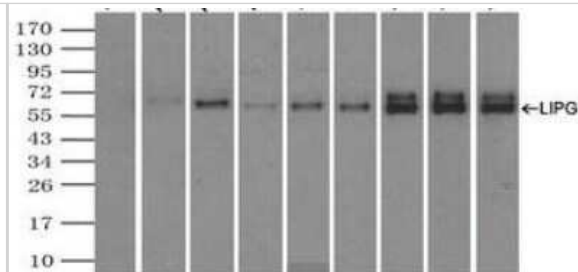
Immunohistochemistry-Paraffin: Endothelial Lipase Antibody (OTI1D9) [NBP2-02396] - Staining of paraffin-embedded Human breast tissue using anti-Endothelial Lipase mouse monoclonal antibody.



Immunohistochemistry-Paraffin: Endothelial Lipase Antibody (OTI1D9) [NBP2-02396] - Staining of paraffin-embedded Human Kidney tissue using anti-Endothelial Lipase mouse monoclonal antibody.



Immunoprecipitation: Endothelial Lipase Antibody (OT11D9) [NBP2-02396] - Lane 1: Negative Control Lane 2: NBP2-02378 Lane 3: NBP2-02380 Lane 4: NBP2-02381 Lane 5: NBP2-02382 Lane 6: NBP2-02394 Lane 7: NBP2-02395 Lane 8: NBP2-02396 Lane 9: NBP2-02397



## Publications

Menegaut L, Masson D, Abello N et al. Specific enrichment of 2-arachidonoyl-lysophosphatidylcholine in carotid atheroma plaque from type 2 diabetic patients. *Atherosclerosis* 2016-08-01 [PMID: 27189320]



### **Novus Biologicals USA**

10730 E. Briarwood Avenue  
Centennial, CO 80112  
USA  
Phone: 303.730.1950  
Toll Free: 1.888.506.6887  
Fax: 303.730.1966  
nb-customerservice@bio-techne.com

### **Bio-Techne Canada**

21 Canmotor Ave  
Toronto, ON M8Z 4E6  
Canada  
Phone: 905.827.6400  
Toll Free: 855.668.8722  
Fax: 905.827.6402  
canada.inquires@bio-techne.com

### **Bio-Techne Ltd**

19 Barton Lane  
Abingdon Science Park  
Abingdon, OX14 3NB, United Kingdom  
Phone: (44) (0) 1235 529449  
Free Phone: 0800 37 34 15  
Fax: (44) (0) 1235 533420  
info.EMEA@bio-techne.com

### **General Contact Information**

www.novusbio.com  
Technical Support: nb-technical@bio-techne.com  
Orders: nb-customerservice@bio-techne.com  
General: novus@novusbio.com

### **Products Related to NBP2-02396**

---

HAF007	Goat anti-Mouse IgG Secondary Antibody [HRP]
NB720-B	Rabbit anti-Mouse IgG (H+L) Secondary Antibody [Biotin]
NBP2-27231	Mouse IgG2b Isotype Control (MPC-11)
NB400-118PEP	Endothelial Lipase Antibody Blocking Peptide

---

### **Limitations**

This product is for research use only and is not approved for use in humans or in clinical diagnosis. Primary Antibodies are guaranteed for 1 year from date of receipt.

For more information on our 100% guarantee, please visit [www.novusbio.com/guarantee](http://www.novusbio.com/guarantee)

Earn gift cards/discounts by submitting a review: [www.novusbio.com/reviews/submit/NBP2-02396](http://www.novusbio.com/reviews/submit/NBP2-02396)

Earn gift cards/discounts by submitting a publication using this product:  
[www.novusbio.com/publications](http://www.novusbio.com/publications)

