

Product Datasheet

ATPB Antibody (OTI4E5) NBP2-02249

Unit Size: 0.1 ml

Store at -20C. Avoid freeze-thaw cycles.

www.novusbio.com



technical@novusbio.com

Protocols, Publications, Related Products, Reviews, Research Tools and Images at:
www.novusbio.com/NBP2-02249

Updated 9/9/2025 v.20.1

Earn rewards for product
reviews and publications.

Submit a publication at www.novusbio.com/publications

Submit a review at www.novusbio.com/reviews/destination/NBP2-02249



NBP2-02249

ATPB Antibody (OTI4E5)

Product Information

Unit Size	0.1 ml
Concentration	0.9 mg/ml
Storage	Store at -20C. Avoid freeze-thaw cycles.
Clonality	Monoclonal
Clone	OTI4E5
Preservative	0.02% Sodium Azide
Isotype	IgG2a
Purity	Immunogen affinity purified
Buffer	PBS (pH 7.3), 1.0% BSA and 50% Glycerol
Target Molecular Weight	56.6 kDa

Product Description

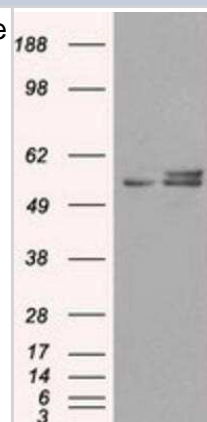
Description	Novus Biologicals Mouse ATPB Antibody (OTI4E5) (NBP2-02249) is a monoclonal antibody validated for use in IHC, WB, Flow and ICC/IF. All Novus Biologicals antibodies are covered by our 100% guarantee.
Host	Mouse
Gene ID	506
Gene Symbol	ATP5F1B
Species	Human, Rat, Canine, Primate, Monkey
Immunogen	Full length human recombinant protein of human ATP5B (NP_001677) produced in HEK293T cell.

Product Application Details

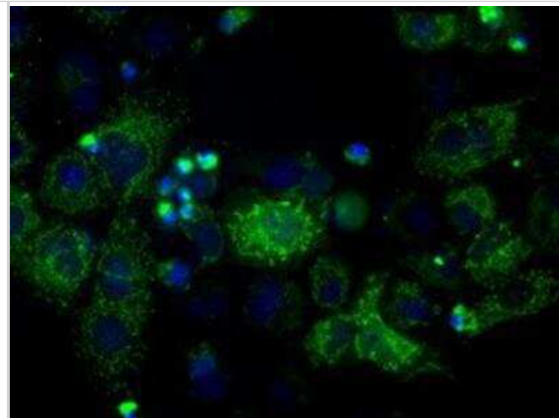
Applications	Western Blot, Immunohistochemistry-Paraffin, Flow Cytometry, Immunocytochemistry/ Immunofluorescence, Immunohistochemistry
Recommended Dilutions	Western Blot 1:1000, Flow Cytometry 1:100, Immunohistochemistry 1:10-1:500, Immunocytochemistry/ Immunofluorescence 1:100, Immunohistochemistry-Paraffin 1:50

Images

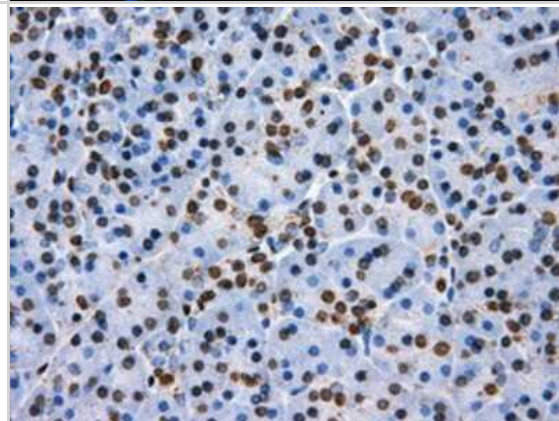
Western Blot: ATPB Antibody (4E5) [NBP2-02249] - HEK293T cells were transfected with the pCMV6-ENTRY control (Left lane) or pCMV6-ENTRY ATPB (Right lane) cDNA for 48 hrs and lysed. Equivalent amounts of cell lysates (5 ug per lane) were separated by SDS-PAGE and immunoblotted with anti-ATPB.



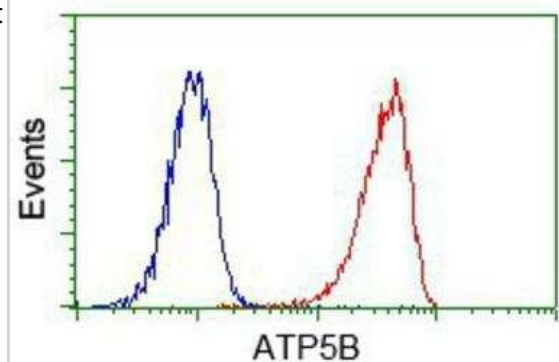
Immunocytochemistry/Immunofluorescence: ATPB Antibody (4E5) [NBP2-02249] - Staining of COS7 cells transiently transfected by pCMV6-ENTRY ATPB.



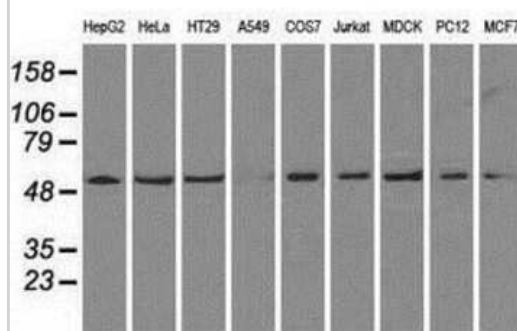
Immunohistochemistry-Paraffin: ATPB Antibody (4E5) [NBP2-02249] - Staining of paraffin-embedded pancreas tissue using anti-ATPB mouse monoclonal antibody.



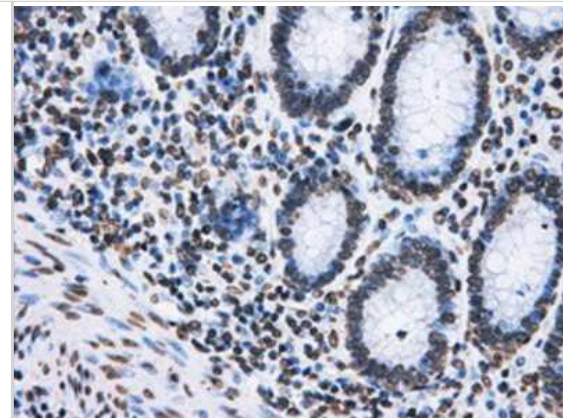
Flow Cytometry: ATPB Antibody (4E5) [NBP2-02249] - Analysis of Jurkat cells, using anti-ATPB antibody, (Red) compared to a nonspecific negative control antibody (Blue).



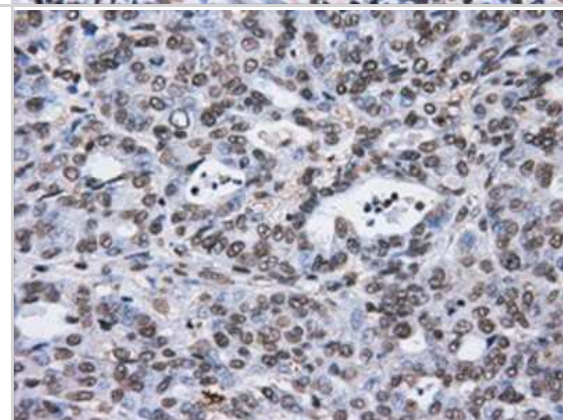
Western Blot: ATPB Antibody (4E5) [NBP2-02249] Analysis of extracts (35ug) from 9 different cell lines by using anti-ATPB monoclonal antibody.



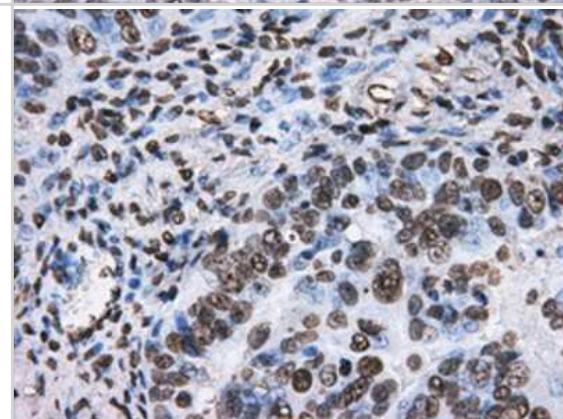
Immunohistochemistry-Paraffin: ATPB Antibody (4E5) [NBP2-02249] - Staining of paraffin-embedded Adenocarcinoma of colon tissue using anti-ATPB mouse monoclonal antibody.



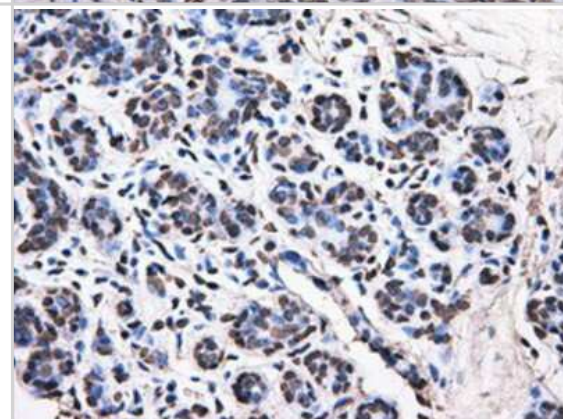
Immunohistochemistry-Paraffin: ATPB Antibody (4E5) [NBP2-02249] - Staining of paraffin-embedded Adenocarcinoma of endometrium tissue using anti-ATPB mouse monoclonal antibody.



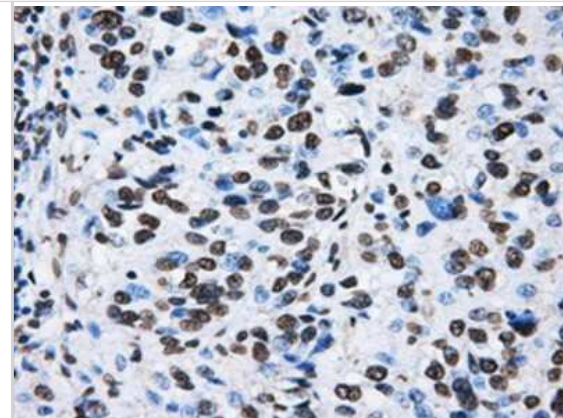
Immunohistochemistry-Paraffin: ATPB Antibody (4E5) [NBP2-02249] - Staining of paraffin-embedded Adenocarcinoma of ovary tissue using anti-ATPB mouse monoclonal antibody.



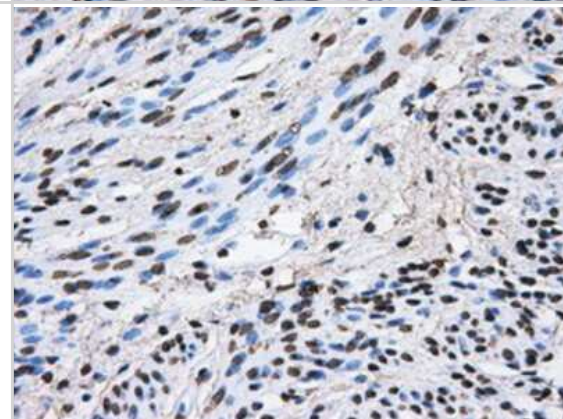
Immunohistochemistry-Paraffin: ATPB Antibody (4E5) [NBP2-02249] - Staining of paraffin-embedded breast tissue using anti-ATPB mouse monoclonal antibody.



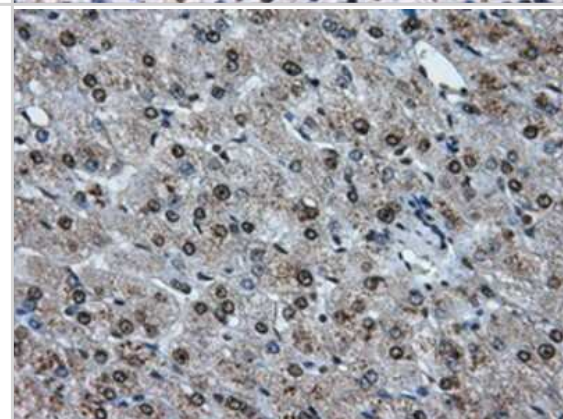
Immunohistochemistry-Paraffin: ATPB Antibody (4E5) [NBP2-02249] - Staining of paraffin-embedded Carcinoma of bladder tissue using anti-ATPB mouse monoclonal antibody.



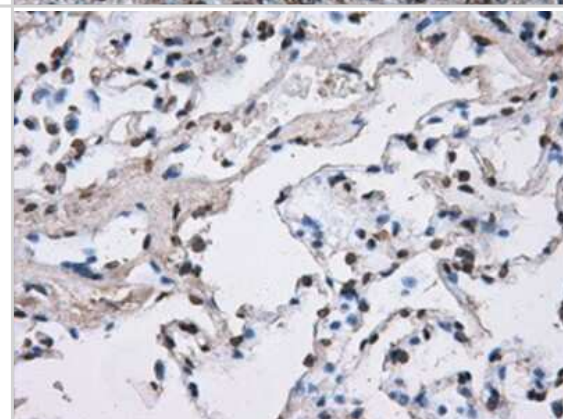
Immunohistochemistry-Paraffin: ATPB Antibody (4E5) [NBP2-02249] - Staining of paraffin-embedded endometrium tissue using anti-ATPB mouse monoclonal antibody.



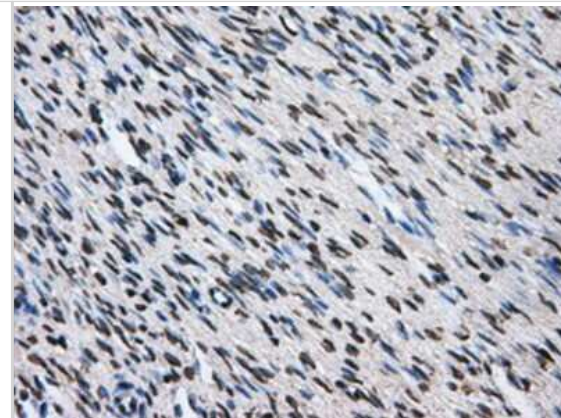
Immunohistochemistry-Paraffin: ATPB Antibody (4E5) [NBP2-02249] - Staining of paraffin-embedded liver tissue using anti-ATPB mouse monoclonal antibody.



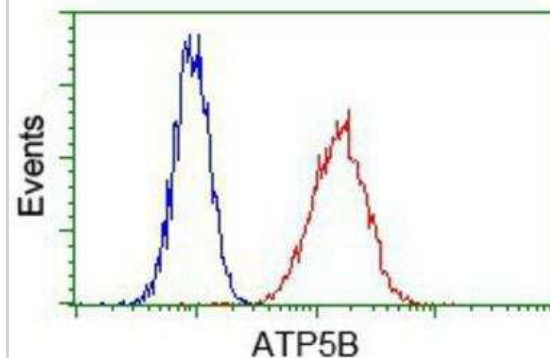
Immunohistochemistry-Paraffin: ATPB Antibody (4E5) [NBP2-02249] - Staining of paraffin-embedded lung tissue using anti-ATPB mouse monoclonal antibody.



Immunohistochemistry-Paraffin: ATPB Antibody (4E5) [NBP2-02249] - Staining of paraffin-embedded Ovary tissue using anti-ATPB mouse monoclonal antibody.



Flow Cytometry: ATPB Antibody (4E5) [NBP2-02249] - Analysis of Hela cells, using anti-ATPB antibody, (Red) compared to a nonspecific negative control antibody (Blue).





Novus Biologicals USA

10730 E. Briarwood Avenue
Centennial, CO 80112
USA
Phone: 303.730.1950
Toll Free: 1.888.506.6887
Fax: 303.730.1966
nb-customerservice@bio-techne.com

Bio-Techne Canada

21 Canmotor Ave
Toronto, ON M8Z 4E6
Canada
Phone: 905.827.6400
Toll Free: 855.668.8722
Fax: 905.827.6402
canada.inquires@bio-techne.com

Bio-Techne Ltd

19 Barton Lane
Abingdon Science Park
Abingdon, OX14 3NB, United Kingdom
Phone: (44) (0) 1235 529449
Free Phone: 0800 37 34 15
Fax: (44) (0) 1235 533420
info.EMEA@bio-techne.com

General Contact Information

www.novusbio.com
Technical Support: nb-technical@bio-techne.com
Orders: nb-customerservice@bio-techne.com
General: novus@novusbio.com

Products Related to NBP2-02249

HAF007	Goat anti-Mouse IgG Secondary Antibody [HRP]
NB720-B	Rabbit anti-Mouse IgG (H+L) Secondary Antibody [Biotin]
NBP1-96778	Mouse IgG2a Isotype Control (M2A)
H00000506-P01-10ug	Recombinant Human ATPB GST (N-Term) Protein

Limitations

This product is for research use only and is not approved for use in humans or in clinical diagnosis. Primary Antibodies are guaranteed for 1 year from date of receipt.

For more information on our 100% guarantee, please visit www.novusbio.com/guarantee

Earn gift cards/discounts by submitting a review: www.novusbio.com/reviews/submit/NBP2-02249

Earn gift cards/discounts by submitting a publication using this product:
www.novusbio.com/publications

