

Product Datasheet

GBE1 Antibody (OTI1D11)

NBP2-02245

Unit Size: 0.1 ml

Store at -20C. Avoid freeze-thaw cycles.

www.novusbio.com



technical@novusbio.com

Protocols, Publications, Related Products, Reviews, Research Tools and Images at:
www.novusbio.com/NBP2-02245

Updated 9/9/2025 v.20.1

Earn rewards for product
reviews and publications.

Submit a publication at www.novusbio.com/publications

Submit a review at www.novusbio.com/reviews/destination/NBP2-02245



NBP2-02245

GBE1 Antibody (OTI1D11)

| Product Information | |
|--------------------------------|--|
| Unit Size | 0.1 ml |
| Concentration | 1.1 mg/ml |
| Storage | Store at -20C. Avoid freeze-thaw cycles. |
| Clonality | Monoclonal |
| Clone | OTI1D11 |
| Preservative | 0.02% Sodium Azide |
| Isotype | IgG1 |
| Purity | Immunogen affinity purified |
| Buffer | PBS (pH 7.3), 1.0% BSA and 50% Glycerol |
| Target Molecular Weight | 80.3 kDa |

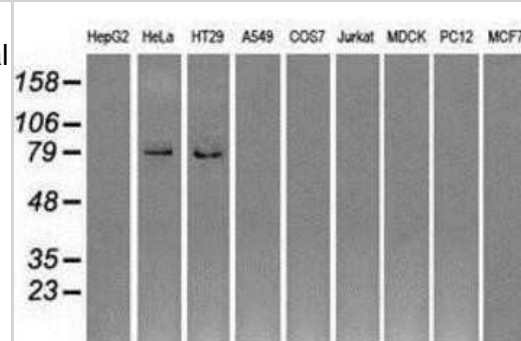
| Product Description | |
|----------------------------|---|
| Description | Novus Biologicals Mouse GBE1 Antibody (OTI1D11) (NBP2-02245) is a monoclonal antibody validated for use in IHC, WB, Flow, ICC/IF and IP. All Novus Biologicals antibodies are covered by our 100% guarantee. |
| Host | Mouse |
| Gene ID | 2632 |
| Gene Symbol | GBE1 |
| Species | Human, Mouse, Rat |
| Reactivity Notes | Please note that this antibody is reactive to Mouse and derived from the same host, Mouse. Mouse-On-Mouse blocking reagent may be needed for IHC and ICC experiments to reduce high background signal. You can find these reagents under catalog numbers PK-2200-NB and MP-2400-NB. Please contact Technical Support if you have any questions. |
| Immunogen | Full length human recombinant protein of human GBE1 (NP_000149) produced in HEK293T cell. |

| Product Application Details | |
|------------------------------------|---|
| Applications | Western Blot, Immunohistochemistry-Paraffin, Flow Cytometry, Immunocytochemistry/ Immunofluorescence, Immunohistochemistry, Immunoprecipitation |
| Recommended Dilutions | Western Blot 1:500-2000, Flow Cytometry 1:100, Immunohistochemistry 1:50, Immunocytochemistry/ Immunofluorescence 1:50-100, Immunoprecipitation 2ug/500ul, Immunohistochemistry-Paraffin 1:50 |

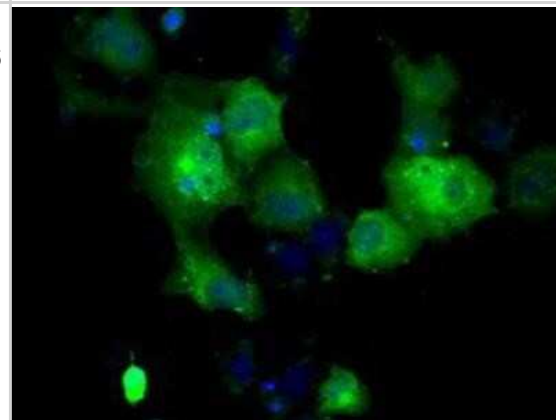


Images

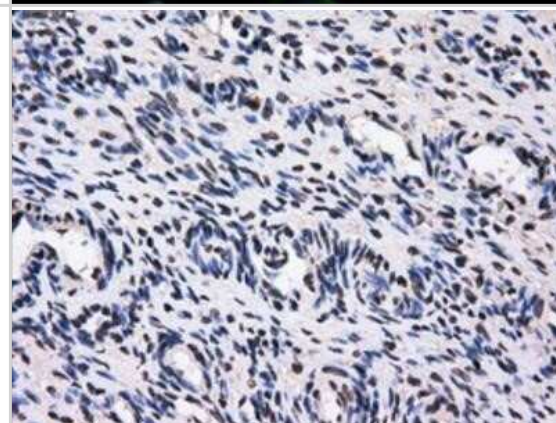
Western Blot: GBE1 Antibody (OTI1D11) [NBP2-02245] - Analysis of extracts (35ug) from 9 different cell lines by using anti-GBE1 monoclonal antibody (HepG2: human; HeLa: human; SVT2: mouse; A549: human; COS7: monkey; Jurkat: human; MDCK: canine; PC12: rat; MCF7: human).



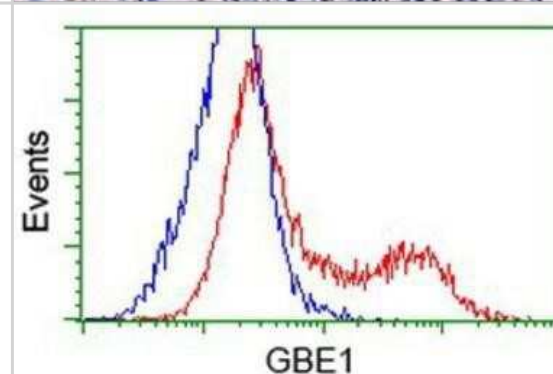
Immunocytochemistry/Immunofluorescence: GBE1 Antibody (OTI1D11) [NBP2-02245] - Staining of COS7 cells transiently transfected by pCMV6-ENTRY GBE1.



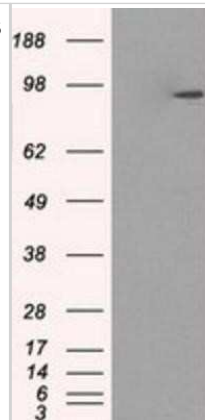
Immunohistochemistry-Paraffin: GBE1 Antibody (OTI1D11) [NBP2-02245] - Staining of paraffin-embedded Human Ovary tissue using anti-GBE1 mouse monoclonal antibody.



Flow Cytometry: GBE1 Antibody (OTI1D11) [NBP2-02245] - HEK293T cells transfected with either overexpression plasmid (Red) or empty vector control plasmid (Blue) were immunostained by anti-GBE1 antibody, and then analyzed by flow cytometry.



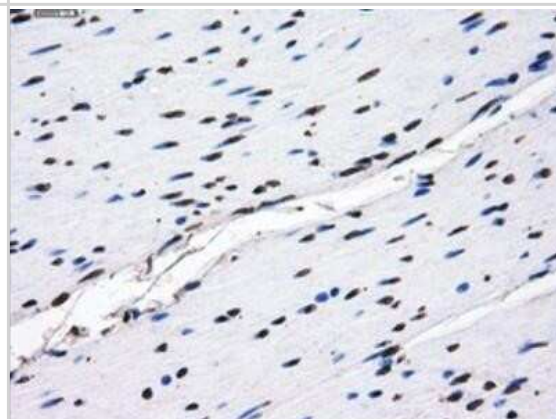
Western Blot: GBE1 Antibody (OTI1D11) [NBP2-02245] - HEK293T cells were transfected with the pCMV6-ENTRY control (Left lane) or pCMV6-ENTRY GBE1 (Right lane) cDNA for 48 hrs and lysed. Equivalent amounts of cell lysates (5 ug per lane) were separated by SDS-PAGE and immunoblotted with anti-GBE1.



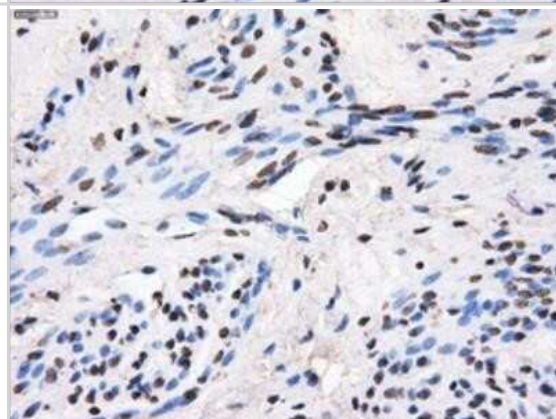
Immunocytochemistry/Immunofluorescence: GBE1 Antibody (OTI1D11) [NBP2-02245] - Immunofluorescent staining of HepG2 cells using anti-GBE1 mouse monoclonal antibody.



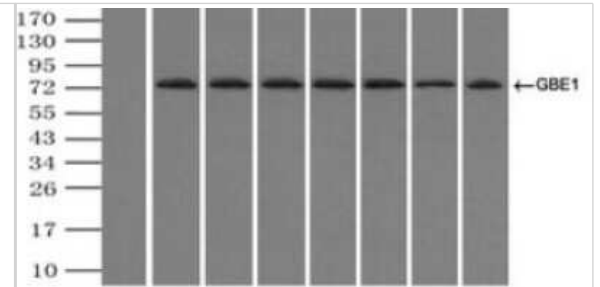
Immunohistochemistry-Paraffin: GBE1 Antibody (OTI1D11) [NBP2-02245] - Staining of paraffin-embedded Human colon tissue using anti-GBE1 mouse monoclonal antibody.



Immunohistochemistry-Paraffin: GBE1 Antibody (OTI1D11) [NBP2-02245] - Staining of paraffin-embedded Human endometrium tissue using anti-GBE1 mouse monoclonal antibody.



Immunoprecipitation: GBE1 Antibody (OT11D11) [NBP2-02245] - (Negative control: IP without adding anti-GBE1 antibody.). For each experiment, 500ul of DDK tagged GBE1 overexpression lysates (at 1:5 dilution with HEK293T lysate), 2ug of anti-GBE1 antibody and 20ul (0.1mg) of goat anti-mouse conjugated magnetic beads were mixed and incubated overnight. After extensive wash to remove any non-specific binding, the immuno-precipitated products were analyzed with rabbit anti-DDK polyclonal antibody.





Novus Biologicals USA

10730 E. Briarwood Avenue
Centennial, CO 80112
USA
Phone: 303.730.1950
Toll Free: 1.888.506.6887
Fax: 303.730.1966
nb-customerservice@bio-techne.com

Bio-Techne Canada

21 Canmotor Ave
Toronto, ON M8Z 4E6
Canada
Phone: 905.827.6400
Toll Free: 855.668.8722
Fax: 905.827.6402
canada.inquires@bio-techne.com

Bio-Techne Ltd

19 Barton Lane
Abingdon Science Park
Abingdon, OX14 3NB, United Kingdom
Phone: (44) (0) 1235 529449
Free Phone: 0800 37 34 15
Fax: (44) (0) 1235 533420
info.EMEA@bio-techne.com

General Contact Information

www.novusbio.com
Technical Support: nb-technical@bio-techne.com
Orders: nb-customerservice@bio-techne.com
General: novus@novusbio.com

Products Related to NBP2-02245

| | |
|------------------|--|
| NBP2-33376H | Blue Marker Antibody (6F4-F6) [HRP] |
| HAF007 | Goat anti-Mouse IgG Secondary Antibody [HRP] |
| NB7539 | Goat anti-Mouse IgG (H+L) Secondary Antibody [HRP] |
| NBP1-97005-0.5mg | Mouse IgG1 Isotype Control (MG1) |

Limitations

This product is for research use only and is not approved for use in humans or in clinical diagnosis. Primary Antibodies are guaranteed for 1 year from date of receipt.

For more information on our 100% guarantee, please visit www.novusbio.com/guarantee

Earn gift cards/discounts by submitting a review: www.novusbio.com/reviews/submit/NBP2-02245

Earn gift cards/discounts by submitting a publication using this product:
www.novusbio.com/publications

