

Product Datasheet

LEMD3 Antibody (OTI6C10)

NBP2-02211

Unit Size: 0.1 ml

Store at -20C. Avoid freeze-thaw cycles.

www.novusbio.com



technical@novusbio.com

Protocols, Publications, Related Products, Reviews, Research Tools and Images at:
www.novusbio.com/NBP2-02211

Updated 9/9/2025 v.20.1

Earn rewards for product
reviews and publications.

Submit a publication at www.novusbio.com/publications

Submit a review at www.novusbio.com/reviews/destination/NBP2-02211



NBP2-02211

LEMD3 Antibody (OTI6C10)

Product Information	
Unit Size	0.1 ml
Concentration	0.56 mg/ml
Storage	Store at -20C. Avoid freeze-thaw cycles.
Clonality	Monoclonal
Clone	OTI6C10
Preservative	0.02% Sodium Azide
Isotype	IgG1
Purity	Immunogen affinity purified
Buffer	PBS (pH 7.3), 1.0% BSA and 50% Glycerol
Target Molecular Weight	100 kDa

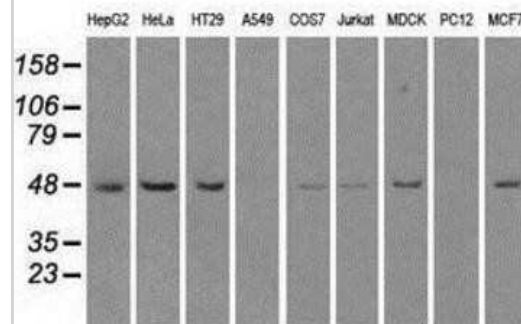
Product Description	
Description	Novus Biologicals Mouse LEMD3 Antibody (OTI6C10) (NBP2-02211) is a monoclonal antibody validated for use in IHC, WB, Flow, ICC/IF and IP. All Novus Biologicals antibodies are covered by our 100% guarantee.
Host	Mouse
Gene ID	23592
Gene Symbol	LEMD3
Species	Human, Mouse, Rat, Canine, Monkey
Reactivity Notes	Please note that this antibody is reactive to Mouse and derived from the same host, Mouse. Mouse-On-Mouse blocking reagent may be needed for IHC and ICC experiments to reduce high background signal. You can find these reagents under catalog numbers PK-2200-NB and MP-2400-NB. Please contact Technical Support if you have any questions.
Immunogen	Full length human recombinant protein of human LEMD3 (NP_055134) produced in HEK293T cell.

Product Application Details	
Applications	Western Blot, Immunohistochemistry-Paraffin, Flow Cytometry, Immunocytochemistry/ Immunofluorescence, Immunohistochemistry, Immunoprecipitation
Recommended Dilutions	Western Blot 1:1000, Flow Cytometry 1:100, Immunohistochemistry 1:50, Immunocytochemistry/ Immunofluorescence 1:100, Immunoprecipitation 2-4ug/mg, Immunohistochemistry-Paraffin 1:50

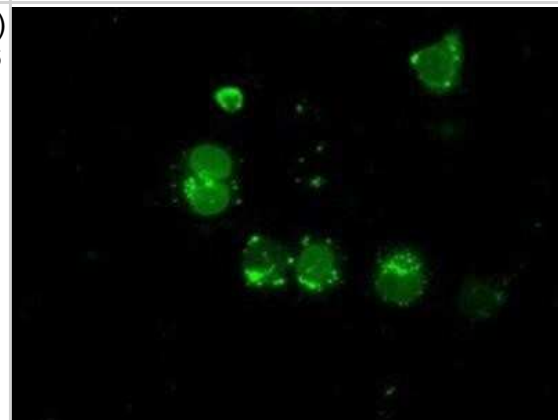


Images

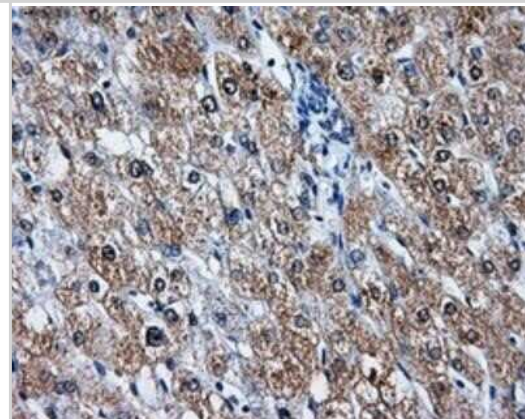
Western Blot: LEMD3 Antibody (OTI6C10) [NBP2-02211] - Analysis of extracts (35ug) from 9 different cell lines by using anti-LEMD3 monoclonal antibody.



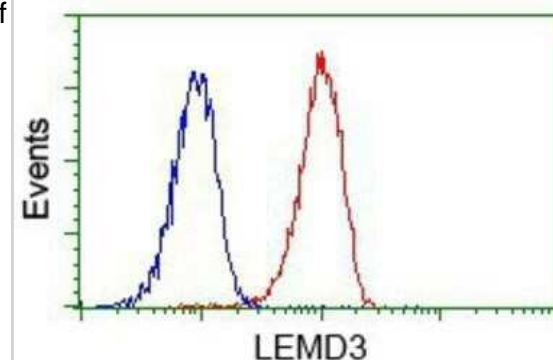
Immunocytochemistry/Immunofluorescence: LEMD3 Antibody (OTI6C10) [NBP2-02211] - Staining of COS7 cells transiently transfected by pCMV6-ENTRY LEMD3.



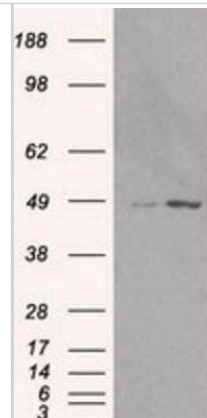
Immunohistochemistry-Paraffin: LEMD3 Antibody (OTI6C10) [NBP2-02211] - Staining of paraffin-embedded liver tissue using anti-LEMD3 mouse monoclonal antibody.



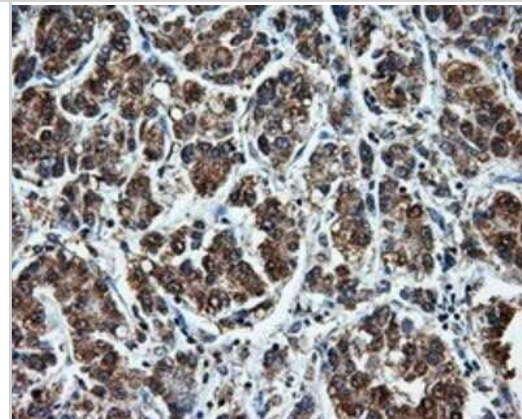
Flow Cytometry: LEMD3 Antibody (OTI6C10) [NBP2-02211] - Analysis of Jurkat cells, using anti-LEMD3 antibody, (Red) compared to a nonspecific negative control antibody (Blue).



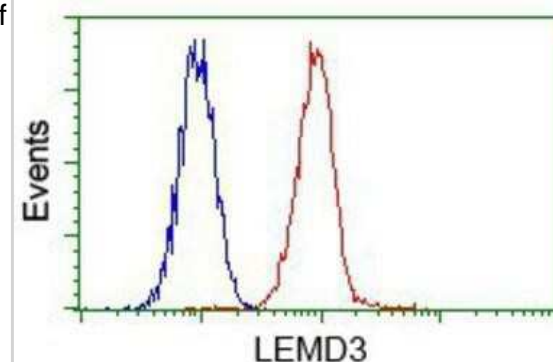
Western Blot: LEMD3 Antibody (OTI6C10) [NBP2-02211] - HEK293T cells were transfected with the pCMV6-ENTRY control (Left lane) or pCMV6-ENTRY LEMD3 (Right lane) cDNA for 48 hrs and lysed. Equivalent amounts of cell lysates (5 ug per lane) were separated by SDS-PAGE and immunoblotted with anti-LEMED3.



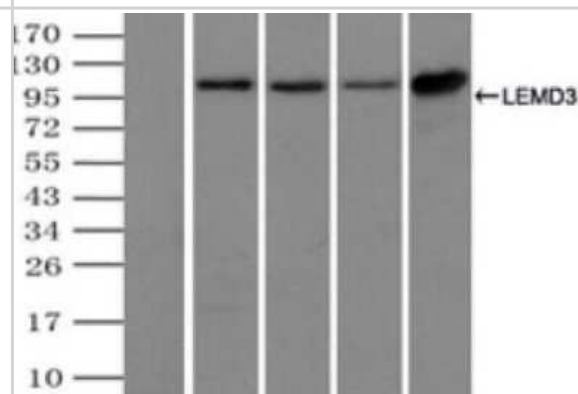
Immunohistochemistry-Paraffin: LEMD3 Antibody (OTI6C10) [NBP2-02211] - Staining of paraffin-embedded Carcinoma of liver tissue using anti-LEMED3mouse monoclonal antibody.



Flow Cytometry: LEMD3 Antibody (OTI6C10) [NBP2-02211] - Analysis of Hela cells, using anti-LEMED3 antibody, (Red) compared to a nonspecific negative control antibody (Blue).



Immunoprecipitation: LEMD3 Antibody (OTI6C10) [NBP2-02211] - (Negative control: IP without adding anti-LEMED3 antibody). For each experiment, 500ul of DDK tagged LEMD3 overexpression lysates (at 1:5 dilution with HEK293T lysate), 2ug of anti-LEMED3 antibody and 20ul (0.1mg) of goat anti-mouse conjugated magnetic beads were mixed and incubated overnight. After extensive wash to remove any non-specific binding, the immuno-precipitated products were analyzed with rabbit anti-DDK polyclonal antibody.





Novus Biologicals USA

10730 E. Briarwood Avenue
Centennial, CO 80112
USA
Phone: 303.730.1950
Toll Free: 1.888.506.6887
Fax: 303.730.1966
nb-customerservice@bio-techne.com

Bio-Techne Canada

21 Canmotor Ave
Toronto, ON M8Z 4E6
Canada
Phone: 905.827.6400
Toll Free: 855.668.8722
Fax: 905.827.6402
canada.inquires@bio-techne.com

Bio-Techne Ltd

19 Barton Lane
Abingdon Science Park
Abingdon, OX14 3NB, United Kingdom
Phone: (44) (0) 1235 529449
Free Phone: 0800 37 34 15
Fax: (44) (0) 1235 533420
info.EMEA@bio-techne.com

General Contact Information

www.novusbio.com
Technical Support: nb-technical@bio-techne.com
Orders: nb-customerservice@bio-techne.com
General: novus@novusbio.com

Products Related to NBP2-02211

NBP2-33376H	Blue Marker Antibody (6F4-F6) [HRP]
HAF007	Goat anti-Mouse IgG Secondary Antibody [HRP]
NB7539	Goat anti-Mouse IgG (H+L) Secondary Antibody [HRP]
NBP1-97005-0.5mg	Mouse IgG1 Isotype Control (MG1)

Limitations

This product is for research use only and is not approved for use in humans or in clinical diagnosis. Primary Antibodies are guaranteed for 1 year from date of receipt.

For more information on our 100% guarantee, please visit www.novusbio.com/guarantee

Earn gift cards/discounts by submitting a review: www.novusbio.com/reviews/submit/NBP2-02211

Earn gift cards/discounts by submitting a publication using this product:
www.novusbio.com/publications

