

# Product Datasheet

## Prolactin Antibody (OTI6B1)

### NBP2-02142

Unit Size: 0.1 ml

Store at -20C. Avoid freeze-thaw cycles.

[www.novusbio.com](http://www.novusbio.com)



[technical@novusbio.com](mailto:technical@novusbio.com)

#### Publications: 1

Protocols, Publications, Related Products, Reviews, Research Tools and Images at:  
[www.novusbio.com/NBP2-02142](http://www.novusbio.com/NBP2-02142)

Updated 10/23/2024 v.20.1

Earn rewards for product  
reviews and publications.

Submit a publication at [www.novusbio.com/publications](http://www.novusbio.com/publications)

Submit a review at [www.novusbio.com/reviews/destination/NBP2-02142](http://www.novusbio.com/reviews/destination/NBP2-02142)



**NBP2-02142**

Prolactin Antibody (OTI6B1)

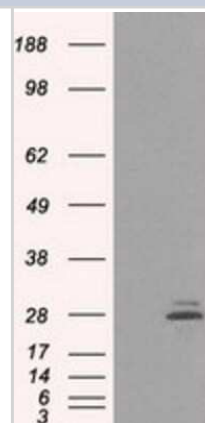
Product Information	
Unit Size	0.1 ml
Concentration	1 mg/ml
Storage	Store at -20C. Avoid freeze-thaw cycles.
Clonality	Monoclonal
Clone	OTI6B1
Preservative	0.02% Sodium Azide
Isotype	IgG2a
Purity	Immunogen affinity purified
Buffer	PBS (pH 7.3), 1.0% BSA and 50% Glycerol
Target Molecular Weight	25.7 kDa

Product Description	
Host	Mouse
Gene ID	5617
Gene Symbol	PRL
Species	Human
Immunogen	Full length human recombinant protein of human PRL (NP_000939) produced in HEK293T cell.

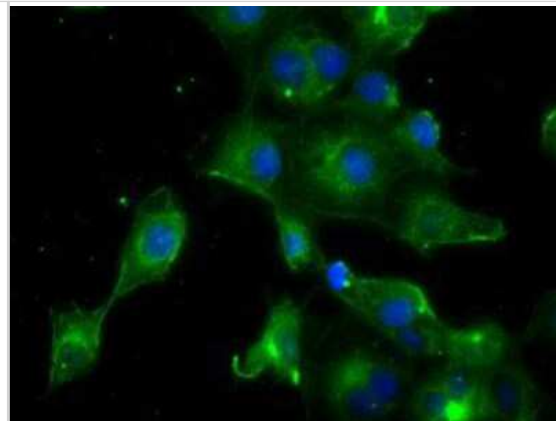
Product Application Details	
Applications	Western Blot, Flow Cytometry, Immunocytochemistry/ Immunofluorescence, Immunohistochemistry, Immunohistochemistry-Paraffin
Recommended Dilutions	Western Blot 1:1000, Flow Cytometry 1:100, Immunohistochemistry 1:50, Immunocytochemistry/ Immunofluorescence 1:50-100, Immunohistochemistry-Paraffin 1:50

**Images**

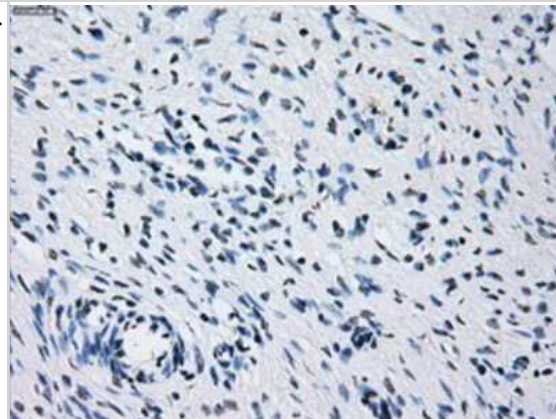
Western Blot: Prolactin Antibody (6B1) [NBP2-02142] - HEK293T cells were transfected with the pCMV6-ENTRY control (Left lane) or pCMV6-ENTRY Prolactin (Right lane) cDNA for 48 hrs and lysed. Equivalent amounts of cell lysates (5 ug per lane) were separated by SDS-PAGE and immunoblotted with anti-Prolactin.



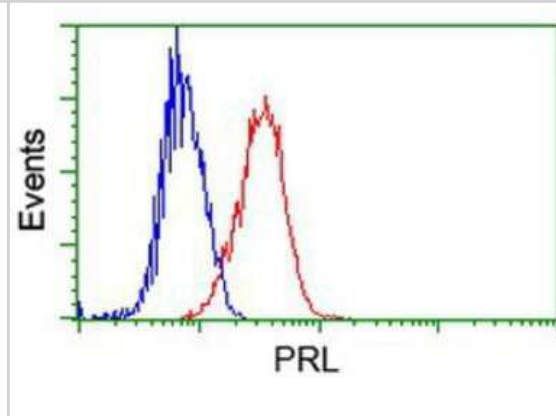
Immunocytochemistry/Immunofluorescence: Prolactin Antibody (6B1) [NBP2-02142] Staining of COS7 cells transiently transfected by pCMV6-ENTRY Prolactin.



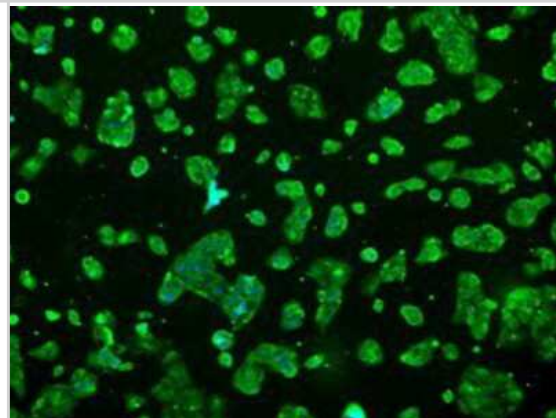
Immunohistochemistry-Paraffin: Prolactin Antibody (6B1) [NBP2-02142] - Staining of paraffin-embedded Human Ovary tissue using anti-Prolactin mouse monoclonal antibody.



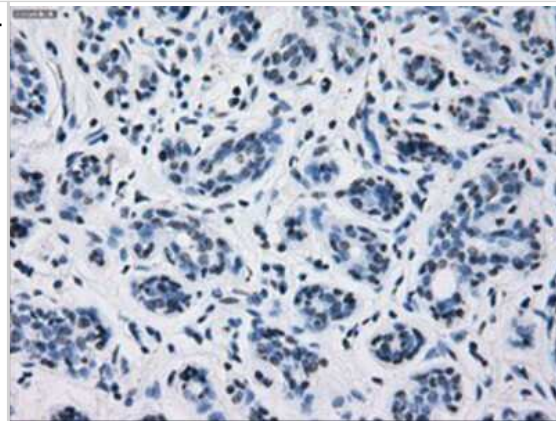
Flow Cytometry: Prolactin Antibody (6B1) [NBP2-02142] - Analysis of Jurkat cells, using anti-Prolactin antibody, (Red), compared to a nonspecific negative control antibody (Blue).



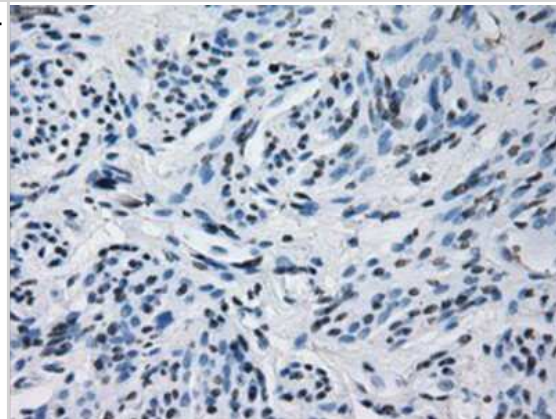
Immunocytochemistry/Immunofluorescence: Prolactin Antibody (6B1) [NBP2-02142] - Immunofluorescent staining of HepG2 cells using anti-Prolactin mouse monoclonal antibody.



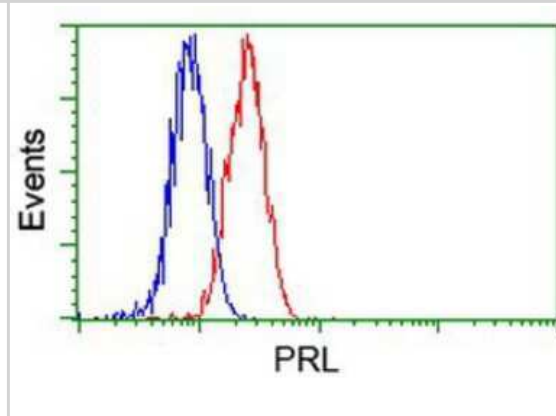
Immunohistochemistry-Paraffin: Prolactin Antibody (6B1) [NBP2-02142] - Staining of paraffin-embedded Human breast tissue using anti-Prolactin mouse monoclonal antibody.



Immunohistochemistry-Paraffin: Prolactin Antibody (6B1) [NBP2-02142] - Staining of paraffin-embedded Human endometrium tissue using anti-Prolactin mouse monoclonal antibody.



Flow Cytometry: Prolactin Antibody (6B1) [NBP2-02142] - Analysis of Hela cells, using anti-Prolactin antibody, (Red), compared to a nonspecific negative control antibody (Blue).



## Publications

Jingert K, Paulsen F, Jacobi C et al. Prolactin Inducible Protein, but Not Prolactin, Is Present in Human Tears, Is Involved in Tear Film Quality, and Influences Evaporative Dry Eye Disease *Frontiers in Medicine* 2022-06-30 [PMID: 35847789] (Immunohistochemistry, Immunohistochemistry-Paraffin)



### **Novus Biologicals USA**

10730 E. Briarwood Avenue  
Centennial, CO 80112  
USA  
Phone: 303.730.1950  
Toll Free: 1.888.506.6887  
Fax: 303.730.1966  
nb-customerservice@bio-techne.com

### **Bio-Techne Canada**

21 Canmotor Ave  
Toronto, ON M8Z 4E6  
Canada  
Phone: 905.827.6400  
Toll Free: 855.668.8722  
Fax: 905.827.6402  
canada.inquires@bio-techne.com

### **Bio-Techne Ltd**

19 Barton Lane  
Abingdon Science Park  
Abingdon, OX14 3NB, United Kingdom  
Phone: (44) (0) 1235 529449  
Free Phone: 0800 37 34 15  
Fax: (44) (0) 1235 533420  
info.EMEA@bio-techne.com

### **General Contact Information**

www.novusbio.com  
Technical Support: nb-technical@bio-techne.com  
Orders: nb-customerservice@bio-techne.com  
General: novus@novusbio.com

### **Products Related to NBP2-02142**

---

HAF007	Goat anti-Mouse IgG Secondary Antibody [HRP]
NB720-B	Rabbit anti-Mouse IgG (H+L) Secondary Antibody [Biotin]
NBP1-96778	Mouse IgG2a Isotype Control (M2A)
NBP2-35120-10ug	Recombinant Mouse Prolactin Protein

---

### **Limitations**

This product is for research use only and is not approved for use in humans or in clinical diagnosis. Primary Antibodies are guaranteed for 1 year from date of receipt.

For more information on our 100% guarantee, please visit [www.novusbio.com/guarantee](http://www.novusbio.com/guarantee)

Earn gift cards/discounts by submitting a review: [www.novusbio.com/reviews/submit/NBP2-02142](http://www.novusbio.com/reviews/submit/NBP2-02142)

Earn gift cards/discounts by submitting a publication using this product:  
[www.novusbio.com/publications](http://www.novusbio.com/publications)

