

# Product Datasheet

## IBRDC2 Antibody (OTI9H10)

### NBP2-02128

Unit Size: 0.1 ml

Store at -20C. Avoid freeze-thaw cycles.

[www.novusbio.com](http://www.novusbio.com)



[technical@novusbio.com](mailto:technical@novusbio.com)

Protocols, Publications, Related Products, Reviews, Research Tools and Images at:  
[www.novusbio.com/NBP2-02128](http://www.novusbio.com/NBP2-02128)

Updated 9/9/2025 v.20.1

Earn rewards for product  
reviews and publications.

Submit a publication at [www.novusbio.com/publications](http://www.novusbio.com/publications)

Submit a review at [www.novusbio.com/reviews/destination/NBP2-02128](http://www.novusbio.com/reviews/destination/NBP2-02128)



**NBP2-02128**

IBRDC2 Antibody (OTI9H10)

Product Information	
Unit Size	0.1 ml
Concentration	0.8 mg/ml
Storage	Store at -20C. Avoid freeze-thaw cycles.
Clonality	Monoclonal
Clone	OTI9H10
Preservative	0.02% Sodium Azide
Isotype	IgG2b
Purity	Immunogen affinity purified
Buffer	PBS (pH 7.3), 1.0% BSA and 50% Glycerol
Target Molecular Weight	33.5 kDa

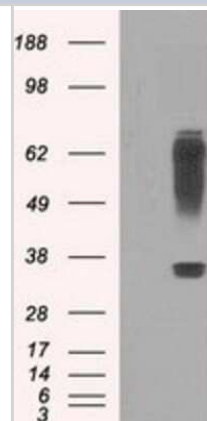
Product Description	
Description	Novus Biologicals Mouse IBRDC2 Antibody (OTI9H10) (NBP2-02128) is a monoclonal antibody validated for use in IHC, WB, Flow and ICC/IF. All Novus Biologicals antibodies are covered by our 100% guarantee.
Host	Mouse
Gene ID	255488
Gene Symbol	RNF144B
Species	Human, Mouse, Rat
Reactivity Notes	Please note that this antibody is reactive to Mouse and derived from the same host, Mouse. Mouse-On-Mouse blocking reagent may be needed for IHC and ICC experiments to reduce high background signal. You can find these reagents under catalog numbers PK-2200-NB and MP-2400-NB. Please contact Technical Support if you have any questions.
Immunogen	Human recombinant protein fragment corresponding to amino acids 1-256 of human RNF144B (NP_877434) produced in E. coli.

Product Application Details	
Applications	Western Blot, Immunohistochemistry-Paraffin, Flow Cytometry, Immunocytochemistry/ Immunofluorescence, Immunohistochemistry
Recommended Dilutions	Western Blot 1:2000, Flow Cytometry 1:100, Immunohistochemistry 1:50, Immunocytochemistry/ Immunofluorescence 1:50-100, Immunohistochemistry-Paraffin 1:50

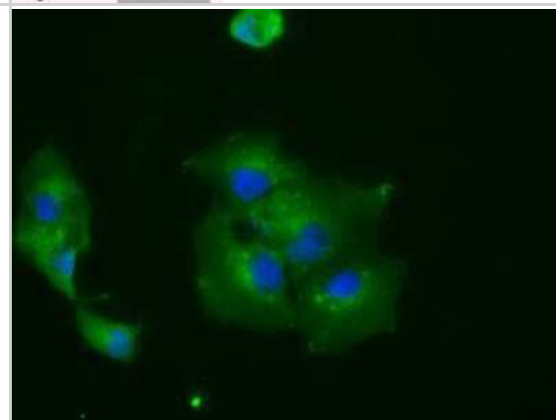


## Images

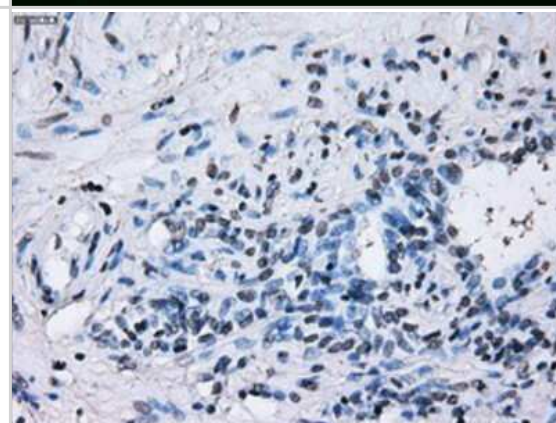
Western Blot: IBRDC2 Antibody (9H10) [NBP2-02128] - HEK293T cells were transfected with the pCMV6-ENTRY control (Left lane) or pCMV6-ENTRY IBRDC2 (Right lane) cDNA for 48 hrs and lysed. Equivalent amounts of cell lysates (5 ug per lane) were separated by SDS-PAGE and immunoblotted with anti-IBRDC2.



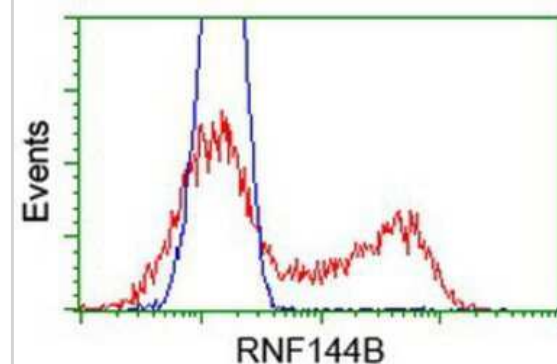
Immunocytochemistry/Immunofluorescence: IBRDC2 Antibody (9H10) [NBP2-02128] Staining of COS7 cells transiently transfected by pCMV6-ENTRY IBRDC2.



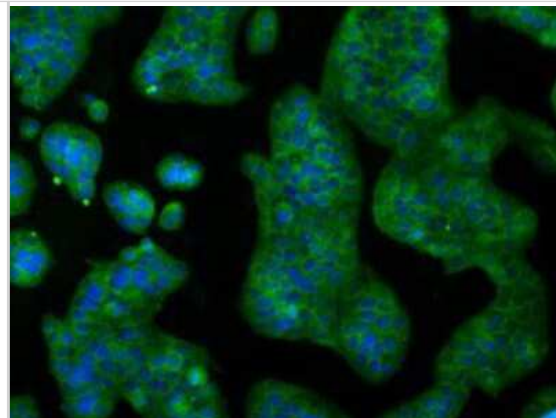
Immunohistochemistry-Paraffin: IBRDC2 Antibody (9H10) [NBP2-02128] - Staining of paraffin-embedded Human prostate tissue using anti-IBRDC2 mouse monoclonal antibody.



Flow Cytometry: IBRDC2 Antibody (9H10) [NBP2-02128] - HEK293T cells transfected with either overexpression plasmid (Red) or empty vector control plasmid (Blue) were immunostained by anti-IBRDC2 antibody, and then analyzed by flow cytometry.



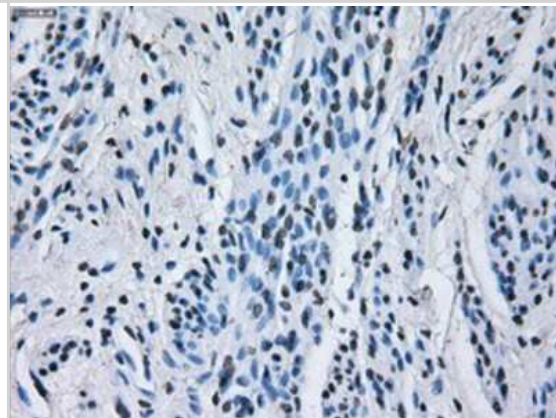
Immunocytochemistry/Immunofluorescence: IBRDC2 Antibody (9H10) [NBP2-02128] - Immunofluorescent staining of HeLa cells using anti-IBRDC2 mouse monoclonal antibody.



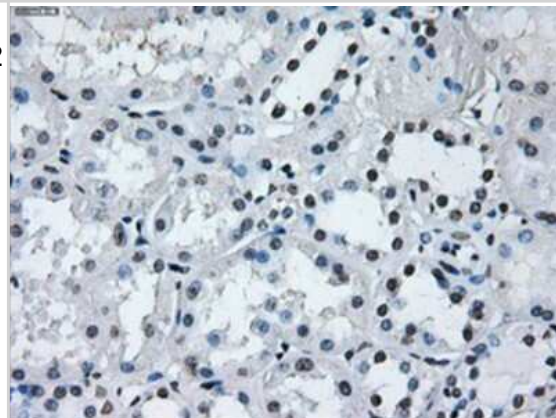
Immunohistochemistry-Paraffin: IBRDC2 Antibody (9H10) [NBP2-02128] - Staining of paraffin-embedded Human colon tissue using anti-IBRDC2 mouse monoclonal antibody.



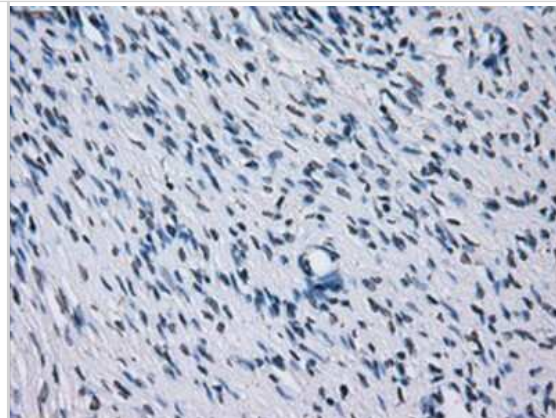
Immunohistochemistry-Paraffin: IBRDC2 Antibody (9H10) [NBP2-02128] - Staining of paraffin-embedded Human endometrium tissue using anti-IBRDC2 mouse monoclonal antibody.



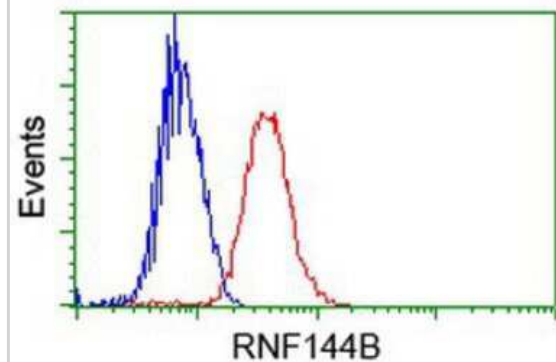
Immunohistochemistry-Paraffin: IBRDC2 Antibody (9H10) [NBP2-02128] - Staining of paraffin-embedded Human Kidney tissue using anti-IBRDC2 mouse monoclonal antibody.



Immunohistochemistry-Paraffin: IBRDC2 Antibody (9H10) [NBP2-02128]  
- Staining of paraffin-embedded Human Ovary tissue using anti-IBRDC2 mouse monoclonal antibody.



Flow Cytometry: IBRDC2 Antibody (9H10) [NBP2-02128] - Analysis of Jurkat cells, using anti-IBRDC2 antibody, (Red), compared to a nonspecific negative control antibody (Blue).





### **Novus Biologicals USA**

10730 E. Briarwood Avenue  
Centennial, CO 80112  
USA  
Phone: 303.730.1950  
Toll Free: 1.888.506.6887  
Fax: 303.730.1966  
nb-customerservice@bio-techne.com

### **Bio-Techne Canada**

21 Canmotor Ave  
Toronto, ON M8Z 4E6  
Canada  
Phone: 905.827.6400  
Toll Free: 855.668.8722  
Fax: 905.827.6402  
canada.inquires@bio-techne.com

### **Bio-Techne Ltd**

19 Barton Lane  
Abingdon Science Park  
Abingdon, OX14 3NB, United Kingdom  
Phone: (44) (0) 1235 529449  
Free Phone: 0800 37 34 15  
Fax: (44) (0) 1235 533420  
info.EMEA@bio-techne.com

### **General Contact Information**

www.novusbio.com  
Technical Support: nb-technical@bio-techne.com  
Orders: nb-customerservice@bio-techne.com  
General: novus@novusbio.com

### **Products Related to NBP2-02128**

---

NBP2-33376H	Blue Marker Antibody (6F4-F6) [HRP]
HAF007	Goat anti-Mouse IgG Secondary Antibody [HRP]
NB7539	Goat anti-Mouse IgG (H+L) Secondary Antibody [HRP]
NBP2-27231	Mouse IgG2b Isotype Control (MPC-11)

---

### **Limitations**

This product is for research use only and is not approved for use in humans or in clinical diagnosis. Primary Antibodies are guaranteed for 1 year from date of receipt.

For more information on our 100% guarantee, please visit [www.novusbio.com/guarantee](http://www.novusbio.com/guarantee)

Earn gift cards/discounts by submitting a review: [www.novusbio.com/reviews/submit/NBP2-02128](http://www.novusbio.com/reviews/submit/NBP2-02128)

Earn gift cards/discounts by submitting a publication using this product:  
[www.novusbio.com/publications](http://www.novusbio.com/publications)

