

Product Datasheet

PSMA/FOLH1/NAALADase I Antibody (OTI3H5) NBP2-02045

Unit Size: 0.1 ml

Store at -20C. Avoid freeze-thaw cycles.

www.novusbio.com



technical@novusbio.com

Publications: 2

Protocols, Publications, Related Products, Reviews, Research Tools and Images at:
www.novusbio.com/NBP2-02045

Updated 10/27/2024 v.20.1

Earn rewards for product
reviews and publications.

Submit a publication at www.novusbio.com/publications

Submit a review at www.novusbio.com/reviews/destination/NBP2-02045



NBP2-02045**PSMA/FOLH1/NAALADase I Antibody (OTI3H5)****Product Information**

Unit Size	0.1 ml
Concentration	0.71 mg/ml
Storage	Store at -20C. Avoid freeze-thaw cycles.
Clonality	Monoclonal
Clone	OTI3H5
Preservative	0.02% Sodium Azide
Isotype	IgG1
Purity	Immunogen affinity purified
Buffer	PBS (pH 7.3), 1.0% BSA and 50% Glycerol
Target Molecular Weight	84.2 kDa

Product Description

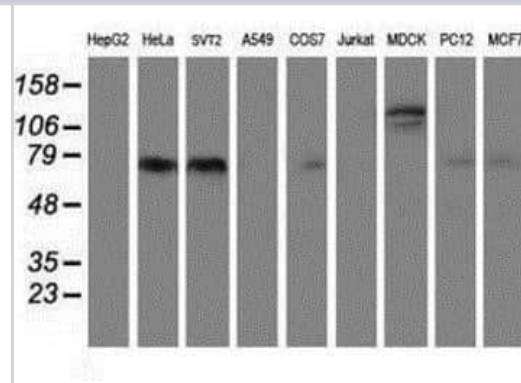
Host	Mouse
Gene ID	2346
Gene Symbol	FOLH1
Species	Human, Mouse
Reactivity Notes	Please note that this antibody is reactive to Mouse and derived from the same host, Mouse. Mouse-On-Mouse blocking reagent may be needed for IHC and ICC experiments to reduce high background signal. You can find these reagents under catalog numbers PK-2200-NB and MP-2400-NB. Please contact Technical Support if you have any questions.
Immunogen	Full length human recombinant protein of human FOLH1(NP_004467) produced in HEK293T cell.

Product Application Details

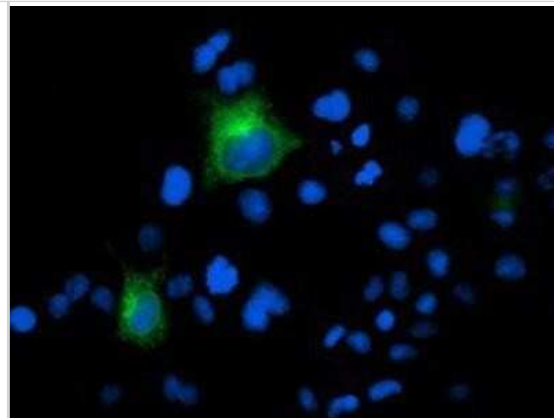
Applications	Western Blot, Flow Cytometry, Immunocytochemistry/ Immunofluorescence, Immunohistochemistry, Immunohistochemistry-Paraffin
Recommended Dilutions	Western Blot 1:500-1000, Flow Cytometry 1:100, Immunohistochemistry 1:150, Immunocytochemistry/ Immunofluorescence 1:100, Immunohistochemistry-Paraffin 1:150

Images

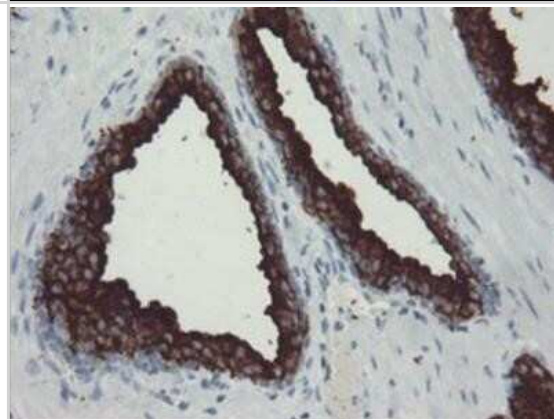
Western Blot: PSMA/FOLH1/NAALADase I Antibody (OTI3H5) [NBP2-02045] - Analysis of extracts (35ug) from 9 different cell lines by using anti-PSMA monoclonal antibody (HepG2: human; HeLa: human; SVT2: mouse; A549: human; COS7: monkey; Jurkat: human; MDCK: canine; PC12: rat; MCF7: human).



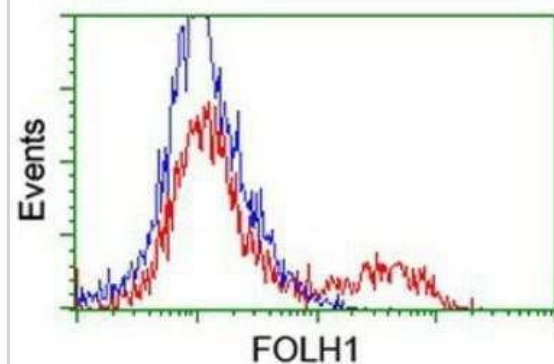
Immunocytochemistry/Immunofluorescence: PSMA/FOLH1/NAALADase I Antibody (OTI3H5) [NBP2-02045] - Staining of COS7 cells transiently transfected by pCMV6-ENTRY PSMA.



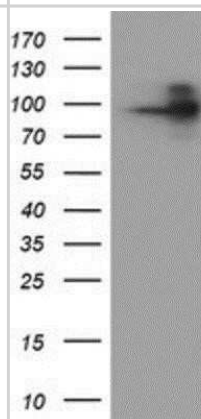
Immunohistochemistry-Paraffin: PSMA/FOLH1/NAALADase I Antibody (OTI3H5) [NBP2-02045] - Staining of paraffin-embedded Carcinoma of Human prostate tissue using anti-PSMA mouse monoclonal antibody.



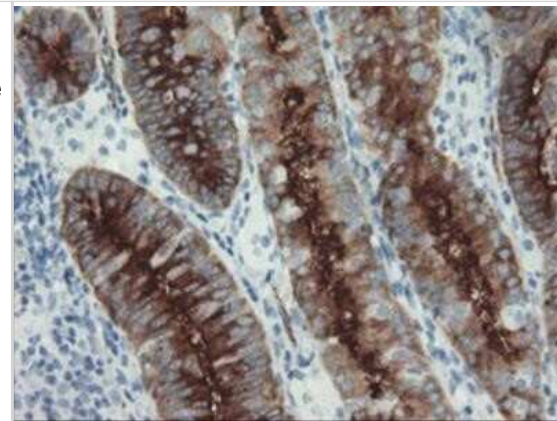
Flow Cytometry: PSMA/FOLH1/NAALADase I Antibody (OTI3H5) [NBP2-02045] - HEK293T cells transfected with either overexpression plasmid (Red) or empty vector control plasmid (Blue) were immunostained by anti-PSMA antibody, and then analyzed by flow cytometry.



Western Blot: PSMA/FOLH1/NAALADase I Antibody (OTI3H5) [NBP2-02045] - Transfected with the pCMV6-ENTRY control (Left lane) or pCMV6-ENTRY PSMA (Right lane) cDNA for 48 hrs and lysed. Equivalent amounts of cell lysates (5 ug per lane) were separated by SDS-PAGE and immunoblotted with anti-PSMA.



Immunohistochemistry-Paraffin: PSMA/FOLH1/NAALADase I Antibody (OTI3H5) [NBP2-02045] - Staining of paraffin-embedded Adenocarcinoma of Human endometrium tissue using anti-PSMA mouse monoclonal antibody.



Publications

Rozolen JM, Teodoro TGW, Sobral RA Et al. Investigation of Prognostic Value of Claudin-5, PSMA, and Ki67 Expression in Canine Splenic Hemangiosarcoma Animals : an open access journal from MDPI 2021-08-14 [PMID: 34438863] (IHC-P)

Millan C, Prause L, Vallmajo-Martin Q et al. Extracellular Vesicles from 3D Engineered Microtissues Harbor Disease-Related Cargo Absent in EVs from 2D Cultures Advanced healthcare materials 2021-04-22 [PMID: 33890421]



Novus Biologicals USA

10730 E. Briarwood Avenue
Centennial, CO 80112
USA
Phone: 303.730.1950
Toll Free: 1.888.506.6887
Fax: 303.730.1966
nb-customerservice@bio-techne.com

Bio-Techne Canada

21 Canmotor Ave
Toronto, ON M8Z 4E6
Canada
Phone: 905.827.6400
Toll Free: 855.668.8722
Fax: 905.827.6402
canada.inquires@bio-techne.com

Bio-Techne Ltd

19 Barton Lane
Abingdon Science Park
Abingdon, OX14 3NB, United Kingdom
Phone: (44) (0) 1235 529449
Free Phone: 0800 37 34 15
Fax: (44) (0) 1235 533420
info.EMEA@bio-techne.com

General Contact Information

www.novusbio.com
Technical Support: nb-technical@bio-
techne.com
Orders: nb-customerservice@bio-techne.com
General: novus@novusbio.com

Limitations

This product is for research use only and is not approved for use in humans or in clinical diagnosis. Primary Antibodies are guaranteed for 1 year from date of receipt.

For more information on our 100% guarantee, please visit www.novusbio.com/guarantee

Earn gift cards/discounts by submitting a review: www.novusbio.com/reviews/submit/NBP2-02045

Earn gift cards/discounts by submitting a publication using this product:
www.novusbio.com/publications

