

Product Datasheet

APMAP Antibody (OTI4F6)

NBP2-01716

Unit Size: 0.1 ml

Store at -20C. Avoid freeze-thaw cycles.

www.novusbio.com



technical@novusbio.com

Publications: 1

Protocols, Publications, Related Products, Reviews, Research Tools and Images at:
www.novusbio.com/NBP2-01716

Updated 10/23/2024 v.20.1

Earn rewards for product
reviews and publications.

Submit a publication at www.novusbio.com/publications

Submit a review at www.novusbio.com/reviews/destination/NBP2-01716



NBP2-01716

APMAP Antibody (OTI4F6)

Product Information

Unit Size	0.1 ml
Concentration	0.85 mg/ml
Storage	Store at -20C. Avoid freeze-thaw cycles.
Clonality	Monoclonal
Clone	OTI4F6
Preservative	0.02% Sodium Azide
Isotype	IgG2b
Purity	Immunogen affinity purified
Buffer	PBS (pH 7.3), 1.0% BSA and 50% Glycerol
Target Molecular Weight	46.3 kDa

Product Description

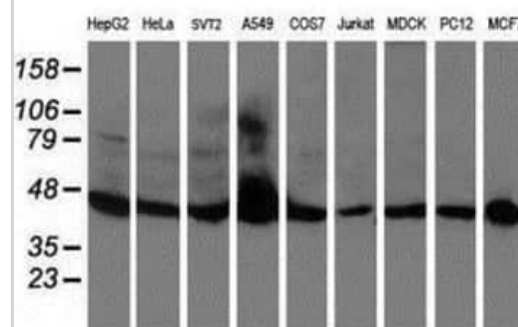
Host	Mouse
Gene ID	57136
Gene Symbol	APMAP
Species	Human, Mouse, Rat, Canine, Monkey
Reactivity Notes	Please note that this antibody is reactive to Mouse and derived from the same host, Mouse. Mouse-On-Mouse blocking reagent may be needed for IHC and ICC experiments to reduce high background signal. You can find these reagents under catalog numbers PK-2200-NB and MP-2400-NB. Please contact Technical Support if you have any questions.
Immunogen	Full length human recombinant protein of human C20orf3(NP_065392) produced in HEK293T cell.

Product Application Details

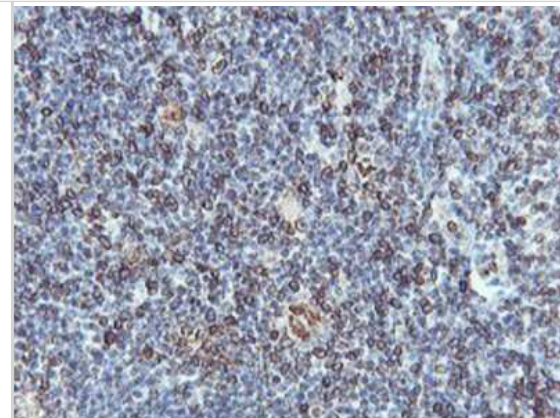
Applications	Western Blot, Flow Cytometry, Immunohistochemistry, Immunohistochemistry-Paraffin
Recommended Dilutions	Western Blot 1:500-2000, Flow Cytometry 1:100, Immunohistochemistry 1:150, Immunohistochemistry-Paraffin 1:150

Images

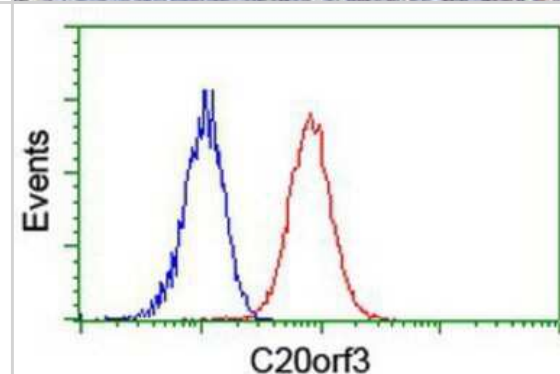
Western Blot: APMAP Antibody (OTI4F6) [NBP2-01716] - Analysis of extracts (35ug) from 9 different cell lines by using anti-APMAP monoclonal antibody.



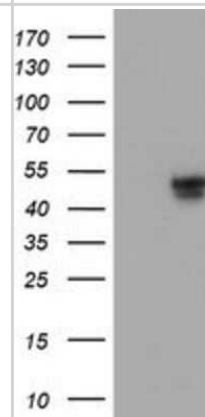
Immunohistochemistry-Paraffin: APMAP Antibody (OTI4F6) [NBP2-01716] - Staining of paraffin-embedded Human tonsil using anti-APMAP mouse monoclonal antibody.



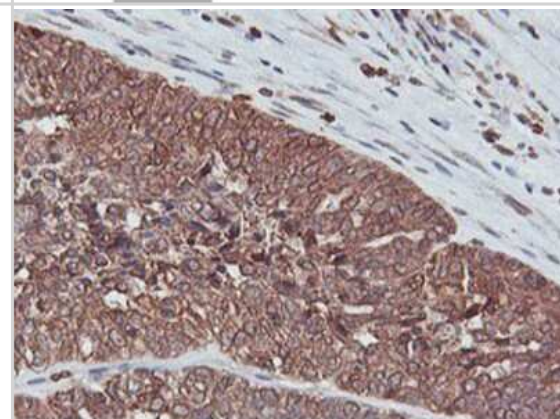
Flow Cytometry: APMAP Antibody (OTI4F6) [NBP2-01716] - Analysis of Jurkat cells, using anti-APMAP antibody, (Red), compared to a nonspecific negative control antibody (Blue).



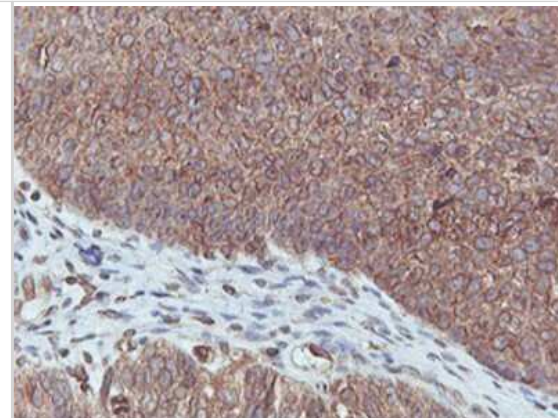
Western Blot: APMAP Antibody (OTI4F6) [NBP2-01716] - HEK293T cells were transfected with the pCMV6-ENTRY control (Left lane) or pCMV6-ENTRY APMAP (Right lane) cDNA for 48 hrs and lysed. Equivalent amounts of cell lysates (5 ug per lane) were separated by SDS-PAGE and immunoblotted with anti-APMAP.



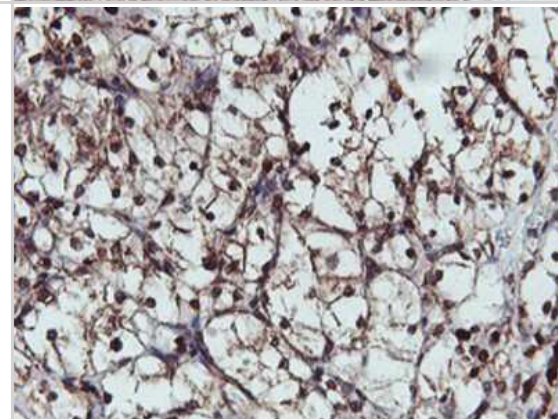
Immunohistochemistry-Paraffin: APMAP Antibody (OTI4F6) [NBP2-01716] - Staining of paraffin-embedded Adenocarcinoma of Human ovary tissue using anti-APMAP mouse monoclonal antibody.



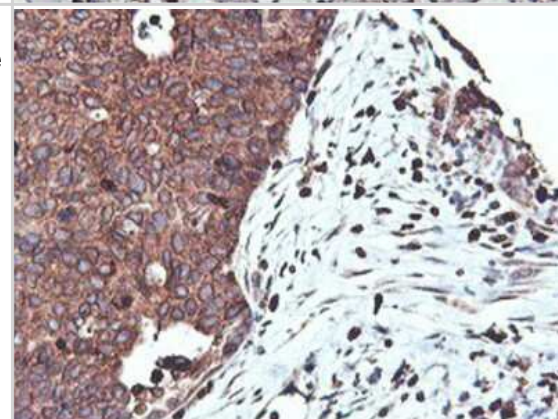
Immunohistochemistry-Paraffin: APMAP Antibody (OTI4F6) [NBP2-01716] - Staining of paraffin-embedded Carcinoma of Human bladder tissue using anti-APMAP mouse monoclonal antibody.



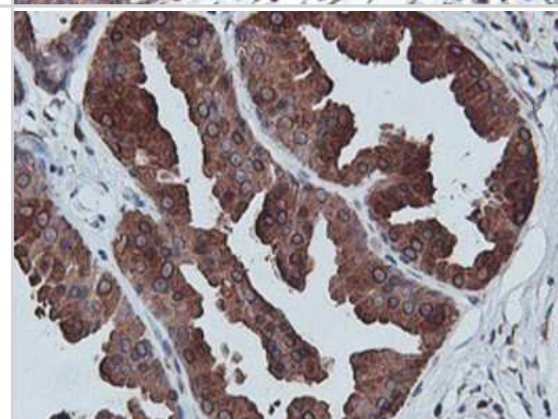
Immunohistochemistry-Paraffin: APMAP Antibody (OTI4F6) [NBP2-01716] - Staining of paraffin-embedded Carcinoma of Human kidney tissue using anti-APMAP mouse monoclonal antibody.



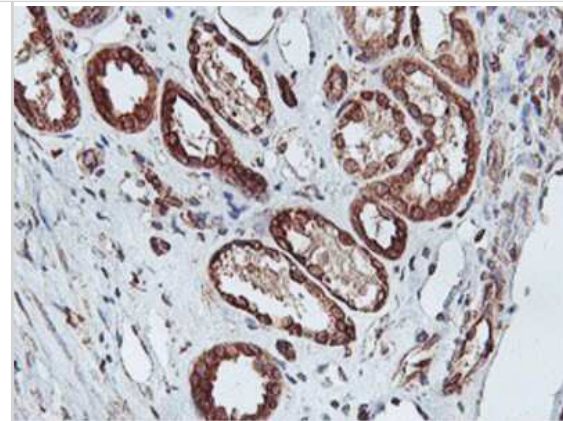
Immunohistochemistry-Paraffin: APMAP Antibody (OTI4F6) [NBP2-01716] - Staining of paraffin-embedded Carcinoma of Human lung tissue using anti-APMAP mouse monoclonal antibody.



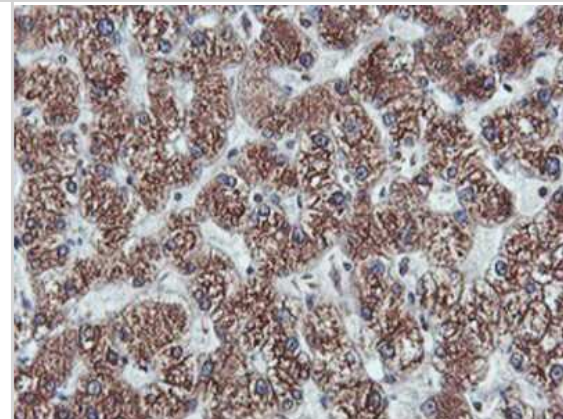
Immunohistochemistry-Paraffin: APMAP Antibody (OTI4F6) [NBP2-01716] - Staining of paraffin-embedded Human breast tissue using anti-APMAP mouse monoclonal antibody.



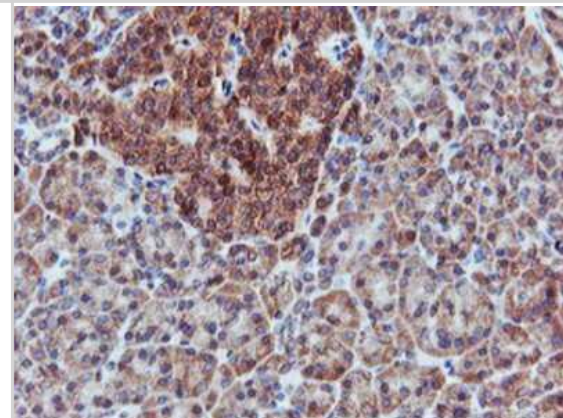
Immunohistochemistry-Paraffin: APMAP Antibody (OTI4F6) [NBP2-01716] - Staining of paraffin-embedded Human Kidney tissue using anti-APMAP mouse monoclonal antibody.



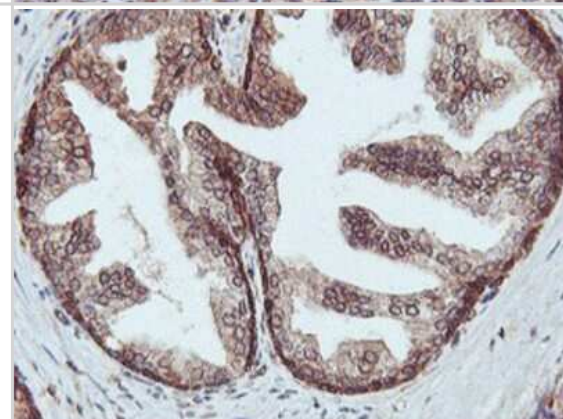
Immunohistochemistry-Paraffin: APMAP Antibody (OTI4F6) [NBP2-01716] - Staining of paraffin-embedded Human liver tissue using anti-APMAP mouse monoclonal antibody.



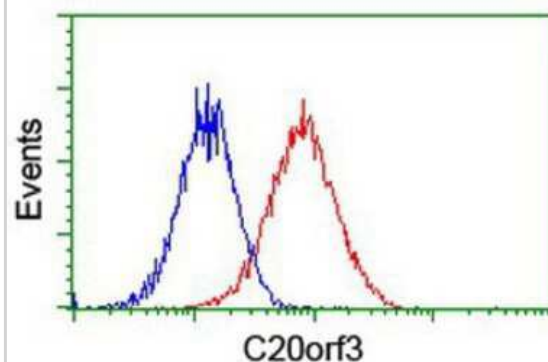
Immunohistochemistry-Paraffin: APMAP Antibody (OTI4F6) [NBP2-01716] - Staining of paraffin-embedded Human pancreas tissue using anti-APMAP mouse monoclonal antibody.



Immunohistochemistry-Paraffin: APMAP Antibody (OTI4F6) [NBP2-01716] - Staining of paraffin-embedded Human prostate tissue using anti-APMAP mouse monoclonal antibody.

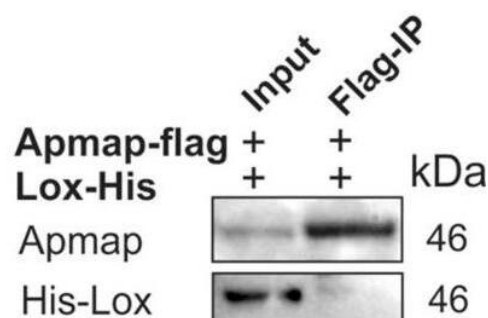


Flow Cytometry: APMAP Antibody (OTI4F6) [NBP2-01716] - Analysis of HeLa cells, using anti-APMAP antibody, (Red), compared to a nonspecific negative control antibody (Blue).



Western Blot: APMAP Antibody (OTI4F6) [NBP2-01716] - APMAP interacts with LOXL1 & 3 & influences their expression level. A) Protein expression of LOXL3 in eWAT of HFD-fed ApmmapE1-KO & WT mice; n = 3–4. B) mRNA expression of Lox, Loxl1, & Loxl3 in eWAT; n ≥ 4. C–E) Interaction of APMAP_E1 with LOXL1 (C), LOXL3 (D), & LOX (E) in COS7 cells. Pulldown was performed with flag beads. COS7 cells were transfected with Loxl1/-3-flag or Apmmap-flag vectors and His-Apmmap or His-Lox vector. Empty pCMV 5.1 flag & His-LacZ served as controls. One representative pulldown of n ≥ 3 is shown. F) Scheme of APMAP full-length & truncated protein variants. TM, transmembrane region. G, H) Flag bead pulldown with LOXL1-flag (G) & LOXL3-flag (H) & APMAP_E1 & truncated variants (E2, -3, -6) in COS7 cells. *P ≤ 0.05, **P ≤ 0.01 (Student's t test). Image collected & cropped by CiteAb from the following publication (<https://pubmed.ncbi.nlm.nih.gov/28559441>), licensed under a CC-BY license. Not internally tested by Novus Biologicals.

E pulldown LOX/APMAP



Western Blot: APMAP Antibody (OTI4F6) [NBP2-01716] - APMAP interacts with LOXL1 & 3 & influences their expression level. A) Protein expression of LOXL3 in eWAT of HFD-fed ApmmapE1-KO & WT mice; n = 3–4. B) mRNA expression of Lox, Loxl1, & Loxl3 in eWAT; n ≥ 4. C–E) Interaction of APMAP_E1 with LOXL1 (C), LOXL3 (D), & LOX (E) in COS7 cells. Pulldown was performed with flag beads. COS7 cells were transfected with Loxl1/-3-flag or Apmmap-flag vectors and His-Apmmap or His-Lox vector. Empty pCMV 5.1 flag & His-LacZ served as controls. One representative pulldown of n ≥ 3 is shown. F) Scheme of APMAP full-length & truncated protein variants. TM, transmembrane region. G, H) Flag bead pulldown with LOXL1-flag (G) & LOXL3-flag (H) & APMAP_E1 & truncated variants (E2, -3, -6) in COS7 cells. *P ≤ 0.05, **P ≤ 0.01 (Student's t test). Image collected & cropped by CiteAb from the following publication (<https://pubmed.ncbi.nlm.nih.gov/28559441>), licensed under a CC-BY license. Not internally tested by Novus Biologicals.



Publications

Pessentheiner AR, Huber K, Pelzmann HJ et al. APMAP interacts with lysyl oxidase-like proteins, and disruption of Apmmap leads to beneficial visceral adipose tissue expansion. FASEB J. 2017-05-30 [PMID: 28559441] (WB, Mouse)



Novus Biologicals USA

10730 E. Briarwood Avenue
Centennial, CO 80112
USA
Phone: 303.730.1950
Toll Free: 1.888.506.6887
Fax: 303.730.1966
nb-customerservice@bio-techne.com

Bio-Techne Canada

21 Canmotor Ave
Toronto, ON M8Z 4E6
Canada
Phone: 905.827.6400
Toll Free: 855.668.8722
Fax: 905.827.6402
canada.inquires@bio-techne.com

Bio-Techne Ltd

19 Barton Lane
Abingdon Science Park
Abingdon, OX14 3NB, United Kingdom
Phone: (44) (0) 1235 529449
Free Phone: 0800 37 34 15
Fax: (44) (0) 1235 533420
info.EMEA@bio-techne.com

General Contact Information

www.novusbio.com
Technical Support: nb-technical@bio-techne.com
Orders: nb-customerservice@bio-techne.com
General: novus@novusbio.com

Products Related to NBP2-01716

HAF007	Goat anti-Mouse IgG Secondary Antibody [HRP]
NB720-B	Rabbit anti-Mouse IgG (H+L) Secondary Antibody [Biotin]
NBP2-27231	Mouse IgG2b Isotype Control (MPC-11)
NBP2-51969-0.1mg	Recombinant Human APMAP His Protein

Limitations

This product is for research use only and is not approved for use in humans or in clinical diagnosis. Primary Antibodies are guaranteed for 1 year from date of receipt.

For more information on our 100% guarantee, please visit www.novusbio.com/guarantee

Earn gift cards/discounts by submitting a review: www.novusbio.com/reviews/submit/NBP2-01716

Earn gift cards/discounts by submitting a publication using this product:
www.novusbio.com/publications

