

Product Datasheet

RGS16 Antibody (OTI4E5) NBP2-01584

Unit Size: 0.1 ml

Store at -20C. Avoid freeze-thaw cycles.

www.novusbio.com



technical@novusbio.com

Publications: 1

Protocols, Publications, Related Products, Reviews, Research Tools and Images at:
www.novusbio.com/NBP2-01584

Updated 9/9/2025 v.20.1

Earn rewards for product
reviews and publications.

Submit a publication at www.novusbio.com/publications

Submit a review at www.novusbio.com/reviews/destination/NBP2-01584



NBP2-01584

RGS16 Antibody (OTI4E5)

Product Information	
Unit Size	0.1 ml
Concentration	1 mg/ml
Storage	Store at -20C. Avoid freeze-thaw cycles.
Clonality	Monoclonal
Clone	OTI4E5
Preservative	0.02% Sodium Azide
Isotype	IgG1
Purity	Immunogen affinity purified
Buffer	PBS (pH 7.3), 1.0% BSA and 50% Glycerol
Target Molecular Weight	22.6 kDa

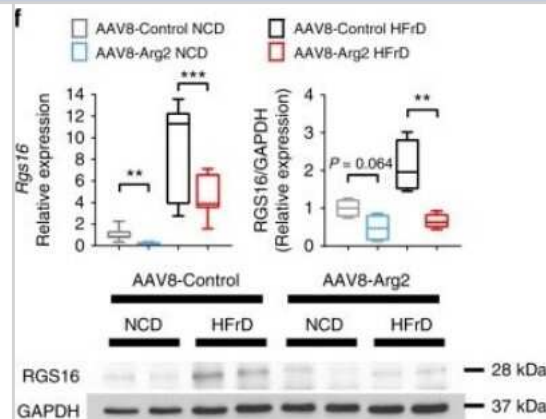
Product Description	
Description	Novus Biologicals Mouse RGS16 Antibody (OTI4E5) (NBP2-01584) is a monoclonal antibody validated for use in IHC, WB, Flow and ICC/IF. Anti-RGS16 Antibody: Cited in 1 publication. All Novus Biologicals antibodies are covered by our 100% guarantee.
Host	Mouse
Gene ID	6004
Gene Symbol	RGS16
Species	Human, Mouse, Rat
Reactivity Notes	Please note that this antibody is reactive to Mouse and derived from the same host, Mouse. Mouse-On-Mouse blocking reagent may be needed for IHC and ICC experiments to reduce high background signal. You can find these reagents under catalog numbers PK-2200-NB and MP-2400-NB. Please contact Technical Support if you have any questions.
Immunogen	Full length human recombinant protein of human RGS16(NP_002919) produced in HEK293T cell.

Product Application Details	
Applications	Western Blot, Immunohistochemistry-Paraffin, Flow Cytometry, Immunocytochemistry/ Immunofluorescence, Immunohistochemistry
Recommended Dilutions	Western Blot 1:500-2000, Flow Cytometry 1:100, Immunohistochemistry 1:150, Immunocytochemistry/ Immunofluorescence 1:100, Immunohistochemistry-Paraffin 1:150

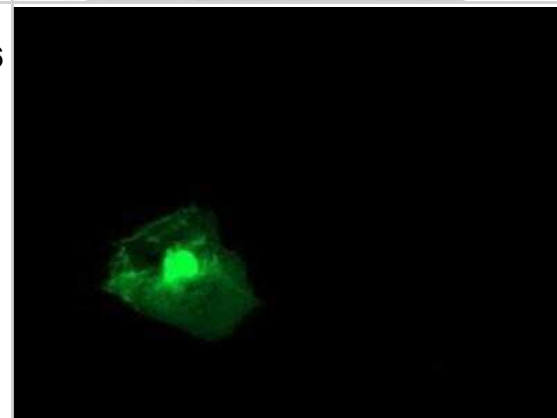


Images

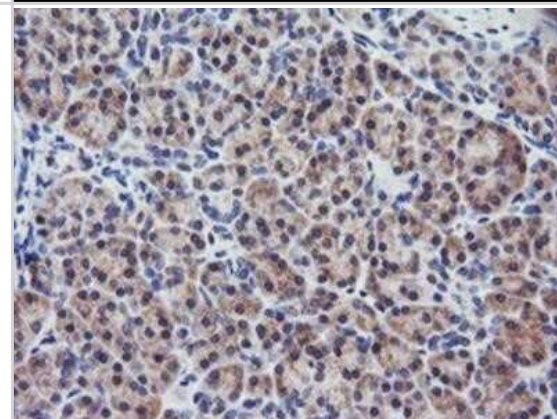
Western Blot: RGS16 Antibody (OTI4E5) [NBP2-01584] - Inverse Arg2-RGS16 regulatory relationship is identified by unbiased transcriptomics. RGS16 gene expression and protein abundance in HFrD-fed (f) AAV8-control and AAV8-Arg2 mouse livers. For box plots, the midline represents the median, boxes represent the interquartile range and whiskers show the full range of values. * $P < 0.05$, ** $P < 0.01$, *** $P < 0.005$, **** $P < 0.0001$; n.s., not significant; relative to control treatment, by two-tailed Student's t-test Image collected and cropped by CiteAb from the following publication (<https://www.nature.com/articles/s41467-019-09642-8>), licensed under a CC-BY license.



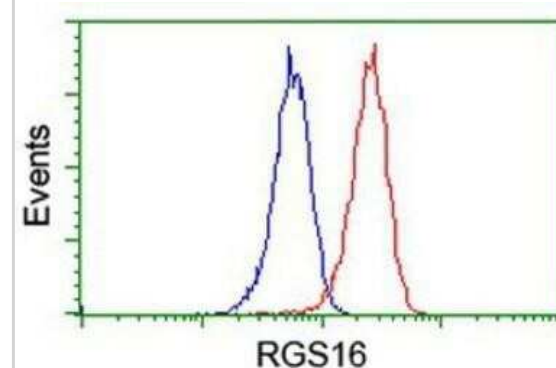
Immunocytochemistry/Immunofluorescence: RGS16 Antibody (OTI4E5) [NBP2-01584] - Staining of COS7 cells transiently transfected by pCMV6-ENTRY RGS16.



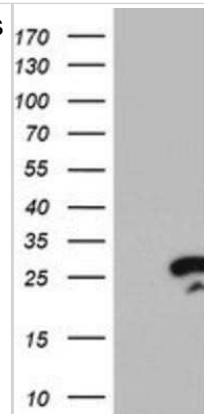
Immunohistochemistry-Paraffin: RGS16 Antibody (OTI4E5) [NBP2-01584] - Staining of paraffin-embedded Human pancreas tissue using anti-RGS16 mouse monoclonal antibody.



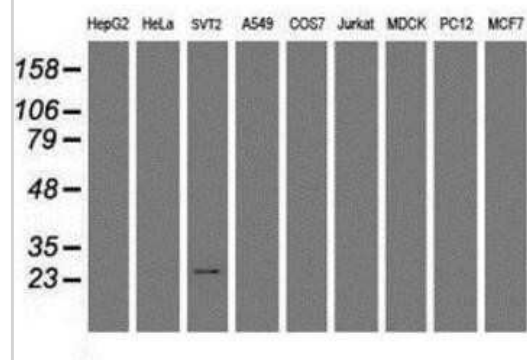
Flow Cytometry: RGS16 Antibody (OTI4E5) [NBP2-01584] - Analysis of Jurkat cells, using anti-RGS16 antibody, (Red), compared to a nonspecific negative control antibody (Blue).



Western Blot: RGS16 Antibody (OTI4E5) [NBP2-01584] - HEK293T cells were transfected with the pCMV6-ENTRY control (Left lane) or pCMV6-ENTRY RGS16 (Right lane) cDNA for 48 hrs and lysed. Equivalent amounts of cell lysates (5 ug per lane) were separated by SDS-PAGE and immunoblotted with anti-RGS16.



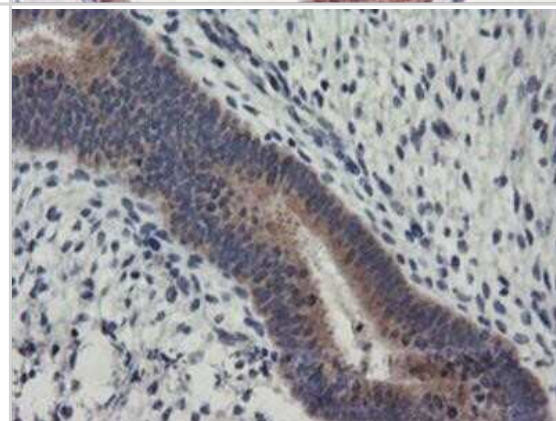
Western Blot: RGS16 Antibody (OTI4E5) [NBP2-01584] - Analysis of extracts (35ug) from 9 different cell lines by using anti-RGS16 monoclonal antibody.



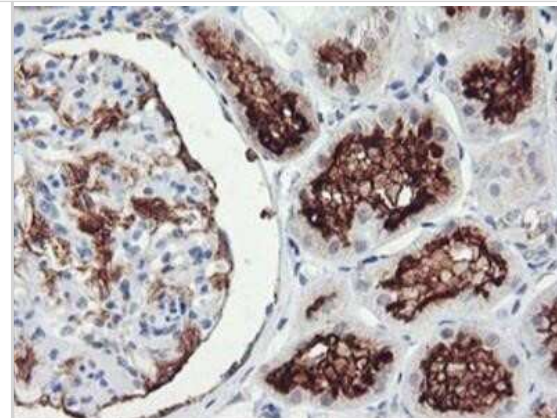
Immunohistochemistry-Paraffin: RGS16 Antibody (OTI4E5) [NBP2-01584] - Staining of paraffin-embedded Human breast tissue using anti-RGS16 mouse monoclonal antibody.



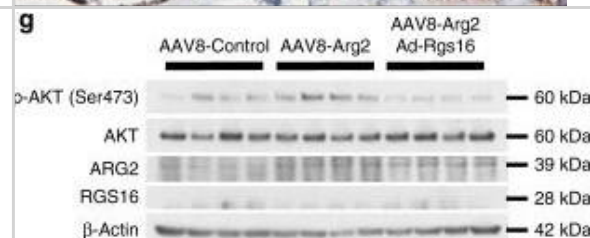
Immunohistochemistry-Paraffin: RGS16 Antibody (OTI4E5) [NBP2-01584] - Staining of paraffin-embedded Human endometrium tissue using anti-RGS16 mouse monoclonal antibody.



Immunohistochemistry-Paraffin: RGS16 Antibody (OTI4E5) [NBP2-01584] - Staining of paraffin-embedded Human Kidney tissue using anti-RGS16 mouse monoclonal antibody.



Western Blot: RGS16 Antibody (OTI4E5) [NBP2-01584] - Hepatic RGS16 reconstitution reverses Arg2-mediated improvements in peripheral fat accumulation & glucose homeostasis. a Experimental schematic used to test the role of AAV8-mediated mouse Arg2 & Ad-RGS16 overexpression in db/db mice. b Body weight & c body composition of AAV8-Control or AAV8-Arg2 db/db mice expressing Ad-Control or Ad-RGS16 (n = 8 per group). d VO₂, VCO₂, energy expenditure, & RER during light & dark cycles in AAV8-Control or AAV8-Arg2 db/db mice expressing Ad-Control or Ad-RGS16 (n = 8 per group). e Serum insulin (left), glucose (middle), & HOMA2 IR (right) in AAV8-Control or AAV8-Arg2 db/db mice expressing Ad-Control or Ad-RGS16 (n = 8 per group). f Intraperitoneal GTT & ITT (n = 5 mice per group). g Western blot analysis of total & phosphorylated AKT in liver samples from db/db AAV8-Control & AAV8-Arg2 mice (n = 4 mice per group). For box plots, the midline represents the median, boxes represent the interquartile range & whiskers show the full range of values. For bar graphs, data represent mean+s.e.m. *P < 0.05, **P < 0.01, ***P < 0.005, ****P < 0.0001; n.s., not significant; relative to control treatment, by two-tailed Student's t-test Image collected & cropped by CiteAb from the following publication (<https://pubmed.ncbi.nlm.nih.gov/30962478>), licensed under a CC-BY license. Not internally tested by Novus Biologicals.



Publications

Zhang, Y;Higgins, CB;Fortune, HM;Chen, P;Stothard, AI;Mayer, AL;Swarts, BM;DeBosch, BJ; Hepatic arginase 2 (Arg2) is sufficient to convey the therapeutic metabolic effects of fasting Nat Commun 2019-04-08 [PMID: 30962478] (WB, Mouse)



Novus Biologicals USA

10730 E. Briarwood Avenue
Centennial, CO 80112
USA
Phone: 303.730.1950
Toll Free: 1.888.506.6887
Fax: 303.730.1966
nb-customerservice@bio-techne.com

Bio-Techne Canada

21 Canmotor Ave
Toronto, ON M8Z 4E6
Canada
Phone: 905.827.6400
Toll Free: 855.668.8722
Fax: 905.827.6402
canada.inquires@bio-techne.com

Bio-Techne Ltd

19 Barton Lane
Abingdon Science Park
Abingdon, OX14 3NB, United Kingdom
Phone: (44) (0) 1235 529449
Free Phone: 0800 37 34 15
Fax: (44) (0) 1235 533420
info.EMEA@bio-techne.com

General Contact Information

www.novusbio.com
Technical Support: nb-technical@bio-techne.com
Orders: nb-customerservice@bio-techne.com
General: novus@novusbio.com

Products Related to NBP2-01584

HAF007	Goat anti-Mouse IgG Secondary Antibody [HRP]
NB720-B	Rabbit anti-Mouse IgG (H+L) Secondary Antibody [Biotin]
NBP1-97005-0.5mg	Mouse IgG1 Isotype Control (MG1)
NBP1-41226	Recombinant Human RGS16 His Protein

Limitations

This product is for research use only and is not approved for use in humans or in clinical diagnosis. Primary Antibodies are guaranteed for 1 year from date of receipt.

For more information on our 100% guarantee, please visit www.novusbio.com/guarantee

Earn gift cards/discounts by submitting a review: www.novusbio.com/reviews/submit/NBP2-01584

Earn gift cards/discounts by submitting a publication using this product:
www.novusbio.com/publications

