

Product Datasheet

Nucleotide binding protein like Antibody (OTI5D5) NBP2-01360

Unit Size: 0.1 ml

Store at -20C. Avoid freeze-thaw cycles.

www.novusbio.com



technical@novusbio.com

Protocols, Publications, Related Products, Reviews, Research Tools and Images at:
www.novusbio.com/NBP2-01360

Updated 1/13/2025 v.20.1

Earn rewards for product
reviews and publications.

Submit a publication at www.novusbio.com/publications

Submit a review at www.novusbio.com/reviews/destination/NBP2-01360



NBP2-01360

Nucleotide binding protein like Antibody (OTI5D5)

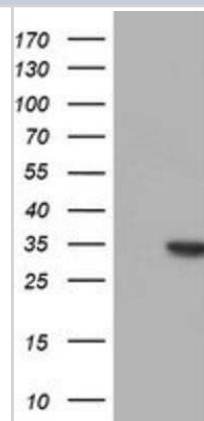
Product Information	
Unit Size	0.1 ml
Concentration	1.1 mg/ml
Storage	Store at -20C. Avoid freeze-thaw cycles.
Clonality	Monoclonal
Clone	OTI5D5
Preservative	0.02% Sodium Azide
Isotype	IgG2b
Purity	Immunogen affinity purified
Buffer	PBS (pH 7.3), 1.0% BSA and 50% Glycerol
Target Molecular Weight	33.9 kDa

Product Description	
Host	Mouse
Gene ID	80224
Gene Symbol	NUBPL
Species	Human, Mouse, Rat
Reactivity Notes	Please note that this antibody is reactive to Mouse and derived from the same host, Mouse. Mouse-On-Mouse blocking reagent may be needed for IHC and ICC experiments to reduce high background signal. You can find these reagents under catalog numbers PK-2200-NB and MP-2400-NB. Please contact Technical Support if you have any questions.
Immunogen	Human recombinant protein fragment corresponding to amino acids 1-250 of human NUBPL(NP_079428) produced in HEK293T cell.

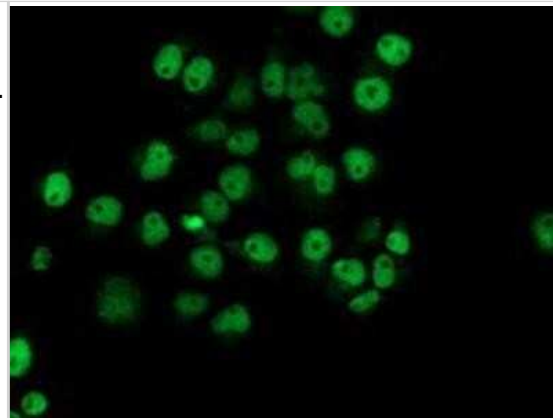
Product Application Details	
Applications	Western Blot, Flow Cytometry, Immunocytochemistry/ Immunofluorescence, Immunohistochemistry, Immunohistochemistry-Paraffin
Recommended Dilutions	Western Blot 1:2000, Flow Cytometry 1:100, Immunohistochemistry 1:150, Immunocytochemistry/ Immunofluorescence 1:100, Immunohistochemistry-Paraffin 1:150

Images

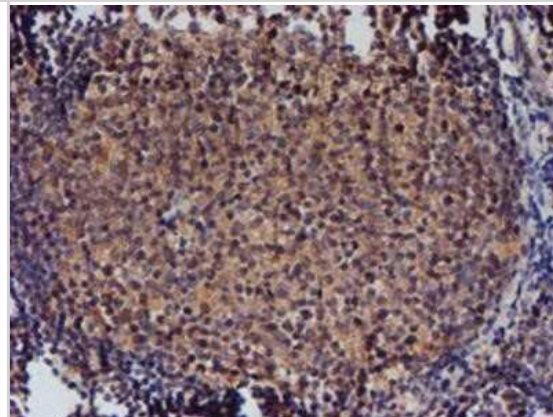
Western Blot: Nucleotide binding protein like Antibody (OTI5D5) [NBP2-01360] - HEK293T cells were transfected with the pCMV6-ENTRY control (Left lane) or pCMV6-ENTRY Nucleotide binding protein like (Right lane) cDNA for 48 hrs and lysed. Equivalent amounts of cell lysates (5 ug per lane) were separated by SDS-PAGE and immunoblotted with anti-Nucleotide binding protein like.



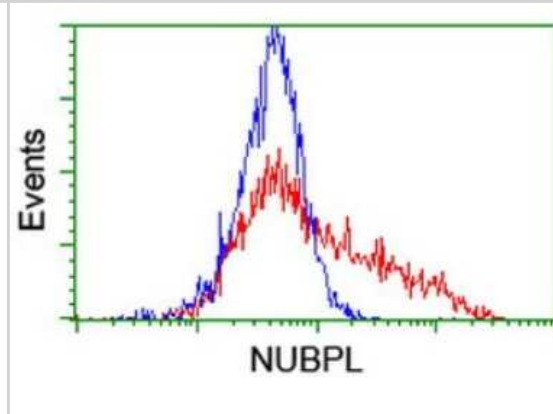
Immunocytochemistry/Immunofluorescence: Nucleotide binding protein like Antibody (OTI5D5) [NBP2-01360] - Staining of COS7 cells transiently transfected by pCMV6-ENTRY Nucleotide binding protein like.



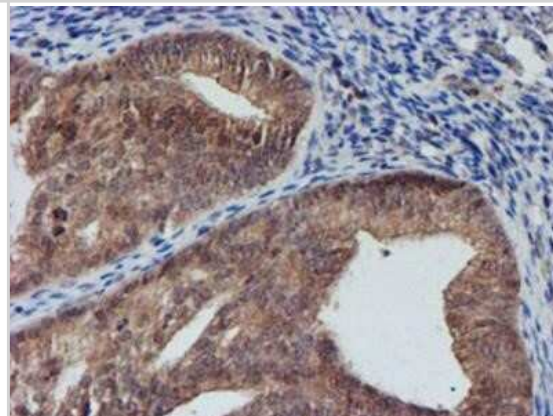
Immunohistochemistry-Paraffin: Nucleotide binding protein like Antibody (OTI5D5) [NBP2-01360] - Staining of paraffin-embedded Human tonsil using anti-Nucleotide binding protein like mouse monoclonal antibody.



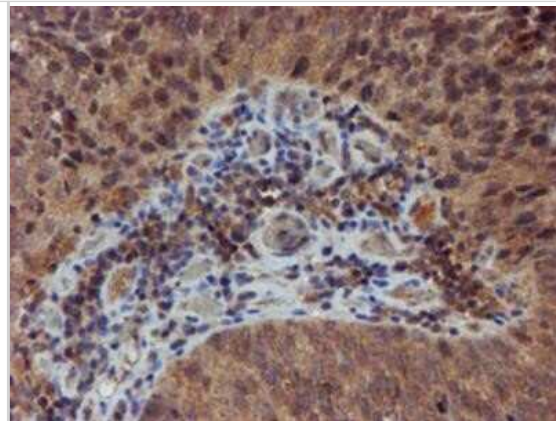
Flow Cytometry: Nucleotide binding protein like Antibody (OTI5D5) [NBP2-01360] - HEK293T cells transfected with either Nucleotide binding protein like Human Tagged ORF Clone overexpress plasmid (Red) or empty vector control plasmid (Blue) were immunostained by anti-NUBPL antibody, and then analyzed by flow cytometry.



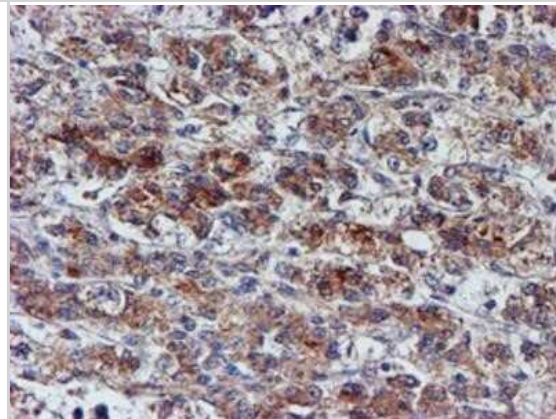
Immunohistochemistry-Paraffin: Nucleotide binding protein like Antibody (OTI5D5) [NBP2-01360] - Staining of paraffin-embedded Adenocarcinoma of Human endometrium tissue using anti-Nucleotide binding protein like mouse monoclonal antibody.



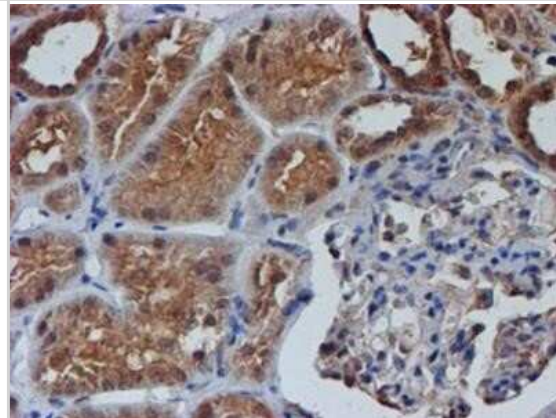
Immunohistochemistry-Paraffin: Nucleotide binding protein like Antibody (OTI5D5) [NBP2-01360] - Staining of paraffin-embedded Carcinoma of Human bladder tissue using anti-Nucleotide binding protein like mouse monoclonal antibody.



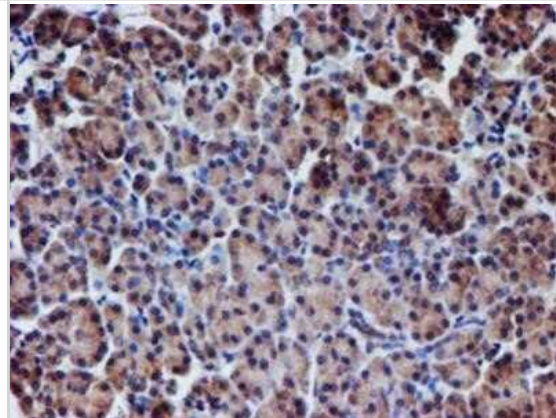
Immunohistochemistry-Paraffin: Nucleotide binding protein like Antibody (OTI5D5) [NBP2-01360] - Staining of paraffin-embedded Carcinoma of Human liver tissue using anti-Nucleotide binding protein like mouse monoclonal antibody.



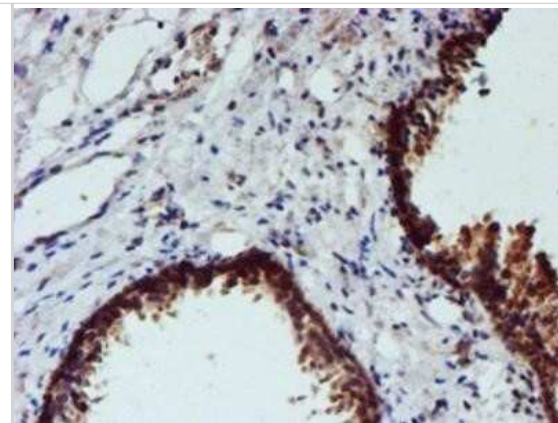
Immunohistochemistry-Paraffin: Nucleotide binding protein like Antibody (OTI5D5) [NBP2-01360] - Staining of paraffin-embedded Human Kidney tissue using anti-Nucleotide binding protein like mouse monoclonal antibody.



Immunohistochemistry-Paraffin: Nucleotide binding protein like Antibody (OTI5D5) [NBP2-01360] - Staining of paraffin-embedded Human pancreas tissue using anti-Nucleotide binding protein like mouse monoclonal antibody.



Immunohistochemistry-Paraffin: Nucleotide binding protein like Antibody (OT15D5) [NBP2-01360] - Staining of paraffin-embedded Human prostate tissue using anti-Nucleotide binding protein like mouse monoclonal antibody.





Novus Biologicals USA

10730 E. Briarwood Avenue
Centennial, CO 80112
USA
Phone: 303.730.1950
Toll Free: 1.888.506.6887
Fax: 303.730.1966
nb-customerservice@bio-techne.com

Bio-Techne Canada

21 Canmotor Ave
Toronto, ON M8Z 4E6
Canada
Phone: 905.827.6400
Toll Free: 855.668.8722
Fax: 905.827.6402
canada.inquires@bio-techne.com

Bio-Techne Ltd

19 Barton Lane
Abingdon Science Park
Abingdon, OX14 3NB, United Kingdom
Phone: (44) (0) 1235 529449
Free Phone: 0800 37 34 15
Fax: (44) (0) 1235 533420
info.EMEA@bio-techne.com

General Contact Information

www.novusbio.com
Technical Support: nb-technical@bio-
techne.com
Orders: nb-customerservice@bio-techne.com
General: novus@novusbio.com

Limitations

This product is for research use only and is not approved for use in humans or in clinical diagnosis. Primary Antibodies are guaranteed for 1 year from date of receipt.

For more information on our 100% guarantee, please visit www.novusbio.com/guarantee

Earn gift cards/discounts by submitting a review: www.novusbio.com/reviews/submit/NBP2-01360

Earn gift cards/discounts by submitting a publication using this product:
www.novusbio.com/publications

