

Product Datasheet

PDE4B Antibody (OTI1D12)

NBP2-01171

Unit Size: 0.1 ml

Store at -20C. Avoid freeze-thaw cycles.

www.novusbio.com



technical@novusbio.com

Publications: 1

Protocols, Publications, Related Products, Reviews, Research Tools and Images at:
www.novusbio.com/NBP2-01171

Updated 9/9/2025 v.20.1

Earn rewards for product
reviews and publications.

Submit a publication at www.novusbio.com/publications

Submit a review at www.novusbio.com/reviews/destination/NBP2-01171



NBP2-01171

PDE4B Antibody (OTI1D12)

Product Information	
Unit Size	0.1 ml
Concentration	0.62 mg/ml
Storage	Store at -20C. Avoid freeze-thaw cycles.
Clonality	Monoclonal
Clone	OTI1D12
Preservative	0.02% Sodium Azide
Isotype	IgG1
Purity	Immunogen affinity purified
Buffer	PBS (pH 7.3), 1.0% BSA and 50% Glycerol
Target Molecular Weight	83.2 kDa

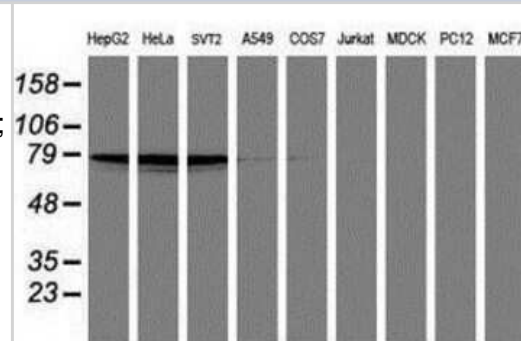
Product Description	
Description	Novus Biologicals Mouse PDE4B Antibody (OTI1D12) (NBP2-01171) is a monoclonal antibody validated for use in IHC, WB, Flow and ICC/IF. Anti-PDE4B Antibody: Cited in 1 publication. All Novus Biologicals antibodies are covered by our 100% guarantee.
Host	Mouse
Gene ID	5142
Gene Symbol	PDE4B
Species	Human, Mouse, Rat
Reactivity Notes	Please note that this antibody is reactive to Mouse and derived from the same host, Mouse. Mouse-On-Mouse blocking reagent may be needed for IHC and ICC experiments to reduce high background signal. You can find these reagents under catalog numbers PK-2200-NB and MP-2400-NB. Please contact Technical Support if you have any questions.
Immunogen	Full length human recombinant protein of human PDE4B(NP_002591) produced in HEK293T cell.

Product Application Details	
Applications	Western Blot, Immunohistochemistry-Paraffin, Flow Cytometry, Immunocytochemistry/ Immunofluorescence, Immunohistochemistry
Recommended Dilutions	Western Blot 1:500-2000, Flow Cytometry 1:100, Immunohistochemistry 1:150, Immunocytochemistry/ Immunofluorescence 1:100, Immunohistochemistry-Paraffin 1:150

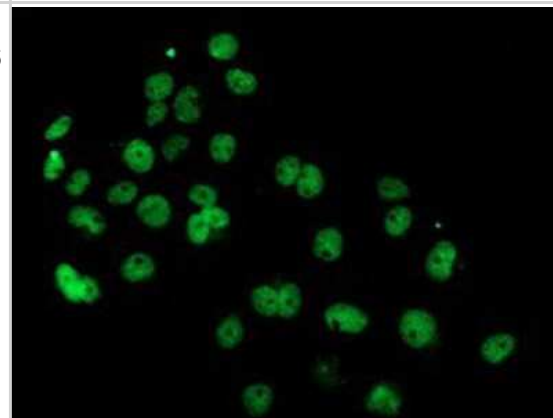


Images

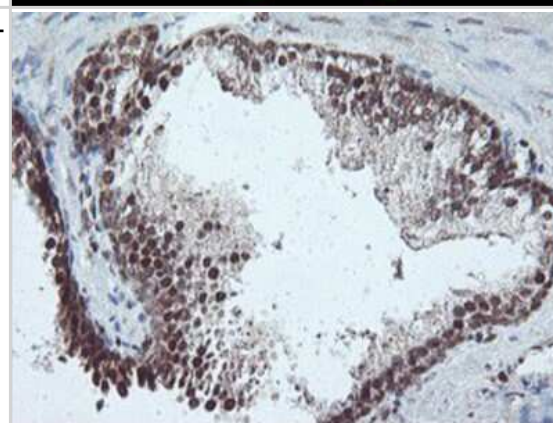
Western Blot: PDE4B Antibody (1D12) [NBP2-01171] Analysis of extracts (35ug) from 9 different cell lines by using anti-PDE4B monoclonal antibody (HepG2: human; HeLa: human; SVT2: mouse; A549: human; COS7: monkey; Jurkat: human; MDCK: canine; PC12: rat; MCF7: human).



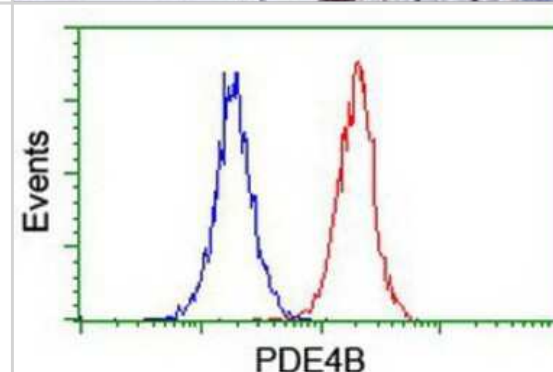
Immunocytochemistry/Immunofluorescence: PDE4B Antibody (1D12) [NBP2-01171] - Staining of COS7 cells transiently transfected by pCMV6-ENTRY PDE4B.



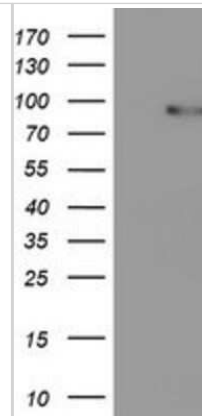
Immunohistochemistry-Paraffin: PDE4B Antibody (1D12) [NBP2-01171] - Staining of paraffin-embedded Human prostate tissue using anti-PDE4B mouse monoclonal antibody.



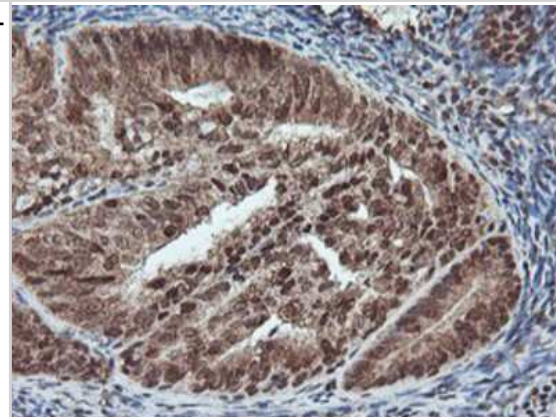
Flow Cytometry: PDE4B Antibody (1D12) [NBP2-01171] - Analysis of Jurkat cells, using anti-PDE4B antibody, (Red), compared to a nonspecific negative control antibody (Blue).



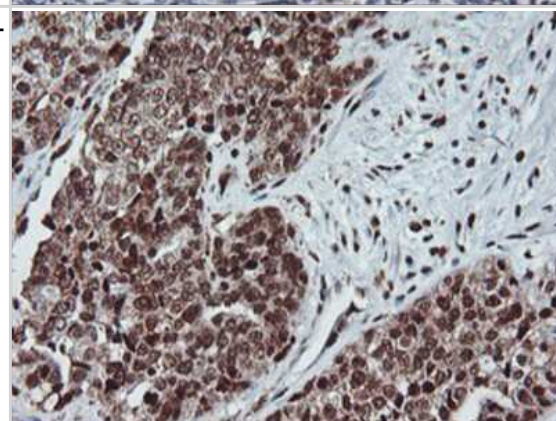
Western Blot: PDE4B Antibody (1D12) [NBP2-01171] - HEK293T cells were transfected with the pCMV6-ENTRY control (Left lane) or pCMV6-ENTRY PDE4B (Right lane) cDNA for 48 hrs and lysed. Equivalent amounts of cell lysates (5 ug per lane) were separated by SDS-PAGE and immunoblotted with anti-PDE4B.



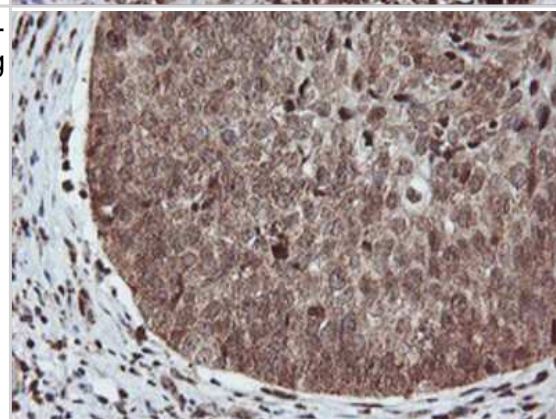
Immunohistochemistry-Paraffin: PDE4B Antibody (1D12) [NBP2-01171] - Staining of paraffin-embedded Adenocarcinoma of Human endometrium tissue using anti-PDE4B mouse monoclonal antibody.



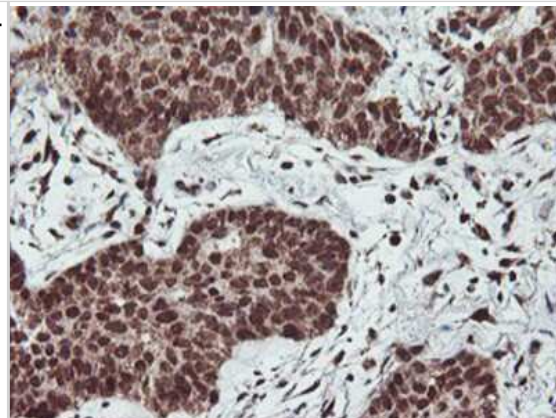
Immunohistochemistry-Paraffin: PDE4B Antibody (1D12) [NBP2-01171] - Staining of paraffin-embedded Adenocarcinoma of Human ovary tissue using anti-PDE4B mouse monoclonal antibody.



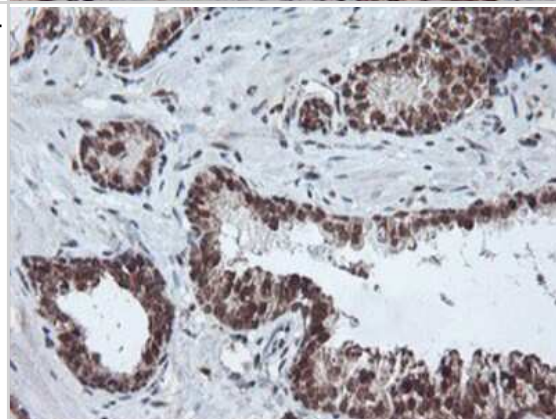
Immunohistochemistry-Paraffin: PDE4B Antibody (1D12) [NBP2-01171] - Staining of paraffin-embedded Carcinoma of Human bladder tissue using anti-PDE4B mouse monoclonal antibody.



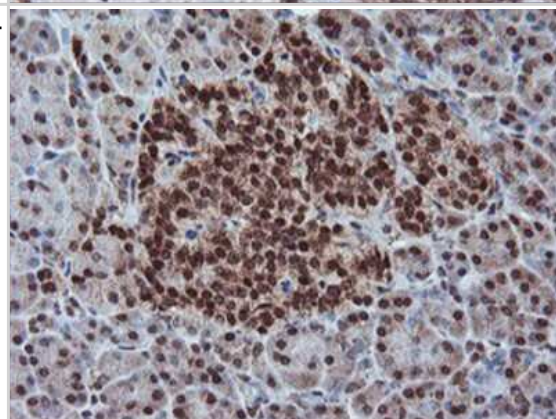
Immunohistochemistry-Paraffin: PDE4B Antibody (1D12) [NBP2-01171] - Staining of paraffin-embedded Carcinoma of Human lung tissue using anti-PDE4B mouse monoclonal antibody.



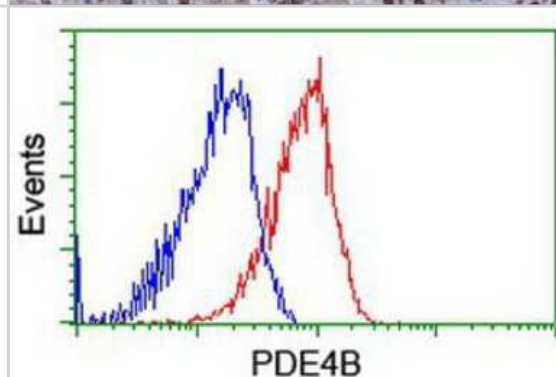
Immunohistochemistry-Paraffin: PDE4B Antibody (1D12) [NBP2-01171] - Staining of paraffin-embedded Carcinoma of Human prostate tissue using anti-PDE4B mouse monoclonal antibody.



Immunohistochemistry-Paraffin: PDE4B Antibody (1D12) [NBP2-01171] - Staining of paraffin-embedded Human pancreas tissue using anti-PDE4B mouse monoclonal antibody.



Flow Cytometry: PDE4B Antibody (1D12) [NBP2-01171] - Analysis of Hela cells, using anti-PDE4B antibody, (Red), compared to a nonspecific negative control antibody (Blue).



Publications

Varona S, Puertas L, GalAn M et al. Rolipram Prevents the Formation of Abdominal Aortic Aneurysm (AAA) in Mice: PDE4B as a Target in AAA Antioxidants 2021-03-16 [PMID: 33809405] (IHC-P, WB, Human)



Novus Biologicals USA

10730 E. Briarwood Avenue
Centennial, CO 80112
USA
Phone: 303.730.1950
Toll Free: 1.888.506.6887
Fax: 303.730.1966
nb-customerservice@bio-techne.com

Bio-Techne Canada

21 Canmotor Ave
Toronto, ON M8Z 4E6
Canada
Phone: 905.827.6400
Toll Free: 855.668.8722
Fax: 905.827.6402
canada.inquires@bio-techne.com

Bio-Techne Ltd

19 Barton Lane
Abingdon Science Park
Abingdon, OX14 3NB, United Kingdom
Phone: (44) (0) 1235 529449
Free Phone: 0800 37 34 15
Fax: (44) (0) 1235 533420
info.EMEA@bio-techne.com

General Contact Information

www.novusbio.com
Technical Support: nb-technical@bio-techne.com
Orders: nb-customerservice@bio-techne.com
General: novus@novusbio.com

Products Related to NBP2-01171

HAF007	Goat anti-Mouse IgG Secondary Antibody [HRP]
NB720-B	Rabbit anti-Mouse IgG (H+L) Secondary Antibody [Biotin]
NBP1-97005-0.5mg	Mouse IgG1 Isotype Control (MG1)
NBP1-84057PEP	PDE4B Recombinant Protein Antigen

Limitations

This product is for research use only and is not approved for use in humans or in clinical diagnosis. Primary Antibodies are guaranteed for 1 year from date of receipt.

For more information on our 100% guarantee, please visit www.novusbio.com/guarantee

Earn gift cards/discounts by submitting a review: www.novusbio.com/reviews/submit/NBP2-01171

Earn gift cards/discounts by submitting a publication using this product:
www.novusbio.com/publications

