

Product Datasheet

ErbB2/Her2 Antibody (OTI4F10) NBP2-01152

Unit Size: 0.1 ml

Store at -20C. Avoid freeze-thaw cycles.

www.novusbio.com



technical@novusbio.com

Publications: 1

Protocols, Publications, Related Products, Reviews, Research Tools and Images at:
www.novusbio.com/NBP2-01152

Updated 10/23/2024 v.20.1

Earn rewards for product
reviews and publications.

Submit a publication at www.novusbio.com/publications

Submit a review at www.novusbio.com/reviews/destination/NBP2-01152



NBP2-01152

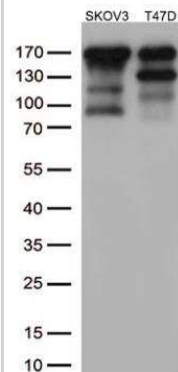
ErbB2/Her2 Antibody (OTI4F10)

Product Information	
Unit Size	0.1 ml
Concentration	1 mg/ml
Storage	Store at -20C. Avoid freeze-thaw cycles.
Clonality	Monoclonal
Clone	OTI4F10
Preservative	0.02% Sodium Azide
Isotype	IgG2a
Purity	Immunogen affinity purified
Buffer	PBS (pH 7.3), 1.0% BSA and 50% Glycerol
Target Molecular Weight	137.7 kDa
Product Description	
Host	Mouse
Gene ID	2064
Gene Symbol	ERBB2
Species	Human, Mouse, Rat
Reactivity Notes	Please note that this antibody is reactive to Mouse and derived from the same host, Mouse. Mouse-On-Mouse blocking reagent may be needed for IHC and ICC experiments to reduce high background signal. You can find these reagents under catalog numbers PK-2200-NB and MP-2400-NB. Please contact Technical Support if you have any questions.
Specificity/Sensitivity	Antibody specificity evaluation by using microarray chip and WB analysis showed that this antibody cross-reacts with CDH1 recombinant protein in overexpression lysates.
Immunogen	Human recombinant protein fragment corresponding to amino acids 676-1255 of human ERBB2(NP_004439) produced in HEK293T cell.
Product Application Details	
Applications	Western Blot, Flow Cytometry, Immunocytochemistry/ Immunofluorescence, Immunohistochemistry, Immunohistochemistry-Paraffin, Immunohistochemistry Whole-Mount
Recommended Dilutions	Western Blot 1:2000, Flow Cytometry 1:100, Immunohistochemistry 1:150, Immunocytochemistry/ Immunofluorescence 1:100, Immunohistochemistry-Paraffin 1:150, Immunohistochemistry Whole-Mount Reported in scientific literature (PMID:34944780)

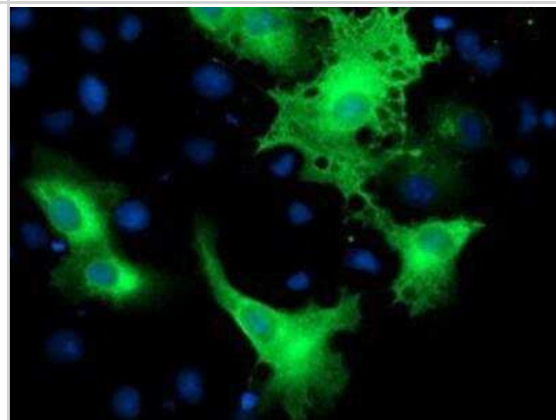


Images

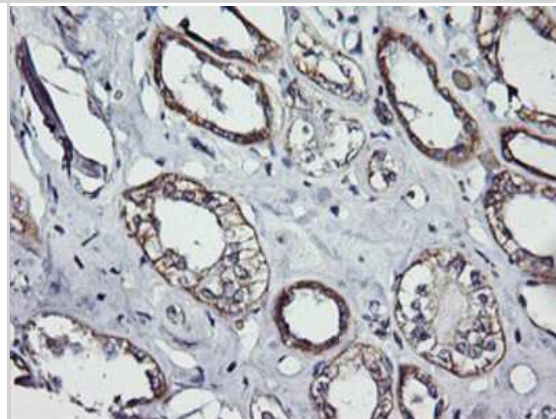
Western Blot: ErbB2/Her2 Antibody (OTI4F10) [NBP2-01152] - Analysis of extracts (35ug) from 2 different Human cell lines, dilution (1:500).



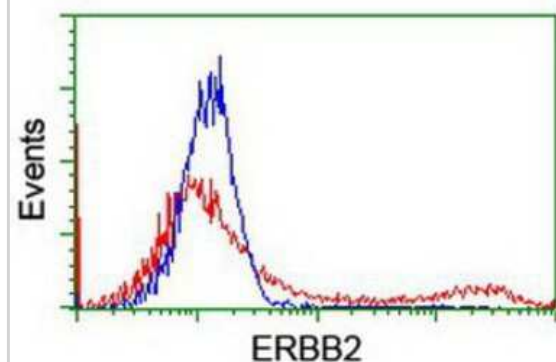
Immunocytochemistry/Immunofluorescence: ErbB2/Her2 Antibody (OTI4F10) [NBP2-01152] - Staining of COS7 cells transiently transfected by pCMV6-ENTRY ErbB2/HER2.



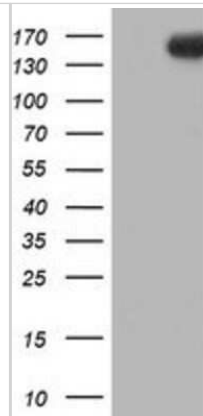
Immunohistochemistry-Paraffin: ErbB2/HER2 Antibody (4F10) [NBP2-01152] - Staining of paraffin-embedded Human Kidney tissue using anti-ErbB2/HER2 mouse monoclonal antibody.



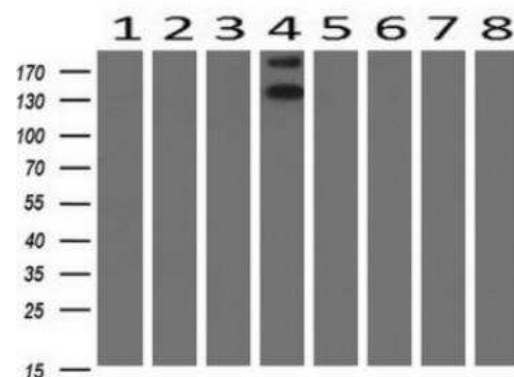
Flow Cytometry: ErbB2/HER2 Antibody (4F10) [NBP2-01152] - HEK293T cells transfected with either overexpression plasmid (Red) or empty vector control plasmid (Blue) were immunostained by anti-ErbB2/HER2 antibody, and then analyzed by flow cytometry.



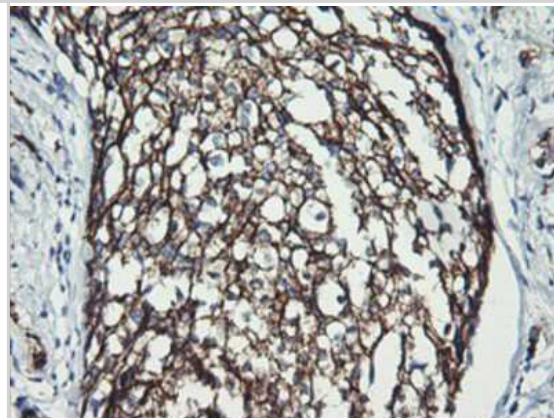
Western Blot: ErbB2/HER2 Antibody (4F10) [NBP2-01152] - HEK293T cells were transfected with the pCMV6-ENTRY control (Left lane) or pCMV6-ENTRY ErbB2/HER2 (Right lane) cDNA for 48 hrs and lysed. Equivalent amounts of cell lysates (5 ug per lane) were separated by SDS-PAGE and immunoblotted with anti-ErbB2/HER2.



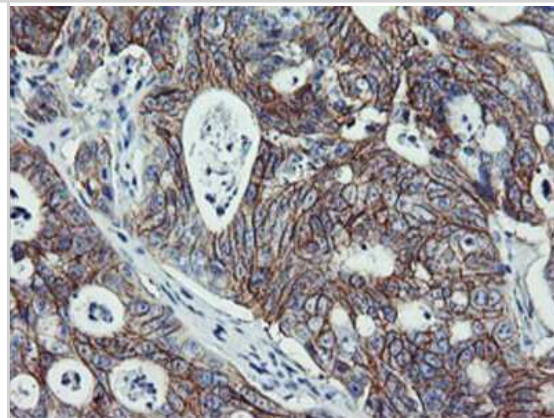
Western Blot: ErbB2/HER2 Antibody (4F10) [NBP2-01152] - 1: Testis; 2: Uterus; 3: Breast; 4: Brain; 5: Liver; 6: Ovary; 7: Thyroid gland; 8: Colon.



Immunohistochemistry-Paraffin: ErbB2/HER2 Antibody (4F10) [NBP2-01152] - Staining of paraffin-embedded Adenocarcinoma of Human breast tissue using anti-ErbB2/HER2 mouse monoclonal antibody.



Immunohistochemistry-Paraffin: ErbB2/HER2 Antibody (4F10) [NBP2-01152] - Staining of paraffin-embedded Carcinoma of Human pancreas tissue using anti-ErbB2/HER2 mouse monoclonal antibody.



Publications

Chakrabarti J, Koh V, Steele N et al. Disruption of Her2-Induced PD-L1 Inhibits Tumor Cell Immune Evasion in Patient-Derived Gastric Cancer Organoids Cancers 2021-12-07 [PMID: 34944780] (IHC-WhMt, Human)



Novus Biologicals USA

10730 E. Briarwood Avenue
Centennial, CO 80112
USA
Phone: 303.730.1950
Toll Free: 1.888.506.6887
Fax: 303.730.1966
nb-customerservice@bio-techne.com

Bio-Techne Canada

21 Canmotor Ave
Toronto, ON M8Z 4E6
Canada
Phone: 905.827.6400
Toll Free: 855.668.8722
Fax: 905.827.6402
canada.inquires@bio-techne.com

Bio-Techne Ltd

19 Barton Lane
Abingdon Science Park
Abingdon, OX14 3NB, United Kingdom
Phone: (44) (0) 1235 529449
Free Phone: 0800 37 34 15
Fax: (44) (0) 1235 533420
info.EMEA@bio-techne.com

General Contact Information

www.novusbio.com
Technical Support: nb-technical@bio-techne.com
Orders: nb-customerservice@bio-techne.com
General: novus@novusbio.com

Products Related to NBP2-01152

HAF007	Goat anti-Mouse IgG Secondary Antibody [HRP]
NB720-B	Rabbit anti-Mouse IgG (H+L) Secondary Antibody [Biotin]
NBP1-96778	Mouse IgG2a Isotype Control (M2A)
NBP2-29624PEP	ErbB2/Her2 Antibody Blocking Peptide

Limitations

This product is for research use only and is not approved for use in humans or in clinical diagnosis. Primary Antibodies are guaranteed for 1 year from date of receipt.

For more information on our 100% guarantee, please visit www.novusbio.com/guarantee

Earn gift cards/discounts by submitting a review: www.novusbio.com/reviews/submit/NBP2-01152

Earn gift cards/discounts by submitting a publication using this product:
www.novusbio.com/publications

