

# Product Datasheet

## eRF1 Antibody (OTI2E3) NBP2-00740

Unit Size: 0.1 ml

Store at -20C. Avoid freeze-thaw cycles.

[www.novusbio.com](http://www.novusbio.com)



[technical@novusbio.com](mailto:technical@novusbio.com)

Protocols, Publications, Related Products, Reviews, Research Tools and Images at:  
[www.novusbio.com/NBP2-00740](http://www.novusbio.com/NBP2-00740)

Updated 10/23/2024 v.20.1

Earn rewards for product  
reviews and publications.

Submit a publication at [www.novusbio.com/publications](http://www.novusbio.com/publications)

Submit a review at [www.novusbio.com/reviews/destination/NBP2-00740](http://www.novusbio.com/reviews/destination/NBP2-00740)



**NBP2-00740**

eRF1 Antibody (OTI2E3)

Product Information	
Unit Size	0.1 ml
Concentration	0.97 mg/ml
Storage	Store at -20C. Avoid freeze-thaw cycles.
Clonality	Monoclonal
Clone	OTI2E3
Preservative	0.02% Sodium Azide
Isotype	IgG2a
Purity	Immunogen affinity purified
Buffer	PBS (pH 7.3), 1.0% BSA and 50% Glycerol
Target Molecular Weight	48.9 kDa

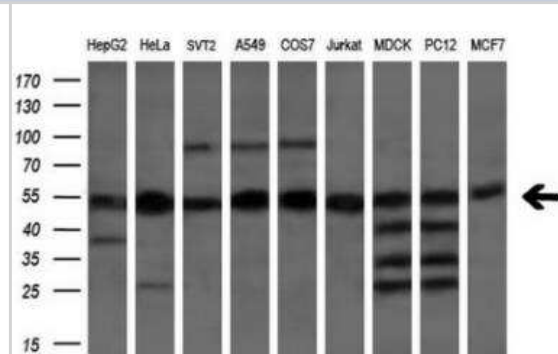
Product Description	
Host	Mouse
Gene ID	2107
Gene Symbol	ETF1
Species	Human, Mouse, Rat, Canine, Monkey
Immunogen	Full length human recombinant protein of human ETF1 (NP_004721) produced in HEK293T cell.

Product Application Details	
Applications	Western Blot, Flow Cytometry
Recommended Dilutions	Western Blot 1:500, Flow Cytometry 1:100

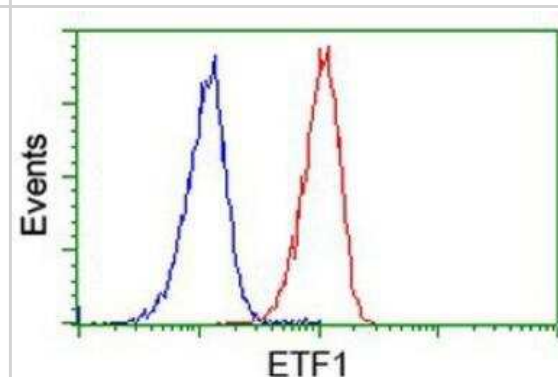


## Images

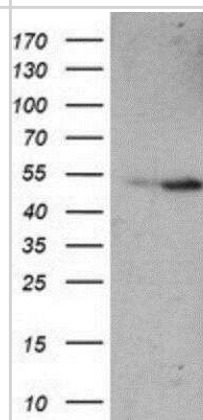
Western Blot: eRF1 Antibody (2E3) [NBP2-00740] - Analysis of extracts (35ug) from 9 different cell lines by using anti-eRF1 monoclonal antibody (HepG2: human; HeLa: human; SVT2: mouse; A549:human; COS7: monkey; Jurkat: human; MDCK: canine; PC12: rat; MCF7: human). (1:200)



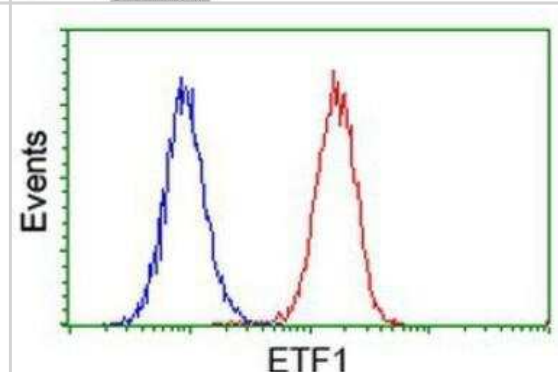
Flow Cytometry: eRF1 Antibody (2E3) [NBP2-00740] - Analysis of Jurkat cells, using anti-eRF1 antibody, (Red), compared to a nonspecific negative control antibody (Blue).



Western Blot: eRF1 Antibody (2E3) [NBP2-00740] - HEK293T cells were transfected with the pCMV6-ENTRY control (Left lane) or pCMV6-ENTRY eRF1 (Right lane) cDNA for 48 hrs and lysed. Equivalent amounts of cell lysates (5 ug per lane) were separated by SDS-PAGE and immunoblotted with anti-eRF1.



Flow Cytometry: eRF1 Antibody (2E3) [NBP2-00740] - Analysis of HeLa cells, using anti-eRF1 antibody, (Red), compared to a nonspecific negative control antibody (Blue).





### **Novus Biologicals USA**

10730 E. Briarwood Avenue  
Centennial, CO 80112  
USA  
Phone: 303.730.1950  
Toll Free: 1.888.506.6887  
Fax: 303.730.1966  
nb-customerservice@bio-techne.com

### **Bio-Techne Canada**

21 Canmotor Ave  
Toronto, ON M8Z 4E6  
Canada  
Phone: 905.827.6400  
Toll Free: 855.668.8722  
Fax: 905.827.6402  
canada.inquires@bio-techne.com

### **Bio-Techne Ltd**

19 Barton Lane  
Abingdon Science Park  
Abingdon, OX14 3NB, United Kingdom  
Phone: (44) (0) 1235 529449  
Free Phone: 0800 37 34 15  
Fax: (44) (0) 1235 533420  
info.EMEA@bio-techne.com

### **General Contact Information**

www.novusbio.com  
Technical Support: nb-technical@bio-techne.com  
Orders: nb-customerservice@bio-techne.com  
General: novus@novusbio.com

### **Products Related to NBP2-00740**

---

HAF007	Goat anti-Mouse IgG Secondary Antibody [HRP]
NB720-B	Rabbit anti-Mouse IgG (H+L) Secondary Antibody [Biotin]
NBP1-96778	Mouse IgG2a Isotype Control (M2A)
H00002107-Q01-10ug	Recombinant Human eRF1 GST (N-Term) Protein

---

### **Limitations**

This product is for research use only and is not approved for use in humans or in clinical diagnosis. Primary Antibodies are guaranteed for 1 year from date of receipt.

For more information on our 100% guarantee, please visit [www.novusbio.com/guarantee](http://www.novusbio.com/guarantee)

Earn gift cards/discounts by submitting a review: [www.novusbio.com/reviews/submit/NBP2-00740](http://www.novusbio.com/reviews/submit/NBP2-00740)

Earn gift cards/discounts by submitting a publication using this product:  
[www.novusbio.com/publications](http://www.novusbio.com/publications)

