

# Product Datasheet

## EB2 Antibody (OTI1F3) NBP2-00714

Unit Size: 0.1 ml

Store at -20C. Avoid freeze-thaw cycles.

[www.novusbio.com](http://www.novusbio.com)



[technical@novusbio.com](mailto:technical@novusbio.com)

Protocols, Publications, Related Products, Reviews, Research Tools and Images at:  
[www.novusbio.com/NBP2-00714](http://www.novusbio.com/NBP2-00714)

Updated 9/9/2025 v.20.1

Earn rewards for product  
reviews and publications.

Submit a publication at [www.novusbio.com/publications](http://www.novusbio.com/publications)

Submit a review at [www.novusbio.com/reviews/destination/NBP2-00714](http://www.novusbio.com/reviews/destination/NBP2-00714)



**NBP2-00714**

EB2 Antibody (OTI1F3)

**Product Information**

|                                |  |
|--------------------------------|--|
| <b>Unit Size</b>               | 0.1 ml                                   |
| <b>Concentration</b>           | 0.81 mg/ml                               |
| <b>Storage</b>                 | Store at -20C. Avoid freeze-thaw cycles. |
| <b>Clonality</b>               | Monoclonal                               |
| <b>Clone</b>                   | OTI1F3                                   |
| <b>Preservative</b>            | 0.02% Sodium Azide                       |
| <b>Isotype</b>                 | IgG2a                                    |
| <b>Purity</b>                  | Immunogen affinity purified              |
| <b>Buffer</b>                  | PBS (pH 7.3), 1.0% BSA and 50% Glycerol  |
| <b>Target Molecular Weight</b> | 36.9 kDa                                 |

**Product Description**

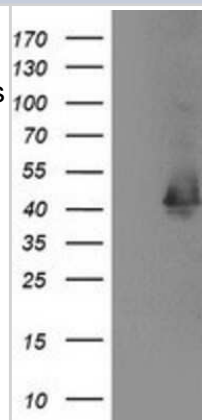
|                    |  |
|--------------------|--|
| <b>Description</b> | Novus Biologicals Mouse EB2 Antibody (OTI1F3) (NBP2-00714) is a monoclonal antibody validated for use in IHC, WB, Flow and ICC/IF. All Novus Biologicals antibodies are covered by our 100% guarantee. |
| <b>Host</b>        | Mouse  |
| <b>Gene ID</b>     | 10982  |
| <b>Gene Symbol</b> | MAPRE2   |
| <b>Species</b>     | Human  |
| <b>Immunogen</b>   | Full length human recombinant protein of human MAPRE2 (NP_055083) produced in HEK293T cell.  |

**Product Application Details**

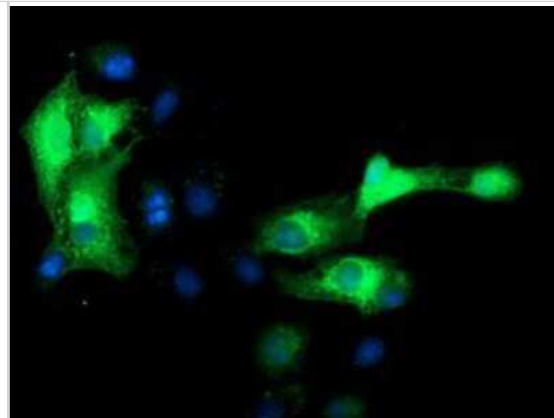
|                              |   |
|------------------------------|---|
| <b>Applications</b>          | Western Blot, Immunohistochemistry-Paraffin, Flow Cytometry, Immunocytochemistry/ Immunofluorescence, Immunohistochemistry                                |
| <b>Recommended Dilutions</b> | Western Blot 1:2000, Flow Cytometry 1:100, Immunohistochemistry 1:150, Immunocytochemistry/ Immunofluorescence 1:100, Immunohistochemistry-Paraffin 1:150 |

**Images**

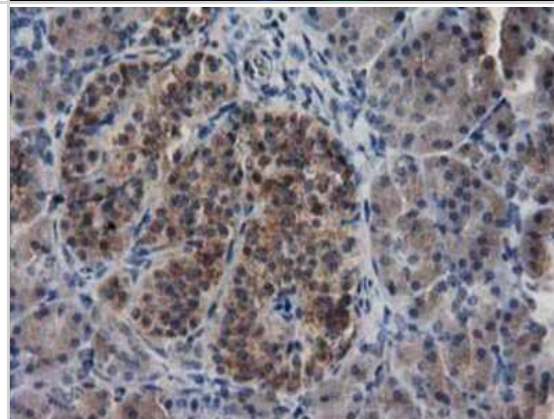
Western Blot: EB2 Antibody (1F3) [NBP2-00714] - HEK293T cells were transfected with the pCMV6-ENTRY control (Left lane) or pCMV6-ENTRY EB2 (Right lane) cDNA for 48 hrs and lysed. Equivalent amounts of cell lysates (5 ug per lane) were separated by SDS-PAGE and immunoblotted with anti-EB2.



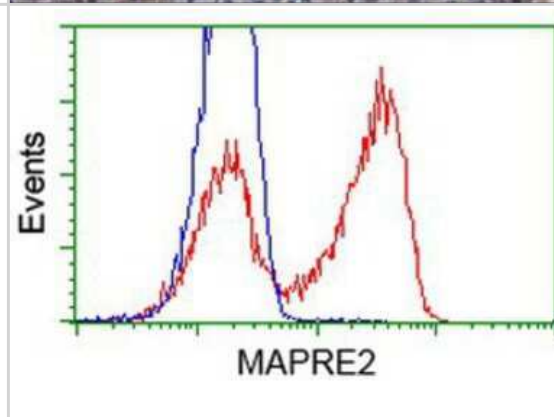
Immunocytochemistry/Immunofluorescence: EB2 Antibody (1F3) [NBP2-00714] Staining of COS7 cells transiently transfected by pCMV6-ENTRY EB2.



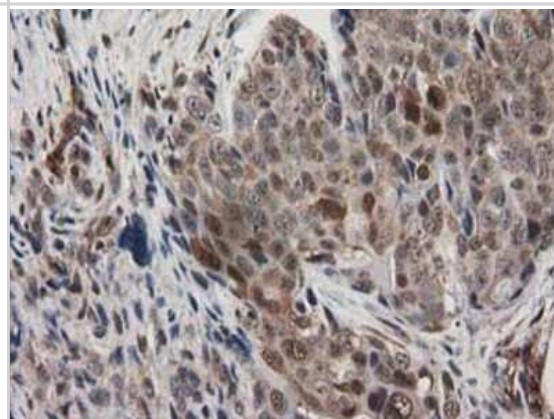
Immunohistochemistry-Paraffin: EB2 Antibody (1F3) [NBP2-00714] - Staining of paraffin-embedded Human pancreas tissue using anti-EB2 mouse monoclonal antibody.



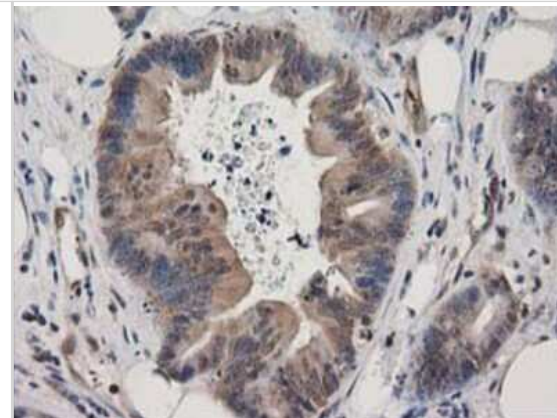
Flow Cytometry: EB2 Antibody (1F3) [NBP2-00714] - HEK293T cells transfected with either overexpression plasmid (Red) or empty vector control plasmid (Blue) were immunostained by anti-EB2 antibody, and then analyzed by flow cytometry.



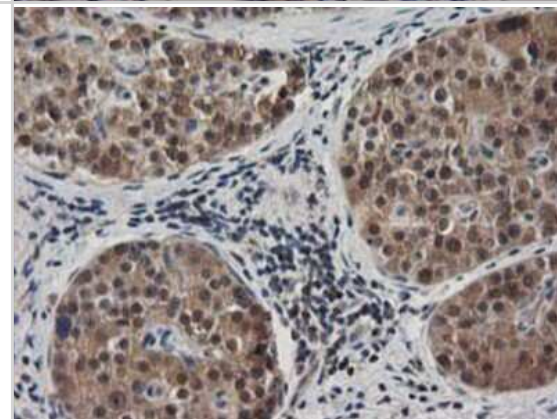
Immunohistochemistry-Paraffin: EB2 Antibody (1F3) [NBP2-00714] - Staining of paraffin-embedded Adenocarcinoma of Human breast tissue using anti-EB2 mouse monoclonal antibody.



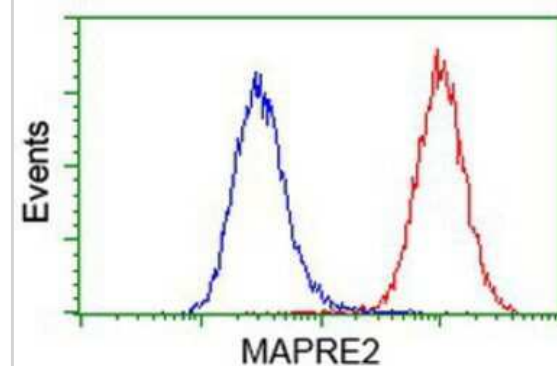
Immunohistochemistry-Paraffin: EB2 Antibody (1F3) [NBP2-00714] - Staining of paraffin-embedded Adenocarcinoma of Human colon tissue using anti-EB2 mouse monoclonal antibody.



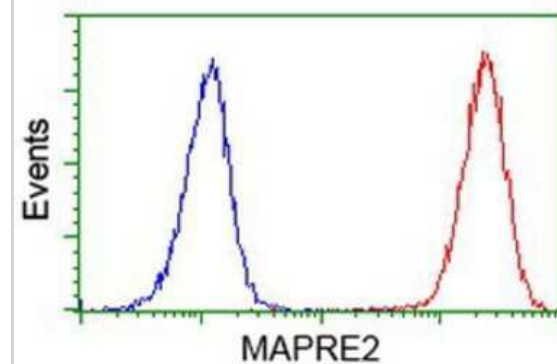
Immunohistochemistry-Paraffin: EB2 Antibody (1F3) [NBP2-00714] - Staining of paraffin-embedded Carcinoma of Human pancreas tissue using anti-EB2 mouse monoclonal antibody.



Flow Cytometry: EB2 Antibody (1F3) [NBP2-00714] - Analysis of Hela cells, using anti-EB2 antibody, (Red), compared to a nonspecific negative control antibody (Blue).



Flow Cytometry: EB2 Antibody (1F3) [NBP2-00714] - Analysis of Jurkat cells, using anti-EB2 antibody, (Red), compared to a nonspecific negative control antibody (Blue).





### **Novus Biologicals USA**

10730 E. Briarwood Avenue  
Centennial, CO 80112  
USA  
Phone: 303.730.1950  
Toll Free: 1.888.506.6887  
Fax: 303.730.1966  
nb-customerservice@bio-techne.com

### **Bio-Techne Canada**

21 Canmotor Ave  
Toronto, ON M8Z 4E6  
Canada  
Phone: 905.827.6400  
Toll Free: 855.668.8722  
Fax: 905.827.6402  
canada.inquires@bio-techne.com

### **Bio-Techne Ltd**

19 Barton Lane  
Abingdon Science Park  
Abingdon, OX14 3NB, United Kingdom  
Phone: (44) (0) 1235 529449  
Free Phone: 0800 37 34 15  
Fax: (44) (0) 1235 533420  
info.EMEA@bio-techne.com

### **General Contact Information**

www.novusbio.com  
Technical Support: nb-technical@bio-techne.com  
Orders: nb-customerservice@bio-techne.com  
General: novus@novusbio.com

### **Products Related to NBP2-00714**

---

|                  |   |
|------------------|---|
| HAF007           | Goat anti-Mouse IgG Secondary Antibody [HRP]            |
| NB720-B          | Rabbit anti-Mouse IgG (H+L) Secondary Antibody [Biotin] |
| NBP1-96778       | Mouse IgG2a Isotype Control (M2A)                       |
| NBP1-72455-100ug | Recombinant Human EB2 His Protein                       |

---

### **Limitations**

This product is for research use only and is not approved for use in humans or in clinical diagnosis. Primary Antibodies are guaranteed for 1 year from date of receipt.

For more information on our 100% guarantee, please visit [www.novusbio.com/guarantee](http://www.novusbio.com/guarantee)

Earn gift cards/discounts by submitting a review: [www.novusbio.com/reviews/submit/NBP2-00714](http://www.novusbio.com/reviews/submit/NBP2-00714)

Earn gift cards/discounts by submitting a publication using this product:  
[www.novusbio.com/publications](http://www.novusbio.com/publications)

