

Product Datasheet

MEF2C Antibody (OT11H5)

NBP2-00493

Unit Size: 0.1 ml

Store at -20C. Avoid freeze-thaw cycles.

www.novusbio.com



technical@novusbio.com

Publications: 3

Protocols, Publications, Related Products, Reviews, Research Tools and Images at:
www.novusbio.com/NBP2-00493

Updated 10/23/2024 v.20.1

Earn rewards for product
reviews and publications.

Submit a publication at www.novusbio.com/publications

Submit a review at www.novusbio.com/reviews/destination/NBP2-00493



NBP2-00493

MEF2C Antibody (OTI1H5)

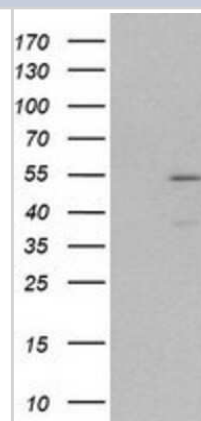
Product Information	
Unit Size	0.1 ml
Concentration	1 mg/ml
Storage	Store at -20C. Avoid freeze-thaw cycles.
Clonality	Monoclonal
Clone	OTI1H5
Preservative	0.02% Sodium Azide
Isotype	IgG1
Purity	Immunogen affinity purified
Buffer	PBS (pH 7.3), 1.0% BSA and 50% Glycerol
Target Molecular Weight	51 kDa

Product Description	
Host	Mouse
Gene ID	4208
Gene Symbol	MEF2C
Species	Human, Mouse, Rat
Reactivity Notes	Please note that this antibody is reactive to Mouse and derived from the same host, Mouse. Mouse-On-Mouse blocking reagent may be needed for IHC and ICC experiments to reduce high background signal. You can find these reagents under catalog numbers PK-2200-NB and MP-2400-NB. Please contact Technical Support if you have any questions.
Immunogen	Full length human recombinant protein of human MEF2C (NP_002388) produced in HEK293T cell.

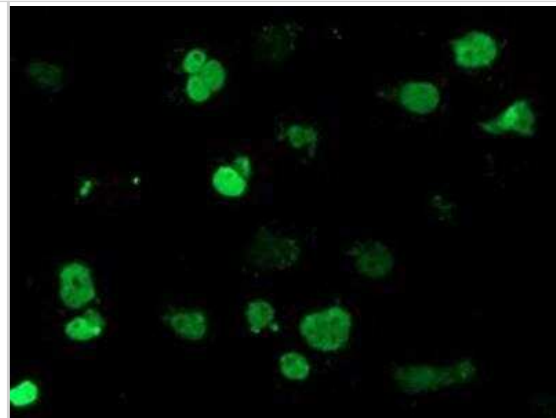
Product Application Details	
Applications	Western Blot, Flow Cytometry, Immunocytochemistry/ Immunofluorescence, Immunohistochemistry, Immunohistochemistry-Paraffin
Recommended Dilutions	Western Blot 1:2000, Flow Cytometry 1:100, Immunohistochemistry 1:150, Immunocytochemistry/ Immunofluorescence 1:100, Immunohistochemistry-Paraffin 1:150

Images

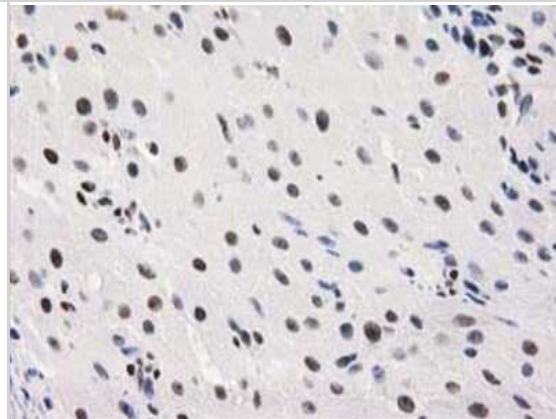
Western Blot: MEF2C Antibody (1H5) [NBP2-00493] - HEK293T cells were transfected with the pCMV6-ENTRY control (Left lane) or pCMV6-ENTRY MEF2C (Right lane) cDNA for 48 hrs and lysed. Equivalent amounts of cell lysates (5 ug per lane) were separated by SDS-PAGE and immunoblotted with anti-MEF2C.



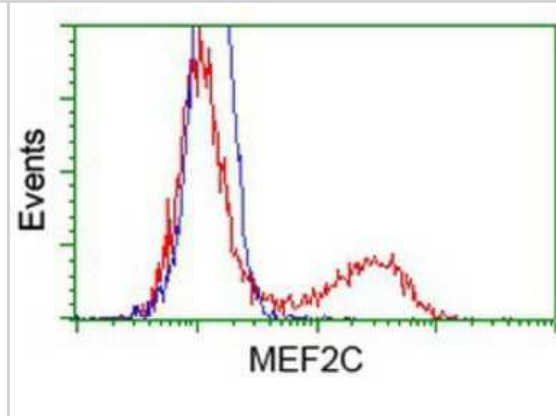
Immunocytochemistry/Immunofluorescence: MEF2C Antibody (OT11H5) [NBP2-00493] - MEF2C Antibody (1H5) [NBP2-00493] - Staining of COS7 cells transiently transfected by pCMV6-ENTRY MEF2C.



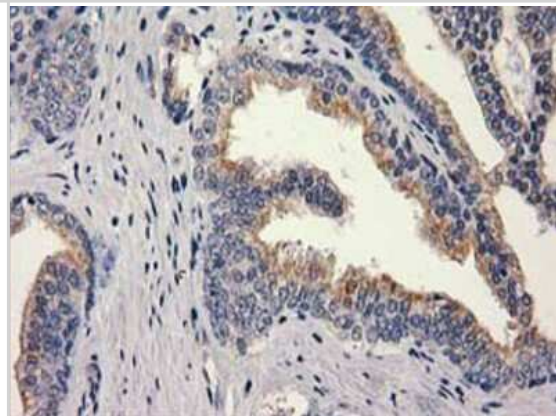
Immunohistochemistry-Paraffin: MEF2C Antibody (1H5) [NBP2-00493] - Staining of paraffin-embedded Human Ovary tissue using anti-MEF2C mouse monoclonal antibody.



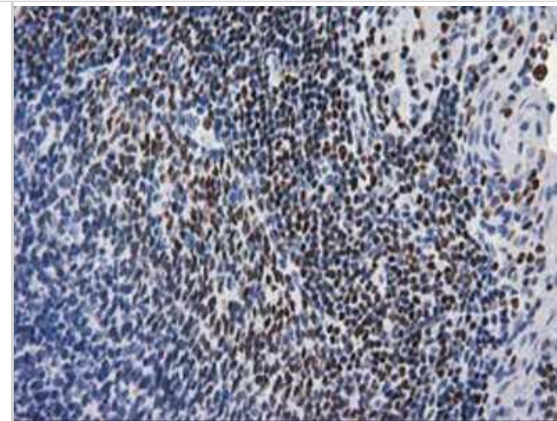
Flow Cytometry: MEF2C Antibody (1H5) [NBP2-00493] - HEK293T cells transfected with either overexpression plasmid (Red) or empty vector control plasmid (Blue) were immunostained by anti-MEF2C antibody, and then analyzed by flow cytometry.



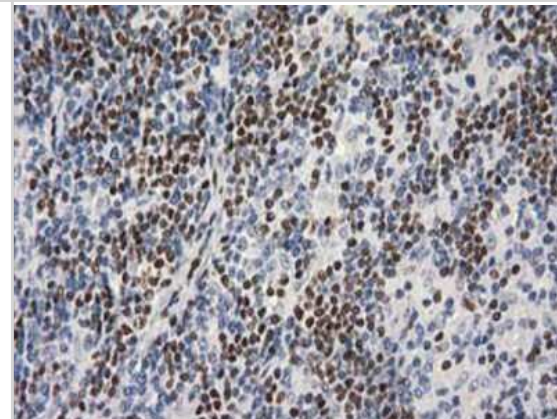
Immunohistochemistry-Paraffin: MEF2C Antibody (1H5) [NBP2-00493] - Staining of paraffin-embedded Carcinoma of Human prostate tissue using anti-MEF2C mouse monoclonal antibody.



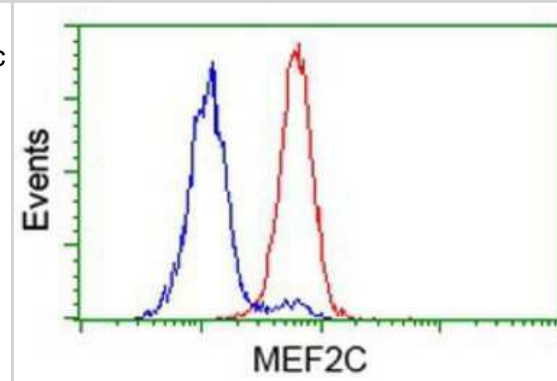
Immunohistochemistry-Paraffin: MEF2C Antibody (1H5) [NBP2-00493] - Staining of paraffin-embedded Human lymph node tissue using anti-MEF2C mouse monoclonal antibody.



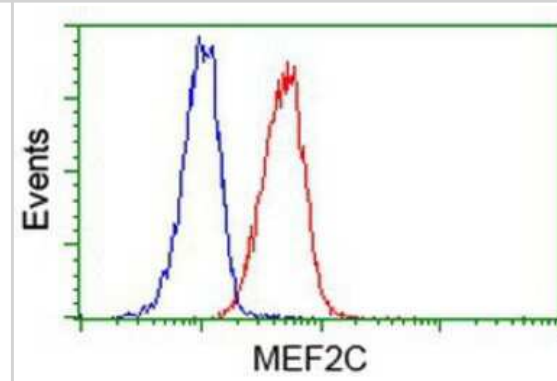
Immunohistochemistry-Paraffin: MEF2C Antibody (1H5) [NBP2-00493] - Staining of paraffin-embedded Human lymphoma tissue using anti-MEF2C mouse monoclonal antibody.



Flow Cytometry: MEF2C Antibody (1H5) [NBP2-00493] - Analysis of HeLa cells, using anti-MEF2C antibody, (Red), compared to a nonspecific negative control antibody (Blue).



Flow Cytometry: MEF2C Antibody (1H5) [NBP2-00493] - Analysis of Jurkat cells, using anti-MEF2C antibody, (Red), compared to a nonspecific negative control antibody (Blue).



Publications

Bjorness TE, Kulkarni A, Rybalchenko V et al. An essential role for MEF2C in the cortical response to loss of sleep in mice eLife 2020-08-27 [PMID: 32851972] (Immunoprecipitation, Block/Neutralize)

Mossink B, van Rhijn JR, Wang S, van Hugte E Cadherin-13 is a critical regulator of GABAergic modulation in human stem cell derived neuronal networks Mol Psychiatry 2021-05-11 [PMID: 33972691]

Deczkowska A, Matcovitch-Natan O, Tsitsou-Kampeli A et al. Mef2C restrains microglial inflammatory response and is lost in brain ageing in an IFN-I-dependent manner. Nat Commun. 2017-09-28 [PMID: 28959042] (IHC-P, Human)





Novus Biologicals USA

10730 E. Briarwood Avenue
Centennial, CO 80112
USA
Phone: 303.730.1950
Toll Free: 1.888.506.6887
Fax: 303.730.1966
nb-customerservice@bio-techne.com

Bio-Techne Canada

21 Canmotor Ave
Toronto, ON M8Z 4E6
Canada
Phone: 905.827.6400
Toll Free: 855.668.8722
Fax: 905.827.6402
canada.inquires@bio-techne.com

Bio-Techne Ltd

19 Barton Lane
Abingdon Science Park
Abingdon, OX14 3NB, United Kingdom
Phone: (44) (0) 1235 529449
Free Phone: 0800 37 34 15
Fax: (44) (0) 1235 533420
info.EMEA@bio-techne.com

General Contact Information

www.novusbio.com
Technical Support: nb-technical@bio-techne.com
Orders: nb-customerservice@bio-techne.com
General: novus@novusbio.com

Products Related to NBP2-00493

HAF007	Goat anti-Mouse IgG Secondary Antibody [HRP]
NB720-B	Rabbit anti-Mouse IgG (H+L) Secondary Antibody [Biotin]
NBP1-97005-0.5mg	Mouse IgG1 Isotype Control (MG1)
NBP1-89468PEP	MEF2C Recombinant Protein Antigen

Limitations

This product is for research use only and is not approved for use in humans or in clinical diagnosis. Primary Antibodies are guaranteed for 1 year from date of receipt.

For more information on our 100% guarantee, please visit www.novusbio.com/guarantee

Earn gift cards/discounts by submitting a review: www.novusbio.com/reviews/submit/NBP2-00493

Earn gift cards/discounts by submitting a publication using this product:
www.novusbio.com/publications

