

# Product Datasheet

## Ly-6G/Ly-6C Antibody (RB6-8C5) [PE] NBP2-00441PE

Unit Size: 0.1 ml

Store at 4C. Do not freeze.

[www.novusbio.com](http://www.novusbio.com)



[technical@novusbio.com](mailto:technical@novusbio.com)

Protocols, Publications, Related Products, Reviews, Research Tools and Images at:  
[www.novusbio.com/NBP2-00441PE](http://www.novusbio.com/NBP2-00441PE)

Updated 10/23/2024 v.20.1

Earn rewards for product  
reviews and publications.

Submit a publication at [www.novusbio.com/publications](http://www.novusbio.com/publications)

Submit a review at [www.novusbio.com/reviews/destination/NBP2-00441PE](http://www.novusbio.com/reviews/destination/NBP2-00441PE)



**NBP2-00441PE**

Ly-6G/Ly-6C Antibody (RB6-8C5) [PE]

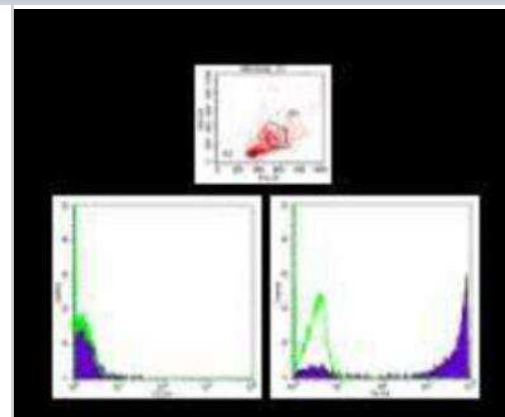
Product Information	
Unit Size	0.1 ml
Concentration	Please see the vial label for concentration. If unlisted please contact technical services.
Storage	Store at 4C. Do not freeze.
Clonality	Monoclonal
Clone	RB6-8C5
Preservative	0.05% Sodium Azide
Isotype	IgG2b Kappa
Conjugate	PE
Purity	Protein A or G purified
Buffer	PBS

Product Description	
Host	Rat
Gene ID	546644
Gene Symbol	Ly6g
Species	Mouse
Reactivity Notes	Use in Mouse reported in scientific literature (PMID:34449927).
Specificity/Sensitivity	Studies indicate that in the bone marrow and lysed whole blood, the antibody clone RB6-8C5 also reacts with an additional subpopulation of Ly-6C high cells.
Immunogen	Normal mouse bone marrow.

Product Application Details	
Applications	Western Blot, Flow Cytometry, Immunocytochemistry/ Immunofluorescence, Immunohistochemistry, Immunohistochemistry-Frozen, Immunohistochemistry-Paraffin, In vivo assay, Immunoprecipitation, CyTOF-ready
Recommended Dilutions	Western Blot, Flow Cytometry, Immunohistochemistry, Immunocytochemistry/ Immunofluorescence, Immunoprecipitation, Immunohistochemistry-Paraffin, Immunohistochemistry-Frozen, In vivo assay, CyTOF-ready
Application Notes	Optimal dilution of this antibody should be experimentally determined.

**Images**

Flow Cytometry: Ly-6G/Ly-6C Antibody (RB6-8C5) [NBP2-00441PE] - Total BALB/c bone marrow cell suspension was stained with Anti-Mouse Ly-6G (Gr-1) PE. Viable cells were gated on lymphoid (R2) and myeloid (R3) populations based on their scatter. Restricted expression of Ly-6G by myeloid lineage (B) and not by lymphoid lineage (A) is demonstrated. Green histograms are autofluorescence of bone marrow cells.





### **Novus Biologicals USA**

10730 E. Briarwood Avenue  
Centennial, CO 80112  
USA  
Phone: 303.730.1950  
Toll Free: 1.888.506.6887  
Fax: 303.730.1966  
nb-customerservice@bio-techne.com

### **Bio-Techne Canada**

21 Canmotor Ave  
Toronto, ON M8Z 4E6  
Canada  
Phone: 905.827.6400  
Toll Free: 855.668.8722  
Fax: 905.827.6402  
canada.inquires@bio-techne.com

### **Bio-Techne Ltd**

19 Barton Lane  
Abingdon Science Park  
Abingdon, OX14 3NB, United Kingdom  
Phone: (44) (0) 1235 529449  
Free Phone: 0800 37 34 15  
Fax: (44) (0) 1235 533420  
info.EMEA@bio-techne.com

### **General Contact Information**

www.novusbio.com  
Technical Support: nb-technical@bio-techne.com  
Orders: nb-customerservice@bio-techne.com  
General: novus@novusbio.com

### **Products Related to NBP2-00441PE**

---

NBP1-43323PE	Rat IgG2b Kappa Light Chain Isotype Control (149/10H5) [PE]
210-TA-005	TNF-alpha [Unconjugated]
M6000B-1	IL-6 [HRP]
6507-IL-010/CF	IL-4 [Unconjugated]

---

### **Limitations**

This product is for research use only and is not approved for use in humans or in clinical diagnosis. Primary Antibodies are guaranteed for 1 year from date of receipt.

For more information on our 100% guarantee, please visit [www.novusbio.com/guarantee](http://www.novusbio.com/guarantee)

Earn gift cards/discounts by submitting a review: [www.novusbio.com/reviews/submit/NBP2-00441PE](http://www.novusbio.com/reviews/submit/NBP2-00441PE)

Earn gift cards/discounts by submitting a publication using this product:  
[www.novusbio.com/publications](http://www.novusbio.com/publications)

