

# Product Datasheet

## phycoerythrin Antibody (PE-DLF) [Biotin] NBP2-00145-100ug

Unit Size: 100 ug

Store at 4C in the dark.

[www.novusbio.com](http://www.novusbio.com)



[technical@novusbio.com](mailto:technical@novusbio.com)

Protocols, Publications, Related Products, Reviews, Research Tools and Images at:  
[www.novusbio.com/NBP2-00145](http://www.novusbio.com/NBP2-00145)

Updated 10/23/2024 v.20.1

Earn rewards for product  
reviews and publications.

Submit a publication at [www.novusbio.com/publications](http://www.novusbio.com/publications)

Submit a review at [www.novusbio.com/reviews/destination/NBP2-00145](http://www.novusbio.com/reviews/destination/NBP2-00145)



**NBP2-00145-100ug**

phycoerythrin Antibody (PE-DLF) [Biotin]

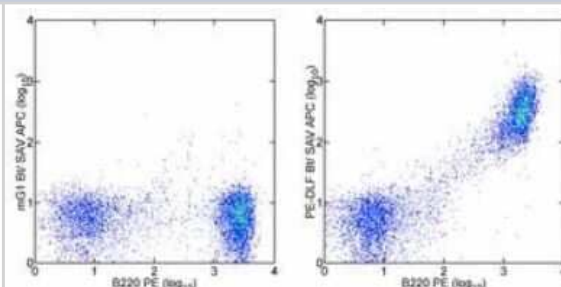
Product Information	
Unit Size	100 ug
Concentration	0.5 mg/ml
Storage	Store at 4C in the dark.
Clonality	Monoclonal
Clone	PE-DLF
Preservative	0.09% Sodium Azide
Isotype	IgG1 Kappa
Conjugate	Biotin
Purity	Protein A or G purified
Buffer	PBS (pH 7.2) with 0.1% gelatin

Product Description	
Host	Mouse
Species	Non-species specific
Immunogen	The immunogen for this antibody is Phycoerythrin.

Product Application Details	
Applications	Flow Cytometry, Immunocytochemistry/ Immunofluorescence, Immunohistochemistry
Recommended Dilutions	Flow Cytometry 1:10-1:1000, Immunohistochemistry 1:10-1:500, Immunocytochemistry/ Immunofluorescence 1:10-1:500
Application Notes	This PE-DLF antibody has been tested by flow cytometric analysis. This can be used at less than or equal to 0.125 ug per test. A test is defined as the amount (ug) of antibody that will stain a cell sample in a final volume of 100 uL. Cell number should be determined empirically but can range from 10 <sup>5</sup> to 10 <sup>8</sup> cells/test. It is recommended that the antibody be carefully titrated for optimal performance in the assay of interest.

**Images**

Flow Cytometry: phycoerythrin Antibody (PE-DLF) [Biotin] [NBP2-00145]  
 - Staining of C57BL/6 splenocytes with Anti Human/Mouse CD45R (B220) PE and 0.06 ug of Mouse IgG1 kappa Isotype Control Biotin (left) or 0.06 ug of Anti-Phycoerythrin Biotin (right) followed by Streptavidin APC . Total viable cells were used for analysis.





### **Novus Biologicals USA**

10730 E. Briarwood Avenue  
Centennial, CO 80112  
USA  
Phone: 303.730.1950  
Toll Free: 1.888.506.6887  
Fax: 303.730.1966  
nb-customerservice@bio-techne.com

### **Bio-Techne Canada**

21 Canmotor Ave  
Toronto, ON M8Z 4E6  
Canada  
Phone: 905.827.6400  
Toll Free: 855.668.8722  
Fax: 905.827.6402  
canada.inquires@bio-techne.com

### **Bio-Techne Ltd**

19 Barton Lane  
Abingdon Science Park  
Abingdon, OX14 3NB, United Kingdom  
Phone: (44) (0) 1235 529449  
Free Phone: 0800 37 34 15  
Fax: (44) (0) 1235 533420  
info.EMEA@bio-techne.com

### **General Contact Information**

www.novusbio.com  
Technical Support: nb-technical@bio-techne.com  
Orders: nb-customerservice@bio-techne.com  
General: novus@novusbio.com

### **Products Related to NBP2-00145-100ug**

---

NBP2-29370	Streptavidin Native Protein
IC002B	Mouse IgG1 Isotype Control (11711) [Biotin]

---

### **Limitations**

This product is for research use only and is not approved for use in humans or in clinical diagnosis. Primary Antibodies are guaranteed for 1 year from date of receipt.

For more information on our 100% guarantee, please visit [www.novusbio.com/guarantee](http://www.novusbio.com/guarantee)

Earn gift cards/discounts by submitting a review: [www.novusbio.com/reviews/submit/NBP2-00145](http://www.novusbio.com/reviews/submit/NBP2-00145)

Earn gift cards/discounts by submitting a publication using this product:  
[www.novusbio.com/publications](http://www.novusbio.com/publications)

