

# Product Datasheet

## Recombinant Human CHMP1B His Protein NBP1-98957-20ug

Unit Size: 20 ug

Store at 4C short term. Aliquot and store at -20C long term. Avoid freeze-thaw cycles.

[www.novusbio.com](http://www.novusbio.com)



[technical@novusbio.com](mailto:technical@novusbio.com)

Protocols, Publications, Related Products, Reviews, Research Tools and Images at:  
[www.novusbio.com/NBP1-98957](http://www.novusbio.com/NBP1-98957)

Updated 10/23/2024 v.20.1

Earn rewards for product  
reviews and publications.

Submit a publication at [www.novusbio.com/publications](http://www.novusbio.com/publications)

Submit a review at [www.novusbio.com/reviews/destination/NBP1-98957](http://www.novusbio.com/reviews/destination/NBP1-98957)



**NBP1-98957-20ug**

Recombinant Human CHMP1B His Protein

**Product Information**

<b>Unit Size</b>	20 ug
<b>Concentration</b>	0.25 mg/ml
<b>Storage</b>	Store at 4C short term. Aliquot and store at -20C long term. Avoid freeze-thaw cycles.
<b>Preservative</b>	No Preservative
<b>Purity</b>	>85%, by SDS-PAGE
<b>Buffer</b>	20 mM Tris-HCl buffer (pH8.0), 20% glycerol, 0.1 M NaCl, 1 mM DTT
<b>Target Molecular Weight</b>	24.7 kDa

**Product Description**

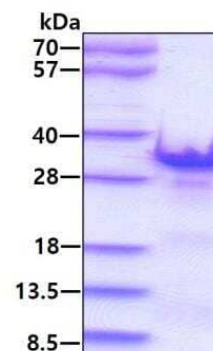
<b>Description</b>	<p>A recombinant protein with a N-Terminal His-tag and corresponding to the amino acids 1-199 of Human CHMP1B</p> <p>Source: E.coli</p> <p>Amino Acid Sequence:  MGSSHHHHHHSSGLVPRGSHMGSHMSNMEKHLFNLKFAAKELSRSAKKCDK  EEKAEEKAKIKKAIQKGNMEVARIHAENAIRQKNQAVNFLRMSARVDAVAARVQT  AVTMGKVTKSMAGVVKSMDATLKTMLNLEKISALMDKFEHQFETLDVQTQQME  DTMSSTTTLTTPQNQVDMLLQEMADEAGLDLNMELPQGQGTGSVGTSVASAEQ  DELSQRLARLRDQV</p>
<b>Gene ID</b>	57132
<b>Gene Symbol</b>	CHMP1B
<b>Species</b>	Human

**Product Application Details**

<b>Applications</b>	SDS-Page
<b>Recommended Dilutions</b>	SDS-Page

**Images**

SDS-Page: Recombinant Human CHMP1B His Protein [NBP1-98957] - 3ug by SDS-PAGE under reducing condition and visualized by coomassie blue stain.





### **Novus Biologicals USA**

10730 E. Briarwood Avenue  
Centennial, CO 80112  
USA  
Phone: 303.730.1950  
Toll Free: 1.888.506.6887  
Fax: 303.730.1966  
nb-customerservice@bio-techne.com

### **Bio-Techne Canada**

21 Canmotor Ave  
Toronto, ON M8Z 4E6  
Canada  
Phone: 905.827.6400  
Toll Free: 855.668.8722  
Fax: 905.827.6402  
canada.inquires@bio-techne.com

### **Bio-Techne Ltd**

19 Barton Lane  
Abingdon Science Park  
Abingdon, OX14 3NB, United Kingdom  
Phone: (44) (0) 1235 529449  
Free Phone: 0800 37 34 15  
Fax: (44) (0) 1235 533420  
info.EMEA@bio-techne.com

### **General Contact Information**

www.novusbio.com  
Technical Support: nb-technical@bio-techne.com  
Orders: nb-customerservice@bio-techne.com  
General: novus@novusbio.com

### **Products Related to NBP1-98957-20ug**

---

H00057132-P01-10ug	Recombinant Human CHMP1B GST (N-Term) Protein
NBP1-33015	SUCLA2 Antibody
NBP2-37986	CHMP1B Antibody
NBP1-32728	SUCLG1 Antibody

---

### **Limitations**

This product is for research use only and is not approved for use in humans or in clinical diagnosis. Peptides and proteins are guaranteed for 3 months from date of receipt.

For more information on our 100% guarantee, please visit [www.novusbio.com/guarantee](http://www.novusbio.com/guarantee)

Earn gift cards/discounts by submitting a review: [www.novusbio.com/reviews/submit/NBP1-98957](http://www.novusbio.com/reviews/submit/NBP1-98957)

Earn gift cards/discounts by submitting a publication using this product:  
[www.novusbio.com/publications](http://www.novusbio.com/publications)

