

Product Datasheet

Integrin beta 1D Antibody (2B1) - BSA Free NBP1-97734

Unit Size: 0.1 mg

Store at 4C short term. Aliquot and store at -20C long term. Avoid freeze-thaw cycles.

www.novusbio.com



technical@novusbio.com

Protocols, Publications, Related Products, Reviews, Research Tools and Images at:
www.novusbio.com/NBP1-97734

Updated 11/1/2024 v.20.1

Earn rewards for product
reviews and publications.

Submit a publication at www.novusbio.com/publications

Submit a review at www.novusbio.com/reviews/destination/NBP1-97734



NBP1-97734

Integrin beta 1D Antibody (2B1) - BSA Free

Product Information	
Unit Size	0.1 mg
Concentration	1 mg/ml
Storage	Store at 4C short term. Aliquot and store at -20C long term. Avoid freeze-thaw cycles.
Clonality	Monoclonal
Clone	2B1
Preservative	0.09% Sodium Azide
Isotype	IgG1
Purity	Protein A or G purified
Buffer	PBS, pH 7.2
Product Description	
Description	The antibody is shipped at ambient temperature and may be stored at 4C. For prolonged storage prepare appropriate aliquots and store at or below -20C. Prior to use, an aliquot is thawed slowly in the dark at ambient temperature, spun down again and used to prepare working dilutions by adding sterile phosphate buffered saline (PBS, pH 7.2). Repeated thawing and freezing should be avoided. Working dilutions should be stored at 4C, not refrozen, and preferably used the same day. If a slight precipitation occurs upon storage, this should be removed by centrifugation. It will not affect the performance or the concentration of the product.
Host	Mouse
Gene ID	3688
Gene Symbol	ITGB1
Species	Human, Mouse, Porcine, Canine
Reactivity Notes	A broad species reactivity is expected based on the conserved nature of the epitope Please note that this antibody is reactive to Mouse and derived from the same host, Mouse. Additional Mouse on Mouse blocking steps may be required for IHC and ICC experiments. Please contact Technical Support for more information.
Specificity/Sensitivity	This antibody recognizes specifically the cytoplasmic domain of Integrin beta 1D present in cardiac and skeletal muscle.
Immunogen	Derived by fusion of SP2/0 Mouse myeloma cells with spleen cells from a Mouse immunized with a synthetic peptide corresponding to the C-terminal 24 amino acids of Integrin beta 1D including an appending N-terminal cysteine (CQENPIYKS-PINNFKNPNYGRKAGL) coupled to keyhole limpet hemocyanin.
Product Application Details	
Applications	Western Blot, Immunocytochemistry/ Immunofluorescence, Immunohistochemistry, Immunohistochemistry-Frozen
Recommended Dilutions	Western Blot 1:100-1:1000, Immunohistochemistry 1:10-1:500, Immunocytochemistry/ Immunofluorescence 1:10-1:500, Immunohistochemistry-Frozen 1:25-1:200

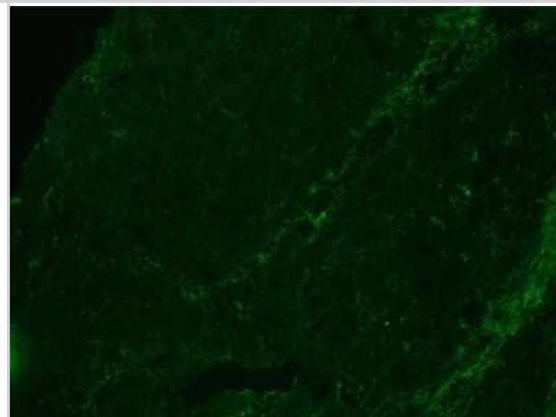


Application Notes

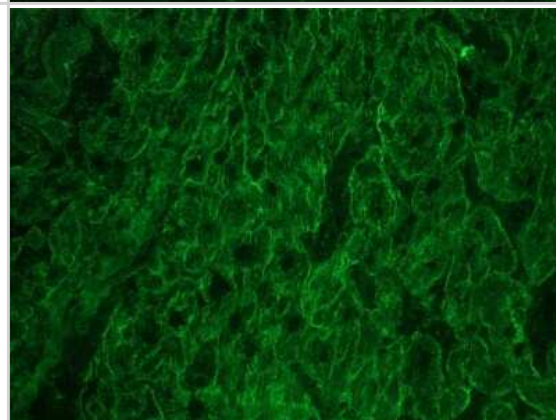
This antibody is suitable for immunoblotting, immunocytochemistry and immunohistochemistry on frozen tissues. Optimal antibody dilution should be determined by titration; recommended range is 1:25 - 1:200 for immunohistochemistry with avidin-biotinylated Horseradish peroxidase complex (ABC) as detection reagent, and 1:100 - 1:1000 for immunoblotting applications.

Images

Immunocytochemistry/Immunofluorescence: Integrin beta 1D Antibody (2B1) [NBP1-97734] - Negative control: only secondary antibody applied.



Immunocytochemistry/Immunofluorescence: Integrin beta 1D Antibody (2B1) [NBP1-97734] - Frozen sections of porcine myocardium immunostained for integrin Beta 1D using a 1:200 dilution of 2B1





Novus Biologicals USA

10730 E. Briarwood Avenue
Centennial, CO 80112
USA
Phone: 303.730.1950
Toll Free: 1.888.506.6887
Fax: 303.730.1966
nb-customerservice@bio-techne.com

Bio-Techne Canada

21 Canmotor Ave
Toronto, ON M8Z 4E6
Canada
Phone: 905.827.6400
Toll Free: 855.668.8722
Fax: 905.827.6402
canada.inquires@bio-techne.com

Bio-Techne Ltd

19 Barton Lane
Abingdon Science Park
Abingdon, OX14 3NB, United Kingdom
Phone: (44) (0) 1235 529449
Free Phone: 0800 37 34 15
Fax: (44) (0) 1235 533420
info.EMEA@bio-techne.com

General Contact Information

www.novusbio.com
Technical Support: nb-technical@bio-techne.com
Orders: nb-customerservice@bio-techne.com
General: novus@novusbio.com

Products Related to NBP1-97734

HAF007	Goat anti-Mouse IgG Secondary Antibody [HRP]
NB720-B	Rabbit anti-Mouse IgG (H+L) Secondary Antibody [Biotin]
NBP1-97005-0.5mg	Mouse IgG1 Isotype Control (MG1)
NBP1-97734UV	Integrin beta 1D Antibody (2B1) [DyLight 350]

Limitations

This product is for research use only and is not approved for use in humans or in clinical diagnosis. Primary Antibodies are guaranteed for 1 year from date of receipt.

For more information on our 100% guarantee, please visit www.novusbio.com/guarantee

Earn gift cards/discounts by submitting a review: www.novusbio.com/reviews/submit/NBP1-97734

Earn gift cards/discounts by submitting a publication using this product:
www.novusbio.com/publications

