

Product Datasheet

Cytokeratin 18 Antibody (RGE53) - BSA Free NBP1-97715

Unit Size: 0.1 mg

Store at 4C short term. Aliquot and store at -20C long term. Avoid freeze-thaw cycles.

www.novusbio.com



technical@novusbio.com

Publications: 3

Protocols, Publications, Related Products, Reviews, Research Tools and Images at:
www.novusbio.com/NBP1-97715

Updated 11/1/2024 v.20.1

Earn rewards for product
reviews and publications.

Submit a publication at www.novusbio.com/publications

Submit a review at www.novusbio.com/reviews/destination/NBP1-97715



NBP1-97715**Cytokeratin 18 Antibody (RGE53) - BSA Free**

Product Information	
Unit Size	0.1 mg
Concentration	1 mg/ml
Storage	Store at 4C short term. Aliquot and store at -20C long term. Avoid freeze-thaw cycles.
Clonality	Monoclonal
Clone	RGE53
Preservative	0.09% Sodium Azide
Isotype	IgG1
Purity	Protein A or G purified
Buffer	PBS, pH 7.2
Product Description	
Description	The antibody is shipped at ambient temperature and may be stored at 4C. For prolonged storage prepare appropriate aliquots and store at or below -20C. Prior to use, an aliquot is thawed slowly in the dark at ambient temperature, spun down again and used to prepare working dilutions by adding sterile phosphate buffered saline (PBS, pH 7.2). Repeated thawing and freezing should be avoided. Working dilutions should be stored at 4C, not refrozen, and preferably used the same day. If a slight precipitation occurs upon storage, this should be removed by centrifugation. It will not affect the performance or the concentration of the product.
Host	Mouse
Gene ID	3875
Gene Symbol	KRT18
Species	Human, Mouse, Rat, Porcine, Canine, Chicken, Guinea Pig, Hamster, Rabbit, Zebrafish
Reactivity Notes	Use in Guinea Pig reported in scientific literature (PMID:10.1186/s40850-021-00074-w). Please note that this antibody is reactive to Mouse and derived from the same host, Mouse. Mouse-On-Mouse blocking reagent may be needed for IHC and ICC experiments to reduce high background signal. You can find these reagents under catalog numbers PK-2200-NB and MP-2400-NB. Please contact Technical Support if you have any questions.
Marker	Epithelial Marker
Specificity/Sensitivity	This antibody reacts exclusively with Cytokeratin 18 which is present in glandular epithelial cells of the digestive, respiratory, and urogenital tracts, endocrine and exocrine cells and mesothelial cells, as well as adenocarcinomas originating from them.
Immunogen	Derived by fusion of SP2/0-Ag14 mouse myeloma cells with spleen cells from a BALB/c mouse immunized with a cytoskeletal preparation of HeLa cells.
Product Application Details	
Applications	Western Blot, Flow Cytometry, Immunocytochemistry/ Immunofluorescence, Immunohistochemistry, Immunohistochemistry-Frozen, CyTOF-ready
Recommended Dilutions	Western Blot 1:100-1:1000, Flow Cytometry 1:10-1:1000, Immunohistochemistry 1:10-1:500, Immunocytochemistry/ Immunofluorescence 1:10-1:500, Immunohistochemistry-Frozen 1:100-1:200, CyTOF-ready

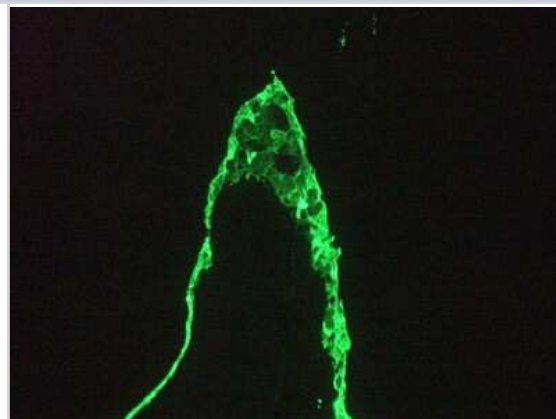
Application Notes

This antibody is suitable for immunoblotting, immunocytochemistry on acetone fixed cells, immunohistochemistry on frozen sections and flow cytometry. Optimal antibody dilution should be determined by titration; recommended range is 1:100 - 1:200 for immunohistochemistry with avidin-biotinylated Horseradish peroxidase complex (ABC) as detection reagent, and 1:100 - 1:1000 for immunoblotting applications.

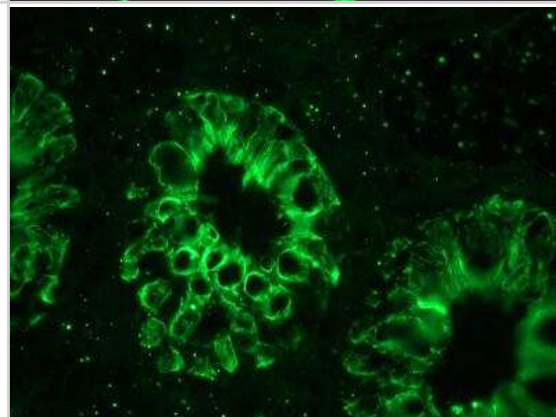
This antibody is CyTOF ready.

Images

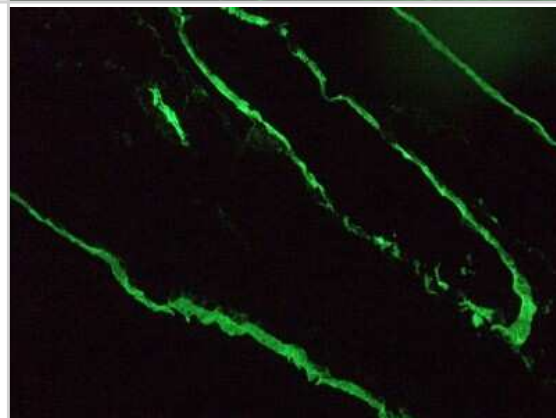
Immunocytochemistry/Immunofluorescence: Cytokeratin 18 Antibody (RGE53) [NBP1-97715] - Staining of 1 month old zebrafish embryo



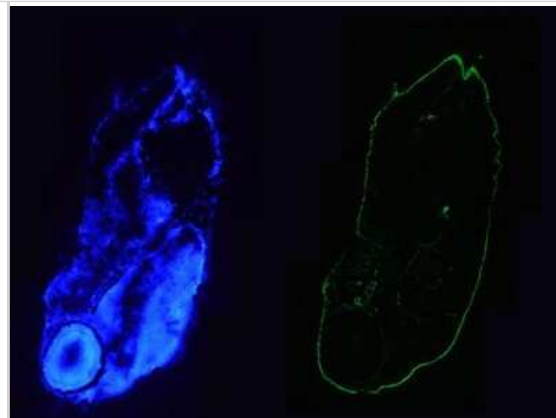
Immunohistochemistry: Cytokeratin 18 Antibody (RGE53) [NBP1-97715] - Immunofluorescence staining of human colon epithelium.



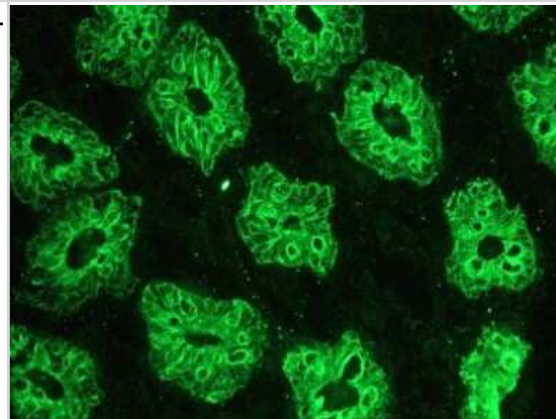
Immunocytochemistry/Immunofluorescence: Cytokeratin 18 Antibody (RGE53) [NBP1-97715] - Staining of a 2 days old zebrafish embryo. Left panel: DAPI-staining of cell nuclei, providing an overview of the tissue section used for immunostaining



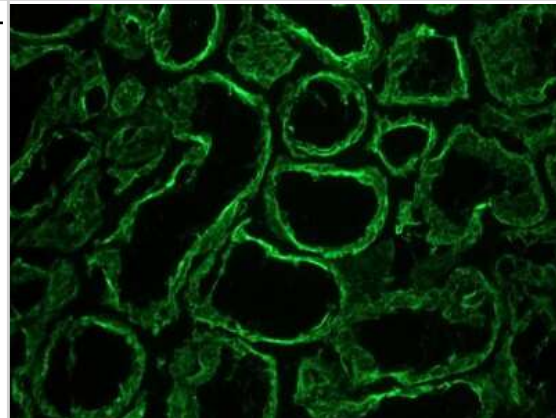
Immunocytochemistry/Immunofluorescence: Cytokeratin 18 Antibody (RGE53) [NBP1-97715] - Staining of a 5 days old zebrafish embryo. Left panel: DAPI-staining of cell nuclei, providing an overview of the tissue section used for immunostaining



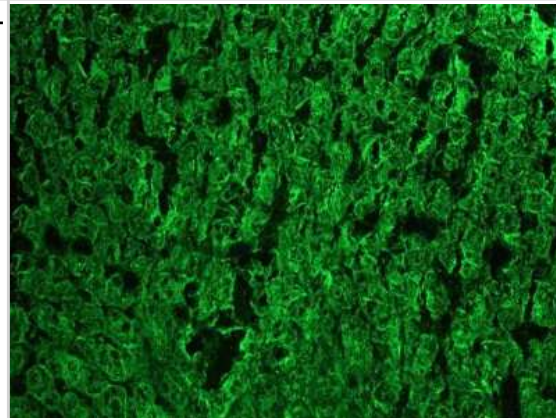
Immunohistochemistry-Frozen: Cytokeratin 18 Antibody (RGE53) [NBP1-97715] - Frozen section of human colon



Immunohistochemistry-Frozen: Cytokeratin 18 Antibody (RGE53) [NBP1-97715] - Frozen section of human kidney epithelium



Immunohistochemistry-Frozen: Cytokeratin 18 Antibody (RGE53) [NBP1-97715] - Frozen section of swine liver hepatocytes



Publications

de SA Schiavo Matias G, Carreira ACO, Batista VF et al. In vivo biocompatibility analysis of the recellularized canine tracheal scaffolds with canine epithelial and endothelial progenitor cells Bioengineered 2022-02-01 [PMID: 35109755] (ICC/IF, Canine)

Miglino M, de SA Schiavo Matias G, Rigoglio N et al. The comparative aspects of hystricomorph subplacenta: potential endocrine organ BMC Zoology 2021-12-01 [PMID: 37170370] (IF/IHC, Guinea Pig)

Li Y, Wu Q, Huang L et al. An alternative pathway of enteric PEDV dissemination from nasal cavity to intestinal mucosa in swine. Nat Commun 2018-09-19 [PMID: 30232333] (FLOW, Porcine)





Novus Biologicals USA

10730 E. Briarwood Avenue
Centennial, CO 80112
USA
Phone: 303.730.1950
Toll Free: 1.888.506.6887
Fax: 303.730.1966
nb-customerservice@bio-techne.com

Bio-Techne Canada

21 Canmotor Ave
Toronto, ON M8Z 4E6
Canada
Phone: 905.827.6400
Toll Free: 855.668.8722
Fax: 905.827.6402
canada.inquires@bio-techne.com

Bio-Techne Ltd

19 Barton Lane
Abingdon Science Park
Abingdon, OX14 3NB, United Kingdom
Phone: (44) (0) 1235 529449
Free Phone: 0800 37 34 15
Fax: (44) (0) 1235 533420
info.EMEA@bio-techne.com

General Contact Information

www.novusbio.com
Technical Support: nb-technical@bio-techne.com
Orders: nb-customerservice@bio-techne.com
General: novus@novusbio.com

Products Related to NBP1-97715

HAF007	Goat anti-Mouse IgG Secondary Antibody [HRP]
NB720-B	Rabbit anti-Mouse IgG (H+L) Secondary Antibody [Biotin]
NBP1-97005-0.5mg	Mouse IgG1 Isotype Control (MG1)
NBP1-97715PE	Cytokeratin 18 Antibody (RGE53) [PE]

Limitations

This product is for research use only and is not approved for use in humans or in clinical diagnosis. Primary Antibodies are guaranteed for 1 year from date of receipt.

For more information on our 100% guarantee, please visit www.novusbio.com/guarantee

Earn gift cards/discounts by submitting a review: www.novusbio.com/reviews/submit/NBP1-97715

Earn gift cards/discounts by submitting a publication using this product:
www.novusbio.com/publications

