

# Product Datasheet

## Integrin beta 3/CD61 Antibody (VIPL2) [mFluor Violet 610 SE] NBP1-97563MFV610

Unit Size: 0.1 ml

Store at 4C in the dark.

[www.novusbio.com](http://www.novusbio.com)



[technical@novusbio.com](mailto:technical@novusbio.com)

Protocols, Publications, Related Products, Reviews, Research Tools and Images at:  
[www.novusbio.com/NBP1-97563MFV610](http://www.novusbio.com/NBP1-97563MFV610)

Updated 9/20/2023 v.20.1

Earn rewards for product  
reviews and publications.

Submit a publication at [www.novusbio.com/publications](http://www.novusbio.com/publications)

Submit a review at [www.novusbio.com/reviews/destination/NBP1-97563MFV610](http://www.novusbio.com/reviews/destination/NBP1-97563MFV610)



**NBP1-97563MFV610**

Integrin beta 3/CD61 Antibody (VIPL2) [mFluor Violet 610 SE]

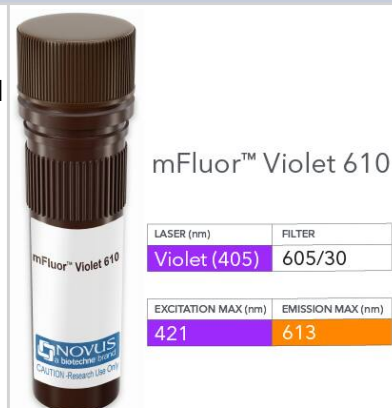
Product Information	
Unit Size	0.1 ml
Concentration	Please see the vial label for concentration. If unlisted please contact technical services.
Storage	Store at 4C in the dark.
Clonality	Monoclonal
Clone	VIPL2
Preservative	0.05% Sodium Azide
Isotype	IgG1 Kappa
Conjugate	mFluor Violet 610 SE
Purity	Protein A purified
Buffer	50mM Sodium Borate

Product Description	
Host	Mouse
Gene ID	3690
Gene Symbol	ITGB3
Species	Human, Primate
Specificity/Sensitivity	The mouse monoclonal antibody VIPL2 recognizes CD61, a 90-110 kDa transmembrane glycoprotein of integrin family, expressed on platelets, megacaryocytes, osteoclasts, endothelial cells and other cell types, including leucocytes and smooth muscle cells.
Immunogen	The mouse monoclonal antibody VIPL2 recognizes CD61

Product Application Details	
Applications	Western Blot, Flow Cytometry, Immunohistochemistry, Immunohistochemistry-Frozen, CyTOF-ready
Recommended Dilutions	Western Blot, Flow Cytometry, Immunohistochemistry, Immunohistochemistry-Frozen, CyTOF-ready
Application Notes	Optimal dilution of this antibody should be experimentally determined.

**Images**

Integrin beta 3/CD61 Antibody (VIPL2) [mFluor Violet 610 SE] [NBP1-97563MFV610] - Vial of mFluor Violet 610 conjugated antibody. mFluor Violet 610 is optimally excited at 421 nm by the Violet laser (405 nm) and has an emission maximum of 613 nm.





### **Novus Biologicals USA**

10730 E. Briarwood Avenue  
Centennial, CO 80112  
USA  
Phone: 303.730.1950  
Toll Free: 1.888.506.6887  
Fax: 303.730.1966  
nb-customerservice@bio-techne.com

### **Bio-Techne Canada**

21 Canmotor Ave  
Toronto, ON M8Z 4E6  
Canada  
Phone: 905.827.6400  
Toll Free: 855.668.8722  
Fax: 905.827.6402  
canada.inquires@bio-techne.com

### **Bio-Techne Ltd**

19 Barton Lane  
Abingdon Science Park  
Abingdon, OX14 3NB, United Kingdom  
Phone: (44) (0) 1235 529449  
Free Phone: 0800 37 34 15  
Fax: (44) (0) 1235 533420  
info.EMEA@bio-techne.com

### **General Contact Information**

www.novusbio.com  
Technical Support: nb-technical@bio-techne.com  
Orders: nb-customerservice@bio-techne.com  
General: novus@novusbio.com

### **Products Related to NBP1-97563MFV610**

---

NBP1-83453PEP	Integrin beta 3/CD61 Recombinant Protein Antigen
210-TA-005	TNF-alpha [Unconjugated]
NBL1-12073	Integrin beta 3/CD61 Overexpression Lysate
137-PS-050	P-Selectin/CD62P

---

### **Limitations**

This product is for research use only and is not approved for use in humans or in clinical diagnosis. Primary Antibodies are guaranteed for 1 year from date of receipt.

For more information on our 100% guarantee, please visit [www.novusbio.com/guarantee](http://www.novusbio.com/guarantee)

Earn gift cards/discounts by submitting a review: [www.novusbio.com/reviews/submit/NBP1-97563MFV610](http://www.novusbio.com/reviews/submit/NBP1-97563MFV610)

Earn gift cards/discounts by submitting a publication using this product:  
[www.novusbio.com/publications](http://www.novusbio.com/publications)

