

Product Datasheet

RCC1 Antibody (3D11) NBP1-97543

Unit Size: 0.1 mg

Store at -20C. Avoid freeze-thaw cycles.

www.novusbio.com



technical@novusbio.com

Protocols, Publications, Related Products, Reviews, Research Tools and Images at:
www.novusbio.com/NBP1-97543

Updated 1/4/2025 v.20.1

Earn rewards for product
reviews and publications.

Submit a publication at www.novusbio.com/publications

Submit a review at www.novusbio.com/reviews/destination/NBP1-97543



NBP1-97543**RCC1 Antibody (3D11)**

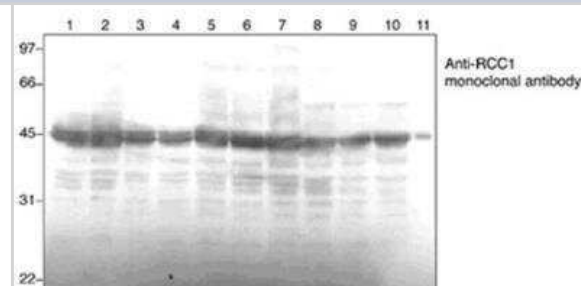
Product Information	
Unit Size	0.1 mg
Concentration	LYOPH mg/ml
Storage	Store at -20C. Avoid freeze-thaw cycles.
Clonality	Monoclonal
Clone	3D11
Preservative	No Preservative
Reconstitution Instructions	Reconstitute with 0.1 ml sterilized distilled water to a final concentration of 1.0 mg/ml.
Isotype	IgG1
Purity	Protein A purified
Buffer	PBS (pH 7.2) and 1.0% Sucrose

Product Description	
Host	Mouse
Gene ID	1104
Gene Symbol	RCC1
Species	Human, Mouse, Rat
Reactivity Notes	Recognizes Human, Mouse and Rat RanGEF. Please note that this antibody is reactive to Mouse and derived from the same host, Mouse. Additional Mouse on Mouse blocking steps may be required for IHC and ICC experiments. Please contact Technical Support for more information.
Immunogen	Recombinant human RanGEF.

Product Application Details	
Applications	Western Blot, Immunocytochemistry/ Immunofluorescence, Immunoprecipitation
Recommended Dilutions	Western Blot 1 ug/ml, Immunocytochemistry/ Immunofluorescence 5 ug/ml, Immunoprecipitation 2 ug/ml
Application Notes	This antibody is useful in Immunocytochemistry, Immunoprecipitation and Western Blot (Detects a band of ~45kDa).

Images

Western Blot: RCC1 Antibody (3D11) [NBP1-97543] - Analysis of RanGEF probed with RanGEF (RCC1), mAb (3D11).





Novus Biologicals USA

10730 E. Briarwood Avenue
Centennial, CO 80112
USA
Phone: 303.730.1950
Toll Free: 1.888.506.6887
Fax: 303.730.1966
nb-customerservice@bio-techne.com

Bio-Techne Canada

21 Canmotor Ave
Toronto, ON M8Z 4E6
Canada
Phone: 905.827.6400
Toll Free: 855.668.8722
Fax: 905.827.6402
canada.inquires@bio-techne.com

Bio-Techne Ltd

19 Barton Lane
Abingdon Science Park
Abingdon, OX14 3NB, United Kingdom
Phone: (44) (0) 1235 529449
Free Phone: 0800 37 34 15
Fax: (44) (0) 1235 533420
info.EMEA@bio-techne.com

General Contact Information

www.novusbio.com
Technical Support: nb-technical@bio-techne.com
Orders: nb-customerservice@bio-techne.com
General: novus@novusbio.com

Limitations

This product is for research use only and is not approved for use in humans or in clinical diagnosis. Primary Antibodies are guaranteed for 1 year from date of receipt.

For more information on our 100% guarantee, please visit www.novusbio.com/guarantee

Earn gift cards/discounts by submitting a review: www.novusbio.com/reviews/submit/NBP1-97543

Earn gift cards/discounts by submitting a publication using this product:
www.novusbio.com/publications

