

# Product Datasheet

## Human IgM Native Protein NBP1-97056-1mg

Unit Size: 1 mg

Store at 4C short term. For extended storage, add an equal volume of glycerol, aliquot and store at -20C or below. Avoid repeated freeze-thaw cycles.

[www.novusbio.com](http://www.novusbio.com)



[technical@novusbio.com](mailto:technical@novusbio.com)

Protocols, Publications, Related Products, Reviews, Research Tools and Images at:  
[www.novusbio.com/NBP1-97056](http://www.novusbio.com/NBP1-97056)

Updated 10/23/2024 v.20.1

Earn rewards for product  
reviews and publications.

Submit a publication at [www.novusbio.com/publications](http://www.novusbio.com/publications)

Submit a review at [www.novusbio.com/reviews/destination/NBP1-97056](http://www.novusbio.com/reviews/destination/NBP1-97056)



**NBP1-97056-1mg**

Human IgM Native Protein

| <b>Product Information</b> |   |
|----------------------------|---|
| <b>Unit Size</b>           | 1 mg  |
| <b>Concentration</b>       | Please see the vial label for concentration. If unlisted please contact technical services.   |
| <b>Storage</b>             | Store at 4C short term. For extended storage, add an equal volume of glycerol, aliquot and store at -20C or below. Avoid repeated freeze-thaw cycles. |
| <b>Preservative</b>        | 0.1% Sodium Azide   |
| <b>Purity</b>              | Multi-step  |
| <b>Buffer</b>              | 0.1 M Tris Chloride, 0.5 M Sodium Chloride, pH 8.0  |

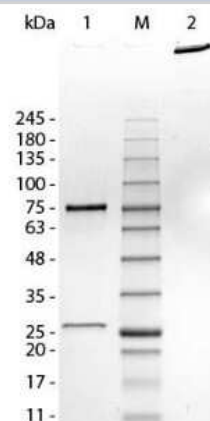
| <b>Product Description</b> |  |
|----------------------------|--|
| <b>Description</b>         | <p>Native Human Human IgM</p> <p>Source: Human serum (Accession #:CAA00084.1)</p> <p>Store vial at 4C prior to opening. This product is stable 4C as an undiluted liquid. Dilute only prior to immediate use. For extended storage mix with an equal volume of glycerol, aliquot contents and freeze at -20C or below. Avoid cycles of freezing and thawing.</p> <p>No test method can provide total assurance that the hepatitis B virus, hepatitis C virus, human immunodeficiency virus, or any other infectious agents are absent. Thus, all blood products, including purified proteins derived from human blood sources, should be handled at Biosafety Level 2 as recommended by the CDC \NIH manual entitled Biosafety in Microbiological and Biomedical Laboratories for potentially infectious human serum, blood specimens or proteins derived from same. Source material for the human blood product supplied to your facility has been tested for the detection of HIV antibody, Hepatitis B surface antigen, antibody to Hepatitis C, HIV 1 antigen(s), antibody to HTLV - I/II, and syphilis by FDA guidelines. All units were found to be non-reactive/negative for these tests. All human blood source material is collected in FDA licensed centers and is tested with FDA approved test kits.</p> |
| <b>Species</b>             | Human  |
| <b>Preparation Method</b>  | This product was prepared from human serum by a multi-step process which includes delipidation, selective precipitation and tandem molecular sieve chromatography followed by extensive dialysis against the buffer stated above. Human IgM (myeloma) whole molecule was assayed by immunoelectrophoresis resulted in a single precipitin arc against anti-Human Serum and anti-Human IgM (u chain specific). No reaction was observed against anti-Human IgG F(c). Some light chain cross-reactivity will occur with anti-Human IgG.  |

| <b>Product Application Details</b> |   |
|------------------------------------|---|
| <b>Applications</b>                | Western Blot, ELISA, Immunohistochemistry, SDS-Page   |
| <b>Recommended Dilutions</b>       | Western Blot 1:100 - 1:2000, ELISA 1:100 - 1:2000, Immunohistochemistry 1:10 - 1:500, SDS-Page  |
| <b>Application Notes</b>           | This product has been tested in SDS-Page and can be used as a control or standard in indirect trapping ELISA for quantitation of antigen in serum using a standard curve, for immunoprecipitation and for western blotting. |



**Images**

SDS-Page: Human IgM Native Protein [NBP1-97056] - IgM Whole Molecule. Lane 1: Human IgM, Reduced. M: Opal Pre-stained Marker. Lane 2: Human IgM, Non-Reduced. Load: 1.0 ug per lane. Predicted/Observed size - Non-Reduced: 900 kDa, Reduced - 75, 25 kDa.





### **Novus Biologicals USA**

10730 E. Briarwood Avenue  
Centennial, CO 80112  
USA  
Phone: 303.730.1950  
Toll Free: 1.888.506.6887  
Fax: 303.730.1966  
nb-customerservice@bio-techne.com

### **Bio-Techne Canada**

21 Canmotor Ave  
Toronto, ON M8Z 4E6  
Canada  
Phone: 905.827.6400  
Toll Free: 855.668.8722  
Fax: 905.827.6402  
canada.inquires@bio-techne.com

### **Bio-Techne Ltd**

19 Barton Lane  
Abingdon Science Park  
Abingdon, OX14 3NB, United Kingdom  
Phone: (44) (0) 1235 529449  
Free Phone: 0800 37 34 15  
Fax: (44) (0) 1235 533420  
info.EMEA@bio-techne.com

### **General Contact Information**

www.novusbio.com  
Technical Support: nb-technical@bio-techne.com  
Orders: nb-customerservice@bio-techne.com  
General: novus@novusbio.com

### **Products Related to NBP1-97056-1mg**

---

|            |                           |
|------------|---------------------------|
| NBP1-78603 | Human IgM Antibody (P5E2) |
|------------|---------------------------|

---

### **Limitations**

This product is for research use only and is not approved for use in humans or in clinical diagnosis. Peptides and proteins are guaranteed for 3 months from date of receipt.

For more information on our 100% guarantee, please visit [www.novusbio.com/guarantee](http://www.novusbio.com/guarantee)

Earn gift cards/discounts by submitting a review: [www.novusbio.com/reviews/submit/NBP1-97056](http://www.novusbio.com/reviews/submit/NBP1-97056)

Earn gift cards/discounts by submitting a publication using this product:  
[www.novusbio.com/publications](http://www.novusbio.com/publications)

