

Product Datasheet

Equine IgM Isotype Control NBP1-96970

Unit Size: 1 mg

Store at 4C short term. For extended storage, add an equal volume of glycerol, aliquot and store at -20C or below. Avoid repeated freeze-thaw cycles.

www.novusbio.com



technical@novusbio.com

Protocols, Publications, Related Products, Reviews, Research Tools and Images at:
www.novusbio.com/NBP1-96970

Updated 10/23/2024 v.20.1

Earn rewards for product
reviews and publications.

Submit a publication at www.novusbio.com/publications

Submit a review at www.novusbio.com/reviews/destination/NBP1-96970



NBP1-96970

Equine IgM Isotype Control

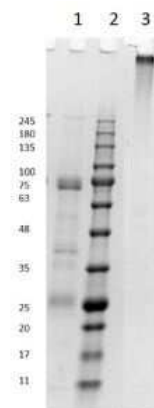
Product Information	
Unit Size	1 mg
Concentration	Please contact technical services for concentration.
Storage	Store at 4C short term. For extended storage, add an equal volume of glycerol, aliquot and store at -20C or below. Avoid repeated freeze-thaw cycles.
Preservative	0.1% Sodium Azide
Isotype	IgM
Purity	Multi-step
Buffer	0.1 M Tris Chloride, 0.5 M Sodium Chloride, pH 8.0

Product Description	
Description	<p>This product was prepared from normal serum by a multi-step process which includes delipidation, selective precipitation and tandem molecular sieve chromatography followed by extensive dialysis against the buffer stated above. Assay by immunoelectrophoresis resulted in a single precipitin arc against anti-Horse Serum and anti-Horse IgM (u chain specific)</p> <p>Store vial at 4C prior to opening. This product is stable 4C as an undiluted liquid. Dilute only prior to immediate use. For extended storage mix with an equal volume of glycerol, aliquot contents and freeze at -20C or below. Avoid cycles of freezing and thawing.</p>
Host	Horse
Gene ID	3507
Gene Symbol	IGHM
Species	Equine
Specificity/Sensitivity	No reaction was observed against anti-Horse IgG F(c). Some light chain cross reactivity will occur with anti-Horse IgG.

Product Application Details	
Applications	Western Blot, ELISA, SDS-Page
Recommended Dilutions	Western Blot, ELISA, SDS-Page
Application Notes	This product has been tested in SDS-Page and can be utilized as a control or standard reagent in Western Blotting and ELISA experiments.

Images

SDS-Page: Equine IgM Isotype Control [NBP1-96970] - SDS PAGE Results Equine IgM isotype control. Lane 1: Horse IgM Reduced 1X. Lane 2: Opal Prestained Molecular Weight Marker. Lane 3: Horse IgM Non-Reduced 1X. 4-20% Gel, Coomassie Stained.





Novus Biologicals USA

10730 E. Briarwood Avenue
Centennial, CO 80112
USA
Phone: 303.730.1950
Toll Free: 1.888.506.6887
Fax: 303.730.1966
nb-customerservice@bio-techne.com

Bio-Techne Canada

21 Canmotor Ave
Toronto, ON M8Z 4E6
Canada
Phone: 905.827.6400
Toll Free: 855.668.8722
Fax: 905.827.6402
canada.inquires@bio-techne.com

Bio-Techne Ltd

19 Barton Lane
Abingdon Science Park
Abingdon, OX14 3NB, United Kingdom
Phone: (44) (0) 1235 529449
Free Phone: 0800 37 34 15
Fax: (44) (0) 1235 533420
info.EMEA@bio-techne.com

General Contact Information

www.novusbio.com
Technical Support: nb-technical@bio-techne.com
Orders: nb-customerservice@bio-techne.com
General: novus@novusbio.com

Products Related to NBP1-96970

H00003507-P01-10ug	Recombinant Human IgM GST (N-Term) Protein
NB100-524	NOD2 Antibody (2D9) - BSA Free
NBP2-34253-0.1mg	IgM Antibody (IM260)
7268-CT-100	CTLA-4 [Unconjugated]

Limitations

This product is for research use only and is not approved for use in humans or in clinical diagnosis. Isotype Controls are guaranteed for 1 year from date of receipt.

For more information on our 100% guarantee, please visit www.novusbio.com/guarantee

Earn gift cards/discounts by submitting a review: www.novusbio.com/reviews/submit/NBP1-96970

Earn gift cards/discounts by submitting a publication using this product:
www.novusbio.com/publications

