

Product Datasheet

Porcine IgM Isotype Control

NBP1-96788

Unit Size: 1 mg

Store at 4C short term. For extended storage, add an equal volume of glycerol, aliquot and store at -20C or below. Avoid repeated freeze-thaw cycles.

www.novusbio.com



technical@novusbio.com

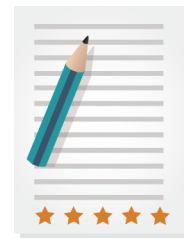
Protocols, Publications, Related Products, Reviews, Research Tools and Images at:
www.novusbio.com/NBP1-96788

Updated 10/23/2024 v.20.1

Earn rewards for product reviews and publications.

Submit a publication at www.novusbio.com/publications

Submit a review at www.novusbio.com/reviews/destination/NBP1-96788



NBP1-96788

Porcine IgM Isotype Control

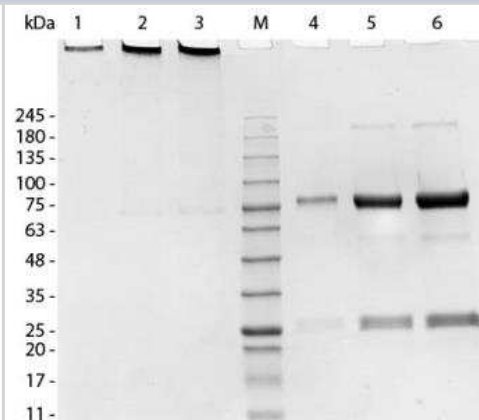
Product Information	
Unit Size	1 mg
Concentration	Please contact technical services for concentration.
Storage	Store at 4C short term. For extended storage, add an equal volume of glycerol, aliquot and store at -20C or below. Avoid repeated freeze-thaw cycles.
Preservative	0.1% Sodium Azide
Isotype	IgM
Purity	Multi-step
Buffer	0.1 M Tris Chloride, 0.5 M Sodium Chloride, pH 8.0

Product Description	
Description	<p>This product was prepared from normal serum by a multi-step process which includes delipidation, selective precipitation and tandem molecular sieve chromatography followed by extensive dialysis against the buffer stated above. Assay by immunoelectrophoresis resulting in a single precipitin arc against anti-Swine Serum and anti-Swine IgM (u chain specific)</p> <p>Store vial at 4C prior to opening. This product is stable 4C as an undiluted liquid. Dilute only prior to immediate use. For extended storage mix with an equal volume of glycerol, aliquot contents and freeze at -20C or below. Avoid cycles of freezing and thawing.</p>
Host	Pig
Gene ID	3507
Gene Symbol	IGHM
Species	Porcine
Specificity/Sensitivity	No reaction was observed against anti-Swine IgG F(c). Some light chain cross reactivity will occur with anti-Swine IgG.

Product Application Details	
Applications	Western Blot, ELISA, Immunohistochemistry, SDS-Page
Recommended Dilutions	Western Blot 1:100 - 1:2000, ELISA 1:100 - 1:2000, Immunohistochemistry 1:10 - 1:500, SDS-Page
Application Notes	This product has been tested by SDS-Page and can be utilized as a control or standard reagent in Western Blotting and ELISA experiments.

Images

SDS-Page: Porcine IgM Isotype Control [NBP1-96788] - Lane 1: Swine IgM, 1.0 ug, Non-reduced. Lane 2: Swine IgM, 5.0 ug, Non-reduced. Lane 3: Swine IgM, 10.0 ug, Non-reduced. M: Opal Pre-stained Marker. Lane 4: Swine IgM, 1.0 ug, Reduced. Lane 5: Swine IgM, 5.0 ug, Reduced. Lane 6: Swine IgM, 10.0 ug, Reduced. Predicted/Observed size - Non-Reduced: 900 kDa, Reduced - 75, 25 kDa.





Novus Biologicals USA

10730 E. Briarwood Avenue
Centennial, CO 80112
USA

Phone: 303.730.1950

Toll Free: 1.888.506.6887

Fax: 303.730.1966

nb-customerservice@bio-techne.com

Bio-Techne Canada

21 Canmotor Ave
Toronto, ON M8Z 4E6
Canada

Phone: 905.827.6400

Toll Free: 855.668.8722

Fax: 905.827.6402

canada.inquires@bio-techne.com

Bio-Techne Ltd

19 Barton Lane
Abingdon Science Park
Abingdon, OX14 3NB, United Kingdom

Phone: (44) (0) 1235 529449

Free Phone: 0800 37 34 15

Fax: (44) (0) 1235 533420

info.EMEA@bio-techne.com

General Contact Information

www.novusbio.com

Technical Support: nb-technical@bio-techne.com

Orders: nb-customerservice@bio-techne.com

General: novus@novusbio.com

Products Related to NBP1-96788

H00003507-P01-10ug	Recombinant Human IgM GST (N-Term) Protein
NB100-524	NOD2 Antibody (2D9) - BSA Free
NBP2-34253-0.1mg	IgM Antibody (IM260)
7268-CT-100	CTLA-4 [Unconjugated]

Limitations

This product is for research use only and is not approved for use in humans or in clinical diagnosis. Isotype Controls are guaranteed for 1 year from date of receipt.

For more information on our 100% guarantee, please visit www.novusbio.com/guarantee

Earn gift cards/discounts by submitting a review: www.novusbio.com/reviews/submit/NBP1-96788

Earn gift cards/discounts by submitting a publication using this product:
www.novusbio.com/publications

