

Product Datasheet

Chicken IgG Fc Isotype Control NBP1-96786

Unit Size: 1 mg

Store at 4C short term. Aliquot and store at -20C long term. Avoid freeze-thaw cycles.

www.novusbio.com



technical@novusbio.com

Protocols, Publications, Related Products, Reviews, Research Tools and Images at:
www.novusbio.com/NBP1-96786

Updated 10/23/2024 v.20.1

Earn rewards for product
reviews and publications.

Submit a publication at www.novusbio.com/publications

Submit a review at www.novusbio.com/reviews/destination/NBP1-96786



NBP1-96786**Chicken IgG Fc Isotype Control**

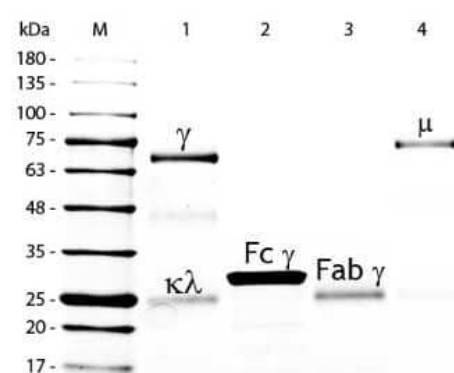
Product Information	
Unit Size	1 mg
Concentration	Please contact technical services for concentration.
Storage	Store at 4C short term. Aliquot and store at -20C long term. Avoid freeze-thaw cycles.
Preservative	0.01% Sodium Azide
Isotype	IgG
Purity	Multi-step
Buffer	0.02 M Potassium Phosphate, 0.15 M Sodium Chloride, pH 7.2

Product Description	
Description	<p>This product was prepared from normal serum by a multi-step process which includes delipidation, salt fractionation, ion exchange chromatography and papain digestion followed by chromatographic separation and extensive dialysis against the buffer stated above. Assay by immunoelectrophoresis resulted in a single precipitin arc against anti-Chicken Serum, anti-Chicken IgG and anti-Chicken IgG F(c)</p> <p>Store vial at 4C prior to opening. Stable at 4C as an undiluted liquid. Dilute only prior to immediate use. For extended storage, aliquot contents and freeze at -20C or below. Avoid cycles of freezing and thawing.</p>
Host	Chicken
Species	Chicken
Specificity/Sensitivity	No reaction was observed against anti-Chicken IgG F(ab') ₂ or anti-Papain.

Product Application Details	
Applications	Western Blot, ELISA, SDS-Page
Recommended Dilutions	Western Blot 1:100 - 1:2000, ELISA, SDS-Page
Application Notes	This product has been tested by SDS-PAGE and can be utilized as a control or standard reagent in Western Blotting and ELISA experiments.

Images

SDS-Page: Chicken IgG Fc Isotype Control [NBP1-96786] - SDS-PAGE of Chicken IgG F(c) Fragment. Lane M: 5 uL Opal Prestained Marker. Lane 1: Reduced Chicken IgG Whole Molecule. Lane 2: Reduced Chicken IgG F(c) Fragment. Lane 3: Reduced Chicken IgG Fab Fragment. Lane 4: Reduced Chicken IgM Whole Molecule. Load: 1 ug per lane. Predicted/Observed size: IgG at 72 and 25 kDa; F(c) at 25 kDa; Fab at 25 kDa; IgM at 75 kDa. Observed F(c) Fragment migrates slightly higher. Other bands: Chicken IgG heavy chain alternative splicing variant at approximately 40 kDa in Lane 1.





Novus Biologicals USA

10730 E. Briarwood Avenue
Centennial, CO 80112
USA
Phone: 303.730.1950
Toll Free: 1.888.506.6887
Fax: 303.730.1966
nb-customerservice@bio-techne.com

Bio-Techne Canada

21 Canmotor Ave
Toronto, ON M8Z 4E6
Canada
Phone: 905.827.6400
Toll Free: 855.668.8722
Fax: 905.827.6402
canada.inquires@bio-techne.com

Bio-Techne Ltd

19 Barton Lane
Abingdon Science Park
Abingdon, OX14 3NB, United Kingdom
Phone: (44) (0) 1235 529449
Free Phone: 0800 37 34 15
Fax: (44) (0) 1235 533420
info.EMEA@bio-techne.com

General Contact Information

www.novusbio.com
Technical Support: nb-technical@bio-techne.com
Orders: nb-customerservice@bio-techne.com
General: novus@novusbio.com

Products Related to NBP1-96786

NB7446	Goat anti-Human IgG Fc Secondary Antibody
--------	---

Limitations

This product is for research use only and is not approved for use in humans or in clinical diagnosis. Isotype Controls are guaranteed for 1 year from date of receipt.

For more information on our 100% guarantee, please visit www.novusbio.com/guarantee

Earn gift cards/discounts by submitting a review: www.novusbio.com/reviews/submit/NBP1-96786

Earn gift cards/discounts by submitting a publication using this product:
www.novusbio.com/publications

