

Product Datasheet

CHCHD2 Antibody - BSA Free

NBP1-94106

Unit Size: 0.1 ml

Store at 4C short term. Aliquot and store at -20C long term. Avoid freeze-thaw cycles.

www.novusbio.com



technical@novusbio.com

Publications: 2

Protocols, Publications, Related Products, Reviews, Research Tools and Images at:
www.novusbio.com/NBP1-94106

Updated 2/21/2025 v.20.1

Earn rewards for product
reviews and publications.

Submit a publication at www.novusbio.com/publications

Submit a review at www.novusbio.com/reviews/destination/NBP1-94106



NBP1-94106

CHCHD2 Antibody - BSA Free

Product Information

Unit Size	0.1 ml
Concentration	Concentrations vary lot to lot. See vial label for concentration. If unlisted please contact technical services.
Storage	Store at 4C short term. Aliquot and store at -20C long term. Avoid freeze-thaw cycles.
Clonality	Polyclonal
Preservative	0.02% Sodium Azide
Isotype	IgG
Purity	Immunogen affinity purified
Buffer	PBS (pH 7.2) and 40% Glycerol

Product Description

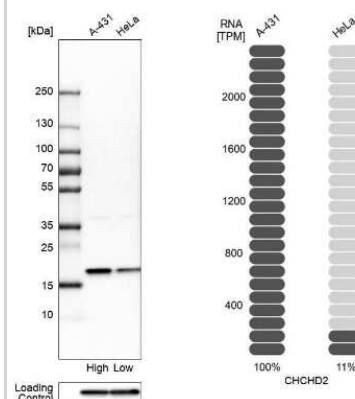
Host	Rabbit
Gene ID	51142
Gene Symbol	CHCHD2
Species	Human
Immunogen	This antibody was developed against Recombinant Protein corresponding to amino acids: YQQHQGTQPAQQQQPCLYEIKQFLECAQNQGGDIKLCEGFNEVLKQCRLANR

Product Application Details

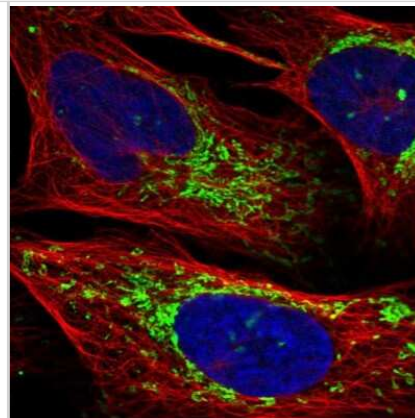
Applications	Western Blot, Immunocytochemistry/ Immunofluorescence, Immunohistochemistry, Immunohistochemistry-Paraffin
Recommended Dilutions	Western Blot 0.04-0.4 ug/ml, Immunohistochemistry 1:200 - 1:500, Immunocytochemistry/ Immunofluorescence 0.25-2 ug/ml, Immunohistochemistry-Paraffin 1:200 - 1:500
Application Notes	For IHC-Paraffin, HIER pH 6 retrieval is recommended. ICC/IF Fixation Permeabilization: Use PFA/Triton X-100.

Images

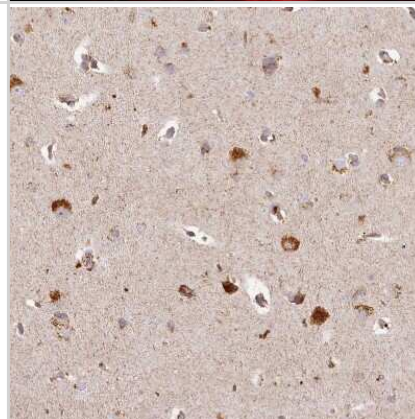
Western Blot: CHCHD2 Antibody [NBP1-94106] - Analysis in human cell lines A-431 and HeLa using anti-CHCHD2 antibody. Corresponding CHCHD2 RNA-seq data are presented for the same cell lines. Loading control: anti-COX4I1.



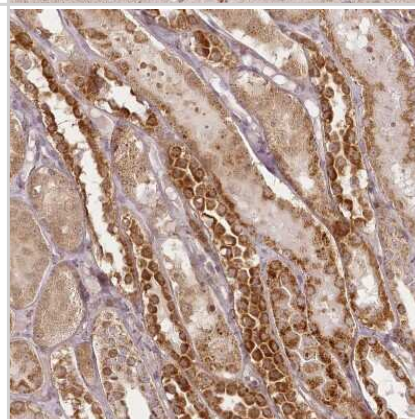
Immunocytochemistry/Immunofluorescence: CHCHD2 Antibody [NBP1-94106] - Staining of human cell line U-2 OS shows localization to mitochondria. Antibody staining is shown in green.



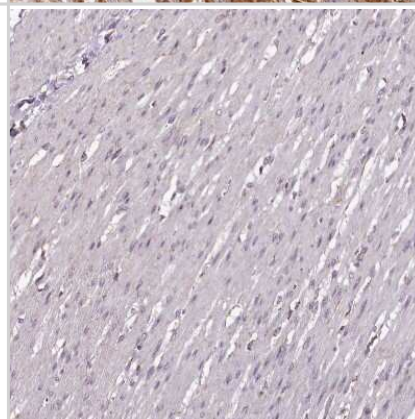
Immunohistochemistry-Paraffin: CHCHD2 Antibody [NBP1-94106] - Staining of human cerebral cortex shows strong cytoplasmic positivity in neurons.



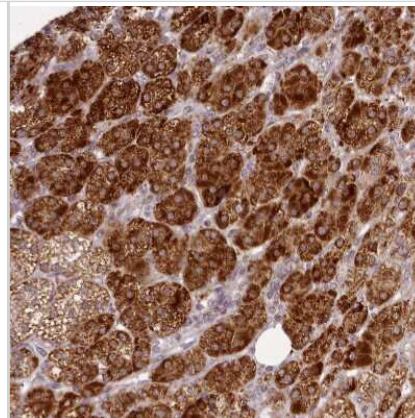
Immunohistochemistry-Paraffin: CHCHD2 Antibody [NBP1-94106] - Staining of human kidney shows strong cytoplasmic positivity in cells in tubules.



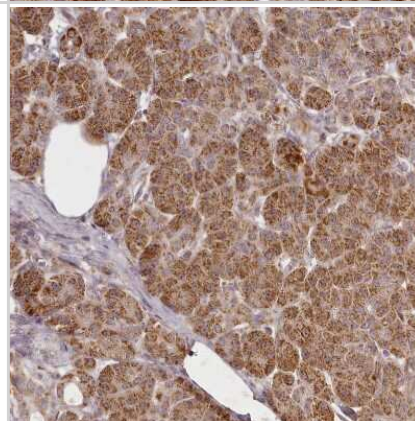
Immunohistochemistry-Paraffin: CHCHD2 Antibody [NBP1-94106] - Staining of human smooth muscle shows no positivity in smooth muscle cells.



Immunohistochemistry-Paraffin: CHCHD2 Antibody [NBP1-94106] - Staining of human adrenal gland shows strong cytoplasmic positivity in glandular cells.



Immunohistochemistry-Paraffin: CHCHD2 Antibody [NBP1-94106] - Staining of human pancreas shows moderate cytoplasmic positivity in exocrine glandular cells.



Publications

Jan C. Lumibao, Payton L. Haak, Vladimir L. Kolossov, Jee-Wei Emily Chen, Jeremy Stutchman, Alejandra Ruiz, Mayandi Sivaguru, Jann N. Sarkaria, Brendan A.C. Harley, Andrew J. Steelman, H. Rex Gaskins CHCHD2 mediates glioblastoma cell proliferation, mitochondrial metabolism, hypoxia-induced invasion and therapeutic resistance International Journal of Oncology 2023-11-01 [PMID: 37654190]

Lumibao JC CHCHD2 and the tumor microenvironment in glioblastoma Thesis (ICC/IF, WB, Human)



Novus Biologicals USA

10730 E. Briarwood Avenue
Centennial, CO 80112
USA
Phone: 303.730.1950
Toll Free: 1.888.506.6887
Fax: 303.730.1966
nb-customerservice@bio-techne.com

Bio-Techne Canada

21 Canmotor Ave
Toronto, ON M8Z 4E6
Canada
Phone: 905.827.6400
Toll Free: 855.668.8722
Fax: 905.827.6402
canada.inquires@bio-techne.com

Bio-Techne Ltd

19 Barton Lane
Abingdon Science Park
Abingdon, OX14 3NB, United Kingdom
Phone: (44) (0) 1235 529449
Free Phone: 0800 37 34 15
Fax: (44) (0) 1235 533420
info.EMEA@bio-techne.com

General Contact Information

www.novusbio.com
Technical Support: nb-technical@bio-techne.com
Orders: nb-customerservice@bio-techne.com
General: novus@novusbio.com

Products Related to NBP1-94106

NBP1-94106PEP	CHCHD2 Recombinant Protein Antigen
HAF008	Goat anti-Rabbit IgG Secondary Antibody [HRP]
NB7160	Goat anti-Rabbit IgG (H+L) Secondary Antibody [HRP]
NBP2-24891	Rabbit IgG Isotype Control

Limitations

This product is for research use only and is not approved for use in humans or in clinical diagnosis. Primary Antibodies are guaranteed for 1 year from date of receipt.

For more information on our 100% guarantee, please visit www.novusbio.com/guarantee

Earn gift cards/discounts by submitting a review: www.novusbio.com/reviews/submit/NBP1-94106

Earn gift cards/discounts by submitting a publication using this product:
www.novusbio.com/publications

