

# Product Datasheet

## SBEM Antibody - BSA Free

### NBP1-92366

Unit Size: 0.1 ml

Store at 4C short term. Aliquot and store at -20C long term. Avoid freeze-thaw cycles.

[www.novusbio.com](http://www.novusbio.com)



[technical@novusbio.com](mailto:technical@novusbio.com)

**Reviews: 1 Publications: 2**

Protocols, Publications, Related Products, Reviews, Research Tools and Images at:  
[www.novusbio.com/NBP1-92366](http://www.novusbio.com/NBP1-92366)

Updated 3/4/2026 v.20.1

**Earn rewards for product reviews and publications.**

Submit a publication at [www.novusbio.com/publications](http://www.novusbio.com/publications)

Submit a review at [www.novusbio.com/reviews/destination/NBP1-92366](http://www.novusbio.com/reviews/destination/NBP1-92366)



**NBP1-92366**

SBEM Antibody - BSA Free

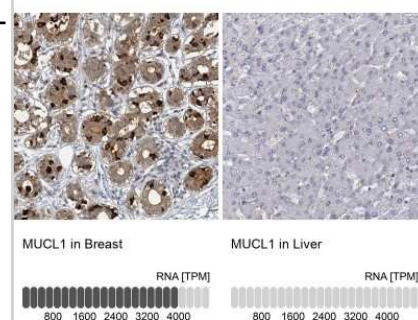
Product Information	
Unit Size	0.1 ml
Concentration	Concentrations vary lot to lot. See vial label for concentration. If unlisted please contact technical services.
Storage	Store at 4C short term. Aliquot and store at -20C long term. Avoid freeze-thaw cycles.
Clonality	Polyclonal
Preservative	0.02% Sodium Azide
Isotype	IgG
Purity	Affinity purified
Buffer	PBS (pH 7.2) and 40% Glycerol

Product Description	
Host	Rabbit
Gene ID	118430
Gene Symbol	MUCL1
Species	Human
Immunogen	This antibody was developed against Recombinant Protein corresponding to amino acids: AQNPTTAAPADTYPATGPADDEAPDAETTAATTA

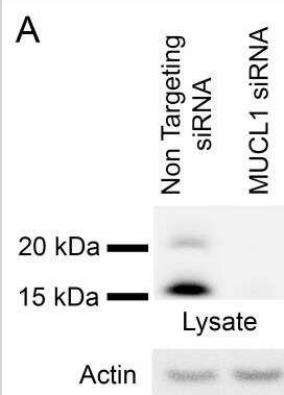
Product Application Details	
Applications	Western Blot, Immunohistochemistry-Paraffin, Immunohistochemistry, Knockdown Validated
Recommended Dilutions	Western Blot Validated from a verified customer review, Immunohistochemistry 1:50 - 1:200, Immunohistochemistry-Paraffin 1:50 - 1:200, Knockdown Validated
Application Notes	For IHC-Paraffin, HIER pH 6 retrieval is recommended.

**Images**

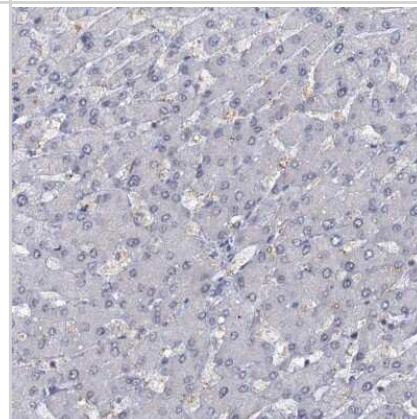
Immunohistochemistry-Paraffin: SBEM Antibody [NBP1-92366] - Staining in human breast and liver tissues. Corresponding MUCL1 RNA-seq data are presented for the same tissues.



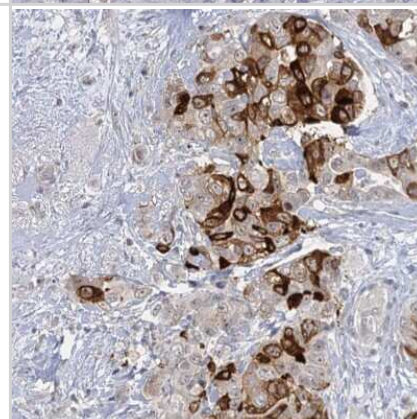
Western Blot: SBEM Antibody [NBP1-92366] - Analysis of SBEM in KPL4 whole cell lysate (left) and MUCL1 (SBEM) siRNA (right) using anti-SBEM antibody. Image submitted by a verified customer review



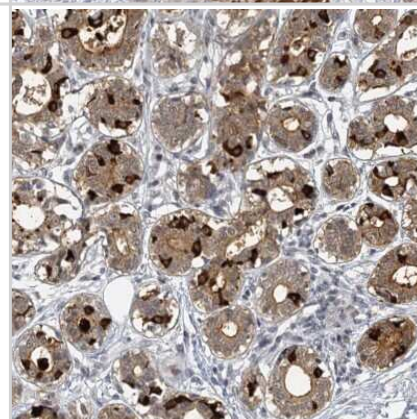
Immunohistochemistry-Paraffin: SBEM Antibody [NBP1-92366] - Immunohistochemical staining of human liver shows no positivity in hepatocytes as expected.



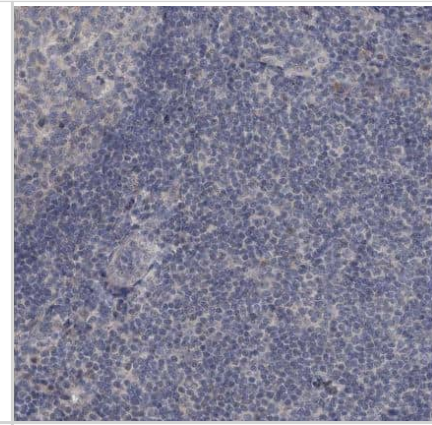
Immunohistochemistry-Paraffin: SBEM Antibody [NBP1-92366] - Staining of human breast cancer shows moderate to strong cytoplasmic positivity in tumor cells.



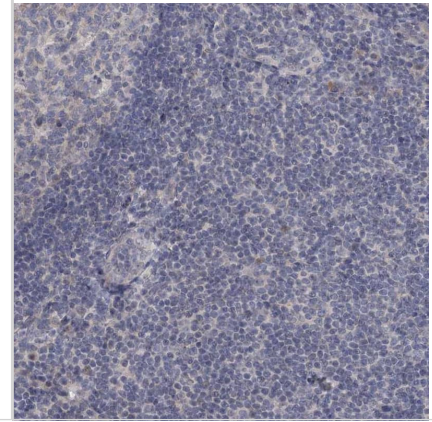
Immunohistochemistry-Paraffin: SBEM Antibody [NBP1-92366] - Staining of human breast shows moderate to strong cytoplasmic positivity in glandular cells.



Immunohistochemistry-Paraffin: SBEM Antibody [NBP1-92366] - Staining of human tonsil shows no positivity in non-germinal center cells as expected.



Staining of human tonsil shows no positivity in non-germinal center cells as expected.



## Publications

Kim J, Choi H. The mucin protein MUCL1 regulates melanogenesis and melanoma genes in a manner dependent on threonine content *British Journal of Dermatology* 2022-03-01 [PMID: 34545566]

Abdulla M, Traiki TB, Vaali-Mohammed MA et al. Targeting MUCL1 protein inhibits cell proliferation and EMT by deregulating beta catenin and increases irinotecan sensitivity in colorectal cancer *International journal of oncology* 2022-03-01 [PMID: 35059735] (WB, Human)



### **Novus Biologicals USA**

10730 E. Briarwood Avenue  
Centennial, CO 80112  
USA  
Phone: 303.730.1950  
Toll Free: 1.888.506.6887  
Fax: 303.730.1966  
nb-customerservice@bio-techne.com

### **Bio-Techne Canada**

21 Canmotor Ave  
Toronto, ON M8Z 4E6  
Canada  
Phone: 905.827.6400  
Toll Free: 855.668.8722  
Fax: 905.827.6402  
canada.inquires@bio-techne.com

### **Bio-Techne Ltd**

19 Barton Lane  
Abingdon Science Park  
Abingdon, OX14 3NB, United Kingdom  
Phone: (44) (0) 1235 529449  
Free Phone: 0800 37 34 15  
Fax: (44) (0) 1235 533420  
info.EMEA@bio-techne.com

### **General Contact Information**

www.novusbio.com  
Technical Support: nb-technical@bio-techne.com  
Orders: nb-customerservice@bio-techne.com  
General: novus@novusbio.com

### **Products Related to NBP1-92366**

---

NBP1-92366PEP	SBEM Recombinant Protein Antigen
HAF008	Goat anti-Rabbit IgG Secondary Antibody [HRP]
NB7160	Goat anti-Rabbit IgG (H+L) Secondary Antibody [HRP]
NBP2-24891	Rabbit IgG Isotype Control

---

### **Limitations**

This product is for research use only and is not approved for use in humans or in clinical diagnosis. Primary Antibodies are guaranteed for 1 year from date of receipt.

For more information on our 100% guarantee, please visit [www.novusbio.com/guarantee](http://www.novusbio.com/guarantee)

Earn gift cards/discounts by submitting a review: [www.novusbio.com/reviews/submit/NBP1-92366](http://www.novusbio.com/reviews/submit/NBP1-92366)

Earn gift cards/discounts by submitting a publication using this product:  
[www.novusbio.com/publications](http://www.novusbio.com/publications)

