

Product Datasheet

ALDH1A3 Antibody - BSA Free

NBP1-91657

Unit Size: 0.1 ml

Store at 4C short term. Aliquot and store at -20C long term. Avoid freeze-thaw cycles.

www.novusbio.com



technical@novusbio.com

Reviews: 1 Publications: 3

Protocols, Publications, Related Products, Reviews, Research Tools and Images at:
www.novusbio.com/NBP1-91657

Updated 2/21/2025 v.20.1

Earn rewards for product
reviews and publications.

Submit a publication at www.novusbio.com/publications

Submit a review at www.novusbio.com/reviews/destination/NBP1-91657



NBP1-91657

ALDH1A3 Antibody - BSA Free

Product Information

Unit Size	0.1 ml
Concentration	Concentrations vary lot to lot. See vial label for concentration. If unlisted please contact technical services.
Storage	Store at 4C short term. Aliquot and store at -20C long term. Avoid freeze-thaw cycles.
Clonality	Polyclonal
Preservative	0.02% Sodium Azide
Isotype	IgG
Purity	Immunogen affinity purified
Buffer	PBS (pH 7.2) and 40% Glycerol
Target Molecular Weight	56 kDa

Product Description

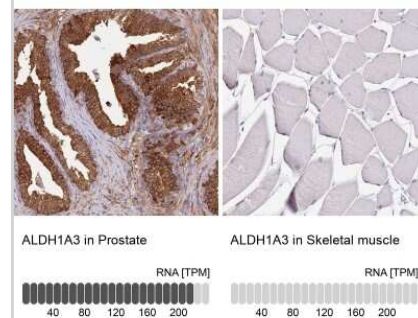
Host	Rabbit
Gene ID	220
Gene Symbol	ALDH1A3
Species	Human, Mouse
Reactivity Notes	Rat (83%). Mouse reactivity reported in scientific literature (PMID: 26511661).
Immunogen	This antibody was developed against Recombinant Protein corresponding to amino acids: ERGGAMATANGAVENGQPDRKPPALPRPIRNLEVKFTKIFIN

Product Application Details

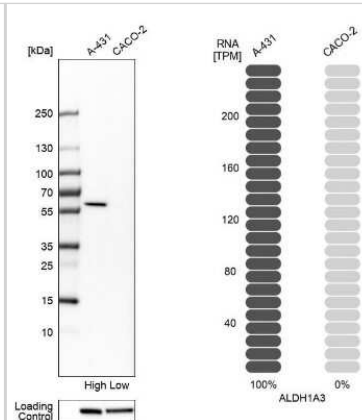
Applications	Western Blot, Immunocytochemistry/ Immunofluorescence, Immunohistochemistry, Immunohistochemistry-Frozen, Immunohistochemistry-Paraffin
Recommended Dilutions	Western Blot 0.04-0.4 ug/ml, Immunohistochemistry 1:20 - 1:50, Immunocytochemistry/ Immunofluorescence 0.25-2 ug/ml, Immunohistochemistry-Paraffin 1:20-1:50, Immunohistochemistry-Frozen Validated from a verified customer review
Application Notes	For IHC-Paraffin, HIER pH 6 retrieval method is recommended. ICC/IF Fixation Permeabilization, Use PFA/Triton X-100.

Images

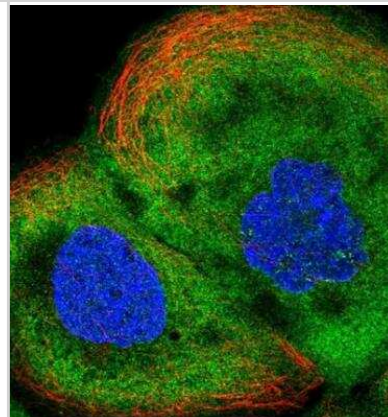
Immunohistochemistry-Paraffin: ALDH1A3 Antibody [NBP1-91657] - Staining in human prostate and skeletal muscle tissues using anti-ALDH1A3 antibody. Corresponding ALDH1A3 RNA-seq data are presented for the same tissues.



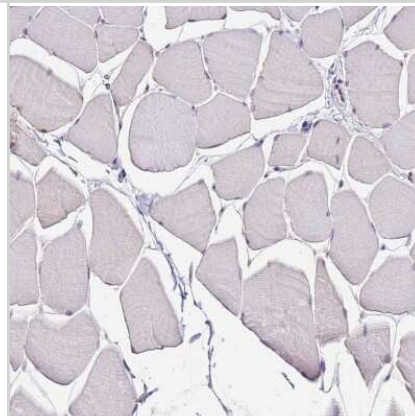
Western Blot: ALDH1A3 Antibody [NBP1-91657] - Analysis in human cell lines A-431 and Caco-2 using anti-ALDH1A3 antibody. Corresponding ALDH1A3 RNA-seq data are presented for the same cell lines. Loading control: anti-HDAC1.



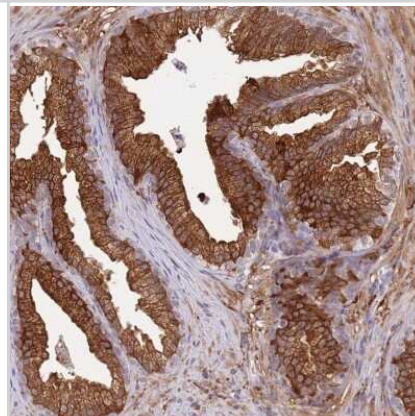
Immunocytochemistry/Immunofluorescence: ALDH1A3 Antibody [NBP1-91657] - Staining of human cell line A-431 shows positivity in plasma membrane and cytoplasm. Antibody staining is shown in green.



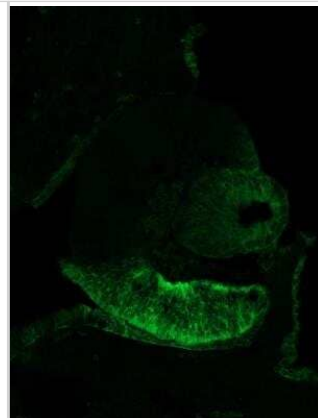
Immunohistochemistry-Paraffin: ALDH1A3 Antibody [NBP1-91657] - Staining of human skeletal muscle shows no positivity in myocytes.



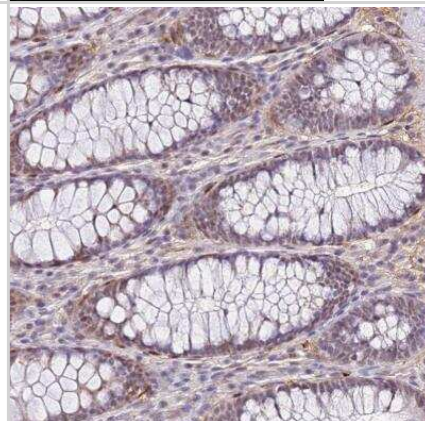
Immunohistochemistry-Paraffin: ALDH1A3 Antibody [NBP1-91657] - Staining of human prostate shows high expression.



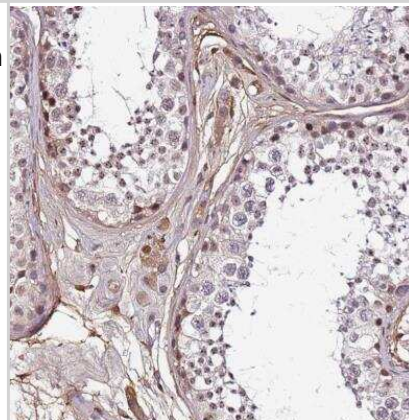
Immunohistochemistry-Frozen: ALDH1A3 Antibody [NBP1-91657] - Aldh1a3 expression on E11.5 mouse embryo eye. Heat induced antigen retrieval at pH 6.0 was done for 20 minutes with mouse E11.5 coronal cryosection. Image submitted by a verified customer review.



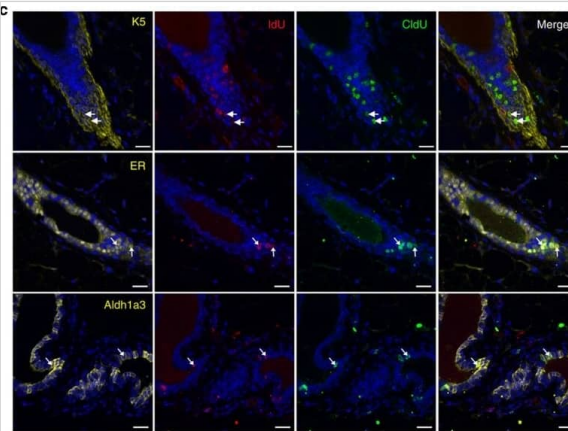
Immunohistochemistry-Paraffin: ALDH1A3 Antibody [NBP1-91657] - Staining of human colon shows moderate cytoplasmic positivity in glandular cells.



Immunohistochemistry-Paraffin: ALDH1A3 Antibody [NBP1-91657] - Staining of human testis shows moderate cytoplasmic positivity in cells in seminiferous ducts.



Immunocytochemistry/ Immunofluorescence: ALDH1A3 Antibody [NBP1-91657] - Cell proliferation during the oestrus cycle. (a) Protocol: adult (≥ 10 -week-old) C57Bl6/J mice were administered CldU during pro-oestrus/early oestrus (blue arrows) & then IdU at metoestrus (red arrows) to detect sequential proliferation within the mammary gland. Immunofluorescent staining of adult mammary glands stained with CldU & IdU (b), & with ER, Aldh1a3 or K5 (c). Arrows indicate CldU+IdU+ cells, which demonstrate sequential cell division among mammary epithelial cells during the oestrus cycle. Representative image from four independent samples. Scale bars, 20 μm . (d) Representative flow cytometry dot plot showing the incorporation of EdU by NCL cells following injection of either oestrogen & progesterone or oil. A total of six independent adult (≥ 10 -week-old) mice were analysed (four injected with oestrogen & progesterone, two injected with oil only). (e) NCL cells from adult (≥ 10 -week-old) mice that are either in G0/G1 versus S/G2/M stages of the cell cycle were analysed by quantitative RT-PCR for ER α mRNA expression relative to Gapdh mRNA. Expression is relative to that of NCL G0/G1 cells. Mean \pm s.e.m of five independent mice. Image collected & cropped by CiteAb from the following publication (<https://pubmed.ncbi.nlm.nih.gov/26511661>), licensed under a CC-BY license. Not internally tested by Novus Biologicals.



Publications

Manuel Colucci, Sara Zumerle, Silvia Bressan, Federico Gianfanti, Martina Troiani, Aurora Valdata, Mariantonietta D'Ambrosio, Emiliano Pasquini, Angelica Varesi, Francesca Cogo, Simone Mosole, Cristina Dongilli, Maria Andrea Desbats, Liliana Contu, Ajinkya Revankdar, Jingjing Chen, Madhuri Kalathur, Maria Luna Perciato, Rossella Basilotta, Laczko Endre, Stefan Schauer, Alaa Othman, Ilaria Guccini, Miriam Saponaro, Luisa Maraccani, Nicolò Bancaro, Ping Lai, Lei Liu, Nicolò Pernigoni, Federico Mele, Sara Merler, Lloyd C. Trotman, Greta Guarda, Bianca Cali, Monica Montopoli, Andrea Alimonti Retinoic acid receptor activation reprograms senescence response and enhances anti-tumor activity of natural killer cells *Cancer Cell* 2024-04-08 [PMID: 38428412]

Giraddi R R, Shehata M et al. Stem and progenitor cell division kinetics during postnatal mouse mammary gland development. *Nat Commun* 2015-10-29 [PMID: 26511661] (WB, Mouse)

Chefetz I, Grimley E, Yang K et al. A Pan-ALDH1A Inhibitor Induces Necroptosis in Ovarian Cancer Stem-like Cells *Cell Rep* 2019-03-12 [PMID: 30865894] (WB, Human)



Novus Biologicals USA

10730 E. Briarwood Avenue
Centennial, CO 80112
USA
Phone: 303.730.1950
Toll Free: 1.888.506.6887
Fax: 303.730.1966
nb-customerservice@bio-techne.com

Bio-Techne Canada

21 Canmotor Ave
Toronto, ON M8Z 4E6
Canada
Phone: 905.827.6400
Toll Free: 855.668.8722
Fax: 905.827.6402
canada.inquires@bio-techne.com

Bio-Techne Ltd

19 Barton Lane
Abingdon Science Park
Abingdon, OX14 3NB, United Kingdom
Phone: (44) (0) 1235 529449
Free Phone: 0800 37 34 15
Fax: (44) (0) 1235 533420
info.EMEA@bio-techne.com

General Contact Information

www.novusbio.com
Technical Support: nb-technical@bio-techne.com
Orders: nb-customerservice@bio-techne.com
General: novus@novusbio.com

Products Related to NBP1-91657

NBP1-91657PEP	ALDH1A3 Recombinant Protein Antigen
HAF008	Goat anti-Rabbit IgG Secondary Antibody [HRP]
NB7160	Goat anti-Rabbit IgG (H+L) Secondary Antibody [HRP]
NBP2-24891	Rabbit IgG Isotype Control

Limitations

This product is for research use only and is not approved for use in humans or in clinical diagnosis. Primary Antibodies are guaranteed for 1 year from date of receipt.

For more information on our 100% guarantee, please visit www.novusbio.com/guarantee

Earn gift cards/discounts by submitting a review: www.novusbio.com/reviews/submit/NBP1-91657

Earn gift cards/discounts by submitting a publication using this product:
www.novusbio.com/publications

