

# Product Datasheet

## SETD8 Antibody - BSA Free

### NBP1-91269

Unit Size: 0.1 ml

Store at 4C short term. Aliquot and store at -20C long term. Avoid freeze-thaw cycles.

[www.novusbio.com](http://www.novusbio.com)



[technical@novusbio.com](mailto:technical@novusbio.com)

Reviews: 2

Protocols, Publications, Related Products, Reviews, Research Tools and Images at:  
[www.novusbio.com/NBP1-91269](http://www.novusbio.com/NBP1-91269)

Updated 10/23/2024 v.20.1

Earn rewards for product  
reviews and publications.

Submit a publication at [www.novusbio.com/publications](http://www.novusbio.com/publications)

Submit a review at [www.novusbio.com/reviews/destination/NBP1-91269](http://www.novusbio.com/reviews/destination/NBP1-91269)



**NBP1-91269**

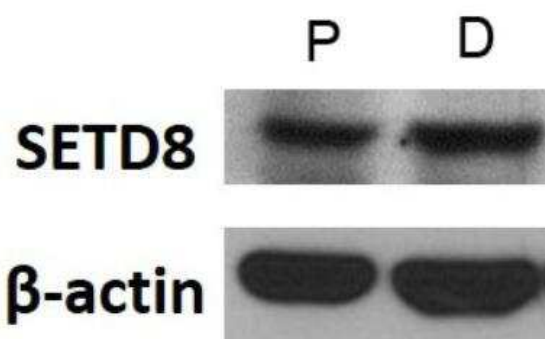
SETD8 Antibody - BSA Free

Product Information	
Unit Size	0.1 ml
Concentration	1.15 mg/ml
Storage	Store at 4C short term. Aliquot and store at -20C long term. Avoid freeze-thaw cycles.
Clonality	Polyclonal
Preservative	0.05% Sodium Azide
Isotype	IgG
Purity	Immunogen affinity purified
Buffer	PBS and 30% Glycerol
Product Description	
Host	Rabbit
Gene ID	387893
Gene Symbol	KMT5A
Species	Human, Mouse
Immunogen	A synthetic peptide made to an internal portion of the human SETD8 protein (between residues 100-200) [UniProt Q9NQR1]
Product Application Details	
Applications	Western Blot, ICC/IF (Negative), Immunohistochemistry (Negative)
Recommended Dilutions	Western Blot 1:1000, Immunohistochemistry (Negative), ICC/IF (Negative)
Application Notes	This SETD8 antibody is useful for Western Blot where a band is seen ~42 kDa representing SETD8 protein. This antibody is not applicable for Immunocytochemistry or Immunohistochemistry.

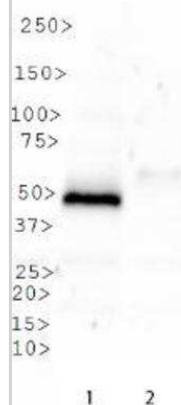


## Images

Western Blot: SETD8 Antibody [NBP1-91269] - Analysis of SETD8 in whole cell lysates of mouse proliferating neural progenitors (P) and differentiating neural stem cell (D) using anti-SETD8 antibody. Image from verified customer review.



Western Blot: SETD8 Antibody [NBP1-91269] - Western blot analysis of SETD8 in Lane 1. SETD8 overexpression vector containing C-terminal DDK tag. Lane 2. Empty vector.



## Procedures

### Serum protocol for SETD8 Antibody (NBP1-91269)

SETD8 Antibody:

Western Blot Protocol

1. Perform SDS-PAGE on samples to be analyzed, loading 40 ug of total protein per lane.
  2. Transfer proteins to membrane according to the instructions provided by the manufacturer of the membrane and transfer apparatus.
  3. Stain according to standard Ponceau S procedure (or similar product) to assess transfer success, and mark molecular weight standards where appropriate.
  4. Rinse the blot.
  5. Block the membrane using standard blocking buffer for at least 1 hour.
  6. Wash the membrane in wash buffer three times for 10 minutes each.
  7. Dilute primary antibody in blocking buffer and incubate 1 hour at room temperature.
  8. Wash the membrane in wash buffer three times for 10 minutes each.
  9. Apply the diluted HRP conjugated secondary antibody in blocking buffer (as per manufacturers instructions) and incubate 1 hour at room temperature.
  10. Wash the blot in wash buffer three times for 10 minutes each (this step can be repeated as required to reduce background).
  11. Apply the detection reagent of choice in accordance with the manufacturers instructions.
- Note: Tween-20 can be added to the blocking or antibody dilution buffer at a final concentration of 0.05-0.2%..

\*The above information is only intended as a guide. The researcher should determine what protocol best meets their needs. Please follow safe laboratory procedures.





### **Novus Biologicals USA**

10730 E. Briarwood Avenue  
Centennial, CO 80112  
USA  
Phone: 303.730.1950  
Toll Free: 1.888.506.6887  
Fax: 303.730.1966  
nb-customerservice@bio-techne.com

### **Bio-Techne Canada**

21 Canmotor Ave  
Toronto, ON M8Z 4E6  
Canada  
Phone: 905.827.6400  
Toll Free: 855.668.8722  
Fax: 905.827.6402  
canada.inquires@bio-techne.com

### **Bio-Techne Ltd**

19 Barton Lane  
Abingdon Science Park  
Abingdon, OX14 3NB, United Kingdom  
Phone: (44) (0) 1235 529449  
Free Phone: 0800 37 34 15  
Fax: (44) (0) 1235 533420  
info.EMEA@bio-techne.com

### **General Contact Information**

www.novusbio.com  
Technical Support: nb-technical@bio-techne.com  
Orders: nb-customerservice@bio-techne.com  
General: novus@novusbio.com

### **Products Related to NBP1-91269**

---

NBL1-15870	SETD8 Overexpression Lysate
HAF008	Goat anti-Rabbit IgG Secondary Antibody [HRP]
NB7160	Goat anti-Rabbit IgG (H+L) Secondary Antibody [HRP]
NBP2-24891	Rabbit IgG Isotype Control

---

### **Limitations**

This product is for research use only and is not approved for use in humans or in clinical diagnosis. Primary Antibodies are guaranteed for 1 year from date of receipt.

For more information on our 100% guarantee, please visit [www.novusbio.com/guarantee](http://www.novusbio.com/guarantee)

Earn gift cards/discounts by submitting a review: [www.novusbio.com/reviews/submit/NBP1-91269](http://www.novusbio.com/reviews/submit/NBP1-91269)

Earn gift cards/discounts by submitting a publication using this product:  
[www.novusbio.com/publications](http://www.novusbio.com/publications)

