

Product Datasheet

Human Bcl-2 ELISA Kit (Colorimetric) NBP1-91188

Unit Size: 96 Tests

Storage of components varies. See protocol for specific instructions.

www.novusbio.com



technical@novusbio.com

Publications: 1

Protocols, Publications, Related Products, Reviews, Research Tools and Images at:
www.novusbio.com/NBP1-91188

Updated 10/23/2024 v.20.1

Earn rewards for product
reviews and publications.

Submit a publication at www.novusbio.com/publications

Submit a review at www.novusbio.com/reviews/destination/NBP1-91188



NBP1-91188**Human Bcl-2 ELISA Kit (Colorimetric)**

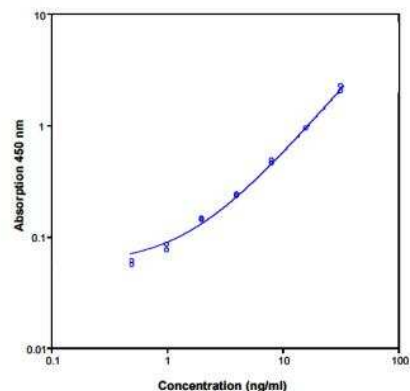
Product Information	
Unit Size	96 Tests
Concentration	Concentration is not relevant for this product. Please see the protocols for proper use of this product.
Storage	Storage of components varies. See protocol for specific instructions.

Product Description	
Description	The human Bcl-2 ELISA is an enzyme-linked immunosorbent assay for the quantitative detection of human Bcl-2.
Gene ID	596
Gene Symbol	BCL2
Species	Human
Kit Components	Aluminium pouch(es) with a Microwell Plate coated with monoclonal antibody to human Bcl-2, Biotin-Conjugate anti-human Bcl-2 monoclonal antibody, Streptavidin-HRP, Human Bcl-2 Standard lyophilized, 64 ng/mL upon reconstitution, Sample Diluent, Assay Buffer Concentrate 20x (PBS with 1% Tween 20 and 10% BSA), Wash Buffer Concentrate 20x (PBS with 1% Tween 20), Lysis Buffer 10x, Substrate Solution (tetramethyl-benzidine), Stop Solution (1M Phosphoric acid), Adhesive Films
Standard Curve Range	0.50 - 32.0 ng/mL
Sensitivity	0.5 ng/mL
Inter Assay	CV% < 12%
Intra Assay	CV% < 8.60%
Assay Type	Sandwich ELISA
Spiking Recovery	71%
Suitable Sample Type	Cell lysate, serum, plasma
Sample Volume	20 uL

Product Application Details	
Applications	ELISA
Recommended Dilutions	ELISA

Images

ELISA: Bcl-2 ELISA Kit [NBP1-91188] - Standard curve



Publications

Fouad A, Amin E, Ahmed A Naringenin and Vanillin Mitigate Cadmium-Induced Pancreatic Injury in Rats via Inhibition of JNK and p38 MAPK Pathways PJ 2020-06-18 (Rat)





Novus Biologicals USA

10730 E. Briarwood Avenue
Centennial, CO 80112
USA
Phone: 303.730.1950
Toll Free: 1.888.506.6887
Fax: 303.730.1966
nb-customerservice@bio-techne.com

Bio-Techne Canada

21 Canmotor Ave
Toronto, ON M8Z 4E6
Canada
Phone: 905.827.6400
Toll Free: 855.668.8722
Fax: 905.827.6402
canada.inquires@bio-techne.com

Bio-Techne Ltd

19 Barton Lane
Abingdon Science Park
Abingdon, OX14 3NB, United Kingdom
Phone: (44) (0) 1235 529449
Free Phone: 0800 37 34 15
Fax: (44) (0) 1235 533420
info.EMEA@bio-techne.com

General Contact Information

www.novusbio.com
Technical Support: nb-technical@bio-techne.com
Orders: nb-customerservice@bio-techne.com
General: novus@novusbio.com

Products Related to NBP1-91188

NBP2-34889-100ug	Recombinant Human Bcl-2 Protein
210-TA-005	TNF-alpha [Unconjugated]
NB100-56098	Bcl-2 Antibody
AF835	Caspase-3 Antibody [Unconjugated] - Active

Limitations

This product is for research use only and is not approved for use in humans or in clinical diagnosis. ELISA Kits are guaranteed for 6 months from date of receipt.

For more information on our 100% guarantee, please visit www.novusbio.com/guarantee

Earn gift cards/discounts by submitting a review: www.novusbio.com/reviews/submit/NBP1-91188

Earn gift cards/discounts by submitting a publication using this product:
www.novusbio.com/publications

