

Product Datasheet

Human DPPIV/CD26 ELISA Kit (Colorimetric) NBP1-91180

Unit Size: 96 Tests

Storage of components varies. See protocol for specific instructions.

www.novusbio.com



technical@novusbio.com

Protocols, Publications, Related Products, Reviews, Research Tools and Images at:
www.novusbio.com/NBP1-91180

Updated 10/23/2024 v.20.1

Earn rewards for product
reviews and publications.

Submit a publication at www.novusbio.com/publications

Submit a review at www.novusbio.com/reviews/destination/NBP1-91180



NBP1-91180**Human DPPIV/CD26 ELISA Kit (Colorimetric)**

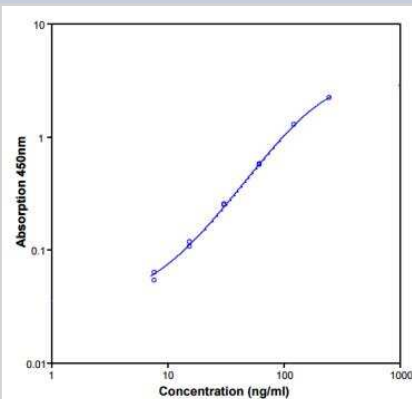
| Product Information | |
|----------------------------|--|
| Unit Size | 96 Tests |
| Concentration | Concentration is not relevant for this product. Please see the protocols for proper use of this product. |
| Storage | Storage of components varies. See protocol for specific instructions. |

| Product Description | |
|--------------------------------|--|
| Description | The human sCD26 ELISA is an enzyme-linked immunosorbent assay for the quantitative detection of human sCD26 |
| Gene ID | 1803 |
| Gene Symbol | DPP4 |
| Species | Human |
| Specificity/Sensitivity | The interference of circulating factors of the immune system was evaluated by spiking these proteins at physiologically relevant concentrations into a human DPPIV/CD26 positive serum. No crossreactivity was detected. |
| Kit Components | Aluminium pouch(es) with a Microwell Plate coated with monoclonal antibody to human sCD26, Biotin-Conjugate anti-human sCD26 monoclonal antibody, Streptavidin-HRP, Human sCD26 Standard, 500 ng/ml upon dilution, Sample Diluent, Assay Buffer Concentrate 20x (PBS with 1% Tween 20 and 10% BSA), Wash Buffer Concentrate 20x (PBS with 1% Tween 20), Substrate Solution (tetramethyl-benzidine), Stop Solution (1M Phosphoric acid), Adhesive Films |
| Standard Curve Range | 15.6 - 500 ng/mL |
| Sensitivity | 7.3 ng/mL |
| Inter Assay | CV% < 9.10% |
| Intra Assay | CV% < 4.60% |
| Assay Type | Sandwich ELISA |
| Spiking Recovery | 95% |
| Suitable Sample Type | Cell culture supernatant, serum |
| Sample Volume | 20 uL |

| Product Application Details | |
|------------------------------------|-------|
| Applications | ELISA |
| Recommended Dilutions | ELISA |

Images

ELISA: DPPIV/CD26 ELISA Kit [NBP1-91180] - Standard curve





Novus Biologicals USA

10730 E. Briarwood Avenue
Centennial, CO 80112
USA
Phone: 303.730.1950
Toll Free: 1.888.506.6887
Fax: 303.730.1966
nb-customerservice@bio-techne.com

Bio-Techne Canada

21 Canmotor Ave
Toronto, ON M8Z 4E6
Canada
Phone: 905.827.6400
Toll Free: 855.668.8722
Fax: 905.827.6402
canada.inquires@bio-techne.com

Bio-Techne Ltd

19 Barton Lane
Abingdon Science Park
Abingdon, OX14 3NB, United Kingdom
Phone: (44) (0) 1235 529449
Free Phone: 0800 37 34 15
Fax: (44) (0) 1235 533420
info.EMEA@bio-techne.com

General Contact Information

www.novusbio.com
Technical Support: nb-technical@bio-techne.com
Orders: nb-customerservice@bio-techne.com
General: novus@novusbio.com

Products Related to NBP1-91180

| | |
|---------------|--|
| NBP3-21319PEP | DPPIV/CD26 Recombinant Protein Antigen |
| 202-IL-010 | IL-2 [Unconjugated] |
| AF1180 | DPPIV/CD26 Antibody [Unconjugated] |
| NBP1-19371 | CD4 Antibody - BSA Free |

Limitations

This product is for research use only and is not approved for use in humans or in clinical diagnosis. ELISA Kits are guaranteed for 6 months from date of receipt.

For more information on our 100% guarantee, please visit www.novusbio.com/guarantee

Earn gift cards/discounts by submitting a review: www.novusbio.com/reviews/submit/NBP1-91180

Earn gift cards/discounts by submitting a publication using this product:
www.novusbio.com/publications

