

# Product Datasheet

## CapG Antibody - BSA Free

### NBP1-90215

Unit Size: 0.1 ml

Store at 4C short term. Aliquot and store at -20C long term. Avoid freeze-thaw cycles.

[www.novusbio.com](http://www.novusbio.com)



[technical@novusbio.com](mailto:technical@novusbio.com)

Protocols, Publications, Related Products, Reviews, Research Tools and Images at:  
[www.novusbio.com/NBP1-90215](http://www.novusbio.com/NBP1-90215)

Updated 2/21/2025 v.20.1

Earn rewards for product  
reviews and publications.

Submit a publication at [www.novusbio.com/publications](http://www.novusbio.com/publications)

Submit a review at [www.novusbio.com/reviews/destination/NBP1-90215](http://www.novusbio.com/reviews/destination/NBP1-90215)



**NBP1-90215**

CapG Antibody - BSA Free

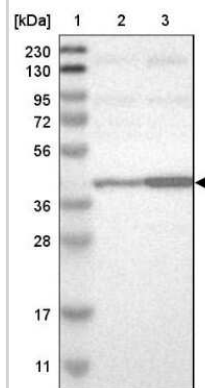
Product Information	
Unit Size	0.1 ml
Concentration	Concentrations vary lot to lot. See vial label for concentration. If unlisted please contact technical services.
Storage	Store at 4C short term. Aliquot and store at -20C long term. Avoid freeze-thaw cycles.
Clonality	Polyclonal
Preservative	0.02% Sodium Azide
Isotype	IgG
Purity	Immunogen affinity purified
Buffer	PBS (pH 7.2) and 40% Glycerol
Target Molecular Weight	38 kDa

Product Description	
Host	Rabbit
Gene ID	822
Gene Symbol	CAPG
Species	Human, Mouse, Rat
Immunogen	This antibody was developed against Recombinant Protein corresponding to amino acids: SSPFALELLISDDCFVLDNGLCGKIYWKGRKANERQAALQVAEGFISRMQY APNTQVEILPQGRESPIFKQF

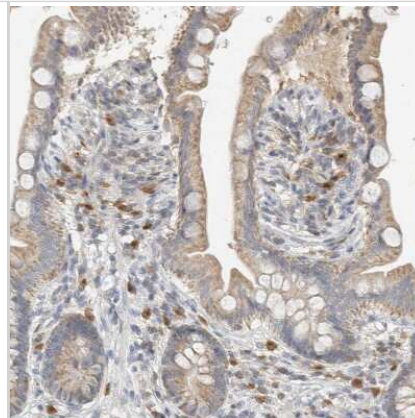
Product Application Details	
Applications	Western Blot, Immunohistochemistry, Immunohistochemistry-Paraffin
Recommended Dilutions	Western Blot 0.04-0.4 ug/ml, Immunohistochemistry 1:1000 - 1:2500, Immunohistochemistry-Paraffin 1:1000 - 1:2500
Application Notes	For IHC-Paraffin, HIER pH 6 retrieval is recommended.

**Images**

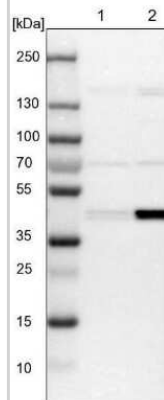
Western Blot: CapG Antibody [NBP1-90215] - Lane 1: Marker [kDa] 230, 130, 95, 72, 56, 36, 28, 17, 11. Lane 2: Human cell line RT-4. Lane 3: Human cell line U-251MG sp



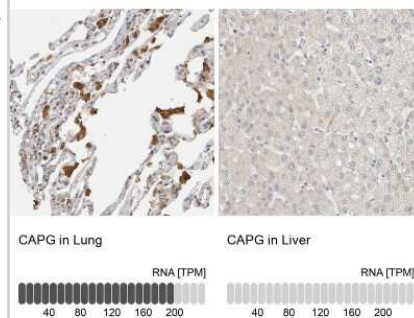
Immunohistochemistry-Paraffin: CapG Antibody [NBP1-90215] - Staining of human small intestine shows moderate to strong cytoplasmic positivity in cells in lamina propria.



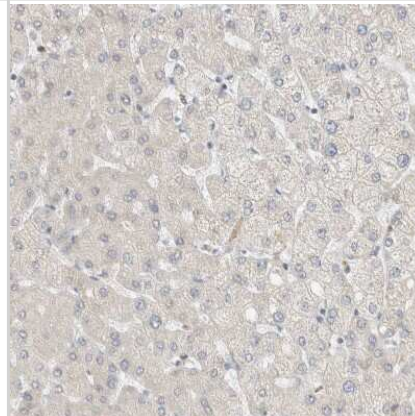
Western Blot: CapG Antibody [NBP1-90215] - Lane 1: NIH-3T3 cell lysate (Mouse embryonic fibroblast cells). Lane 2: NBT-II cell lysate (Rat Wistar bladder tumor cells).



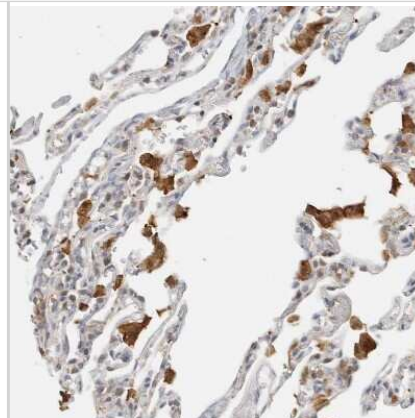
Immunohistochemistry-Paraffin: CapG Antibody [NBP1-90215] - Analysis in human lung and liver tissues. Corresponding CAPG RNA-seq data are presented for the same tissues.



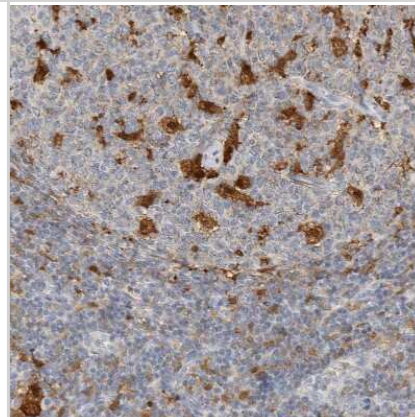
Immunohistochemistry-Paraffin: CapG Antibody [NBP1-90215] - Staining of human liver shows no positivity in hepatocytes as expected.



Immunohistochemistry-Paraffin: CapG Antibody [NBP1-90215] - Staining of human lung shows moderate to strong cytoplasmic positivity in macrophages.



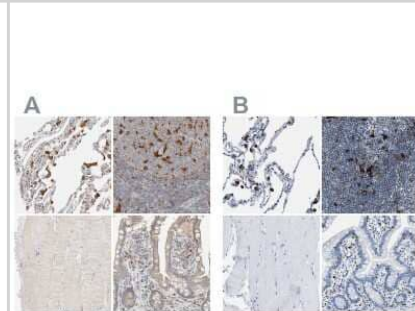
Immunohistochemistry-Paraffin: CapG Antibody [NBP1-90215] - Staining of human lymph node shows moderate to strong cytoplasmic positivity in macrophages.



Immunohistochemistry-Paraffin: CapG Antibody [NBP1-90215] - Staining of human skeletal muscle shows negative to very weak positivity in myocytes.



Immunohistochemistry-Paraffin: CapG Antibody [NBP1-90215] - Staining of human kidney, placenta, skeletal muscle and small intestine using Anti-CD2AP antibody (A) NBP1-90215 shows similar protein distribution across tissues to independent antibody NBP1-90214 (B).





### **Novus Biologicals USA**

10730 E. Briarwood Avenue  
Centennial, CO 80112  
USA  
Phone: 303.730.1950  
Toll Free: 1.888.506.6887  
Fax: 303.730.1966  
nb-customerservice@bio-techne.com

### **Bio-Techne Canada**

21 Canmotor Ave  
Toronto, ON M8Z 4E6  
Canada  
Phone: 905.827.6400  
Toll Free: 855.668.8722  
Fax: 905.827.6402  
canada.inquires@bio-techne.com

### **Bio-Techne Ltd**

19 Barton Lane  
Abingdon Science Park  
Abingdon, OX14 3NB, United Kingdom  
Phone: (44) (0) 1235 529449  
Free Phone: 0800 37 34 15  
Fax: (44) (0) 1235 533420  
info.EMEA@bio-techne.com

### **General Contact Information**

www.novusbio.com  
Technical Support: nb-technical@bio-techne.com  
Orders: nb-customerservice@bio-techne.com  
General: novus@novusbio.com

### **Products Related to NBP1-90215**

---

NBP1-90215PEP	CapG Recombinant Protein Antigen
HAF008	Goat anti-Rabbit IgG Secondary Antibody [HRP]
NB7160	Goat anti-Rabbit IgG (H+L) Secondary Antibody [HRP]
NBP2-24891	Rabbit IgG Isotype Control

---

### **Limitations**

This product is for research use only and is not approved for use in humans or in clinical diagnosis. Primary Antibodies are guaranteed for 1 year from date of receipt.

For more information on our 100% guarantee, please visit [www.novusbio.com/guarantee](http://www.novusbio.com/guarantee)

Earn gift cards/discounts by submitting a review: [www.novusbio.com/reviews/submit/NBP1-90215](http://www.novusbio.com/reviews/submit/NBP1-90215)

Earn gift cards/discounts by submitting a publication using this product:  
[www.novusbio.com/publications](http://www.novusbio.com/publications)

