

Product Datasheet

ATPase Na⁺/K⁺ beta 2 Antibody - BSA Free NBP1-90174

Unit Size: 0.1 ml

Store at 4C short term. Aliquot and store at -20C long term. Avoid freeze-thaw cycles.

www.novusbio.com



technical@novusbio.com

Protocols, Publications, Related Products, Reviews, Research Tools and Images at:
www.novusbio.com/NBP1-90174

Updated 2/21/2025 v.20.1

Earn rewards for product
reviews and publications.

Submit a publication at www.novusbio.com/publications

Submit a review at www.novusbio.com/reviews/destination/NBP1-90174



NBP1-90174ATPase Na⁺/K⁺ beta 2 Antibody - BSA Free**Product Information**

Unit Size	0.1 ml
Concentration	Concentrations vary lot to lot. See vial label for concentration. If unlisted please contact technical services.
Storage	Store at 4C short term. Aliquot and store at -20C long term. Avoid freeze-thaw cycles.
Clonality	Polyclonal
Preservative	0.02% Sodium Azide
Isotype	IgG
Purity	Immunogen affinity purified
Buffer	PBS (pH 7.2) and 40% Glycerol

Product Description

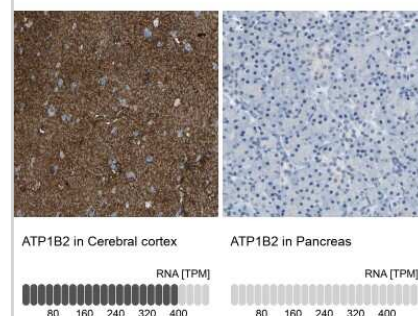
Host	Rabbit
Gene ID	482
Gene Symbol	ATP1B2
Species	Human
Immunogen	This antibody was developed against Recombinant Protein corresponding to amino acids: TVSDHTPKYQDRLATPGLMIRPKTENLDVIVNVSDTESWDQHVQKLNKFLEPY NDSIQAQKNDVCRPGRYEYQPDNGVLNYPKRACQFNRTQLGNCSGIGDST

Product Application Details

Applications	Immunohistochemistry, Immunohistochemistry-Paraffin
Recommended Dilutions	Immunohistochemistry 1:50 - 1:200, Immunohistochemistry-Paraffin 1:500 - 1:1000
Application Notes	For IHC-Paraffin, HIER pH 6 retrieval is recommended.

Images

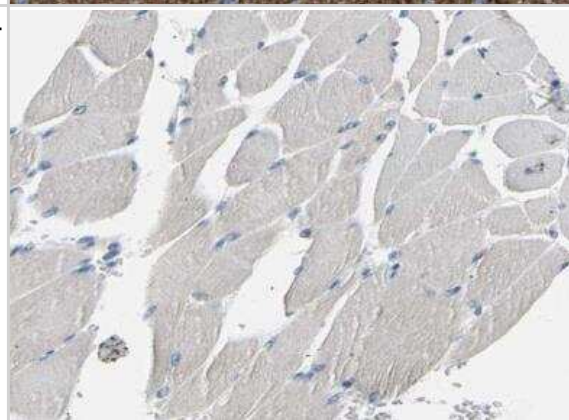
Immunohistochemistry-Paraffin: ATPase Na⁺/K⁺ beta 2 Antibody [NBP1-90174] - Analysis in human cerebral cortex and pancreas tissues using NBP1-90174 antibody. Corresponding ATPase Na⁺/K⁺ beta 2 RNA-seq data are presented for the same tissues.



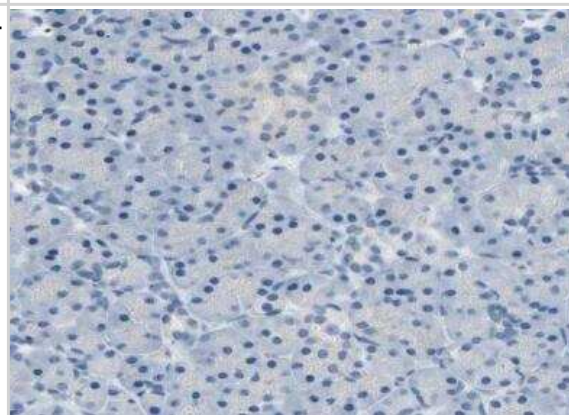
Immunohistochemistry-Paraffin: ATPase Na⁺/K⁺ beta 2 Antibody [NBP1-90174] - Staining of human cerebral cortex shows strong positivity in neuropil.



Immunohistochemistry-Paraffin: ATPase Na⁺/K⁺ beta 2 Antibody [NBP1-90174] - Staining of human skeletal muscle shows not expression in myocytes as expected.



Immunohistochemistry-Paraffin: ATPase Na⁺/K⁺ beta 2 Antibody [NBP1-90174] - Staining of human pancreas shows no positivity in exocrine glandular cells as expected.



Immunohistochemistry-Paraffin: ATPase Na⁺/K⁺ beta 2 Antibody [NBP1-90174] - Staining of small intestine shows no positivity in glandular cells as expected.





Novus Biologicals USA

10730 E. Briarwood Avenue
Centennial, CO 80112
USA
Phone: 303.730.1950
Toll Free: 1.888.506.6887
Fax: 303.730.1966
nb-customerservice@bio-techne.com

Bio-Techne Canada

21 Canmotor Ave
Toronto, ON M8Z 4E6
Canada
Phone: 905.827.6400
Toll Free: 855.668.8722
Fax: 905.827.6402
canada.inquires@bio-techne.com

Bio-Techne Ltd

19 Barton Lane
Abingdon Science Park
Abingdon, OX14 3NB, United Kingdom
Phone: (44) (0) 1235 529449
Free Phone: 0800 37 34 15
Fax: (44) (0) 1235 533420
info.EMEA@bio-techne.com

General Contact Information

www.novusbio.com
Technical Support: nb-technical@bio-techne.com
Orders: nb-customerservice@bio-techne.com
General: novus@novusbio.com

Products Related to NBP1-90174

NBP1-90174PEP	ATPase Na ⁺ /K ⁺ beta 2 Recombinant Protein Antigen
HAF008	Goat anti-Rabbit IgG Secondary Antibody [HRP]
NB7160	Goat anti-Rabbit IgG (H+L) Secondary Antibody [HRP]
NBP2-24891	Rabbit IgG Isotype Control

Limitations

This product is for research use only and is not approved for use in humans or in clinical diagnosis. Primary Antibodies are guaranteed for 1 year from date of receipt.

For more information on our 100% guarantee, please visit www.novusbio.com/guarantee

Earn gift cards/discounts by submitting a review: www.novusbio.com/reviews/submit/NBP1-90174

Earn gift cards/discounts by submitting a publication using this product:
www.novusbio.com/publications

