

# Product Datasheet

## CD20 Antibody - BSA Free NBP1-90051

Unit Size: 0.1 ml

Store at 4C short term. Aliquot and store at -20C long term. Avoid freeze-thaw cycles.

[www.novusbio.com](http://www.novusbio.com)



[technical@novusbio.com](mailto:technical@novusbio.com)

Protocols, Publications, Related Products, Reviews, Research Tools and Images at:  
[www.novusbio.com/NBP1-90051](http://www.novusbio.com/NBP1-90051)

Updated 2/21/2025 v.20.1

Earn rewards for product  
reviews and publications.

Submit a publication at [www.novusbio.com/publications](http://www.novusbio.com/publications)

Submit a review at [www.novusbio.com/reviews/destination/NBP1-90051](http://www.novusbio.com/reviews/destination/NBP1-90051)



**NBP1-90051**

CD20 Antibody - BSA Free

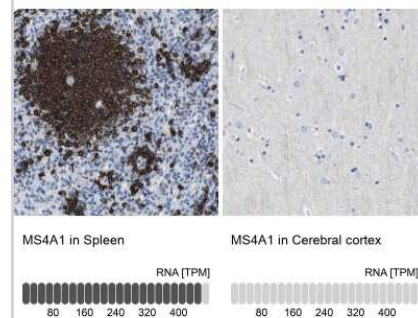
Product Information	
Unit Size	0.1 ml
Concentration	Concentrations vary lot to lot. See vial label for concentration. If unlisted please contact technical services.
Storage	Store at 4C short term. Aliquot and store at -20C long term. Avoid freeze-thaw cycles.
Clonality	Polyclonal
Preservative	0.02% Sodium Azide
Isotype	IgG
Purity	Immunogen affinity purified
Buffer	PBS (pH 7.2) and 40% Glycerol

Product Description	
Host	Rabbit
Gene ID	931
Gene Symbol	MS4A1
Species	Human, Mouse, Equine
Reactivity Notes	Mouse and equine reactivity reported from a verified customer review.
Immunogen	This antibody was developed against Recombinant Protein corresponding to amino acids: ENEWKRTC SRPKSNIVLLSAEEKKEQTIEIKEEVVGLTETSSQPKNEEDIEIPIQ EEEEETETNFPEPPQDQESSP

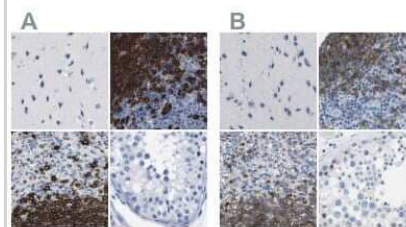
Product Application Details	
Applications	Western Blot, Immunocytochemistry/ Immunofluorescence, Immunohistochemistry, Immunohistochemistry-Paraffin
Recommended Dilutions	Western Blot 0.04 - 0.4 ug/ml, Immunohistochemistry 1:1000 - 1:2500, Immunocytochemistry/ Immunofluorescence 0.25-2 ug/ml, Immunohistochemistry-Paraffin 1:1000 - 1:2500
Application Notes	For IHC-Paraffin, HIER pH 6 retrieval is recommended. ICC/IF Fixation/Permeabilization: PFA/Triton X-100

**Images**

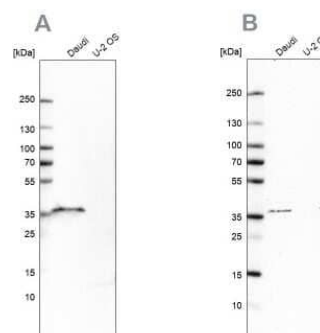
Immunohistochemistry-Paraffin: CD20 Antibody [NBP1-90051] - Analysis in human spleen and cerebral cortex tissues. Corresponding MS4A1 RNA-seq data are presented for the same tissues.



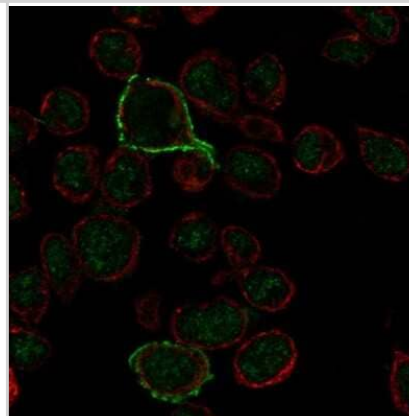
Immunohistochemistry-Paraffin: CD20 Antibody [NBP1-90051] - Staining of human cerebral cortex, lymph node, spleen and testis using Anti-MS4A1 antibody NBP1-90051 (A) shows similar protein distribution across tissues to independent antibody NBP1-90052 (B).



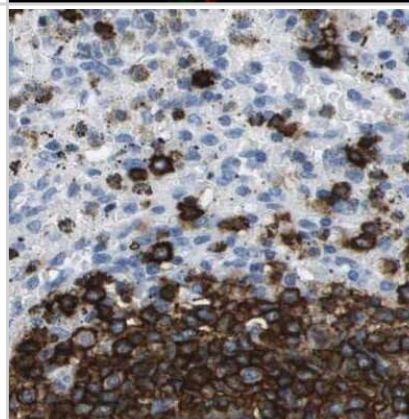
Western Blot: CD20 Antibody [NBP1-90051] - Analysis using Anti-MS4A1 antibody NBP1-90051 (A) shows similar pattern to independent antibody NBP1-90052 (B).



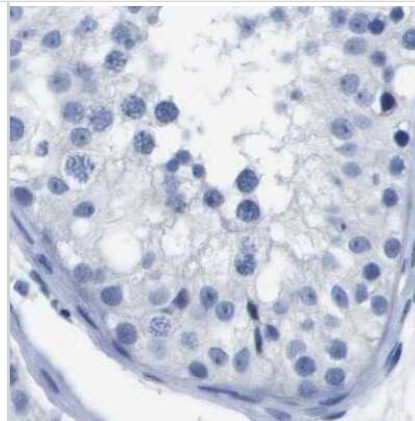
Immunocytochemistry/Immunofluorescence: CD20 Antibody [NBP1-90051] - Staining of human cell line REH shows localization to nucleus & plasma membrane. Antibody staining is shown in green.



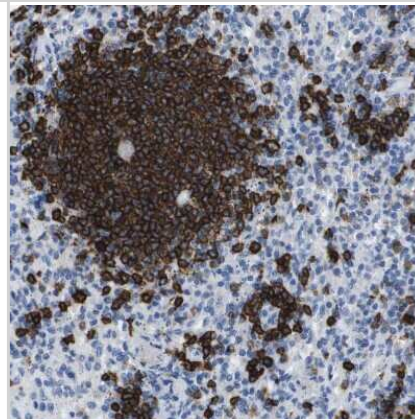
Immunohistochemistry-Paraffin: CD20 Antibody [NBP1-90051] - Staining of human spleen using Anti-MS4A1 antibody NBP1-90051.



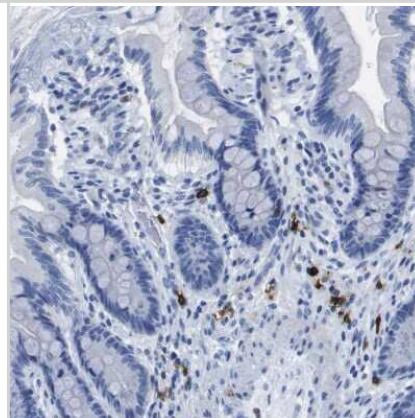
Immunohistochemistry-Paraffin: CD20 Antibody [NBP1-90051] - Staining of human testis.



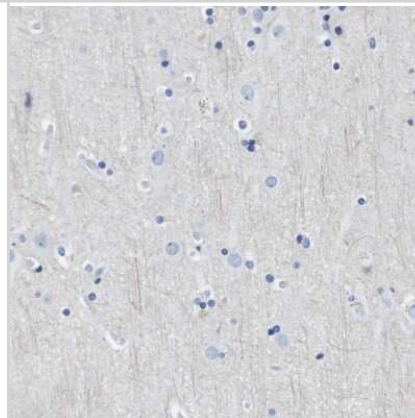
Immunohistochemistry-Paraffin: CD20 Antibody [NBP1-90051] - Staining of human spleen shows strong membranous positivity in cells in white pulp.



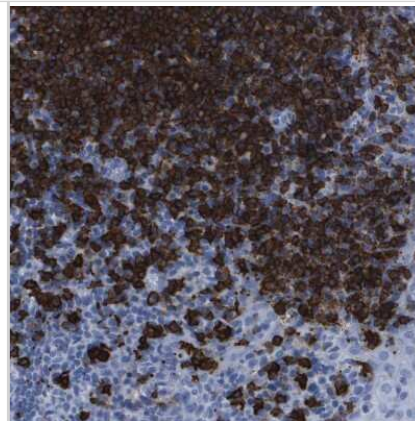
Immunohistochemistry-Paraffin: CD20 Antibody [NBP1-90051] - Staining of human gastrointestinal shows strong membranous positivity in lymphocytes.



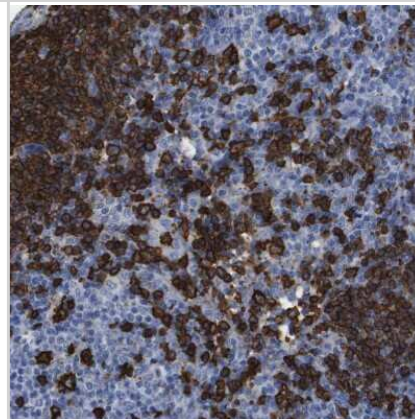
Immunohistochemistry-Paraffin: CD20 Antibody [NBP1-90051] - Staining of human cerebral cortex shows low expression as expected.



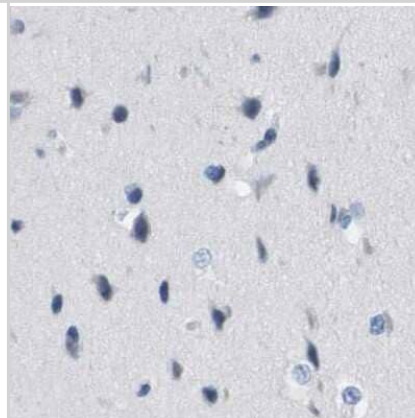
Immunohistochemistry-Paraffin: CD20 Antibody [NBP1-90051] - Staining of human tonsil shows strong membranous positivity in germinal center cells.



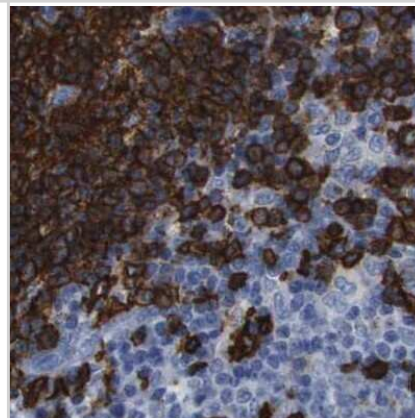
Immunohistochemistry-Paraffin: CD20 Antibody [NBP1-90051] - Staining of human lymph node shows strong membranous positivity in germinal center cells.



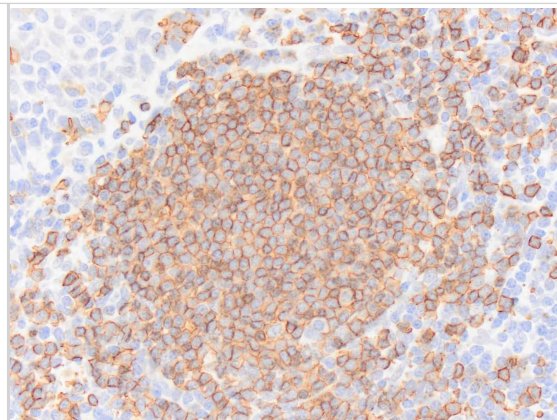
Immunohistochemistry-Paraffin: CD20 Antibody [NBP1-90051] - Staining of human cerebral cortex using Anti-MS4A1 antibody NBP1-90051.



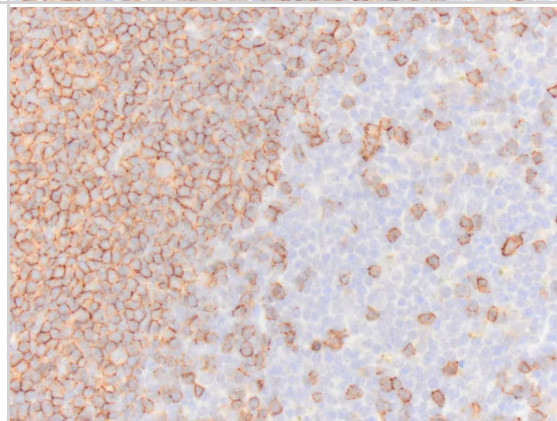
Immunohistochemistry-Paraffin: CD20 Antibody [NBP1-90051] - Staining of human lymph node using Anti-MS4A1 antibody NBP1-90051.



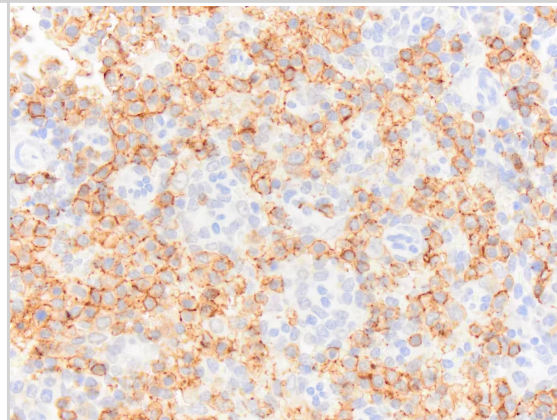
Immunohistochemistry-Paraffin: Rabbit Polyclonal CD20 Antibody [NBP1-90051] - CD20 immunoreactivity in an FFPE section of human tonsil. NBP1-90051 was diluted to 250ng per mL and was left on tissue sections for 30m at room temperature. Secondary was horse anti rabbit HRP polymer. Image from a verified customer review.



Immunohistochemistry-Paraffin: Rabbit Polyclonal CD20 Antibody [NBP1-90051] - CD20 immunoreactivity in an FFPE section of mouse spleen. NBP1-90051 was diluted to 250ng per mL and was left on tissue sections for 30m at room temperature. Secondary was equine anti rabbit HRP polymer. Image from a verified customer review.



Immunohistochemistry-Paraffin: Rabbit Polyclonal CD20 Antibody [NBP1-90051] - CD20 immunoreactivity in an FFPE section of horse spleen. NBP1-90051 was diluted to 250ng per mL and was left on tissue sections for 30m at room temperature. Secondary was equine anti rabbit HRP polymer. Image from a verified customer review.





### **Novus Biologicals USA**

10730 E. Briarwood Avenue  
Centennial, CO 80112  
USA  
Phone: 303.730.1950  
Toll Free: 1.888.506.6887  
Fax: 303.730.1966  
nb-customerservice@bio-techne.com

### **Bio-Techne Canada**

21 Canmotor Ave  
Toronto, ON M8Z 4E6  
Canada  
Phone: 905.827.6400  
Toll Free: 855.668.8722  
Fax: 905.827.6402  
canada.inquires@bio-techne.com

### **Bio-Techne Ltd**

19 Barton Lane  
Abingdon Science Park  
Abingdon, OX14 3NB, United Kingdom  
Phone: (44) (0) 1235 529449  
Free Phone: 0800 37 34 15  
Fax: (44) (0) 1235 533420  
info.EMEA@bio-techne.com

### **General Contact Information**

www.novusbio.com  
Technical Support: nb-technical@bio-  
techne.com  
Orders: nb-customerservice@bio-techne.com  
General: novus@novusbio.com

Error: Subreport could not be shown.

---

### **Limitations**

This product is for research use only and is not approved for use in humans or in clinical diagnosis. Primary Antibodies are guaranteed for 1 year from date of receipt.

For more information on our 100% guarantee, please visit [www.novusbio.com/guarantee](http://www.novusbio.com/guarantee)

Earn gift cards/discounts by submitting a review: [www.novusbio.com/reviews/submit/NBP1-90051](http://www.novusbio.com/reviews/submit/NBP1-90051)

Earn gift cards/discounts by submitting a publication using this product:  
[www.novusbio.com/publications](http://www.novusbio.com/publications)

