

Product Datasheet

COBL Antibody - BSA Free NBP1-89615

Unit Size: 0.1 ml

Store at 4C short term. Aliquot and store at -20C long term. Avoid freeze-thaw cycles.

www.novusbio.com



technical@novusbio.com

Publications: 1

Protocols, Publications, Related Products, Reviews, Research Tools and Images at:
www.novusbio.com/NBP1-89615

Updated 12/2/2025 v.20.1

Earn rewards for product
reviews and publications.

Submit a publication at www.novusbio.com/publications

Submit a review at www.novusbio.com/reviews/destination/NBP1-89615



NBP1-89615

COBL Antibody - BSA Free

Product Information	
Unit Size	0.1 ml
Concentration	Concentrations vary lot to lot. See vial label for concentration. If unlisted please contact technical services.
Storage	Store at 4C short term. Aliquot and store at -20C long term. Avoid freeze-thaw cycles.
Clonality	Polyclonal
Preservative	0.02% Sodium Azide
Isotype	IgG
Purity	Affinity purified
Buffer	PBS (pH 7.2) and 40% Glycerol

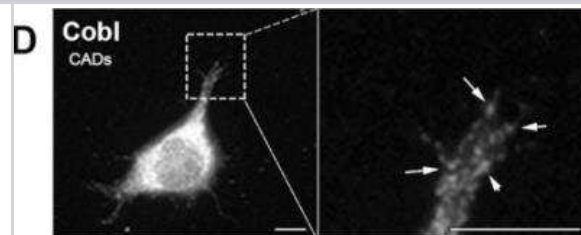
Product Description	
Description	Novus Biologicals Rabbit COBL Antibody - BSA Free (NBP1-89615) is a polyclonal antibody validated for use in IHC, WB and ICC/IF. Anti-COBL Antibody: Cited in 1 publication. All Novus Biologicals antibodies are covered by our 100% guarantee.
Host	Rabbit
Gene ID	23242
Gene Symbol	COBL
Species	Human, Mouse
Reactivity Notes	Mouse reactivity reported in scientific literature (PMID: 30866487).
Immunogen	This antibody was developed against Recombinant Protein corresponding to amino acids: AVVRVSPEVPLQNILPVICAKCEVSPEHVLLRDNIAGEEELSLSLNLGKELY AWDNRRETRFRKSSLGNDETDKKKKFLGFFKVNKRNSNSKGCLT

Product Application Details	
Applications	Western Blot, Immunohistochemistry-Paraffin, Immunocytochemistry/ Immunofluorescence, Immunohistochemistry, Knockdown Validated
Recommended Dilutions	Western Blot 0.04-0.4 ug/ml, Immunohistochemistry 1:50 - 1:200, Immunocytochemistry/ Immunofluorescence 0.25-2 ug/ml, Immunohistochemistry-Paraffin 1:50 - 1:200, Knockdown Validated
Application Notes	For IHC-Paraffin, HIER pH 6 retrieval is recommended. ICC/IF Fixation Permeabilization: Use PFA/Triton X-100.

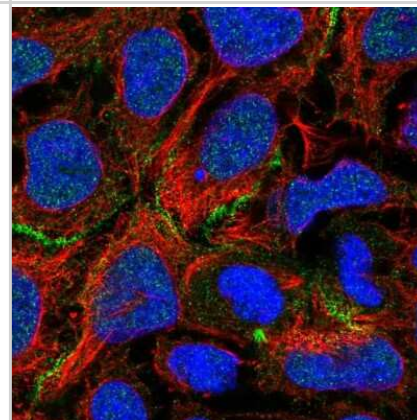


Images

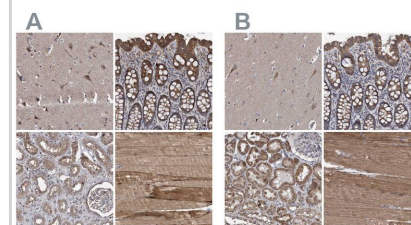
COBL-Antibody-Immunocytochemistry-Immunofluorescence-NBP1-89615-img0026.jpg



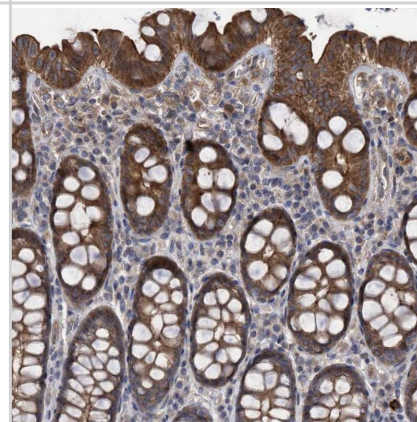
Immunocytochemistry/Immunofluorescence: COBL Antibody [NBP1-89615] - Staining of human cell line CACO-2 shows localization to nucleoplasm & cell junctions. Antibody staining is shown in green.



Staining of human cerebral cortex, gastrointestinal, kidney and skeletal muscle using Anti-COBL antibody NBP1-89615 (A) shows similar protein distribution across tissues to independent antibody NBP1-89616 (B).



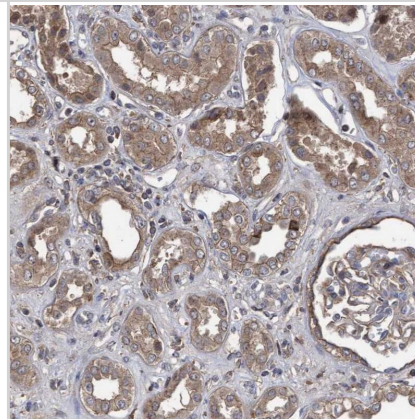
Staining of human colon shows strong cytoplasmic positivity in glandular cells.



Staining of human skeletal muscle shows strong cytoplasmic positivity in myocytes.



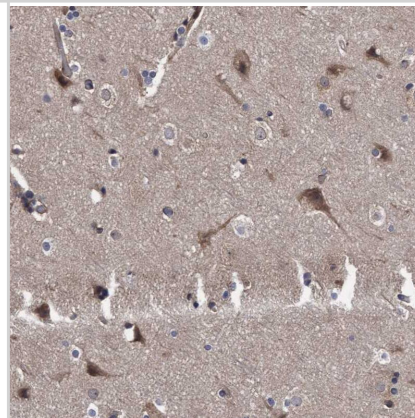
Staining of human kidney shows moderate cytoplasmic positivity in cells in tubules.



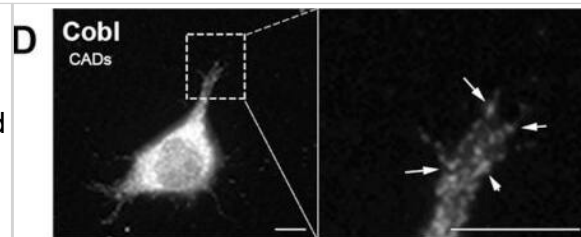
Analysis in HeLa cells transfected with control siRNA, target specific siRNA probe #1 and #2, using Anti-COBL antibody. Remaining relative intensity is presented. Loading control: Anti-GAPDH.



Staining of human cerebral cortex shows strong cytoplasmic positivity in neurons.



Validation of the LCM/MS data from cellular protrusions using microscopy. Immunofluorescence (IF) of proteins identified by LCM/MS (A–D) “expected” or (E–H) “not expected” to be within protrusions based on their known functions/localizations. (A) Cd47 and (B) Anxa2 are found in both hCAD/dCAD protrusions. (C) Tenm2 is found within hCAD protrusions and (D) Cobl in GCs. Interestingly, (E) Grk5 was observed in hCAD protrusions; (F) Hist1h3b protein in hCAD protrusions and GCs (G) Hspa1b in dCAD protrusions and TNTs and (H) Arg1 in dCAD protrusions, GCs, and TNTs. White arrows/arrowheads show punctates within dCAD/hCAD protrusions and GCs or within TNTs, respectively. Scale bars = 10 μ m. IF of all 8 proteins corroborate the LCM/MS protein identification for each subtypes of protrusions. (I) 1198 unique proteins were identified by LCM/MS to be in protrusions and 169 were found to be exclusive to protrusions. 904 of the 1198 proteins found in protrusions and 87 out of 169 exclusive proteins had images in the HPA Subcell database. IF images for the proteins identified by LCM/MS in protrusions, present in the HPA Subcell database, were observed and catalogued as being observed or not in protrusions (Figure S2). On average 4.7% of proteins are found in protrusions in the HPA database, 13.6% are found in our LCM isolated protrusions and 23% were found in the “exclusive” LCM protrusions. The fold enrichment increases by 2.9% or 4.8% when we looked at proteins identified by LCM/MS in protrusions or exclusive to protrusions, respectively. Image collected and cropped by CiteAb from the following open publication (<https://pubmed.ncbi.nlm.nih.gov/30866487>), licensed under a CC-BY license. Not internally tested by Novus Biologicals.



Publications

Gousset K, Gordon A, Kumar Kannan S, Tovar J. A novel Microproteomic Approach Using Laser Capture Microdissection to Study Cellular Protrusions *Int J Mol Sci* 2019-03-07 [PMID: 30866487] (ICC/IF, Mouse)



Novus Biologicals USA

10730 E. Briarwood Avenue
Centennial, CO 80112
USA
Phone: 303.730.1950
Toll Free: 1.888.506.6887
Fax: 303.730.1966
nb-customerservice@bio-techne.com

Bio-Techne Canada

21 Canmotor Ave
Toronto, ON M8Z 4E6
Canada
Phone: 905.827.6400
Toll Free: 855.668.8722
Fax: 905.827.6402
canada.inquires@bio-techne.com

Bio-Techne Ltd

19 Barton Lane
Abingdon Science Park
Abingdon, OX14 3NB, United Kingdom
Phone: (44) (0) 1235 529449
Free Phone: 0800 37 34 15
Fax: (44) (0) 1235 533420
info.EMEA@bio-techne.com

General Contact Information

www.novusbio.com
Technical Support: nb-technical@bio-techne.com
Orders: nb-customerservice@bio-techne.com
General: novus@novusbio.com

Products Related to NBP1-89615

NBP1-89615PEP	COBL Recombinant Protein Antigen
NBP2-33376H	Blue Marker Antibody (6F4-F6) [HRP]
HAF008	Goat anti-Rabbit IgG Secondary Antibody [HRP]
NB7160	Goat anti-Rabbit IgG (H+L) Secondary Antibody [HRP]
NBP2-24891	Rabbit IgG Isotype Control

Limitations

This product is for research use only and is not approved for use in humans or in clinical diagnosis. Primary Antibodies are guaranteed for 1 year from date of receipt.

For more information on our 100% guarantee, please visit www.novusbio.com/guarantee

Earn gift cards/discounts by submitting a review: www.novusbio.com/reviews/submit/NBP1-89615

Earn gift cards/discounts by submitting a publication using this product:
www.novusbio.com/publications

