

Product Datasheet

SUCLG1 Antibody - BSA Free

NBP1-89489

Unit Size: 0.1 ml

Store at 4C short term. Aliquot and store at -20C long term. Avoid freeze-thaw cycles.

www.novusbio.com



technical@novusbio.com

Publications: 1

Protocols, Publications, Related Products, Reviews, Research Tools and Images at:
www.novusbio.com/NBP1-89489

Updated 9/9/2025 v.20.1

Earn rewards for product
reviews and publications.

Submit a publication at www.novusbio.com/publications

Submit a review at www.novusbio.com/reviews/destination/NBP1-89489



NBP1-89489

SUCLG1 Antibody - BSA Free

Product Information

| | |
|----------------------|--|
| Unit Size | 0.1 ml |
| Concentration | Concentrations vary lot to lot. See vial label for concentration. If unlisted please contact technical services. |
| Storage | Store at 4C short term. Aliquot and store at -20C long term. Avoid freeze-thaw cycles. |
| Clonality | Polyclonal |
| Preservative | 0.02% Sodium Azide |
| Isotype | IgG |
| Purity | Immunogen affinity purified |
| Buffer | PBS (pH 7.2) and 40% Glycerol |

Product Description

| | |
|--------------------|--|
| Description | Novus Biologicals Rabbit SUCLG1 Antibody - BSA Free (NBP1-89489) is a polyclonal antibody validated for use in IHC, WB and ICC/IF. Anti-SUCLG1 Antibody: Cited in 1 publication. All Novus Biologicals antibodies are covered by our 100% guarantee. |
| Host | Rabbit |
| Gene ID | 8802 |
| Gene Symbol | SUCLG1 |
| Species | Human, Mouse, Rat |
| Immunogen | This antibody was developed against Recombinant Protein corresponding to amino acids: LPQNGIRHCSYTASRQHLYVDKNTKIICQGFTGKQGTFFHSQQALEYGTKLVGG TTPGKGGQTHLGLPVFNTVKEAKEQTGA |

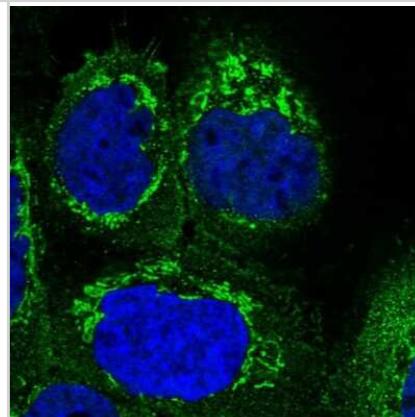
Product Application Details

| | |
|------------------------------|--|
| Applications | Western Blot, Immunohistochemistry-Paraffin, Immunocytochemistry/Immunofluorescence, Immunohistochemistry |
| Recommended Dilutions | Western Blot 0.04-0.4 ug/ml, Immunohistochemistry 1:1000 - 1:2500, Immunocytochemistry/ Immunofluorescence 0.25-2 ug/ml, Immunohistochemistry-Paraffin 1:1000 - 1:2500 |
| Application Notes | For IHC-Paraffin, HIER pH 6 retrieval is recommended. Immunocytochemistry/Immunofluorescence Fixation Permeabilization: Use PFA/Triton X-100. |

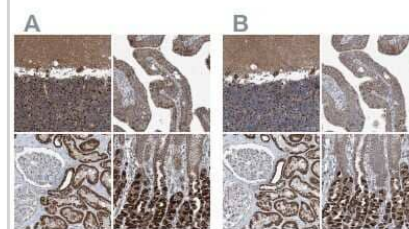


Images

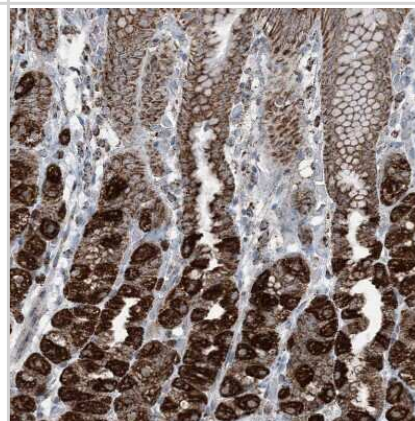
Immunocytochemistry/Immunofluorescence: SUCLG1 Antibody [NBP1-89489] - Immunofluorescent staining of human cell line A-431 shows localization to plasma membrane & mitochondria. Antibody staining is shown in green.



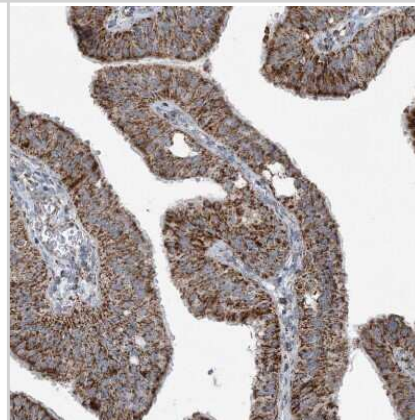
Immunohistochemistry-Paraffin: SUCLG1 Antibody [NBP1-89489] - Staining of human cerebellum, fallopian tube, kidney and stomach using Anti-SUCLG1 antibody NBP1-89489 (A) shows similar protein distribution across tissues to independent antibody NBP2-38318 (B).



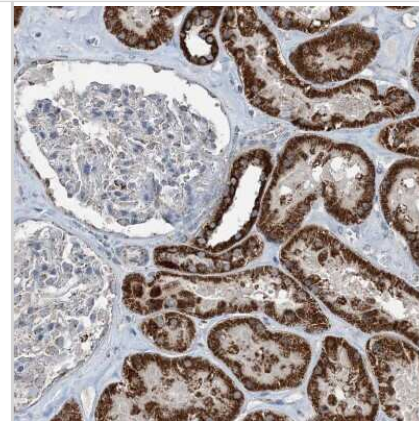
Immunohistochemistry-Paraffin: SUCLG1 Antibody [NBP1-89489] - Staining of human stomach shows strong granular cytoplasmic positivity in glandular cells.



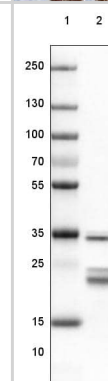
Immunohistochemistry-Paraffin: SUCLG1 Antibody [NBP1-89489] - Staining of human Fallopian tube shows strong granular cytoplasmic positivity in glandular cells.



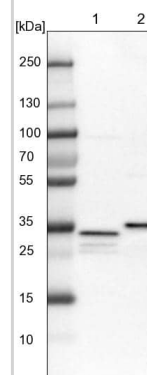
Immunohistochemistry-Paraffin: SUCLG1 Antibody [NBP1-89489] - Staining of human kidney shows strong granular cytoplasmic positivity in cells in tubules.



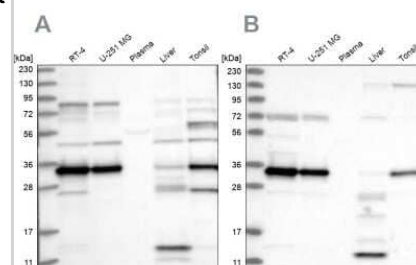
Lane 1: Marker [kDa] 250, 130, 100, 70, 55, 35, 25, 15, 10
Lane 2: Mouse Cerebral Cortex tissue



Lane 1: NIH-3T3 cell lysate (Mouse embryonic fibroblast cells)
Lane 2: NBT-II cell lysate (Rat Wistar bladder tumour cells)



Western Blot: SUCLG1 Antibody [NBP1-89489] - Analysis using Anti-SUCLG1 antibody NBP1-89489 (A) shows similar pattern to independent antibody NBP2-38318 (B).



Publications

Oyama Y, Bartman CM, Bonney S et al. Intense Light-Mediated Circadian Cardioprotection via Transcriptional Reprogramming of the Endothelium Cell Rep 2019-08-08 [PMID: 31390562] (WB, Human)



Novus Biologicals USA

10730 E. Briarwood Avenue
Centennial, CO 80112
USA
Phone: 303.730.1950
Toll Free: 1.888.506.6887
Fax: 303.730.1966
nb-customerservice@bio-techne.com

Bio-Techne Canada

21 Canmotor Ave
Toronto, ON M8Z 4E6
Canada
Phone: 905.827.6400
Toll Free: 855.668.8722
Fax: 905.827.6402
canada.inquires@bio-techne.com

Bio-Techne Ltd

19 Barton Lane
Abingdon Science Park
Abingdon, OX14 3NB, United Kingdom
Phone: (44) (0) 1235 529449
Free Phone: 0800 37 34 15
Fax: (44) (0) 1235 533420
info.EMEA@bio-techne.com

General Contact Information

www.novusbio.com
Technical Support: nb-technical@bio-techne.com
Orders: nb-customerservice@bio-techne.com
General: novus@novusbio.com

Products Related to NBP1-89489

| | |
|---------------|---|
| NBP1-89489PEP | SUCLG1 Recombinant Protein Antigen |
| HAF008 | Goat anti-Rabbit IgG Secondary Antibody [HRP] |
| NB7160 | Goat anti-Rabbit IgG (H+L) Secondary Antibody [HRP] |
| NBP2-24891 | Rabbit IgG Isotype Control |

Limitations

This product is for research use only and is not approved for use in humans or in clinical diagnosis. Primary Antibodies are guaranteed for 1 year from date of receipt.

For more information on our 100% guarantee, please visit www.novusbio.com/guarantee

Earn gift cards/discounts by submitting a review: www.novusbio.com/reviews/submit/NBP1-89489

Earn gift cards/discounts by submitting a publication using this product:
www.novusbio.com/publications

