

# Product Datasheet

## ARL3 Antibody - BSA Free NBP1-88839

Unit Size: 0.1 ml

Store at 4C short term. Aliquot and store at -20C long term. Avoid freeze-thaw cycles.

[www.novusbio.com](http://www.novusbio.com)



[technical@novusbio.com](mailto:technical@novusbio.com)

### Publications: 1

Protocols, Publications, Related Products, Reviews, Research Tools and Images at:  
[www.novusbio.com/NBP1-88839](http://www.novusbio.com/NBP1-88839)

Updated 12/2/2025 v.20.1

Earn rewards for product  
reviews and publications.

Submit a publication at [www.novusbio.com/publications](http://www.novusbio.com/publications)

Submit a review at [www.novusbio.com/reviews/destination/NBP1-88839](http://www.novusbio.com/reviews/destination/NBP1-88839)



**NBP1-88839**

ARL3 Antibody - BSA Free

Product Information	
Unit Size	0.1 ml
Concentration	Concentrations vary lot to lot. See vial label for concentration. If unlisted please contact technical services.
Storage	Store at 4C short term. Aliquot and store at -20C long term. Avoid freeze-thaw cycles.
Clonality	Polyclonal
Preservative	0.02% Sodium Azide
Isotype	IgG
Purity	Affinity purified
Buffer	PBS (pH 7.2) and 40% Glycerol
Target Molecular Weight	20 kDa

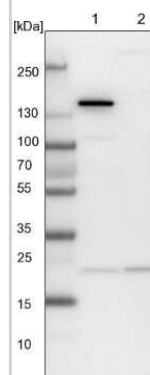
Product Description	
Description	Novus Biologicals Rabbit ARL3 Antibody - BSA Free (NBP1-88839) is a polyclonal antibody validated for use in IHC and WB. Anti-ARL3 Antibody: Cited in 1 publication. All Novus Biologicals antibodies are covered by our 100% guarantee.
Host	Rabbit
Gene ID	403
Gene Symbol	ARL3
Species	Human, Rat
Immunogen	This antibody was developed against Recombinant Protein corresponding to amino acids: KLNVWDIGGQRKIRPYWKNYFENTDILYVIDSADRKRFEETGQELAEELLEEEKL SCVPVLI

Product Application Details	
Applications	Western Blot, Immunohistochemistry-Paraffin, Immunohistochemistry
Recommended Dilutions	Western Blot 0.04-0.4 ug/ml, Immunohistochemistry 1:1000 - 1:2500, Immunohistochemistry-Paraffin 1:1000 - 1:2500
Application Notes	For IHC-Paraffin, HIER pH 6 retrieval is recommended.

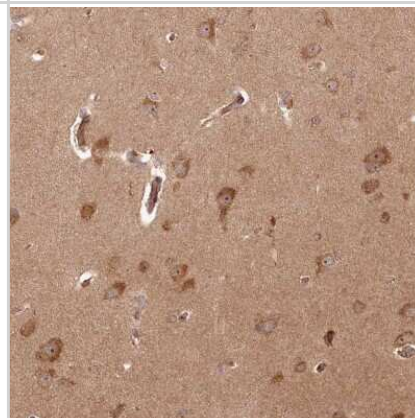


## Images

Western Blot: ARL3 Antibody [NBP1-88839] - Lane 1: NIH-3T3 cell lysate (Mouse embryonic fibroblast cells). Lane 2: NBT-II cell lysate (Rat Wistar bladder tumor cells).

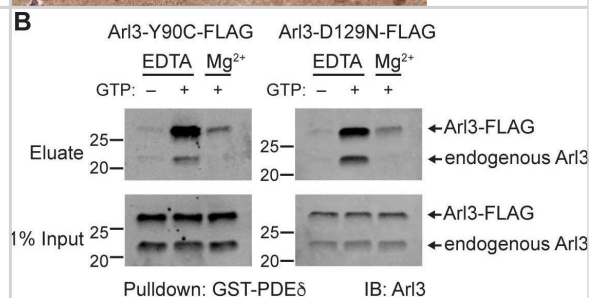


Immunohistochemistry-Paraffin: ARL3 Antibody [NBP1-88839] - Staining of human cerebral cortex shows strong cytoplasmic and nucleolar positivity in neuronal cells.



Arl3-Y90C is a fast cycling GTPase. (A) 1% input (I) and eluates (E) from GST-PDE $\delta$  pulldowns using AD-293 lysates expressing 3XFLAG-tagged Arl3 mutants immunoblotted with anti-FLAG antibodies. (B) Arl3-Y90C-FLAG or Arl3-D129N-FLAG lysates were incubated with 10 mM ethylenediaminetetraacetic acid (EDTA) and/or 10 mM GTP, spiked with Mg $^{2+}$ , and precipitated with GST-PDE $\delta$ . Westerns immunoblotted for Arl3 with eluates shown on top, and 1% inputs shown below. Arl3-FLAG and endogenous Arl3 bands labeled. (C) Representative retinal cross-sections from Arl3-Y90C-FLAG- or Arl3-D129N-expressing rod photoreceptors stained with anti-FLAG antibodies (green) and counterstained with Hoechst (blue). Scale bars, 5  $\mu$ m. Nuclear position of electroporated rods represented as described in Figure 1. Figure 2

—source data 1. Raw western blot images. Raw western blot images. GTP loading of wild-type Arl3-FLAG. Arl3-FLAG lysates were incubated with 10 mM EDTA and/or 10 mM GTP, spiked with Mg $^{2+}$ , and precipitated with GST-PDE $\delta$ . Westerns immunoblotted for Arl3 with eluates shown on top, and 1% inputs shown below. Arl3-FLAG and endogenous Arl3 bands labeled. Unlike Arl3-Q71L, Arl3-D67V does not form a ternary complex with RP2 and PDE $\delta$ . 1% input (I) and eluates (E) from GST-PDE $\delta$  pulldowns using AD-293 lysates expressing 3XFLAG-tagged Arl3 mutants immunoblotted with anti-RP2 antibodies. Image collected and cropped by CiteAb from the following open publication (<https://pubmed.ncbi.nlm.nih.gov/36598133>), licensed under a CC-BY license. Not internally tested by Novus Biologicals.



## Publications

Travis AM, Manocha S, Willer JR et al. Disrupting the ciliary gradient of active Arl3 affects rod photoreceptor nuclear migration eLife 2023-01-04 [PMID: 36598133] (Western Blot)



### **Novus Biologicals USA**

10730 E. Briarwood Avenue  
Centennial, CO 80112  
USA  
Phone: 303.730.1950  
Toll Free: 1.888.506.6887  
Fax: 303.730.1966  
nb-customerservice@bio-techne.com

### **Bio-Techne Canada**

21 Canmotor Ave  
Toronto, ON M8Z 4E6  
Canada  
Phone: 905.827.6400  
Toll Free: 855.668.8722  
Fax: 905.827.6402  
canada.inquires@bio-techne.com

### **Bio-Techne Ltd**

19 Barton Lane  
Abingdon Science Park  
Abingdon, OX14 3NB, United Kingdom  
Phone: (44) (0) 1235 529449  
Free Phone: 0800 37 34 15  
Fax: (44) (0) 1235 533420  
info.EMEA@bio-techne.com

### **General Contact Information**

www.novusbio.com  
Technical Support: nb-technical@bio-techne.com  
Orders: nb-customerservice@bio-techne.com  
General: novus@novusbio.com

### **Products Related to NBP1-88839**

---

NBP1-88839PEP	ARL3 Recombinant Protein Antigen
NBP2-33376H	Blue Marker Antibody (6F4-F6) [HRP]
HAF008	Goat anti-Rabbit IgG Secondary Antibody [HRP]
NB7160	Goat anti-Rabbit IgG (H+L) Secondary Antibody [HRP]
NBP2-24891	Rabbit IgG Isotype Control

---

### **Limitations**

This product is for research use only and is not approved for use in humans or in clinical diagnosis. Primary Antibodies are guaranteed for 1 year from date of receipt.

For more information on our 100% guarantee, please visit [www.novusbio.com/guarantee](http://www.novusbio.com/guarantee)

Earn gift cards/discounts by submitting a review: [www.novusbio.com/reviews/submit/NBP1-88839](http://www.novusbio.com/reviews/submit/NBP1-88839)

Earn gift cards/discounts by submitting a publication using this product:  
[www.novusbio.com/publications](http://www.novusbio.com/publications)

