

Product Datasheet

SPFH2 Antibody - BSA Free

NBP1-88247

Unit Size: 0.1 ml

Store at 4C short term. Aliquot and store at -20C long term. Avoid freeze-thaw cycles.

www.novusbio.com



technical@novusbio.com

Publications: 3

Protocols, Publications, Related Products, Reviews, Research Tools and Images at:
www.novusbio.com/NBP1-88247

Updated 2/21/2025 v.20.1

Earn rewards for product reviews and publications.

Submit a publication at www.novusbio.com/publications

Submit a review at www.novusbio.com/reviews/destination/NBP1-88247



NBP1-88247

SPFH2 Antibody - BSA Free

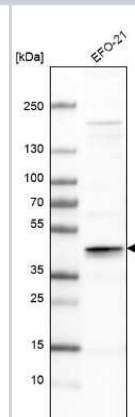
Product Information	
Unit Size	0.1 ml
Concentration	Concentrations vary lot to lot. See vial label for concentration. If unlisted please contact technical services.
Storage	Store at 4C short term. Aliquot and store at -20C long term. Avoid freeze-thaw cycles.
Clonality	Polyclonal
Preservative	0.02% Sodium Azide
Isotype	IgG
Purity	Immunogen affinity purified
Buffer	PBS (pH 7.2) and 40% Glycerol

Product Description	
Host	Rabbit
Gene ID	11160
Gene Symbol	ERLIN2
Species	Human, Mouse, Rat
Immunogen	This antibody was developed against Recombinant Protein corresponding to amino acids: KTKLLIAAQKQKVVEKEAETERKKALIEAEKVAQVAEITYGQKVM EKETEKKISEI EDAAFLAREKAKADAECYTAMKIAEANKLKLTP EYLQLMKYKAIASNSKIYFGKD IPNMFMD SAGSVSKQF EGLADKLSFGLEDEPLETATK

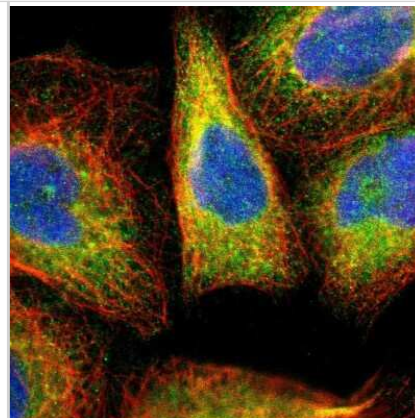
Product Application Details	
Applications	Western Blot, Immunocytochemistry/ Immunofluorescence, Immunohistochemistry, Immunohistochemistry-Paraffin
Recommended Dilutions	Western Blot 0.04 - 0.4 ug/ml, Immunohistochemistry 1:1000 - 1:2500, Immunocytochemistry/ Immunofluorescence 0.25-2 ug/ml, Immunohistochemistry-Paraffin 1:1000 - 1:2500
Application Notes	For IHC-Paraffin, HIER pH 6 retrieval is recommended. ICC/IF, Fixation Permeabilization: Use PFA/Triton X-100.

Images

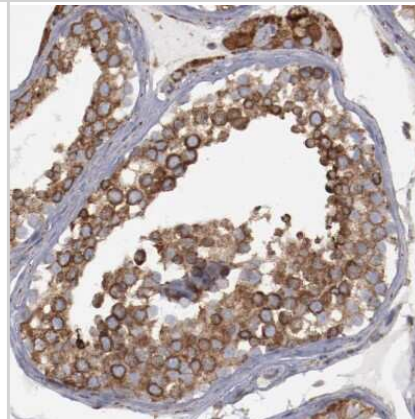
Western Blot: SPFH2 Antibody [NBP1-88247] - Analysis in human cell line EFO-21.



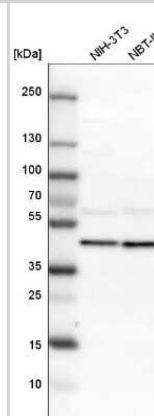
Immunocytochemistry/Immunofluorescence: SPFH2 Antibody [NBP1-88247] - Immunofluorescent staining of human cell line A-431 shows localization to endoplasmic reticulum. Antibody staining is shown in green.



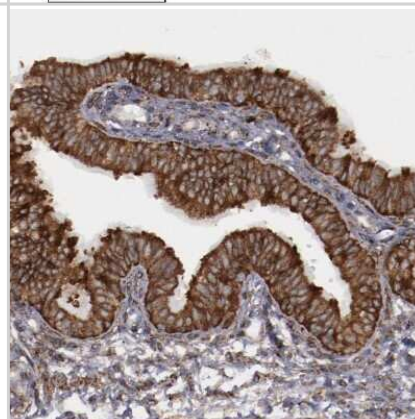
Immunohistochemistry-Paraffin: SPFH2 Antibody [NBP1-88247] - Staining of human testis shows moderate granular cytoplasmic positivity in cells in seminiferous ducts.



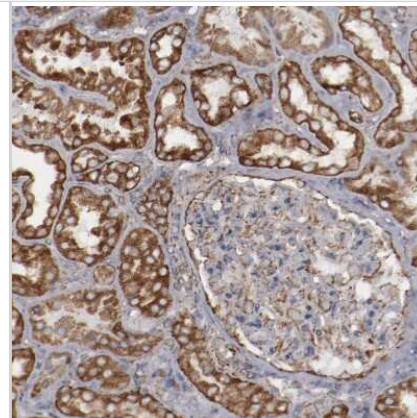
Western Blot: SPFH2 Antibody [NBP1-88247] - Analysis in mouse cell line NIH-3T3 and rat cell line NBT-II.



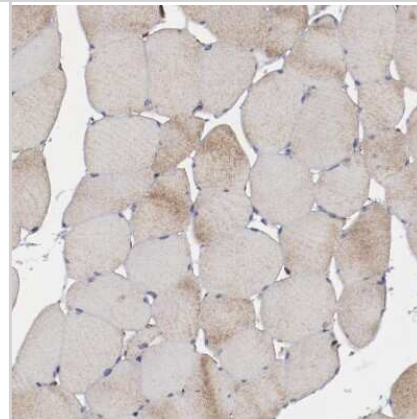
Immunohistochemistry-Paraffin: SPFH2 Antibody [NBP1-88247] - Staining of human Fallopian tube shows strong granular cytoplasmic positivity in glandular cells.



Immunohistochemistry-Paraffin: SPFH2 Antibody [NBP1-88247] - Staining of human kidney shows strong granular cytoplasmic positivity in cells in tubules.



Immunohistochemistry-Paraffin: SPFH2 Antibody [NBP1-88247] - Staining of human skeletal muscle shows very weak positivity in myocytes as expected.



Publications

Stadler C, Rexhepaj E, Singan VR et al. Immunofluorescence and fluorescent-protein tagging show high correlation for protein localization in mammalian cells. *Nat Methods* 2013-04-01 [PMID: 23435261]

HollDG, Burleigh A, Git A et al. ZNF703 is a common Luminal B breast cancer oncogene that differentially regulates luminal and basal progenitors in human mammary epithelium. *EMBO Mol Med* 2011-03-01 [PMID: 21337521]

Mulder J, Bjorling E, Jonasson K et al. Tissue Profiling of the Mammalian Central Nervous System Using Human Antibody-based Proteomics. *Mol Cell Proteomics* 2009-07-01 [PMID: 19351664]



Novus Biologicals USA

10730 E. Briarwood Avenue
Centennial, CO 80112
USA
Phone: 303.730.1950
Toll Free: 1.888.506.6887
Fax: 303.730.1966
nb-customerservice@bio-techne.com

Bio-Techne Canada

21 Canmotor Ave
Toronto, ON M8Z 4E6
Canada
Phone: 905.827.6400
Toll Free: 855.668.8722
Fax: 905.827.6402
canada.inquires@bio-techne.com

Bio-Techne Ltd

19 Barton Lane
Abingdon Science Park
Abingdon, OX14 3NB, United Kingdom
Phone: (44) (0) 1235 529449
Free Phone: 0800 37 34 15
Fax: (44) (0) 1235 533420
info.EMEA@bio-techne.com

General Contact Information

www.novusbio.com
Technical Support: nb-technical@bio-techne.com
Orders: nb-customerservice@bio-techne.com
General: novus@novusbio.com

Error: Subreport could not be shown.

Limitations

This product is for research use only and is not approved for use in humans or in clinical diagnosis. Primary Antibodies are guaranteed for 1 year from date of receipt.

For more information on our 100% guarantee, please visit www.novusbio.com/guarantee

Earn gift cards/discounts by submitting a review: www.novusbio.com/reviews/submit/NBP1-88247

Earn gift cards/discounts by submitting a publication using this product:
www.novusbio.com/publications

